



California Crop Progress & Condition

Cooperating with the California Department of Food and Agriculture
Pacific Region • P.O. Box 1258 • Sacramento, CA 95812 • (916) 738-6600 • (855) 270-2722 FAX • www.nass.usda.gov/ca

WEEK ENDING: September 11, 2022
RELEASED: September 12, 2022

FREQUENCY: Weekly
VOL. 43 NO. 24

WEATHER

Average temperature lows for California ranged from 41 to 80 in the mountains, 49 to 77 along the coast, 57 to 87 in the desert, and 67 to 86 in the valley. Average temperature highs for the state ranged from 64 to 116 along the coast, 73 to 103 in the mountains, 81 to 114 in the desert, and 86 to 116 in the valley.

FIELD CROPS

Across the state, unseasonably warm temperatures damaged **alfalfa** and other hay crops. **Corn** for silage, alfalfa hay, and alfalfa silage was harvested. In Sutter County, **rice** continued to be harvested. In the San Joaquin Valley, the extreme heat resulted in **cotton** maturing quickly. Bolls were cracking open and producers were preparing equipment for harvest. In Stanislaus County, **dry bean** harvest began. Corn fields that had already been harvested were fertilized and disced in preparation for fall planted grains. Corn fields were sprayed for two spotted spider mite and army worm. In Tulare County, **Sudan** was being cut, dried, and baled. In Southern California, significant rains from a tropical storm have damaged some hay and delayed cutting.

FRUIT CROPS

Peach, prune, nectarine, and **plum** harvests were ongoing. With the extreme heat, some trees had leaf burn. Wine **grape** and table grape harvests continued. Some raisin grapes were ready for harvest and some raisin grapes were drying on trays in vineyards. **Persimmons, kiwifruits,** and **lemons** continued to develop. **Pear** and **quince** harvest progressed. Some **pomegranates** were harvested in Tulare County. Valencia **oranges** were picked. Reflective tarps were placed in select orchards to assist with fruit color. Various citrus groves were hedge rowed. **Olive** grove harvest preparation continued.

NUT CROPS

Spraying for weeds and irrigation continued where necessary. **Almond** and **pistachio** harvest continued steadily. **Walnuts** were maturing.

VEGETABLE CROPS

Across the Central Valley, tomatoes were harvested. Severe heat caused damage to unharvested process tomatoes. In the Sacramento Valley, harvest of winter **squash** began. In Stanislaus County, sweet **potato** harvest began and **broccoli** planting continued. In Southern California, **lettuce** had leaf burn and other heat damage due to the extreme temperatures. In Tulare County, **onions, summer squash,** and **eggplant** were harvested.

LIVESTOCK

Rangeland and non-irrigated pasture were in poor condition. Irrigated range remained in good condition. Cattle supplemental feeding continued to compensate for poor quality range. Range water troughs were filled to mitigate stress of the extended extreme summer heat. Cattle were moved to better forage and some herds were reduced. The excessive heat and poor nocturnal temperature recovery stressed dairy cows and negatively impacted milk production.

NOTICE: USDA NASS has changed the base temperature used to calculate growing degree days (found in the table below) from 60 °F to 50 °F.

CALIFORNIA CROP WEATHER – WEEK ENDING SEPTEMBER 11, 2022											
STATIONS	TEMPERATURE				GROWING DEGREE DAYS AT 50 °F BASE ¹		RAIN DAYS ²	PRECIPITATION ³			
	Average for Week Ending Sep 11, 2022	Departure from Normal ⁵	High	Low	This Year	Normal Year ⁵	This Season	This Week	This Season	Normal Season ⁵	Normal Year ⁵
					Jan 1 - Sep 11, 2022	Jan 1 - Sep 11, 2022	Oct 1 - Sep 11, 2022	Week Ending Sep 11, 2022	Oct 1 - Sep 11, 2022	Oct 1 - Sep 11	Oct 1 - Sept 30
	-- Degrees Fahrenheit --				-- Number --		-- Days --	-- Inches of Precipitation --			
North Coast											
Eureka WFO	59	1	71	49	1,147	989	124	0.02	26.46	39.87	40.61
Ukiah	83	12	116	60	3,473	3,095	66	0.00	19.58	34.70	35.07
Santa Rosa	79	12	114	53	2,885	2,510	60	0.00	26.19	33.67	34.00
Napa State Hospital	79	12	112	58	2,653	2,396	49	0.00	18.01	20.17	20.36
Central Coast											
San Francisco	75	10	97	59	2,652	2,397	45	0.00	18.19	19.58	19.77
San Jose	83	13	109	65	3,466	3,050	33	0.00	7.31	13.42	13.58
Salinas	NA	NA	NA	NA	NA	2,253	NA	NA	NA	12.54	12.66
Monterey	70	7	90	58	2,425	2,018	41	0.00	10.70	16.18	16.36
Paso Robles	84	12	112	64	3,847	3,117	25	0.07	8.79	12.10	12.24
Sacramento Valley											
Redding	90	13	115	68	4,890	4,220	60	0.00	18.86	33.18	33.70
Red Bluff	91	14	113	70	4,824	4,135	47	0.00	12.66	22.96	23.25
Orland	NA	NA	NA	NA	NA	3,857	NA	NA	NA	21.19	21.52
Oroville	89	13	111	70	4,803	4,075	50	0.00	17.37	25.53	25.84
Marysville	88	14	114	67	4,353	3,802	42	0.00	8.49	19.98	20.21
Sacramento	90	17	116	70	4,302	3,561	43	0.00	14.03	17.89	18.10
San Joaquin Valley											
Stockton	88	13	114	67	4,339	3,960	36	0.00	9.81	13.38	13.53
Modesto	88	13	111	71	4,335	4,029	34	0.00	9.01	12.22	12.34
Merced Macready	88	13	115	68	4,512	3,892	28	0.00	7.45	11.76	11.87
Madera	89	12	115	68	4,390	4,109	23	0.00	2.66	10.76	10.86
Fresno	92	13	114	76	5,344	4,582	25	0.00	6.35	10.95	11.05
Lemoore	90	14	116	69	4,766	4,106	20	0.00	4.03	7.15	7.23
Visalia	86	10	110	67	4,759	4,094	29	0.00	7.45	10.26	10.37
Bakersfield	93	13	115	75	5,392	4,856	21	0.00	5.42	6.32	6.40
Cascade Sierra											
Alturas	71	10	101	41	1,842	1,627	67	0.00	7.57	11.43	11.72
Mount Shasta	73	9	103	52	2,331	1,828	83	0.00	20.26	37.22	37.86
Blue Canyon	80	13	95	65	2,477	1,960	67	0.00	65.37	61.95	62.80
Yosemite Valley	NA	NA	NA	NA	NA	2,457	NA	NA	NA	39.88	40.65
South Coast											
Santa Maria	75	10	88	61	2,408	2,354	26	0.06	7.87	13.27	13.42
Santa Barbara	76	10	94	64	2,958	2,586	27	0.09	10.63	17.19	17.38
Oxnard	76	9	93	66	3,008	2,963	27	0.17	11.82	12.87	13.05
Riverside	86	8	108	71	5,219	4,500	26	0.14	5.02	9.32	9.48
Los Angeles	81	10	101	71	4,027	3,578	29	0.13	10.32	12.15	12.33
San Diego	80	8	91	71	3,769	3,905	30	0.65	6.75	9.70	9.87
Southeast Interior											
Bishop	80	9	107	57	3,684	3,266	19	0.72	6.37	4.75	4.87
Daggett	90	6	111	73	6,075	5,494	14	0.00	1.78	3.67	3.80
Lancaster	86	9	110	69	4,791	4,079	20	0.24	4.54	6.72	6.86
Thermal	88	1	113	74	6,879	6,531	8	0.81	1.01	2.77	2.98
Blythe	92	1	113	78	7,379	7,057	12	0.00	2.65	3.38	3.58
Imperial	90	0	114	74	7,083	6,791	2	0.00	0.06	2.27	2.39

¹ Previously labeled as growing degree hours. The column title was corrected in the Sept 27, 2021 report. Additionally, degree days were previously calculated using a base of 60 degrees. The base temperature was changed to 50 degrees in the April 4, 2022 report.

² Total number of days with precipitation events this season.

³ Rain or melted snow/ice.

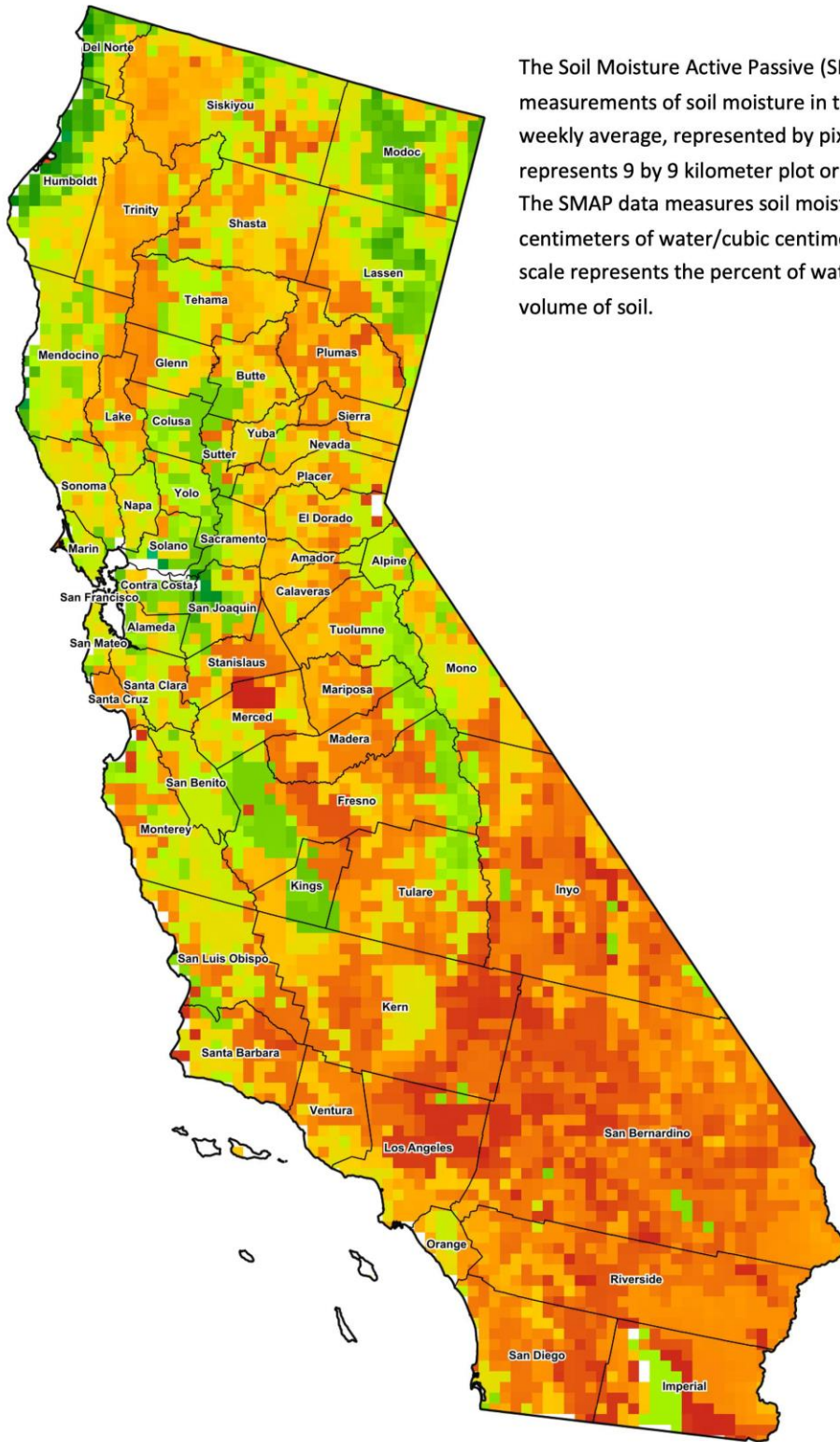
⁴ Normal periods 1990-2020 used in departure from normal calculations.

Data retrieved from NOAA and NWS. Calculated by USDA NASS.
All rights reserved.

Reservoir Data from the California Department of Water Resources

Reservoir	Capacity	September 11, 2022			This Date Last Year	
		Storage	Percent of Capacity	Percent of Average	Storage	Percent of Capacity
	<i>Acre Feet</i>	<i>Acre Feet</i>	<i>Percent</i>	<i>Percent</i>	<i>Acre Feet</i>	<i>Percent</i>
Shasta Lake	4,547,300	1,553,124	34	58	1,159,485	25
Lake Oroville	3,537,400	1,277,209	36	64	792,231	22
Trinity Lake	2,443,800	582,749	24	37	802,003	33
New Melones Reservoir	2,413,000	627,718	26	46	877,688	37
San Luis Reservoir	2,057,200	542,518	27	67	251,304	12
Don Pedro Reservoir	4,547,300	1,090,062	54	76	1,044,553	51

Source: cdec.water.ca.gov/reportapp/javareports?name=DLYHYDRO



The Soil Moisture Active Passive (SMAP) provides measurements of soil moisture in the root zone as a weekly average, represented by pixels. Each pixel represents 9 by 9 kilometer plot or about 20,000 acres. The SMAP data measures soil moisture in cubic centimeters of water/cubic centimeters of soil. The scale represents the percent of water in a given volume of soil.

Percent Soil Moisture



Drought Conditions from the U.S. Drought Monitor

Time	Percent of Land in Drought Rating						Drought Severity (DSCI)
	None	D0	D1	D2	D3	D4	
Current	0.00	0.24	2.24	57.35	23.61	16.57	354
Last Week	0.00	0.24	2.24	57.35	23.61	16.57	354
3 Months Ago	0.00	0.21	2.31	37.67	48.22	11.59	369
One Year Ago	0.00	0.00	6.07	5.99	42.28	45.66	428

The U.S. Drought Monitor is jointly produced by the National Drought Mitigation Center at the University of Nebraska-Lincoln, the United States Department of Agriculture, and the National Oceanic and Atmospheric Administration. droughtmonitor.unl.edu/CurrentMap/StateDroughtMonitor.aspx?CA