



# California Crop Progress & Condition

Cooperating with the California Department of Food and Agriculture  
Pacific Region • 650 Capitol Mall, Suite 6-100 • Sacramento, CA 95814 • (916) 738-6600 • (855) 270-2722 FAX •  
[www.nass.usda.gov/ca](http://www.nass.usda.gov/ca)

**WEEK ENDING: August 6, 2023**  
**RELEASED: August 7, 2023**

**FREQUENCY: Weekly**  
**VOL. 44 NO. 19**

## WEATHER

Average low temperatures for California ranged from 31 to 65 in the mountains, 49 to 73 along the coast, 53 to 88 in the desert, and 56 to 82 in the Central Valley. Average high temperatures for the state ranged from 47 to 91 in the mountains, 63 to 103 along the coast, 85 to 104 in the Central Valley, and 95 to 113 in the desert. From the California Department of Water Resources as of July 31, snowpack water content was 0.00 inches in the Northern Sierra, Central Sierra, and Southern Sierra.

## FIELD CROPS

High temperatures increased the need for irrigation. In the Sacramento Valley, **rice** harvest was delayed due to late planting. **Alfalfa** was cut and baled. In Stanislaus County, silage **corn** was progressing well, and harvest began. Alfalfa was harvested for silage and dried for hay. Silage corn, **sorghum**, and **sudan grass** were sprayed for weeds. In the San Joaquin Valley, **cotton** bolls were setting and bloom continued. In Tulare County, cotton and corn silage fields were cultivated and treated for weeds. Harvested grain fields were fertilized, tilled, and planted with summer silage crops such as corn and sorghum. Cotton continued to develop. Corn fields grew rapidly. Alfalfa was cut, raked, and baled.

## FRUIT CROPS

Table **grapes** were harvested. Vineyards continued to be thinned to allow for additional sunlight exposure. Raisin grape varieties steadily developed. Cherry orchards and wine grape vineyards were sprayed for weeds. **Nectarine**, **peach**, and **plum** harvests continued. Late stone fruit varieties continued to develop. Some growers placed reflective tarps on orchard floors to improve color in developing fruit. **Kiwifruit** vineyards were tied and irrigated. **Apples**, **pears**, **pomegranates**, and **persimmons** continued to develop. Some apples and pears were harvested. **Olive** trees were trimmed. **Blueberries** were harvested. Some blueberry fields with older plants were replaced. Valencia **oranges**, **lemons**, **grapefruit**, and **mandarins** were picked and packed. Some orange trees were topped and skirted.

## NUT CROPS

Scattered showers across the state helped orchard soil stay moist amidst high temperatures and dry winds. **Almond** hull split was widespread across the state. Growers continued orchard floor cleanup to prepare for harvest. **Walnuts**, **pistachios**, and **pecans** continued to mature. Some walnut growers sprayed for codling moth and watched for mites.

## VEGETABLE CROPS

**Tomato** harvest continued in the Sacramento Valley. **Sweet corn**, **watermelon**, and **snap bean** harvest began. In Stanislaus County, **pumpkins** began to bloom. **Sweet potatoes** and tomatoes continued to develop. **Cantaloupe**, **honeydew**, watermelon, and **garlic** harvests continued. In the San Joaquin Valley, **bell pepper** harvest continued. In Tulare County, sweet corn, **onions**, **squash**, **cucumbers**, **peppers**, and tomatoes were harvested. Tomato plants were irrigated and treated for pests. Processing tomatoes began to ripen and harvest was underway. **Carrot** harvest continued in Kern County. **Broccoli**, **celery**, and **cauliflower** harvests continued and **brussel sprout** harvest began along the Central Coast. **Lettuce** harvest continued with some reports of quality issues. Brussel sprouts, lettuce, celery, and carrots were planted for late-season harvest.

## LIVESTOCK

Dry summer days continued to deteriorate non-irrigated pasture quality. Foothill rangeland and non-irrigated pasture were reported to be in good to fair condition. Irrigated pasture remained in good to excellent condition. Cattle grazed primarily on low and mid-elevation range. Bees were active in squash, melon, and sunflower fields. Sheep grazed on fallow fields and retired farmland.

**CALIFORNIA CROP WEATHER – WEEK ENDING AUGUST 6, 2023**

| STATIONS                  | TEMPERATURE                         |                                    |      |     | GROWING DEGREE DAYS <sup>1</sup> AT 50 °F BASE <sup>2</sup> |                          | RAIN DAYS <sup>3</sup> | PRECIPITATION <sup>4</sup>    |                     |                            |                          |
|---------------------------|-------------------------------------|------------------------------------|------|-----|---|--------------------------|------------------------|-------------------------------|---------------------|----------------------------|--------------------------|
|                           | Average for Week Ending Aug 6, 2023 | Departure from Normal <sup>5</sup> | High | Low | This Year   | Normal Year <sup>5</sup> | This Season            | This Week                     | This Season         | Normal Season <sup>5</sup> | Normal Year <sup>5</sup> |
|                           |                                     |                                    |      |     | Jan 1 - Aug 6, 2023   | Jan 1 - Aug 6, 2023      | Oct 1 - Aug 6, 2023    | Week Ending Aug 6, 2023       | Oct 1 - Aug 6, 2023 | Oct 1 - Aug 6              | Oct 1 - Sept 30          |
|                           | -- Degrees Fahrenheit --            |                                    |      |     | -- Number --  |                          | -- Days --             | -- Inches of Precipitation -- |                     |                            |                          |
| <b>North Coast</b>        |                                     |                                    |      |     |   |                          |                        |                               |                     |                            |                          |
| Eureka WFO                | 61                                  | 2                                  | 67   | 54  | 707   | 673                      | 120                    | 0.00                          | 39.59               | 39.56                      | 40.61                    |
| Ukiah                     | 76                                  | 0                                  | 98   | 54  | 2,327   | 2,246                    | 83                     | 0.00                          | 38.73               | 34.62                      | 35.07                    |
| Santa Rosa                | 70                                  | 2                                  | 100  | 49  | 1,790   | 1,846                    | 77                     | 0.00                          | 42.45               | 33.60                      | 34.00                    |
| Napa State Hospital       | 68                                  | 1                                  | 90   | 53  | 1,727   | 1,759                    | 71                     | 0.00                          | 29.54               | 20.14                      | 20.36                    |
| <b>Central Coast</b>      |                                     |                                    |      |     |   |                          |                        |                               |                     |                            |                          |
| San Francisco             | 64                                  | 0                                  | 75   | 57  | 1,694   | 1,833                    | 73                     | 0.00                          | 31.40               | 19.53                      | 19.77                    |
| San Jose                  | 70                                  | 0                                  | 92   | 57  | 2,073   | 2,312                    | 66                     | 0.00                          | 15.32               | 13.37                      | 13.58                    |
| Salinas                   | NA                                  | NA                                 | NA   | NA  | NA  | 1,724                    | NA                     | NA                            | NA                  | 12.51                      | 12.66                    |
| Monterey                  | 61                                  | -1                                 | 69   | 53  | 1,079   | 1,550                    | 65                     | 0.01                          | 23.81               | 16.15                      | 16.36                    |
| Paso Robles               | 74                                  | 0                                  | 103  | 50  | 2,215   | 2,274                    | 64                     | 0.00                          | 20.92               | 12.08                      | 12.24                    |
| <b>Sacramento Valley</b>  |                                     |                                    |      |     |   |                          |                        |                               |                     |                            |                          |
| Redding                   | 84                                  | 1                                  | 103  | 62  | 3,225   | 3,137                    | 77                     | 0.00                          | 39.29               | 32.96                      | 33.70                    |
| Red Bluff                 | 83                                  | 2                                  | 104  | 63  | 3,126   | 3,079                    | 73                     | 0.00                          | 27.06               | 22.89                      | 23.25                    |
| Orland                    | NA                                  | NA                                 | NA   | NA  | NA  | 2,890                    | NA                     | NA                            | NA                  | 21.08                      | 21.52                    |
| Oroville                  | 80                                  | 0                                  | 102  | 61  | 3,080   | 3,059                    | 71                     | 0.00                          | 26.72               | 25.48                      | 25.84                    |
| Marysville                | 78                                  | 0                                  | 104  | 57  | 2,782   | 2,847                    | 58                     | 0.00                          | 22.76               | 19.92                      | 20.21                    |
| Sacramento                | 78                                  | 2                                  | 103  | 58  | 2,801   | 2,655                    | 63                     | 0.00                          | 24.66               | 17.81                      | 18.10                    |
| <b>San Joaquin Valley</b> |                                     |                                    |      |     |   |                          |                        |                               |                     |                            |                          |
| Stockton                  | 77                                  | -1                                 | 103  | 56  | 2,696   | 2,982                    | 60                     | 0.00                          | 23.23               | 13.36                      | 13.53                    |
| Modesto                   | 78                                  | -1                                 | 99   | 58  | 2,660   | 3,040                    | 65                     | 0.00                          | 20.18               | 12.20                      | 12.34                    |
| Merced Macready           | 78                                  | -1                                 | 98   | 57  | 2,815   | 2,903                    | 54                     | 0.00                          | 19.40               | 11.75                      | 11.87                    |
| Madera                    | 78                                  | -2                                 | 102  | 57  | 2,904   | 3,073                    | 51                     | 0.00                          | 11.11               | 10.76                      | 10.86                    |
| Fresno                    | 82                                  | -2                                 | 104  | 63  | 3,405   | 3,444                    | 47                     | 0.00                          | 16.35               | 10.94                      | 11.05                    |
| Lemoore                   | 80                                  | 0                                  | 103  | 56  | 3,059   | 3,084                    | 38                     | 0.00                          | 7.84                | 7.15                       | 7.23                     |
| Visalia                   | 80                                  | 0                                  | 101  | 59  | 3,177   | 3,069                    | 54                     | 0.00                          | 15.60               | 10.25                      | 10.37                    |
| Bakersfield               | 84                                  | -1                                 | 104  | 65  | 3,484   | 3,673                    | 51                     | 0.00                          | 9.37                | 6.31                       | 6.40                     |
| <b>Cascade Sierra</b>     |                                     |                                    |      |     |   |                          |                        |                               |                     |                            |                          |
| Alturas                   | 66                                  | -2                                 | 90   | 42  | 1,253   | 1,107                    | 96                     | 0.57                          | 16.22               | 11.11                      | 11.72                    |
| Mount Shasta              | 70                                  | 1                                  | 91   | 46  | 1,654   | 1,236                    | 101                    | 0.00                          | 45.05               | 36.97                      | 37.86                    |
| Blue Canyon               | 69                                  | -2                                 | 81   | 58  | 1,435   | 1,264                    | 99                     | 0.00                          | 90.41               | 61.68                      | 62.80                    |
| Yosemite Valley           | NA                                  | NA                                 | NA   | NA  | NA  | 1,658                    | NA                     | NA                            | NA                  | 39.74                      | 40.65                    |
| <b>South Coast</b>        |                                     |                                    |      |     |   |                          |                        |                               |                     |                            |                          |
| Santa Maria               | 60                                  | -4                                 | 72   | 51  | 1,331   | 1,814                    | 56                     | 0.00                          | 23.83               | 13.24                      | 13.42                    |
| Santa Barbara             | 69                                  | 3                                  | 85   | 57  | 1,961   | 1,989                    | 51                     | 0.00                          | 28.66               | 17.17                      | 17.38                    |
| Oxnard                    | 68                                  | 1                                  | 80   | 57  | 1,816   | 2,340                    | 53                     | 0.00                          | 22.14               | 12.84                      | 13.05                    |
| Riverside                 | 81                                  | 1                                  | 102  | 61  | 2,935   | 3,429                    | 52                     | 0.03                          | 13.38               | 9.26                       | 9.48                     |
| Los Angeles               | 71                                  | 1                                  | 84   | 63  | 2,300   | 2,813                    | 56                     | 0.00                          | 23.85               | 12.12                      | 12.33                    |
| San Diego                 | 72                                  | 0                                  | 81   | 65  | 2,546   | 3,077                    | 57                     | 0.00                          | 13.88               | 9.66                       | 9.87                     |
| <b>Southeast Interior</b> |                                     |                                    |      |     |   |                          |                        |                               |                     |                            |                          |
| Bishop                    | 78                                  | 0                                  | 102  | 53  | 2,273   | 2,372                    | 39                     | 0.00                          | 14.53               | 4.68                       | 4.87                     |
| Daggett                   | 89                                  | -1                                 | 107  | 69  | 3,935   | 4,143                    | 21                     | 0.04                          | 2.75                | 3.45                       | 3.80                     |
| Lancaster                 | 84                                  | 1                                  | 103  | 63  | 2,936   | 2,988                    | 30                     | 0.00                          | 7.04                | 6.68                       | 6.86                     |
| Thermal                   | 92                                  | 0                                  | 112  | 69  | 4,848   | 5,093                    | 15                     | 0.00                          | 1.35                | 2.54                       | 2.98                     |
| Blythe                    | 96                                  | 0                                  | 113  | 76  | 5,212   | 5,472                    | 17                     | 0.00                          | 1.95                | 2.90                       | 3.58                     |
| Imperial                  | NA                                  | NA                                 | NA   | NA  | NA  | 5,243                    | NA                     | NA                            | NA                  | 2.07                       | 2.39                     |

<sup>1</sup> Previously labeled as growing degree hours. The column title was corrected in the Sept 27, 2021 report.  
<sup>2</sup> Previously calculated with 60 degree base. This calculation was changed for the 2022 and later seasons.  
<sup>3</sup> Total number of days with precipitation events this season.  
<sup>4</sup> Rain or melted snow/ice.  
<sup>5</sup> Normal periods 1990-2020 used in departure from normal calculations.

Data retrieved from NOAA and NWS. Calculated by USDA NASS.  
 All rights reserved.

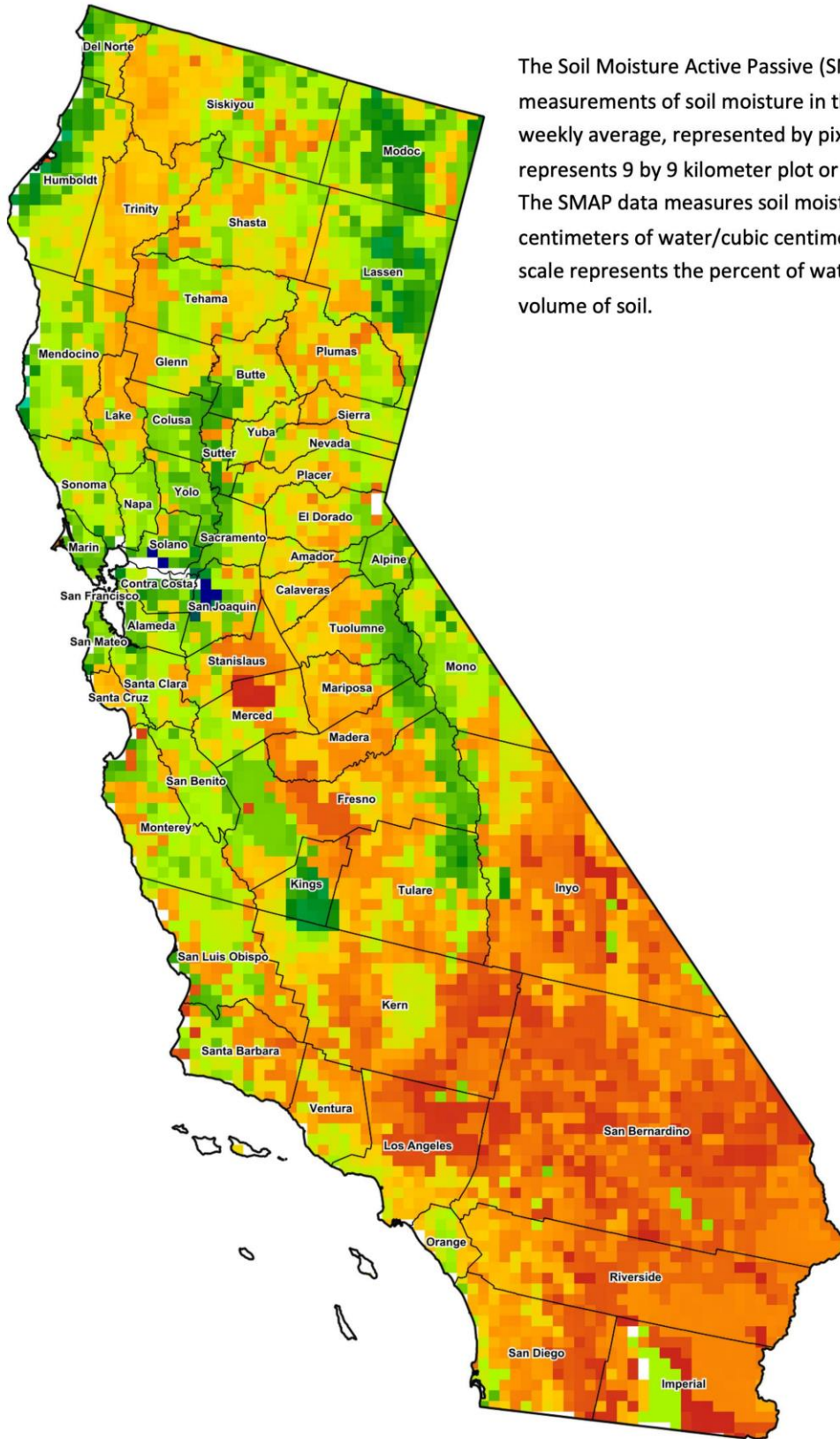
**Reservoir Data from the California Department of Water Resources**

| Reservoir             | Capacity  | August 6, 2023   |                     |                    | This Date Last Year |                     |
|-----------------------|-----------|------------------|---------------------|--------------------|---------------------|---------------------|
|                       |           | Storage          | Percent of Capacity | Percent of Average | Storage             | Percent of Capacity |
|                       |           | <i>Acre Feet</i> | <i>Percent</i>      | <i>Percent</i>     | <i>Acre Feet</i>    | <i>Percent</i>      |
| Shasta Lake           | 4,547,300 | 3,814,295        | 84                  | 126                | 1,665,284           | 37                  |
| Lake Oroville         | 3,537,400 | 3,139,838        | 89                  | 137                | 1,431,143           | 40                  |
| Trinity Lake          | 2,443,800 | 1,393,680        | 57                  | 81                 | 653,832             | 27                  |
| New Melones Reservoir | 2,413,000 | 2,010,099        | 84                  | 140                | 696,889             | 29                  |
| San Luis Reservoir    | 2,057,200 | 1,817,942        | 89                  | 212                | 625,755             | 31                  |
| Don Pedro Reservoir   | 4,547,300 | 1,934,495        | 95                  | 123                | 1,187,846           | 59                  |

Source: [cdec.water.ca.gov/reportapp/javareports?name=DLYHYDRO](https://cdec.water.ca.gov/reportapp/javareports?name=DLYHYDRO)



## California Soil Moisture Map for the Week of July 24 - 30, 2023



The Soil Moisture Active Passive (SMAP) provides measurements of soil moisture in the root zone as a weekly average, represented by pixels. Each pixel represents 9 by 9 kilometer plot or about 20,000 acres. The SMAP data measures soil moisture in cubic centimeters of water/cubic centimeters of soil. The scale represents the percent of water in a given volume of soil.



### Drought Conditions from the U.S. Drought Monitor as of 08/01/2023

| Time         | Percent of Land in Drought Rating |       |      |       |       |       | Drought Severity (DSCI) |
|--------------|-----------------------------------|-------|------|-------|-------|-------|-------------------------|
|              | None                              | D0    | D1   | D2    | D3    | D4    |                         |
| Current      | 74.43                             | 19.05 | 6.52 | 0.00  | 0.00  | 0.00  | 32                      |
| Last Week    | 74.43                             | 19.28 | 6.29 | 0.00  | 0.00  | 0.00  | 32                      |
| 3 Months Ago | 68.04                             | 23.98 | 7.98 | 0.00  | 0.00  | 0.00  | 40                      |
| One Year Ago | 0.00                              | 0.22  | 2.31 | 37.66 | 47.70 | 12.12 | 369                     |

The U.S. Drought Monitor is jointly produced by the National Drought Mitigation Center at the University of Nebraska-Lincoln, the United States Department of Agriculture, and the National Oceanic and Atmospheric Administration. [droughtmonitor.unl.edu/CurrentMap/StateDroughtMonitor.aspx?CA](https://droughtmonitor.unl.edu/CurrentMap/StateDroughtMonitor.aspx?CA)