



California Crop Progress & Condition

Cooperating with the California Department of Food and Agriculture
Pacific Region • 650 Capitol Mall, Suite 6-100 • Sacramento, CA 95814 • (916) 738-6600 • (855) 270-2722 FAX •
www.nass.usda.gov/ca

WEEK ENDING: August 27, 2023
RELEASED: August 28, 2023

FREQUENCY: Weekly
VOL. 44 NO. 22

WEATHER

Average low temperatures for California ranged from 31 to 61 in the mountains, 50 to 86 in the desert, 51 to 69 along the coast, and 58 to 75 in the Central Valley. Average high temperatures for the state ranged from 47 to 90 in the mountains, 62 to 104 along the coast, 75 to 116 in the desert, and 77 to 101 in the Central Valley.

FIELD CROPS

In Sutter County, **sunflower** harvest continued. In the Sacramento Valley, **rice** was undamaged from Hurricane Hilary. In Stanislaus County, **alfalfa** hay, alfalfa silage, and **corn** silage harvests continued. Harvested corn fields were disced. In the San Joaquin Valley, no damage was reported to **cotton** fields from Hurricane Hilary, however the rain increased insect pressure. Cotton seed bugs were monitored. Cotton crops continued to make good progress. In Tulare County, summer row crop season was in full swing. Corn for silage was chopped. Alfalfa was cut, raked, and baled. Cotton continued to develop and cotton seed bugs were monitored.

FRUIT CROPS

Grapes were in many stages of development. Crews thinned vineyards to allow for additional sunlight exposure, better bunch formation, and improved color. Table grape harvest continued. Wine grape vineyards were sprayed for weeds. Some vineyards were damaged from rain and winds brought on from remnants of Hurricane Hilary. **Apricot** and **cherry** orchards were pruned. Stone fruit harvest was slowing. Some growers placed reflective tarps on orchard floors to improve color in developing fruit. **Figs** were harvested. **Kiwifruit** vineyards continued leafing out and were tied and irrigated. **Pomegranates** and **persimmons** continued to develop. Gala **apples** were harvested. **Pear** harvest was in full swing with Bartlett and Bosc varieties picked. **Olive** trees were trimmed. **Strawberry** growers were wrapping up their peak season. New crop plantings occurred in the Santa Maria area. Valencia **oranges**, **grapefruits**, and **mandarins** were picked and packed. **Lemon** and Navel orange harvests concluded. Some orange trees were topped and skirted.

NUT CROPS

The damage from Hurricane Hilary to **almond** and **pistachio** crop has yet to be fully evaluated. Almond harvest continued with orchard floors cleaned and trees shaken. **Walnuts**, pistachios, and **pecans** continued to mature. Almond and walnut orchards were sprayed for pests and weeds.

VEGETABLE CROPS

Processing **tomato** harvest continued in the Sacramento Valley, where growers sprayed fungicides to protect the crop from mold. **Pumpkin** harvest began in the Capay Valley. In San Joaquin County, **eggplant** harvest continued. In Stanislaus County, tomato, **sweet potato**, **garlic**, **watermelon**, **cantaloupe**, and **honeydew** harvests continued. **Broccoli** plants were transplanted, **cilantro** was sprayed for weeds, and pumpkins continued to develop. In Tulare County, growers continued to sell tomatoes, **cucumbers**, **peppers**, **sweet corn**, **squash**, watermelon, cantaloupe, and honeydew melons at local markets. Processing tomatoes continued to develop and were treated for pests. **Carrot** harvest continued in Kern County. Broccoli, **cauliflower**, squash, **lettuce**, and **brussel sprout** harvests continued along the Central Coast. Bell pepper and **celery** harvests were delayed due to rain from Hurricane Hilary in Ventura County.

LIVESTOCK

Foothill rangeland and non-irrigated pasture was mostly in fair condition. Irrigated pasture was in good to excellent condition. Some cattle were moved to higher elevations. Sheep grazed retired pasture and dormant alfalfa. Bees were active in squash fields.

CALIFORNIA CROP WEATHER – WEEK ENDING AUGUST 27, 2023

STATIONS	TEMPERATURE				GROWING DEGREE DAYS ¹ AT 50 °F BASE ²		RAIN DAYS ³	PRECIPITATION ⁴			
	Average for Week Ending Aug 27, 2023	Departure from Normal ⁵	High	Low	This Year	Normal Year ⁵	This Season	This Week	This Season	Normal Season ⁵	Normal Year ⁵
					Jan 1 - Aug 27, 2023	Jan 1 - Aug 27, 2023	Oct 1 - Aug 27, 2023	Week Ending Aug 27, 2023	Oct 1 - Aug 27, 2023	Oct 1 - Aug 27	Oct 1 - Sept 30
	-- Degrees Fahrenheit --				-- Number --		-- Days --	-- Inches of Precipitation --			
North Coast											
Eureka WFO	60	2	70	53	936	862	124	0.00	39.65	39.69	40.61
Ukiah	74	1	96	52	2,911	2,761	84	0.01	38.74	34.67	35.07
Santa Rosa	71	3	95	54	2,239	2,238	77	0.00	42.45	33.64	34.00
Napa State Hospital	70	3	95	52	2,168	2,137	71	0.00	29.54	20.16	20.36
Central Coast											
San Francisco	69	4	89	58	2,108	2,157	74	0.03	31.43	19.56	19.77
San Jose	74	4	95	59	2,598	2,745	66	0.00	15.32	13.40	13.58
Salinas	NA	NA	NA	NA	NA	2,028	NA	NA	NA	12.53	12.66
Monterey	66	3	82	57	1,413	1,823	65	0.00	23.81	16.17	16.36
Paso Robles	74	1	99	51	2,737	2,778	64	0.00	20.92	12.09	12.24
Sacramento Valley											
Redding	80	0	101	62	3,965	3,795	78	0.26	39.55	33.05	33.70
Red Bluff	79	0	100	61	3,846	3,713	74	0.09	27.15	22.92	23.25
Orland	NA	NA	NA	NA	NA	3,466	NA	NA	NA	21.14	21.52
Oroville	79	1	99	64	3,769	3,672	72	0.15	26.87	25.51	25.84
Marysville	78	2	100	58	3,442	3,423	59	0.14	22.90	19.95	20.21
Sacramento	78	3	98	59	3,447	3,196	64	0.01	24.67	17.87	18.10
San Joaquin Valley											
Stockton	78	1	99	58	3,340	3,564	60	0.00	23.23	13.37	13.53
Modesto	78	1	96	61	3,304	3,633	65	0.00	20.18	12.21	12.34
Merced Macready	79	2	98	60	3,471	3,497	56	0.01	19.47	11.75	11.87
Madera	79	1	101	58	3,572	3,692	52	0.00	11.16	10.76	10.86
Fresno	82	1	100	67	4,139	4,129	51	0.04	16.54	10.94	11.05
Lemoore	80	2	100	61	3,742	3,698	41	0.00	8.11	7.15	7.23
Visalia	80	2	97	62	3,879	3,688	55	0.07	15.67	10.25	10.37
Bakersfield	82	-1	98	69	4,226	4,385	52	0.00	10.45	6.31	6.40
Cascade Sierra											
Alturas	65	1	90	42	1,646	1,443	98	0.46	16.74	11.29	11.72
Mount Shasta	64	-2	87	42	2,102	1,606	103	0.69	45.74	37.08	37.86
Blue Canyon	65	-4	78	52	1,852	1,688	103	0.45	90.94	61.82	62.80
Yosemite Valley	NA	NA	NA	NA	NA	2,147	NA	NA	NA	39.76	40.65
South Coast											
Santa Maria	67	3	82	58	1,688	2,129	57	0.00	24.06	13.25	13.42
Santa Barbara	69	3	83	58	2,373	2,346	54	0.02	28.96	17.18	17.38
Oxnard	68	1	77	58	2,217	2,708	55	0.13	23.09	12.85	13.05
Riverside	79	-1	104	62	3,570	4,059	55	0.13	15.37	9.28	9.48
Los Angeles	69	-2	77	63	2,722	3,257	59	0.52	26.42	12.12	12.33
San Diego	71	-2	79	64	3,010	3,560	59	0.02	15.72	9.67	9.87
Southeast Interior											
Bishop	70	-5	93	50	2,768	2,927	44	0.05	16.61	4.72	4.87
Daggett	84	-4	101	64	4,702	4,962	25	0.00	2.81	3.58	3.80
Lancaster	77	-3	100	59	3,550	3,654	33	0.06	10.70	6.69	6.86
Thermal	92	2	114	76	5,780	5,954	17	0.00	1.59	2.61	2.98
Blythe	94	0	116	73	6,138	6,422	20	0.00	2.46	3.19	3.58
Imperial	90	-3	113	71	5,885	6,168	13	0.00	1.83	2.18	2.39

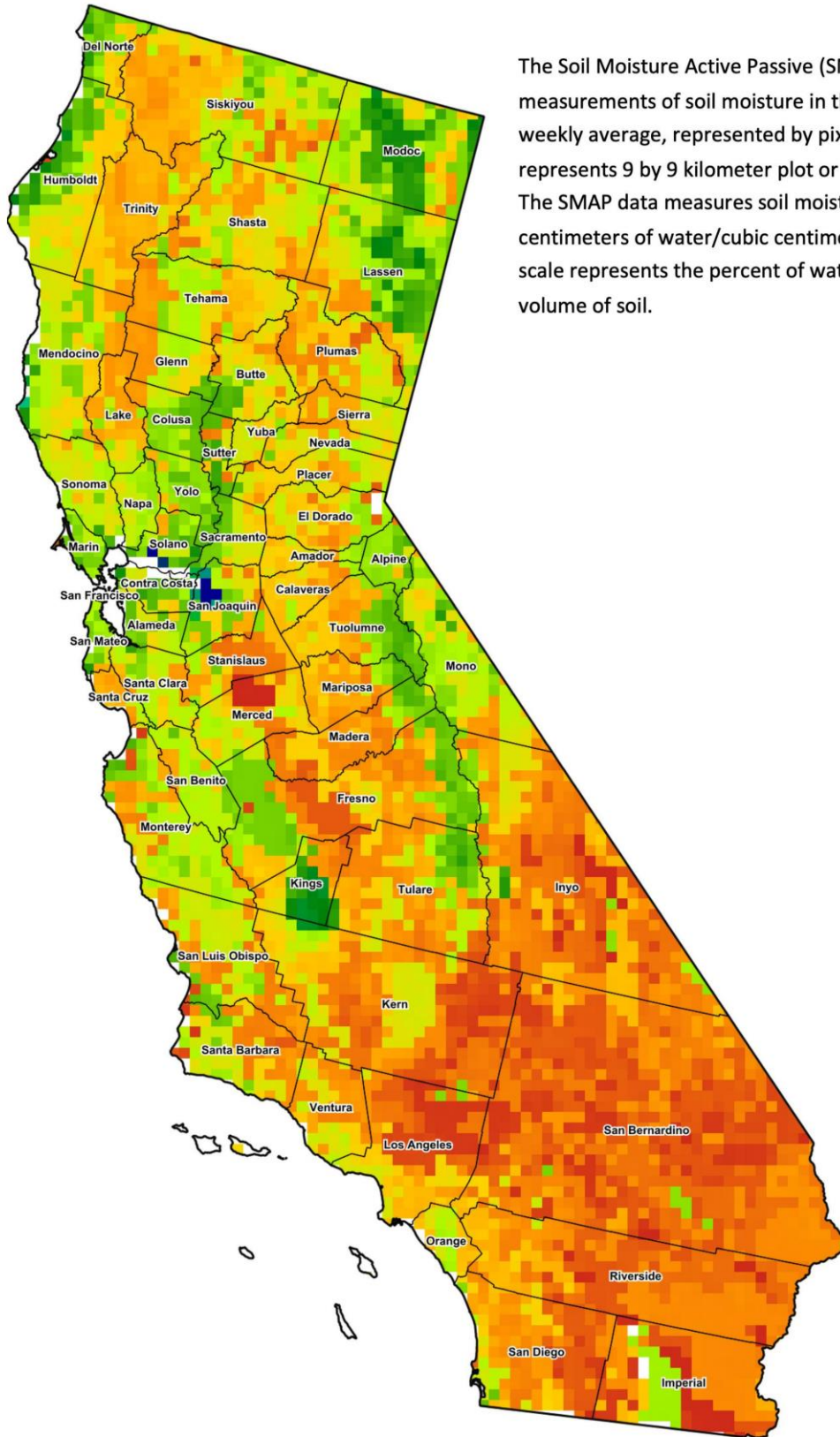
¹ Previously labeled as growing degree hours. The column title was corrected in the Sept 27, 2021 report.
² Previously calculated with 60 degree base. This calculation was changed for the 2022 and later seasons.
³ Total number of days with precipitation events this season.
⁴ Rain or melted snow/ice.
⁵ Normal periods 1990-2020 used in departure from normal calculations.

Data retrieved from NOAA and NWS. Calculated by USDA NASS.
 All rights reserved.

Reservoir Data from the California Department of Water Resources

Reservoir	Capacity	August 27, 2023			This Date Last Year	
		Storage	Percent of Capacity	Percent of Average	Storage	Percent of Capacity
		<i>Acre Feet</i>	<i>Percent</i>	<i>Percent</i>	<i>Acre Feet</i>	<i>Percent</i>
Shasta Lake	4,547,300	3,574,352	79	128	1,600,271	35
Lake Oroville	3,537,400	2,918,069	82	139	1,324,610	37
Trinity Lake	2,443,800	1,347,365	55	83	615,650	25
New Melones Reservoir	2,413,000	1,935,810	81	140	647,204	27
San Luis Reservoir	2,057,200	1,777,484	87	224	576,186	28
Don Pedro Reservoir	4,547,300	1,819,963	90	123	1,125,281	55

Source: cdec.water.ca.gov/reportapp/javareports?name=DLYHYDRO



Drought Conditions from the U.S. Drought Monitor as of 08/22/2023

Time	Percent of Land in Drought Rating						Drought Severity (DSCI)
	None	D0	D1	D2	D3	D4	
Current	93.33	5.30	1.38	0.00	0.00	0.00	8
Last Week	74.56	18.17	7.27	0.00	0.00	0.00	33
3 Months Ago	70.86	24.51	4.63	0.00	0.00	0.00	34
One Year Ago	0.00	0.24	2.24	54.36	26.59	16.57	357

The U.S. Drought Monitor is jointly produced by the National Drought Mitigation Center at the University of Nebraska-Lincoln, the United States Department of Agriculture, and the National Oceanic and Atmospheric Administration. droughtmonitor.unl.edu/CurrentMap/StateDroughtMonitor.aspx?CA