



California Crop Progress & Condition

Cooperating with the California Department of Food and Agriculture
Pacific Region • 650 Capitol Mall, Suite 6-100 • Sacramento, CA 95814 • (916) 738-6600 • (855) 270-2722 FAX •
www.nass.usda.gov/ca

WEEK ENDING: September 3, 2023
RELEASED: September 5, 2023

FREQUENCY: Weekly
VOL. 44 NO. 23

WEATHER

Average low temperatures for California ranged from 31 to 65 in the mountains, 47 to 72 along the coast, 47 to 89 in the desert, and 56 to 74 in the Central Valley. Average high temperatures for the state ranged from 47 to 92 in the mountains, 63 to 106 along the coast, 75 to 102 in the Central Valley, and 76 to 118 in the desert.

FIELD CROPS

In Sutter County, **sunflower** harvest continued. In the Sacramento Valley, heavy rainfall was seen in the northern part of the valley. Producers began preparation for **rice** and **corn** harvests. Worm damage was reported in **alfalfa** crops. In Stanislaus County, alfalfa hay, alfalfa silage, and corn silage harvests continued. Harvested silage corn fields were disced. In the San Joaquin Valley, **cotton** fields continued to be monitored as rain from Hurricane Hilary increased insect pressure. Overall, cotton crops continued to make good progress. In Tulare County, corn for silage continued to be chopped. Alfalfa was cut, raked, and baled. Cotton continued to develop.

FRUIT CROPS

Table **grape** harvest continued as growers attempted to assess the damage from Hurricane Hilary. Substantial losses were reported to mid-season grape varieties due to split and rot from Hurricane Hilary. Wine grape harvest began in some areas. **Apricot** and **cherry** orchards were pruned. **Peach**, **plum**, and **nectarine** harvests continued. **Figs** and **prunes** were harvested. **Pomegranates**, **kiwifruit**, and **persimmons** continued to develop. Gala **apples** were harvested. **Pear** harvest was in full swing with Bartlett and Bosc varieties picked. **Olive** trees were trimmed as growers prepared for harvest. **Strawberries** continued to develop with some reports of soft fruit and bruising due to high humidity and heat. Valencia **oranges**, **grapefruits**, and **mandarins** were picked and packed. **Lemon** and Navel orange harvests concluded. Some orange trees were topped and skirted.

NUT CROPS

The damage from Hurricane Hilary to **almond** and **pistachio** crop has yet to be fully evaluated. Almond harvest continued with orchard floors cleaned and trees shaken. **Walnuts**, pistachios, and **pecans** continued to mature. Almond and walnut orchards were sprayed for pests and weeds.

VEGETABLE CROPS

Processing **tomato** harvest continued in the Sacramento Valley. **Sweet corn** fields were treated for worms. **Pumpkin** harvest continued in the Capay Valley. In Sutter county, **squash** seed crops were windrowed and melon harvest began. In San Joaquin County, **eggplant** harvest continued. In Stanislaus County, tomato, **sweet potato**, **watermelon**, **cantaloupe**, and **honeydew** harvests continued. **Garlic** harvest was winding down. **Broccoli** plants were transplanted and pumpkins continued to develop. In Tulare County, growers continued to sell tomatoes, **cucumbers**, **peppers**, sweet corn, squash, watermelon, cantaloupe, and honeydew melons at local markets. **Carrot** harvest continued in Kern County. Broccoli, **celery**, **cauliflower**, squash, **lettuce**, and **brussel sprout** harvests continued along the Central Coast. Bell pepper harvest was delayed due to rain in Ventura County.

LIVESTOCK

Foothill rangeland and non-irrigated pasture were mostly in fair condition. Irrigated pasture was in good to excellent condition. Some cattle were grazing on higher elevation range. Sheep grazed retired pasture and dormant alfalfa. Bees were active in squash fields.

CALIFORNIA CROP WEATHER – WEEK ENDING SEPTEMBER 3, 2023

STATIONS	TEMPERATURE				GROWING DEGREE DAYS ¹ AT 50 °F BASE ²		RAIN DAYS ³	PRECIPITATION ⁴			
	Average for Week Ending Sep 3, 2023	Departure from Normal ⁵	High	Low	This Year	Normal Year ⁵	This Season	This Week	This Season	Normal Season ⁵	Normal Year ⁵
					Jan 1 - Sep 3, 2023	Jan 1 - Sep 3, 2023	Oct 1 - Sep 3, 2023	Week Ending Sep 3, 2023	Oct 1 - Sep 3, 2023	Oct 1 - Sep 3	Oct 1 - Sept 30
	-- Degrees Fahrenheit --				-- Number --		-- Days --	-- Inches of Precipitation --			
North Coast											
Eureka WFO	61	3	69	54	1,014	925	128	0.25	39.90	39.75	40.61
Ukiah	71	-1	97	52	3,064	2,921	84	0.00	38.74	34.68	35.07
Santa Rosa	70	2	98	47	2,382	2,366	77	0.00	42.45	33.65	34.00
Napa State Hospital	69	2	96	49	2,303	2,260	72	0.01	29.55	20.16	20.36
Central Coast											
San Francisco	68	3	91	58	2,239	2,269	74	0.00	31.43	19.57	19.77
San Jose	72	2	95	56	2,752	2,890	66	0.00	15.32	13.41	13.58
Salinas	NA	NA	NA	NA	NA	2,133	NA	NA	NA	12.53	12.66
Monterey	64	1	78	53	1,517	1,914	66	0.01	23.82	16.17	16.36
Paso Robles	71	-2	102	49	2,887	2,939	65	0.01	20.93	12.09	12.24
Sacramento Valley											
Redding	77	-2	101	60	4,155	3,999	79	1.39	40.94	33.10	33.70
Red Bluff	77	-1	102	59	4,034	3,914	74	0.00	27.15	22.93	23.25
Orland	NA	NA	NA	NA	NA	3,651	NA	NA	NA	21.16	21.52
Oroville	76	-1	99	62	3,954	3,864	73	0.01	26.88	25.51	25.84
Marysville	75	0	99	56	3,620	3,604	59	0.00	22.90	19.96	20.21
Sacramento	75	1	98	58	3,625	3,370	64	0.00	24.67	17.88	18.10
San Joaquin Valley											
Stockton	75	-1	99	58	3,521	3,753	60	0.00	23.23	13.37	13.53
Modesto	74	-2	95	57	3,476	3,822	66	0.01	20.19	12.21	12.34
Merced Macready	75	-2	99	57	3,652	3,686	56	0.00	19.47	11.75	11.87
Madera	76	-2	101	56	3,759	3,890	52	0.00	11.16	10.76	10.86
Fresno	80	0	100	66	4,355	4,345	51	0.00	16.54	10.94	11.05
Lemoore	77	0	102	56	3,934	3,893	41	0.00	8.11	7.15	7.23
Visalia	78	1	97	61	4,072	3,882	55	0.00	15.67	10.25	10.37
Bakersfield	82	0	102	67	4,452	4,610	52	0.00	10.45	6.31	6.40
Cascade Sierra											
Alturas	58	-5	92	37	1,706	1,535	102	0.34	17.08	11.36	11.72
Mount Shasta	63	-2	90	47	2,197	1,715	105	1.03	46.77	37.13	37.86
Blue Canyon	63	-5	82	49	1,948	1,819	106	0.82	91.76	61.87	62.80
Yosemite Valley	NA	NA	NA	NA	NA	2,297	NA	NA	NA	39.80	40.65
South Coast											
Santa Maria	66	1	88	50	1,803	2,234	58	0.03	24.09	13.26	13.42
Santa Barbara	70	4	88	58	2,519	2,458	54	0.00	28.96	17.18	17.38
Oxnard	70	3	84	60	2,363	2,827	56	0.03	23.12	12.85	13.05
Riverside	81	2	106	64	3,791	4,269	56	0.28	15.65	9.29	9.48
Los Angeles	73	2	85	65	2,888	3,410	60	0.02	26.44	12.13	12.33
San Diego	73	0	84	65	3,176	3,721	60	0.01	15.73	9.68	9.87
Southeast Interior											
Bishop	73	0	98	47	2,931	3,092	44	0.00	16.61	4.74	4.87
Daggett	87	1	109	69	4,966	5,218	26	0.08	2.89	3.62	3.80
Lancaster	79	0	103	61	3,755	3,860	33	0.00	10.70	6.70	6.86
Thermal	NA	NA	NA	NA	NA	6,229	NA	NA	NA	2.68	2.98
Blythe	95	2	118	74	6,456	6,726	21	0.19	2.65	3.28	3.58
Imperial	93	1	116	74	6,188	6,465	14	0.52	2.35	2.22	2.39

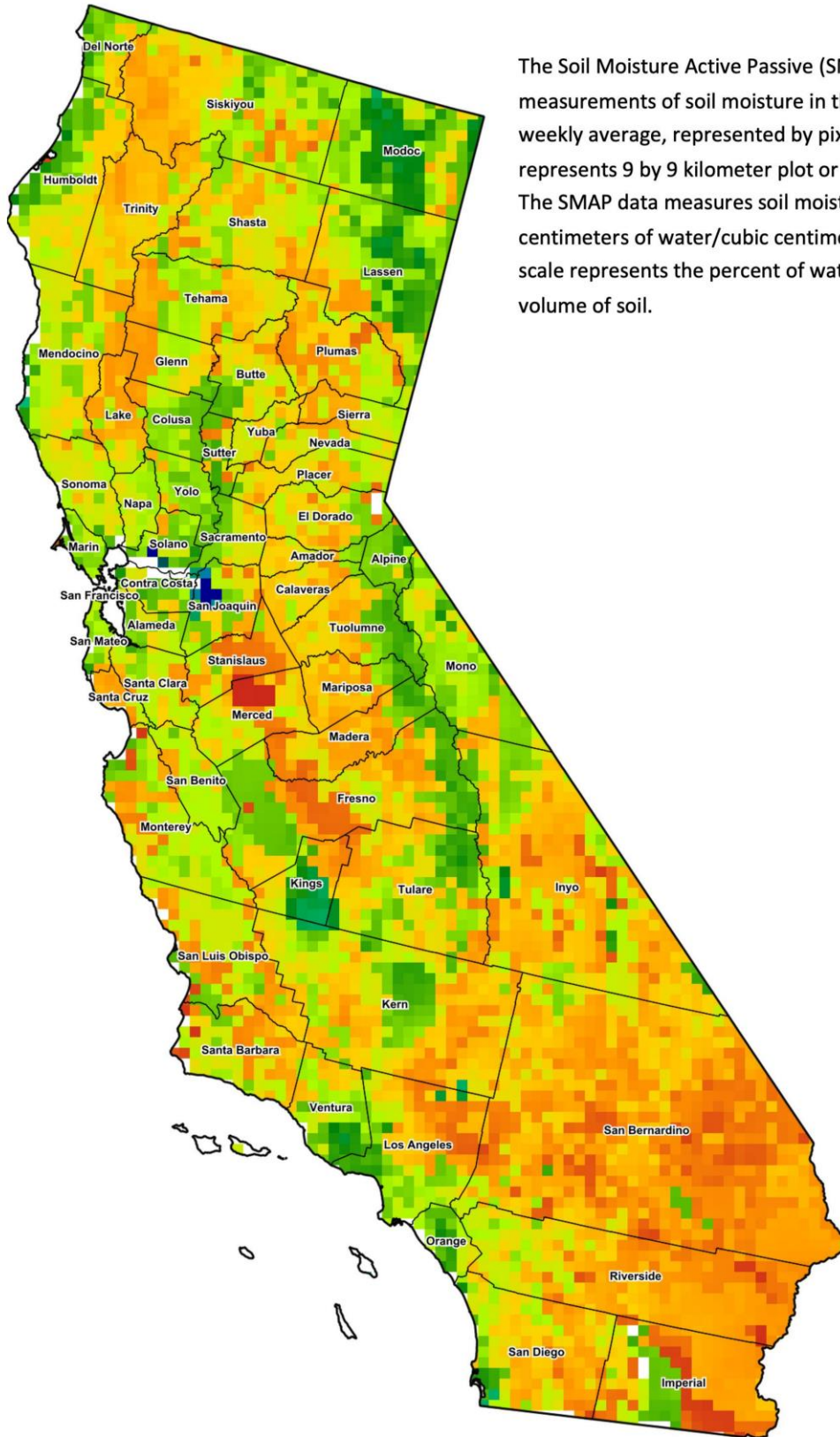
- ¹ Previously labeled as growing degree hours. The column title was corrected in the Sept 27, 2021 report.
- ² Previously calculated with 60 degree base. This calculation was changed for the 2022 and later seasons.
- ³ Total number of days with precipitation events this season.
- ⁴ Rain or melted snow/ice.
- ⁵ Normal periods 1990-2020 used in departure from normal calculations.

Data retrieved from NOAA and NWS. Calculated by USDA NASS.
All rights reserved.

Reservoir Data from the California Department of Water Resources

Reservoir	Capacity	September 4, 2023			This Date Last Year	
		Storage	Percent of Capacity	Percent of Average	Storage	Percent of Capacity
		<i>Acre Feet</i>	<i>Percent</i>	<i>Percent</i>	<i>Acre Feet</i>	<i>Percent</i>
Shasta Lake	4,547,300	3,501,489	77	129	1,576,064	35
Lake Oroville	3,537,400	2,829,600	80	138	1,300,842	37
Trinity Lake	2,443,800	1,335,139	55	84	598,005	24
New Melones Reservoir	2,413,000	1,912,029	80	140	636,304	27
San Luis Reservoir	2,057,200	1,760,155	86	222	561,011	27
Don Pedro Reservoir	4,547,300	1,800,989	89	123	1,109,606	55

Source: cdec.water.ca.gov/reportapp/javareports?name=DLYHYDRO



Drought Conditions from the U.S. Drought Monitor as of 08/29/2023

Time	Percent of Land in Drought Rating						Drought Severity (DSCI)
	None	D0	D1	D2	D3	D4	
Current	93.35	5.30	1.35	0.00	0.00	0.00	8
Last Week	93.33	5.30	1.38	0.00	0.00	0.00	8
3 Months Ago	70.88	24.49	4.63	0.00	0.00	0.00	34
One Year Ago	0.00	0.24	2.24	57.35	23.61	16.57	354

The U.S. Drought Monitor is jointly produced by the National Drought Mitigation Center at the University of Nebraska-Lincoln, the United States Department of Agriculture, and the National Oceanic and Atmospheric Administration. droughtmonitor.unl.edu/CurrentMap/StateDroughtMonitor.aspx?CA