



California Crop Progress & Condition

Cooperating with the California Department of Food and Agriculture
Pacific Region • 650 Capitol Mall, Suite 6-100 • Sacramento, CA 95814 • (916) 738-6600 • (855) 270-2722 FAX •
www.nass.usda.gov/ca

WEEK ENDING: September 17, 2023
RELEASED: September 18, 2023

FREQUENCY: Weekly
VOL. 44 NO. 25

WEATHER

Average low temperatures for California ranged from 31 to 66 in the mountains, 48 to 71 along the coast, 49 to 84 in the desert, and 54 to 72 in the Central Valley. Average high temperatures for the state ranged from 47 to 87 in the mountains, 60 to 98 along the coast, 81 to 104 in the Central Valley, and 87 to 105 in the desert.

FIELD CROPS

In the Sacramento Valley, **sunflower**, field **corn**, and **rice** fields were drying down with the help of warmer weather. Rice and **dry bean** harvests began. In Stanislaus County, **alfalfa** hay, alfalfa silage, and corn silage harvests continued. Harvested silage corn fields were fertilized and disced. In the San Joaquin Valley, **cotton** bolls continued to crack open. Insect pressure was light, but fields continued to be monitored for white fly and aphids. In Tulare County, corn for silage continued to mature and be chopped. Alfalfa was cut, raked, and baled. Cotton and corn fields continued to develop. In the Imperial Valley, **sudan grass** and alfalfa were baled.

FRUIT CROPS

Table **grape** harvest continued as growers attempted to assess the damage from Hurricane Hilary. Substantial losses were reported to mid-season grape varieties due to split and rot from Hurricane Hilary. Wine grape harvest continued. Late varieties of **plum**, **peach**, and **nectarine** harvest continued. **Cherry** orchards were treated for nematodes. **Figs** and **prunes** were harvested. **Pomegranates** and **kiwifruit** continued to develop. **Persimmons** were reaching mature size and will start to show color soon. **Apple** and **Pear** harvests continued. Table **olive** harvest began. **Strawberries** continued to develop despite poor weather conditions. Older **blueberry** fields were removed and replanted with newer varieties. Valencia **oranges**, **grapefruit**, and **mandarins** were harvested. District 2 **lemon** harvest continued. Some orange trees were topped and skirted.

NUT CROPS

Damage was reported in some **almond** orchards where trees had been shaken and nuts remained on the ground during Hurricane Hilary. Nuts still on trees prior to the hurricane sustained minimal to no damage. Almond harvest continued with orchard floors cleaned and trees shaken. **Pistachio** harvest began in some areas. **Walnuts** and **pecans** continued to mature. Almond and walnut orchards were sprayed for pests and weeds.

VEGETABLE CROPS

In San Mateo County, **pumpkin**, **tomato**, and **pepper** harvests continued. **Brussel sprout** harvest began. Processing tomato and pumpkin harvests continued in the Sacramento Valley. Fungicides were applied to reduce the development of mold on unharvested fields. In Sutter County, melon harvest continued. In San Joaquin County, **eggplant** harvest continued. In Stanislaus County, tomato, **sweet potato**, **watermelon**, **cantaloupe**, and **honeydew** harvests continued. **Broccoli** fields were mechanically weeded. In Tulare County, growers continued to sell tomatoes, **sweet corn**, **squash**, **onions**, **cucumbers**, **peppers**, watermelon, cantaloupe, and honeydew melons at local markets. **Carrot** harvest continued in Kern County. **Broccoli**, **celery**, **cauliflower**, squash, **lettuce**, **bell pepper**, and brussel sprout harvests continued along the Central Coast.

LIVESTOCK

Foothill rangeland and non-irrigated pasture were mostly in fair condition. Irrigated pasture was in good to excellent condition. Some cattle were grazing on higher elevation range and supplemental feeding began in the San Joaquin and Sacramento Valleys. Sheep grazed retired cropland as well as harvested melon and vegetable fields.

CALIFORNIA CROP WEATHER – WEEK ENDING SEPTEMBER 17, 2023

STATIONS	TEMPERATURE				GROWING DEGREE DAYS ¹ AT 50 °F BASE ²		RAIN DAYS ³	PRECIPITATION ⁴			
	Average for Week Ending Sep 17, 2023	Departure from Normal ⁵	High	Low	This Year	Normal Year ⁵	This Season	This Week	This Season	Normal Season ⁵	Normal Year ⁵
					Jan 1 - Sep 17, 2023	Jan 1 - Sep 17, 2023	Oct 1 - Sep 17, 2023	Week Ending Sep 17, 2023	Oct 1 - Sep 17, 2023	Oct 1 - Sep 17	Oct 1 - Sept 30
	-- Degrees Fahrenheit --				-- Number --		-- Days --	-- Inches of Precipitation --			
North Coast											
Eureka WFO	59	2	68	51	1,147	1,037	125	0.00	39.71	40.00	40.61
Ukiah	73	3	98	50	3,380	3,219	84	0.00	38.74	34.72	35.07
Santa Rosa	67	0	93	48	2,641	2,613	77	0.00	42.45	33.69	34.00
Napa State Hospital	67	1	81	50	2,548	2,494	72	0.00	29.56	20.18	20.36
Central Coast											
San Francisco	67	2	74	58	2,473	2,493	74	0.00	31.43	19.59	19.77
San Jose	71	2	85	56	3,053	3,169	66	0.00	15.32	13.43	13.58
Salinas	NA	NA	NA	NA	NA	2,343	NA	NA	NA	12.54	12.66
Monterey	62	0	72	50	1,693	2,096	67	0.00	23.83	16.19	16.36
Paso Robles	69	-2	93	49	3,179	3,242	66	0.00	20.94	12.11	12.24
Sacramento Valley											
Redding	80	4	102	60	4,560	4,378	79	0.00	40.94	33.27	33.70
Red Bluff	79	3	104	61	4,434	4,293	74	0.00	27.15	22.99	23.25
Orland	NA	NA	NA	NA	NA	4,006	NA	NA	NA	21.24	21.52
Oroville	77	2	96	59	4,334	4,224	73	0.00	26.88	25.56	25.84
Marysville	75	2	95	54	3,977	3,943	59	0.00	22.90	20.00	20.21
Sacramento	75	3	95	55	3,990	3,697	64	0.00	24.67	17.90	18.10
San Joaquin Valley											
Stockton	74	0	95	56	3,867	4,109	60	0.00	23.23	13.39	13.53
Modesto	74	0	92	59	3,827	4,177	67	0.00	20.21	12.23	12.34
Merced Macready	76	2	95	58	4,019	4,039	56	0.00	19.47	11.76	11.87
Madera	76	1	96	56	4,131	4,263	53	0.00	11.20	10.77	10.86
Fresno	79	1	95	63	4,777	4,750	51	0.00	16.54	10.95	11.05
Lemoore	78	3	97	56	4,322	4,259	41	0.00	8.11	7.16	7.23
Visalia	77	2	94	62	4,470	4,245	55	0.00	15.67	10.27	10.37
Bakersfield	80	1	95	65	4,885	5,032	52	0.00	10.45	6.33	6.40
Cascade Sierra											
Alturas	62	3	87	36	1,862	1,684	102	0.00	17.20	11.50	11.72
Mount Shasta	66	4	87	45	2,410	1,903	105	0.00	46.88	37.32	37.86
Blue Canyon	69	3	81	58	2,184	2,056	106	0.00	91.76	62.04	62.80
Yosemite Valley	NA	NA	NA	NA	NA	2,567	NA	NA	NA	39.96	40.65
South Coast											
Santa Maria	64	-1	73	55	2,009	2,444	58	0.00	24.09	13.28	13.42
Santa Barbara	68	3	85	59	2,786	2,681	54	0.00	28.96	17.20	17.38
Oxnard	67	0	78	61	2,627	3,065	57	0.00	23.13	12.88	13.05
Riverside	74	-3	95	61	4,162	4,665	57	0.00	15.69	9.34	9.48
Los Angeles	70	0	85	64	3,186	3,704	61	0.03	26.47	12.17	12.33
San Diego	72	0	86	67	3,498	4,039	60	0.00	15.73	9.72	9.87
Southeast Interior											
Bishop	70	1	90	49	3,204	3,383	45	0.00	16.63	4.77	4.87
Daggett	83	1	98	67	5,435	5,687	27	0.00	2.90	3.71	3.80
Lancaster	76	1	94	56	4,137	4,230	33	0.00	10.70	6.75	6.86
Thermal	89	3	104	74	6,637	6,746	17	0.00	1.59	2.85	2.98
Blythe	90	1	105	71	7,044	7,292	22	0.00	3.22	3.45	3.58
Imperial	88	0	104	71	6,729	7,021	14	0.00	2.35	2.29	2.39

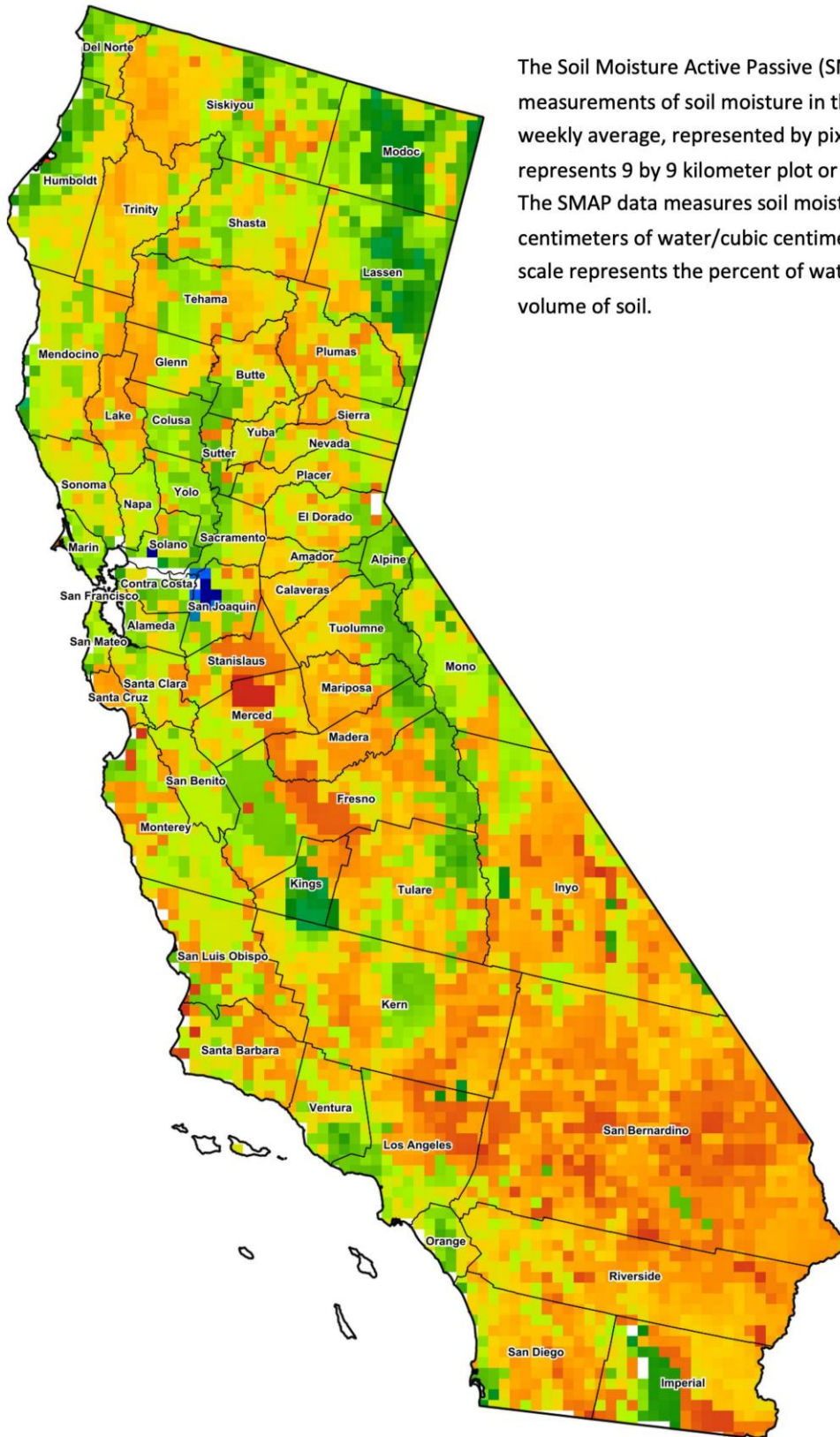
- ¹ Previously labeled as growing degree hours. The column title was corrected in the Sept 27, 2021 report.
- ² Previously calculated with 60 degree base. This calculation was changed for the 2022 and later seasons.
- ³ Total number of days with precipitation events this season.
- ⁴ Rain or melted snow/ice.
- ⁵ Normal periods 1990-2020 used in departure from normal calculations.

Data retrieved from NOAA and NWS. Calculated by USDA NASS.
All rights reserved.

Reservoir Data from the California Department of Water Resources

Reservoir	Capacity	September 10, 2023 ¹			This Date Last Year	
		Storage	Percent of Capacity	Percent of Average	Storage	Percent of Capacity
		<i>Acre Feet</i>	<i>Percent</i>	<i>Percent</i>	<i>Acre Feet</i>	<i>Percent</i>
Shasta Lake	4,547,300	3,450,510	76	129	1,556,767	34
Lake Oroville	3,537,400	2,777,885	79	138	1,281,153	36
Trinity Lake	2,443,800	1,326,083	54	84	585,124	24
New Melones Reservoir	2,413,000	1,906,327	79	140	630,682	26
San Luis Reservoir	2,057,200	1,713,192	84	211	543,485	27
Don Pedro Reservoir	4,547,300	1,778,424	88	123	1,091,684	54

¹ Reservoir data on September 17, 2023 was unavailable.
Source: cdec.water.ca.gov/reportapp/javareports?name=DLYHYDRO



The Soil Moisture Active Passive (SMAP) provides measurements of soil moisture in the root zone as a weekly average, represented by pixels. Each pixel represents 9 by 9 kilometer plot or about 20,000 acres. The SMAP data measures soil moisture in cubic centimeters of water/cubic centimeters of soil. The scale represents the percent of water in a given volume of soil.



Drought Conditions from the U.S. Drought Monitor as of 09/12/2023

Time	Percent of Land in Drought Rating						Drought Severity (DSCI)
	None	D0	D1	D2	D3	D4	
Current	93.54	6.24	0.22	0.00	0.00	0.00	7
Last Week	93.53	6.25	0.22	0.00	0.00	0.00	7
3 Months Ago	72.32	23.05	4.63	0.00	0.00	0.00	32
One Year Ago	0.00	0.24	5.70	53.15	24.34	16.57	351

The U.S. Drought Monitor is jointly produced by the National Drought Mitigation Center at the University of Nebraska-Lincoln, the United States Department of Agriculture, and the National Oceanic and Atmospheric Administration. droughtmonitor.unl.edu/CurrentMap/StateDroughtMonitor.aspx?CA