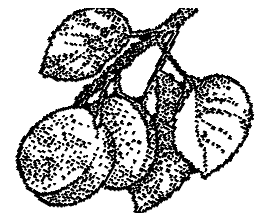


# 2005 California Prune (Dried Plum) Forecast



Released: June 3, 2005



USDA-NASS, CALIFORNIA STATISTICAL OFFICE

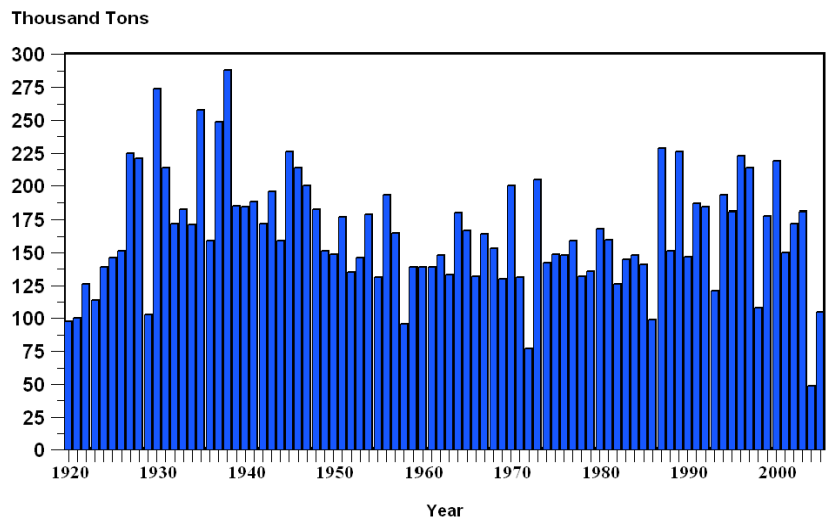
The 2005 California prune (dried plum) crop is forecast to be 105 thousand tons, up 114 percent from the 49 thousand tons in 2004. Total 2005 bearing acreage is estimated at 67,000. The French prune variety accounts for 97 percent of all prune acreage grown in California. The production forecast is based on a survey of prune growers conducted by the USDA-NASS, California Statistical Office from May 1-31, 2005.

The survey design used a stratified random sampling scheme based on total prune acreage for each operator. The sample is designed to give a State estimate of production for all growers.

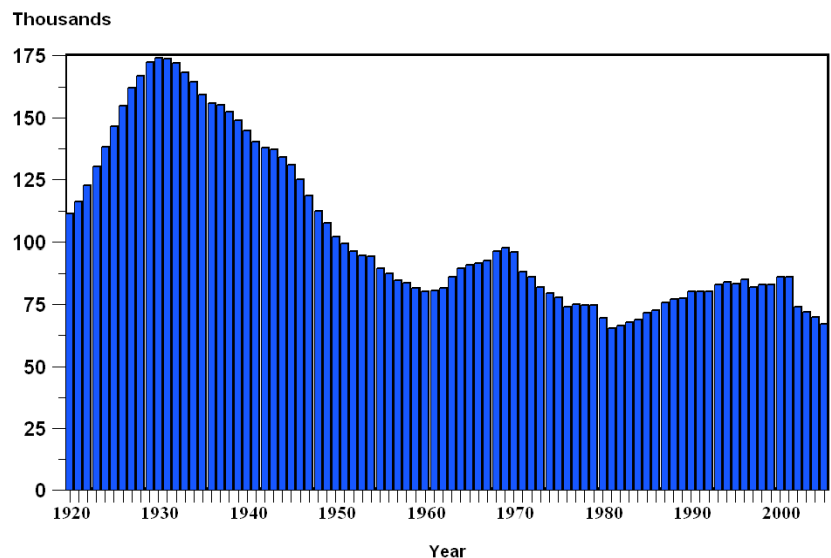
Questionnaires were mailed to growers on April 28, 2005 with return requested by May 12. Non-respondents were telephoned. Responses were received from 269 growers representing 47 percent of the total bearing acreage.

The 2005 prune crop once again suffered damage from high March temperatures during bloom. Hail damage was also reported in some areas. However, this year's crop is expected to be better than last year's crop, which was the smallest on record since official estimates began in 1920.

### California Prune Production - 1920-2005 (Dried Basis)



### California Prune Bearing Acres - 1920-2005



## California Prune (Dried Plum) Acreage, Production and Value, 1991-2005

Year	Bearing	Non-Bearing	Production	Yield Per Acre	Price Per Ton	Value of Production
	<i>Acres</i>		<i>Tons</i>		<i>Dollars</i>	<i>1,000 Dollars</i>
1991	80,200	6,500	187,000	2.33	940.00	175,780
1992	80,400	8,000	184,000	2.29	1,030.00	189,520
1993	83,000	11,000	121,000	1.46	1,120.00	135,520
1994	84,000	18,800	193,000	2.30	1,090.00	210,370
1995	83,500	23,200	181,000	2.17	1,040.00	188,240
1996	85,000	23,700	223,000	2.62	839.00	187,097
1997	82,000	21,300	214,000	2.61	883.00	181,015
1998	83,000	26,000	108,000	1.30	764.00	78,692
1999	83,000	22,000	178,000	2.14	861.00	142,065
2000	86,000	15,000	219,000	2.55	770.00	154,770
2001	86,000	11,000	150,000	1.74	726.00	98,010
2002	74,000	9,000	172,000	2.32	810.00	132,030
2003	72,000	8,000	181,000	2.51	772.00	129,696
2004	70,000	7,000	49,000	0.70	1,500.00	72,000
2005 a/	67,000	N/A	105,000	1.57	N/A	N/A

a/ Forecast

Source: USDA-NASS, California Statistical Office

VIC TOLOMEO  
Director

JACK RUTZ  
Deputy Director

GARY NELSON -- SHAWN CLARK  
Agricultural Statisticians, Estimates Group

Comments or questions should be directed to:  
USDA-NASS, California Statistical Office  
P.O. Box 1258  
Sacramento, CA 95812  
(916) 498-5161  
(916) 498-5186 (Fax)

**All USDA-NASS, California Statistical Office publications are available free of charge on the Internet at <http://www.nass.usda.gov/ca> (listed under "Publications").**