



# 2007 California Prune (Dried Plum) Forecast

Cooperating with the California Department of Food and Agriculture

California Field Office • P.O. Box 1258 • Sacramento, CA 95812 • (916) 498-5161 • (916) 498-5186 FAX • [www.nass.usda.gov/ca](http://www.nass.usda.gov/ca)

Released: June 1, 2007, 12:00 P.M. PDT

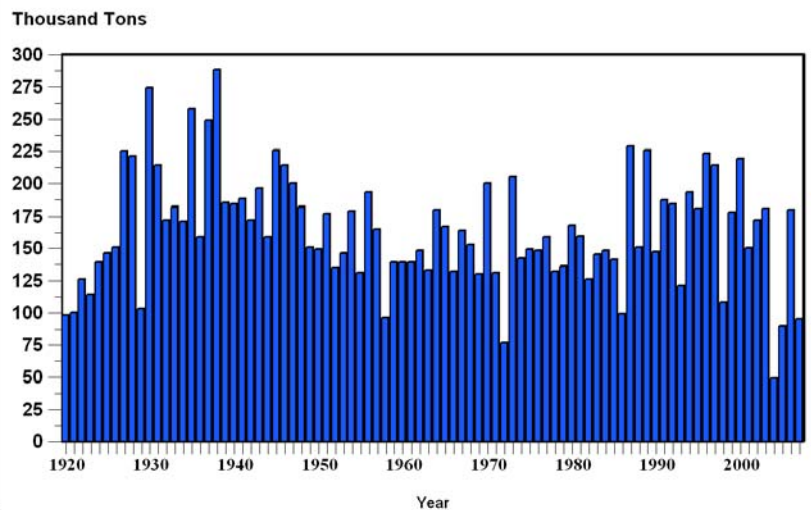
The 2007 California prune (dried plum) crop is forecast to be 95.0 thousand tons, down 47 percent from the 180 thousand tons in 2006. Total 2007 bearing acreage is estimated at 65,000. The French prune variety accounts for 97 percent of all prune acreage grown in California. The production forecast is based on a survey of prune growers conducted by the USDA, NASS, California Field Office from May 1-25, 2007.

The survey used a random sampling design based on total prune acreage for each operator. The sample is designed to provide a State estimate of production for all growers.

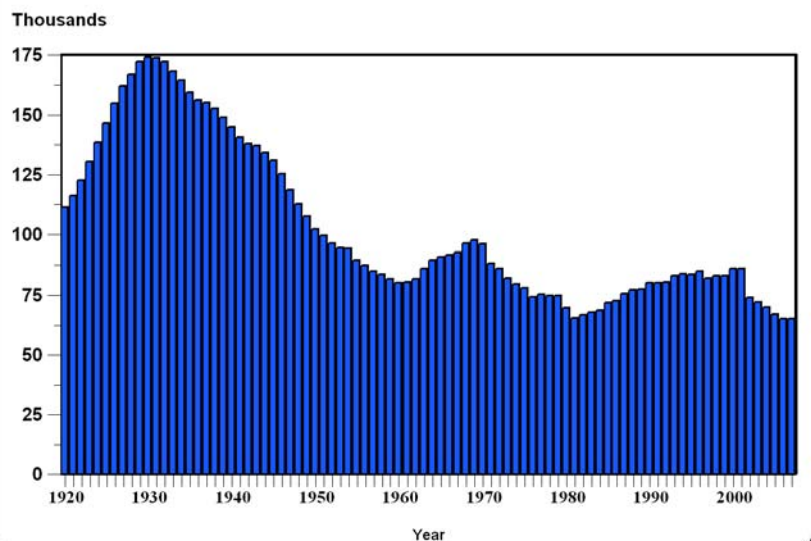
Questionnaires were mailed to growers on April 26, 2007 with return requested by May 18. Non-respondents were telephoned. Responses were received from 254 growers representing 57 percent of the total bearing acreage.

The 2007 prune crop experienced an extremely warm period during bloom. The bloom was also one of the shortest in recent years. As a result of poor pollination, a small set occurred statewide. Several growers reported loss of fruit due to the dry weather conditions that hampered bee pollination activities. Production was also hindered as a result of stressed orchards recovering from the previous year's high production. Many growers in Yuba and Sutter counties describe evidence of extremely low yields.

### California Prune Production - 1920-2007 (Dried Basis)



### California Prune Bearing Acres - 1920-2007



## California Prune (Dried Plum) Acreage, Production, and Value, 1990-2007

Year	Bearing	Non-Bearing	Production	Yield Per Acre	Price Per Ton	Value of Production
	<i>Acres</i>		<i>Tons</i>		<i>Dollars</i>	<i>1,000 Dollars</i>
1992	80,400	8,000	184,000	2.29	1,030.00	189,520
1993	83,000	11,000	121,000	1.46	1,120.00	135,520
1994	84,000	18,800	193,000	2.30	1,090.00	210,370
1995	83,500	23,200	181,000	2.17	1,040.00	188,240
1996	85,000	23,700	223,000	2.62	839.00	187,097
1997	82,000	21,300	214,000	2.61	883.00	181,015
1998	83,000	26,000	108,000	1.30	764.00	78,692
1999	83,000	22,000	178,000	2.14	861.00	142,065
2000	86,000	15,000	219,000	2.55	770.00	154,770
2001	86,000	11,000	150,000	1.74	726.00	98,010
2002	74,000	9,000	172,000	2.32	810.00	132,030
2003	72,000	8,000	181,000	2.51	772.00	129,696
2004	70,000	N/A	49,000	0.70	1,500.00	72,000
2005	67,000	7,500	97,000	1.45	1,470.00	138,180
2006	65,000	7,500	180,000	2.77	1,490.00	255,684
2007 <i>a/</i>	65,000	N/A	95,000	1.46	N/A	N/A

*a/* Forecast

Source: USDA, NASS, California Field Office

VIC TOLOMEO  
Director

JACK RUTZ -- SARAH HOFFMAN  
Deputy Directors

DOUG FLOHR -- JACKIE BROWN  
Estimates Group Statisticians

Comments or questions should be directed to:  
USDA, NASS, California Field Office  
P.O. Box 1258  
Sacramento, CA 95812  
(916) 498-5161  
(916) 498-5186 (Fax)

USDA is an equal opportunity provider and employer.

**USDA, NASS, California Field Office publications are available free-of-charge on the Internet at:  
<http://www.nass.usda.gov/ca>**