



2013 California Table Olive Probability Survey Report



California Department of Food and Agriculture, California Agricultural Statistics Service

Cooperating with the USDA, National Agricultural Statistics Service

Pacific Regional Office · P.O. Box 1258 · Sacramento, CA 95812 · (916) 498-5161 · (916) 498-5186 Fax · www.nass.usda.gov/ca

Released: August 12, 2013

CALIFORNIA TABLE OLIVE FORECAST FOR 2013

The 2013 California canning olive crop forecast is 75,000 tons, down 4 percent from last year's crop of 78,500 tons. Bearing acreage is estimated at 25,000 for a yield of 3.00 tons per acre.

The California canning olive crop outlook was looking positive, but the crop looks to be slightly lower than 2012. Weather conditions during the bloom period were generally good. The crop is 1-2 weeks ahead of normal. There were some isolated areas that had fruit loss that impacted the crop. Due to decreased water allocations compared with last year's and a drier than normal crop year, the San Joaquin Valley's water availability was significantly reduced.

VIC TOLOMEO, Director
KELLY KRUG – DAVE DEWALT, Deputy Directors

DOUG FLOHR – BRIAN KUGEL
Statisticians – Estimates Group

SURVEY METHODOLOGY

The USDA's National Agricultural Statistics Service designed the probability survey, developed a sampling procedure, and analyzed the data.

SURVEY SAMPLE

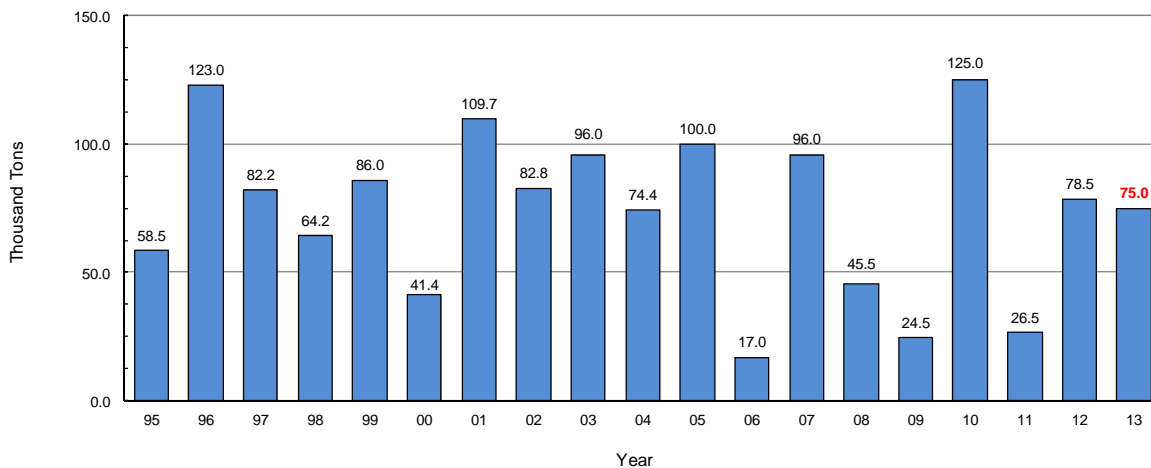
There were 217 growers sampled for the survey. Reports from 133 were used to establish this forecast. The sample is designed to provide a State estimate of all varieties; estimates by variety are less precise.

VARIETAL FORECAST

Growers were asked to estimate production by variety. The following table lists varietal level forecasts based on survey data.

Variety	2012	2013	<u>2013</u>
	Production	Forecast	2012
	Tons		Percent
Manzanillo	67,700	68,000	0
Sevillano	10,000	5,500	-45
Other	800	1,500	88
TOTAL	78,500	75,000	-4

California Table Olive Production 1995-2012, 2013 Forecast



California agricultural publications are available
free-of-charge on the Internet at:
www.nass.usda.gov/ca