



# California Processing Tomato Report

Cooperating with the California Department of Food and Agriculture  
California Field Office · P.O. Box 1258 · Sacramento, CA 95812 · (916) 498-5161 · (916) 498-5186 Fax · [www.nass.usda.gov/ca](http://www.nass.usda.gov/ca)

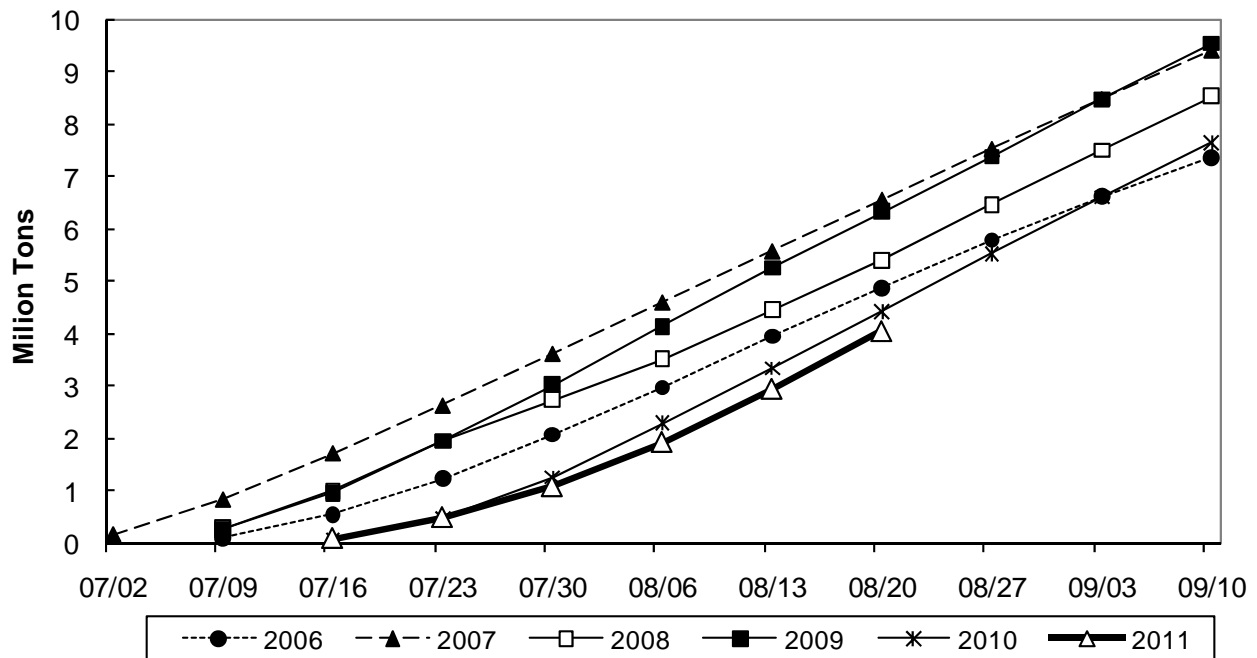
Released: August 31, 2011 – 12:00 p.m. PDT

## 2011 PROCESSING TOMATO PRODUCTION

Contracted production for California processing tomatoes is forecast at 12.2 million tons, averaging 47.47 tons per acre. The current forecast is down less than one percent from the 2010 crop. Similarly to last year, wet weather and cool temperatures were a factor this spring for processing tomato growers. The combination of disease and cool temperatures slowed plant growth.

As a result, harvest started about 10 to 14 days behind schedule in mid-July. Growers were applying fungicides to minimize bacterial speck damages. By August, harvest was well underway. The industry is paying close attention to the maturity of the crop. If too much is ready at the same time, it could cause delays at processing plants and gaps in production.

## California's Harvested Processing Tomatoes Weekly Cummulative Totals for 2006 through 2011



Source: Processing Tomato Advisory Board

**ACREAGE AND PRODUCTION (CONTRACT AND TOTAL) - CALIFORNIA**

Year	Total Crop				Contract Only				
	Planted Acres	Harvested Acres	Yield Tons/Acre	Production Tons	Planted Acres	Harvested Acres	Yield Tons/Acre	Production	
								Tons	Metric Tons
1991	322,000	312,000	31.71	9,893,520	320,000	310,000	31.68	9,820,000	8,908,557
1992	242,000	240,000	33.05	7,932,000	238,600	236,600	33.09	7,830,140	7,103,386
1993	282,000	274,000	32.67	8,951,707	280,000	272,000	32.68	8,890,240	8,065,092
1994	318,000	311,000	34.55	10,745,560	315,000	308,000	34.52	10,632,160	9,645,336
1995	331,000	317,000	33.46	10,605,787	329,000	315,000	33.25	10,472,980	9,500,930
1996	318,000	313,000	34.05	10,658,741	315,000	310,000	34.00	10,540,000	9,561,730
1997	270,000	260,000	35.93	9,342,309	267,000	257,000	35.96	9,241,720	8,383,950
1998	282,000	280,000	31.76	8,892,800	280,000	278,000	31.82	8,845,960	8,024,922
1999	337,000	329,000	37.20	12,239,300	332,000	324,000	37.01	11,990,270	10,877,393
2000	289,000	271,000	37.96	10,286,500	285,000	267,000	37.94	10,131,000	9,190,691
2001	258,000	254,000	34.02	8,640,140	255,000	251,000	34.12	8,563,570	7,768,742
2002	296,000	291,000	37.99	11,056,000	290,000	285,000	37.54	10,806,400	9,803,404
2003	289,000	274,000	33.77	9,252,000	286,000	271,000	33.73	9,141,000	8,292,578
2004	301,000	281,000	41.54	11,672,000	293,000	273,000	41.58	11,000,000	9,979,035
2005	267,000	264,000	36.36	9,600,000	263,000	260,000	36.31	9,440,000	8,563,826
2006	283,000	282,000	35.83	10,104,000	280,000	279,000	35.93	10,024,000	9,093,622
2007	301,000	296,000	40.82	12,082,000	298,000	293,000	40.96	11,965,000	10,854,468
2008	281,000	279,000	42.37	11,822,000	277,000	276,000	42.03	11,691,000	10,605,900
2009	312,000	308,000	43.23	13,314,000	308,000	304,000	43.25	13,148,000	11,927,668
2010	271,000	270,000	45.54	12,297,000	269,000	268,000	45.56	12,212,000	11,078,543
2011	---	---	---	---	258,000	257,000	47.47	12,200,000	11,067,657

VIC TOLOMEO, Director  
 SARAH HOFFMAN — KELLY KRUG, Deputy Directors  
 DOUG FLOHR — ROBERT JEUTONG, Estimates Group Statisticians

USDA-NASS, California Field Office publications are available free-of-charge on the Internet at: [www.nass.usda.gov/ca](http://www.nass.usda.gov/ca)