



Florida Agricultural Statistics Service
 1222 Woodward Street
 Orlando, Florida 32803
 407 / 648-6013

<http://www.nass.usda.gov/fl>

CITRUS

NOVEMBER FORECAST MATURITY TEST RESULTS AND FRUIT SIZE



November 9, 2001

ORANGES 231.0 MILLION BOXES

The October 1 forecasts for all states are repeated in this report since no November forecasts are made. The Florida all orange forecast is three percent more than the 223.3 million boxes recorded last season. During the past 10 seasons, the October forecast has deviated from final recorded utilization by an average of 3.6 percent--three of the seasons were above and the remaining seven were below the final estimates of utilization.

FCOJ YIELD 1.55 GALLONS PER BOX

Since there are no November forecasts of projections, the forecast for FCOJ remains at 1.55 gallons per box at 42.0 degrees Brix equivalent. Maturity test results on fruit collected October 29 and 30 are presented on page three. All averages are unadjusted as in prior seasons and provide a measure of change occurring in fruit still on the trees. The tests do not reflect the same levels of maturity as those being reported by processors from plant tests or plant recovery rates because the latter relate to fruit that has been harvested.

The final 2000-01 all orange season average FCOJ yield as reported by the Florida Citrus Processors Association was 1.58 gallons per box. The next FCOJ

FORECAST DATES 2001-02 SEASON

December 11, 2001
 January 11, 2002
 February 8, 2002
 March 8, 2002
 April 10, 2002
 May 10, 2002
 June 12, 2002
 July 11, 2002

projection will be released with the box forecasts on December 11. Separate projections for the early-midseason fruit and the later maturing Valencias will begin in the January report.

Citrus production, October 1, 2001
 forecasts by varieties and states, with comparisons

Crop and State	Production			Forecast
	1998-99	1999-00	2000-01	2001-02
--- 1,000 boxes ---				
Early, Midseason, and Navel Oranges:				
FLORIDA	112,000	134,000	128,000	131,000
California	21,000	40,000	36,000	32,000
Texas	1,250	1,460	2,000	2,000
Arizona	550	600	480	400
Total Above Varieties	134,800	176,060	166,480	165,400
Valencias:				
FLORIDA	74,000	99,000	95,300	100,000
California	15,000	24,000	23,000	22,000
Texas	180	200	235	200
Arizona	600	500	420	350
Total Valencias	89,780	123,700	118,955	122,550
All Oranges:				
FLORIDA	186,000	233,000	223,300	231,000
California	36,000	64,000	59,000	54,000
Texas	1,430	1,660	2,235	2,200
Arizona	1,150	1,100	900	750
Total All Oranges	224,580	299,760	285,435	287,950

CROP PROGRESS

Rainfall throughout Florida's citrus belt was extremely variable during October. Many coastal and southern citrus producing counties recorded above average rains while the central and upper interior counties had less than the normal amount of moisture. Temperatures were generally below normal for the month which helped slow the formation of new growth.

New crop fruit has continued to make very good progress. Most early types of fruit are currently showing very good on-tree color break. The good natural coloring has decreased the number of hours needed in the degreening rooms of the fresh fruit packing houses. Hamlin, Navels and Ambersweet oranges, along with white and colored grapefruit, tangerines, and a few K-Early's have all been shipped during the month. A few processors have been open and receiving packing house eliminations. By the end of October, several juice plants had opened to take field run oranges and grapefruit.

Caretakers have been very active cutting cover crops, spraying, pushing out dead trees and burning grove debris. A few of the larger growers are still planting resets in older groves.

**FLORIDA CITRUS: Distribution of 2000-01 production and 2001-02
forecast by marketing districts and fruit types**

Fruit type	Indian River		Gulf		Florida SunRidge		State total	
	2000-01	2001-02	2000-01	2001-02	2000-01	2001-02	2000-01	2001-02
- - - 1,000 boxes - - -								
ORANGES:								
Early-midseason-Navel	9,300	9,200	27,800	22,500	90,900	99,300	128,000	131,000
Valencia	9,800	11,000	28,200	24,400	57,300	64,600	95,300	100,000
Total All Oranges	19,100	20,200	56,000	46,900	148,200	163,900	223,300	231,000
GRAPEFRUIT:								
White	12,900	14,400	2,100	1,500	3,700	4,100	18,700	20,000
Colored	17,800	19,800	6,100	3,900	3,400	4,300	27,300	28,000
Total Grapefruit	30,700	34,200	8,200	5,400	7,100	8,400	46,000	48,000

Citrus production, October 1, 2001
forecasts by varieties and states, with comparisons

Crop and State	Production			Forecast
	1998-99	1999-00	2000-01	2001-02
- - - 1,000 boxes - - -				
Grapefruit:				
FLORIDA-All	47,050	53,400	46,000	48,000
White ^{1/}	18,350	21,500	18,700	20,000
Colored	28,700	31,900	^{2/} 27,300	28,000
Texas	6,100	5,930	7,200	7,800
Arizona	750	450	250	200
California	7,300	7,200	6,500	6,000
Total Grapefruit	61,200	66,980	59,950	62,000
Lemons:				
California	16,200	19,000	22,700	23,000
Arizona	3,450	3,100	3,600	3,100
Total Lemons	19,650	22,100	26,300	26,100
Limes: Florida	500	600	250	200
Temples: Florida	1,800	1,950	1,250	1,400
Tangelos: Florida	2,550	2,200	2,100	2,300
K-Early: Florida	80	110	40	50
Tangerines:				
FLORIDA-All	4,950	7,000	5,600	7,000
Early ^{3/}	3,050	4,350	3,550	4,800
Honey	1,900	2,650	2,050	2,200
California ^{4/}	1,500	2,500	2,100	2,500
Arizona ^{4/}	950	850	650	600
Total Tangerines	7,400	10,350	8,350	10,100

^{1/} Includes seedy. ^{2/} Excludes two million boxes of economic abandonment. ^{3/} Robinson, Fallglo, Sunburst, and Dancy. ^{4/} Includes tangelos.

**ESTIMATE OF PRODUCTION
BY MARKETING DISTRICTS**

Production forecasts made in October for Florida oranges and grapefruit have been divided between marketing districts for this report. These are shown in the table above with the 2000-01 production for comparisons. Marketing District II is the legally defined Indian River District along the East Coast. Marketing District III includes the Gulf counties of Charlotte, Collier, Glades, Hendry, and Lee. Marketing District I—the Florida SunRidge—includes all other citrus producing counties.

MATURITY AND WEATHER

The maturity test results reported on page three are from fruit collected October 29-30 and tested October 31 - November 2. Samples were collected from the same trees as the September and October surveys and reflect maturity levels for unharvested fruit.

Average pounds of solids from the latest maturity tests have not advanced as much as earlier in the season and are now lower than last season for all three orange types. Brix levels are near or lower than last season but with percent acid also lower, average ratios are higher for this time of year. The early fruit ratio of 13.36 is the highest for November 1 since the 1994-95 season when it was 14.29. Grapefruit ratios are also high for this time of year reflecting levels near the 1994-95 season.

Rainfall and temperatures were variable over the citrus growing areas during October. Fruit sizes are generally larger than last season at this time for all varieties. A distribution of sizes in two different measurements is illustrated on page four of this release.

Unadjusted Maturity Tests: Average of regular bloom fruit from sample groves, 2000-01 and 2001-02 seasons

Fruit type (No. groves) test date	Acid		Solids (Brix)		Ratio		Unfinished juice per box		Solids per box	
	2000-01	2001-02	2000-01	2001-02	2000-01	2001-02	2000-01	2001-02	2000-01	2001-02
	Percent		Percent				Pounds		Pounds	

Juice and solids per box are unadjusted and not comparable to plant test results.

ORANGES:

Early (117-115)

Sep 1	1.64	1.38	9.77	9.64	6.07	7.14	42.40	43.22	4.14	4.17
Oct 1	1.10	0.97	9.84	9.80	9.07	10.31	48.65	48.96	4.78	4.80
Nov 1	0.96	0.80	10.73	10.48	11.49	13.36	51.01	51.39	5.47	5.38

Midseason (55-55)

Sep 1	1.77	1.58	9.32	9.37	5.35	6.03	44.22	42.87	4.13	4.02
Oct 1	1.22	1.17	9.47	9.56	7.94	8.39	49.78	49.75	4.71	4.76
Nov 1	1.05	0.96	10.45	10.47	10.27	11.19	53.42	53.16	5.59	5.56

Late (150-150)

Sep 1	NA	NA	NA	NA	NA	NA	NA	NA	NA	NA
Oct 1	2.45	2.19	8.80	8.87	3.65	4.11	46.50	47.72	4.09	4.23
Nov 1	2.00	1.76	9.46	9.20	4.80	5.31	50.80	52.00	4.81	4.79

GRAPEFRUIT:

White Seedless (48-49)

Sep 1	1.83	1.66	10.18	9.81	5.57	5.93	32.50	33.90	3.31	3.33
Oct 1	1.59	1.45	10.26	9.73	6.49	6.71	36.56	38.83	3.74	3.78
Nov 1	1.50	1.32	10.41	9.82	6.96	7.44	40.45	42.16	4.20	4.14

Colored Seedless (47-44)

Sep 1	1.76	1.65	10.41	10.05	5.92	6.12	33.55	34.62	3.49	3.48
Oct 1	1.52	1.43	10.47	10.08	6.94	7.06	37.11	40.15	3.88	4.05
Nov 1	1.42	1.26	10.69	10.16	7.56	8.10	40.58	43.93	4.34	4.47

NOTICE: All samples were run through an FMC 091 machine using mechanical pressure only. This machine utilizes a .040 short strainer and standard 5/8-inch orifice tube. The beam settings are also identical to past tests and no restrictors are used.

Maturity test averages by areas, November 1, 2001

Fruit type	Groves sampled	Acid	Solids (Brix)	Ratio	Unfinished juice per box	Solids per box
	Number	Percent	Percent		Pounds	Pounds

ORANGES:

Early

Indian River Dist.	11	0.79	10.66	13.56	49.36	5.26
Other Areas	104	0.80	10.46	13.34	51.61	5.40

Midseason

Indian River Dist.	12	0.92	10.30	11.33	53.11	5.47
Other Areas	43	0.97	10.52	11.15	53.18	5.59

Late

Indian River Dist.	25	1.85	9.37	5.12	51.39	4.82
Other Areas	125	1.74	9.17	5.34	52.12	4.78

GRAPEFRUIT:

White Seedless

Indian River Dist.	36	1.33	9.88	7.44	41.70	4.12
Other Areas	13	1.31	9.65	7.45	43.43	4.20

Colored Seedless

Indian River Dist.	37	1.26	10.24	8.17	43.85	4.49
Other Areas	7	1.27	9.74	7.74	44.37	4.33

Florida Citrus: Size frequency distributions
from October measurements

Type of fruit and size in 4/5-bushel containers	1999	2000	2001
--- Percent ---			
Early and midseason oranges: (excluding Navels)			
64 and larger	1.3	0.2	1.3
80	9.5	2.9	5.7
100	29.8	17.2	23.1
125	36.4	38.4	37.9
163 and smaller	23.0	41.3	32.0
Navel oranges:			
64 and larger	60.6	41.6	49.0
80	25.9	35.0	32.3
100	10.4	19.4	15.1
125	2.7	3.3	3.0
163 and smaller	0.4	0.7	0.6
White seedless grapefruit:			
32 and larger	7.2	5.1	5.9
36	12.7	10.8	10.7
40	16.6	17.2	17.0
48	17.2	22.0	19.6
56	13.9	16.3	15.5
63 and smaller	32.4	28.6	31.3
Colored seedless grapefruit:			
32 and larger	4.8	3.2	2.8
36	9.6	7.6	9.0
40	14.0	14.6	14.1
48	19.3	20.4	18.8
56	15.0	17.9	17.6
63 and smaller	37.3	36.3	37.7
Fallglo tangerines:			
150 and larger	81.2	87.0	96.0
176	9.7	8.0	3.0
210	2.3	2.0	1.0
246	5.1	3.0	--
294 and smaller	1.7	--	--
Sunburst tangerines:			
150 and larger	50.2	55.7	40.6
176	15.5	18.2	18.5
210	13.6	13.1	17.0
246	11.4	8.1	15.5
294 and smaller	9.3	4.9	8.4
Tangelos:			
80 and larger	15.7	7.1	24.9
100	27.1	22.1	32.1
120	29.1	34.3	23.3
156 and smaller	28.1	36.5	19.7
Tempos:			
80 and larger	5.3	2.7	1.9
100	21.7	21.7	19.3
120	33.4	39.8	43.3
156 and smaller	39.6	35.8	35.5

The charts below describe the relationships of the fruit size measurements with those taken in the previous year. The diameter measurements shown are the minimum values of each eighth inch range, except for the smallest values.

CHART 1: Early and midseason oranges (excluding Navels) size frequency by diameter from October measurements.

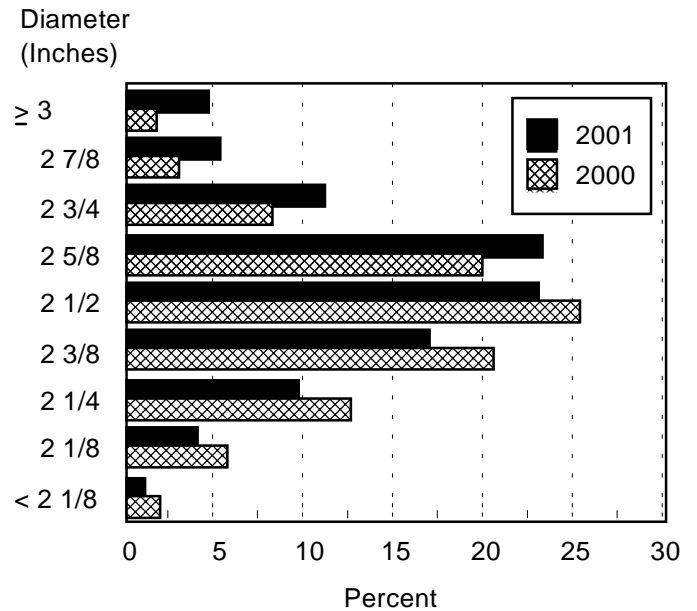


CHART 2: White seedless grapefruit size frequency by diameter from October measurements.

