



CITRUS MARCH FORECAST

MATURITY TEST RESULTS AND FRUIT SIZE

Cooperating with the Florida Department of Agriculture & Consumer Services
1222 Woodward St. · Orlando, FL 32803
(407) 648-6013 · (407) 648-6029 FAX · www.nass.usda.gov/fl

March 11, 2008

ALL ORANGES RAISED TO 167.0 MILLION BOXES

The Florida all orange forecast released today by the USDA Agricultural Statistics Board is increased to 167.0 million boxes. The change occurs in the early-midseason-Navel oranges (including Temples) at 82.0 million boxes, while Valencia oranges remain at 85.0 million boxes. If realized, this crop will be 29 percent greater than the production of 2006-07. In the past 10 seasons not affected by hurricanes, the March forecast has differed from actual production by an average of 1.9 percent, with four forecasts higher and six lower than the final figure.

EARLY-MIDSEASON-NAVELS NOW 82.0 MILLION BOXES

Forecast of the early-midseason-Navel oranges (including Temples) is raised to 82.0 million boxes. Objective size and drop surveys have concluded for these varieties. The route survey (Row Count) conducted February 27-28 in conjunction with certified utilization to date and an allocation for non-certified gift fruit are the indicators used in this forecast. Results of the Row Count show 87 percent of the rows inspected to be harvested. Estimated utilization for the season to March 1, including an allocation for non-certified fruit, has surpassed 77.2 million boxes.

The Navel portion of the crop is lowered to 3.0 million boxes. Weekly certifications have dropped below 25,000 boxes as harvest tapers

FORECAST DATES — 2007-08 SEASON	
April 9, 2008	June 10, 2008
May 9, 2008	July 11, 2008

off. The route survey indicated 97 percent of the available rows have been harvested.

VALENCIAS 85.0 MILLION BOXES

The Valencia forecast remains at 85.0 million boxes. If attained, this crop will be 34 percent more than harvested last season and the first to exceed the early-midseason-Navel orange production.

Fruit size continues to follow a track slightly below the monthly minimums of the past eight non-hurricane seasons. The current fruit size trend is projected to continue until the end of harvest. Although the droppage rate increased slightly during the past month, it remains below average. Less than one percent of the rows included in the route survey were harvested.

CITRUS PRODUCTION: MARCH 1, 2008
Forecasts by varieties and states, with comparisons

Crop and State	Production		Forecast	
	2005-06	2006-07	Feb 8, 2008	Mar 11, 2008
--- 1,000 boxes ---				
EARLY, MIDSEASON, AND NAVAL ORANGES:				
FLORIDA^{1/}	75,000	65,600	81,000	82,000
California	47,000	34,000	48,000	48,000
Texas	1,400	1,600	1,400	1,400
Arizona	250	200	250	250
Total Above Varieties	123,650	101,400	130,650	131,650
VALENCIAS:				
FLORIDA	72,700	63,400	85,000	85,000
California	14,000	11,000	15,000	16,000
Texas	200	380	385	385
Arizona	200	100	100	100
Total Valencias	87,100	74,880	100,485	101,485
ALL ORANGES:				
FLORIDA	147,700	129,000	166,000	167,000
California	61,000	45,000	63,000	64,000
Texas	1,600	1,980	1,785	1,785
Arizona	450	300	350	350
Total All Oranges	210,750	176,280	231,135	233,135

^{1/} Includes Temples beginning in 2006-07. Historic Temple production on page 2.

COMPONENTS USED IN THE MARCH FORECAST ^{1/}

Type	Bearing trees	Fruit per tree	Percent droppage	Fruit per box
	(1,000)			
ORANGES:				
Early-mid	24,473	1,052	8	264
Navel	1,284	440	10	138
Valencia	33,835	679	14	220

^{1/} Survey data is considered final in December for Navels, January for early-midseason oranges, and April for Valencias.

FCOJ YIELD 1.63 GALLONS PER BOX

The all orange projection of yield for FCOJ is raised to 1.63 gallons per box at 42.0 degrees Brix. This change results from the increased yield of the Valencia portion to 1.73 gallons per box, up from 1.70 last month. The early-midseason portion is continued at 1.53 gallons per box. All three projections are below the respective final yields for 2006-07.

Harvest of the early and midseason varieties is slowing and processing should be completed by mid-month. Limited quantities of Valencias have begun to arrive at processing plants.

GRAPEFRUIT 24.5 MILLION BOXES

The forecast of Florida grapefruit stands at 24.5 million boxes, including an allocation of 700,000 boxes for non-certified gift fruit and local sales. Of the total forecast, 7.5 million boxes are white and 17.0 million boxes are the colored varieties. If realized, this forecast will be 10 percent less than the harvest of 2006-07. In the past 10 non-hurricane seasons, the March forecast has differed from actual production by an average of 4.3 percent, with seven of the forecasts above and three below the final production.

Estimated utilization to March 1 is 14.2 million boxes of all grapefruit, slightly behind the 14.6 million boxes last season to the same date. Results of the Row Count conducted February 27-28 show 52 percent of the total rows harvested. The highest figure is 77 percent harvested in the Southern area. However, the primary grapefruit area—Indian River District—has only 48 percent harvested.

Although January data are considered final, an additional monthly size and drop survey was conducted in February. Very little growth occurred in **white** grapefruit and the average volume is the smallest on record for February. Droppage continues to be slightly above the maximum of recent non-hurricane seasons. The route survey indicated that 46 percent of the rows have been harvested. Estimated utilization to March 1 is almost 0.5 million boxes behind last season at this time.

CITRUS PRODUCTION: March 1, 2008
forecasts by varieties and States, with comparisons

Crop and State	Production		Forecast	
	2005-06	2006-07	Feb 8, 2008	Mar 11, 2008
	- - - 1,000 boxes - - -			
GRAPEFRUIT:				
Florida-All	19,300	27,200	24,500	24,500
White	6,500	9,300	7,500	7,500
Colored	12,800	17,900	17,000	17,000
California	6,000	4,000	5,000	5,000
Texas	5,200	7,100	6,600	6,600
Arizona	100	100	150	150
Total Grapefruit	30,600	38,400	36,250	36,250
LEMONS:				
California	22,000	16,000	17,000	17,000
Arizona	3,800	2,500	1,500	1,500
Total Lemons	25,800	18,500	18,500	18,500
TEMPLES:				
	700	^{1/}	^{1/}	
TANGELOS: Florida				
	1,400	1,250	1,300	1,500
TANGERINES:				
Florida-All	5,500	4,600	4,800	4,800
Early ^{2/}	2,850	2,400	2,600	2,600
Honey	2,650	2,200	2,200	2,200
California ^{3/}	3,600	2,900	5,100	5,100
Arizona ^{3/}	550	300	400	400
Total Tangerines	9,650	7,800	10,300	10,300

^{1/} Included in early-midseason-Navel oranges.

^{2/} Fallglo and Sunburst varieties.

^{3/} Includes tangelos and tangors.

COMPONENTS USED IN THE MARCH FORECAST ^{1/}

Type	Bearing trees	Fruit per tree	Percent droppage	Fruit per box
	(1,000)			
GRAPEFRUIT:				
White ^{2/}	1,862	557	18	99
Colored	4,155	499	12	109

^{1/} January data is considered final.

^{2/} Seedless variety only.

Components for the **colored** varieties were tracked for an additional month. Average fruit sizes for both January and February are the smallest in a series dating back to 1968. While the final drop at 12 percent is slightly above the average of the past eight non-hurricane seasons, the rate of loss slowed in February and the actual value this month is slightly below average for March. Estimated utilization, which had been lagging last season's actual production, has now surpassed it at 10.4 million boxes.

ALL TANGERINES 4.8 MILLION BOXES

The forecast of all tangerines remains at 4.8 million boxes, unchanged since December 2007. Comprising the total are 2.6 million boxes of the early category and 2.2 million boxes of the late category.

The initial forecast at 2.6 million boxes of early tangerines (Fallglo and Sunburst varieties) has held through the season. Harvest of the **Fallglo** variety is complete with estimated production final at 650,000 boxes. Weekly **Sunburst** certifications have dropped to 1,000 boxes, all for processing, for the week ending on March 2. Estimated utilization is final at 1.95 million boxes.

The **Honey** tangerine forecast is continued at 2.2 million boxes. Although January objective survey data is considered final, a follow-up survey was conducted in February. In both months, the current volume was the smallest since 1996, excluding the hurricane seasons. Droppage increased at a near normal rate but remained below the average of the eight recent non-hurricane seasons. With only 14 percent of the route survey's rows harvested, Row Count is not yet considered a reliable indicator.

TANGELOS NOW 1.5 MILLION BOXES

The tangelo forecast is raised 200,000 boxes, to 1.5 million boxes, including an allocation of 100,000 boxes for non-certified use. Weekly certifications tapered off slowly in February and continue at levels higher than last season. Estimated utilization to March 1 is 1.46 million boxes. Nearly 93 percent of the rows included in the monthly route survey have been harvested. If realized, this forecast will be 20 percent more than last season's harvest.

UNADJUSTED MATURITY TESTS: Average of regular bloom fruit from sample groves, 2006-07 and 2007-08 seasons

Fruit type (No. groves) test date	Acid		Solids (Brix)		Ratio		Unfinished juice per box		Solids per box	
	2006-07	2007-08	2006-07	2007-08	2006-07	2007-08	2006-07	2007-08	2006-07	2007-08
	<i>Percent</i>		<i>Percent</i>				<i>Pounds</i>		<i>Pounds</i>	

Juice and solids per box are unadjusted and not comparable to plant test results.

ORANGES:

Late (150 - 149)

Sep 1	NA	NA	NA	NA	NA	NA	NA	NA	NA	NA
Oct 1	2.50	2.62	8.91	9.47	3.59	3.66	45.74	43.86	4.08	4.15
Nov 1	2.02	1.95	9.82	9.27	4.94	4.82	48.76	48.85	4.79	4.53
Dec 1	1.70	1.70	9.88	10.11	5.89	6.02	51.65	52.22	5.10	5.28
Jan 1	1.41	1.36	10.88	11.14	7.84	8.27	51.81	53.58	5.63	5.97
Feb 1	1.22	1.25	11.96	11.92	9.94	9.65	54.55	54.50	6.52	6.49
Mar 1	1.12	1.13	12.59	12.56	11.36	11.21	54.58	54.81	6.88	6.88

NOTICE: All samples were run through an FMC 091 machine using mechanical pressure only. This machine utilizes a .040 short strainer and standard 5/8-inch orifice tube. The beam settings are also identical to past tests and no restrictors are used.

MATURITY TEST AVERAGES BY AREAS, MARCH 1, 2008

Fruit type	Groves sampled	Acid	Solids (Brix)	Ratio	Unfinished juice per box	Solids per box
	<i>Number</i>	<i>Percent</i>	<i>Percent</i>		<i>Pounds</i>	<i>Pounds</i>

ORANGES:

Late

Indian River District	25	1.18	12.75	10.91	54.75	6.98
Other Areas	124	1.12	12.52	11.27	54.82	6.86

FRUIT SIZE COMPARISONS BY TYPES TO PREVIOUS SEASONS

Size frequency distributions developed from the February size survey are shown in the following table. The distributions are by percent of fruit falling within the size range of each 4/5-bushel container. These frequency distributions relate to fruit from regular bloom and exclude summer bloom in all years.

FLORIDA CITRUS: Size frequency distributions from February measurements

Type of fruit and size in 4/5-bushel containers	2006	2007	2008
	--- Percent ---		
VALENCIA ORANGES:			
64 and larger	2.5	12.6	5.1
80	12.9	30.8	19.7
100	35.4	35.7	37.0
125	31.9	16.0	25.8
163 and smaller	17.3	4.9	12.4
WHITE SEEDLESS GRAPEFRUIT:			
32 and larger	30.2	36.6	8.6
36	24.9	23.1	18.7
40	20.3	16.3	19.3
48	10.1	10.4	20.7
56	5.8	6.5	12.8
63 and smaller	8.7	7.1	19.9
COLORED SEEDLESS GRAPEFRUIT:			
32 and larger	19.8	22.8	6.0
36	17.6	22.8	15.0
40	24.5	21.3	14.9
48	16.4	15.1	17.3
56	10.9	9.1	15.0
63 and smaller	10.8	8.9	31.8
HONEY TANGERINES:			
80 and larger	24.5	48.2	26.5
100	38.7	31.1	33.4
120	23.1	12.5	24.2
176	5.5	4.1	8.4
210 and smaller	8.2	4.1	7.5

The charts to the right describe the relationships of the fruit size measurements with those taken in the previous year. The diameter measurements shown are the minimum values of each eighth inch range, except for the smallest values.

CHART 1: Valencia size frequency by diameter from February measurements

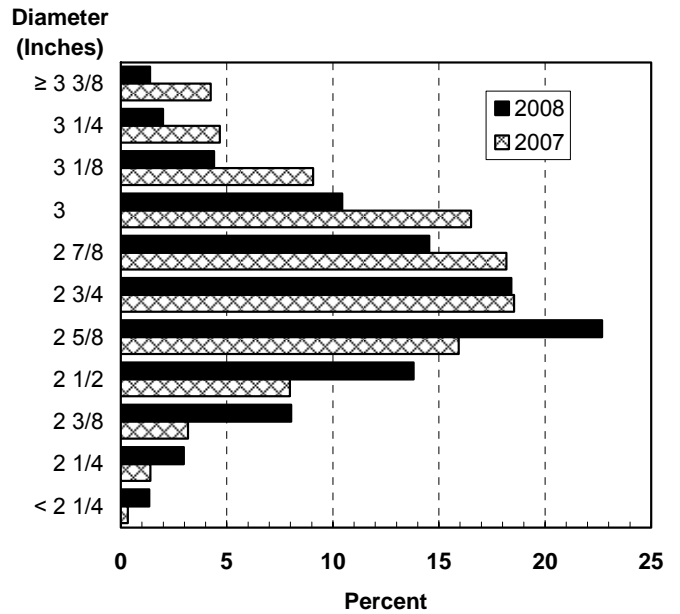


CHART 2: White seedless grapefruit size frequency by diameter from February measurements

