



Florida Agricultural Statistics Service
 1222 Woodward Street
 Orlando, Florida 32803
 407 / 648-6013

<http://www.nass.usda.gov/fl>

WEATHER & CROP NEWS

Week ending August 26, 2001

Released 4:00 P.M.

August 27, 2001

**FLORIDA
 AGRICULTURE**



WEATHER SUMMARY: Hot, humid weather prevailed during the week. Scattered thunderstorms added varying amounts of moisture to the State during the week of August 19 through August 25. Rain amounts at the major stations ranged from traces at Tallahassee and Daytona to over two inches in Miami and Key West. Drier weather in many areas allowed field work to continue. Temperatures mostly averaged one degree above to one degree below normal for the week. Daytime highs were in the 90s and nighttime lows were in the 60s and 70s.

FIELD CROPS: Topsoil moisture conditions are rated mostly short to adequate with scattered areas of very short or surplus moisture. Corn harvest is starting. Wet soil conditions are delaying the start of peanut harvest in some areas. Haying is active. Tobacco harvest is winding down. Peanut condition is rated 28 percent fair, 43 percent good, and 29 percent excellent. Corn, cotton, soybeans, and sugarcane remain in good condition.

Moisture Rating	Topsoil		Subsoil	
	Last week	This week	Last week	This week
	Percent			
Very short	0	2	0	2
Short	25	16	17	17
Adequate	57	60	67	61
Surplus	18	22	16	20

LIVESTOCK AND PASTURES: In the Panhandle, cattlemen are making hay and preparing land for winter grazing and small grains. In the north counties, pasture condition is mostly fair. The condition is lower than the previous week due to dry soil. In the central area, pastures are green but grass is short due to dry soil conditions. In the southwest, range condition varies from poor to good, depending on recent rains. Some pastures have standing water. Statewide, cattle condition is mostly good.

Condition	Range		Cattle	
	Last week	This week	Last week	This week
	Percent			
Very poor	0	0	0	0
Poor	5	5	0	0
Fair	15	25	15	25
Good	75	70	80	75
Excellent	5	0	5	0

CITRUS: This was a typical late August week with regards to heat and moisture. It was very hot and humid in the groves of Florida and there were also scattered rains and thunderstorms. Some interior groves saw very little rain while the coastal and southern counties had a few good soakings. Indian River, St. Lucie, Martin, Hendry and Collier counties had areas that recorded from two to five inches of rain. The warm temperatures, high humidity and frequent rains have generated an abundance of new growth on trees of all ages. New crop fruit continues to make very good progress with the current ideal growing conditions. Testing of grapefruit for early shipments continues in several areas.

Caretakers have been very active chopping, disking and mowing cover crops that have grown out of control. Growers are also herbiciding under trees and around irrigation sprinklers where weeds are usually a problem. Fertilizing, liming and spraying continue in all well-cared-for groves. Dead and dying trees are being removed and burned.

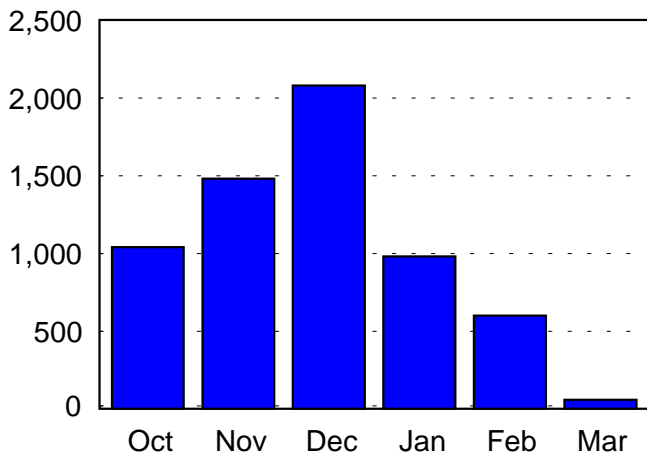
VEGETABLES: Okra harvesting in Dade County has slowed due to lower prices. Improved weather increased fieldwork in some areas. Planting of round varieties of tomatoes is gaining around Immokalee and in the Palmetto-Ruskin and East Coast regions. Plant condition is fair to good. Growers are spraying to control insects and diseases. Growers are transplanting peppers, eggplant, and are beginning to seed cucumbers.

In cooperation with the Florida Cooperative Extension Service whose county directors participate in supplying field information.

MONTHLY UTILIZATION OF FRESH SELECTED ORANGES 2000-2001 SEASON

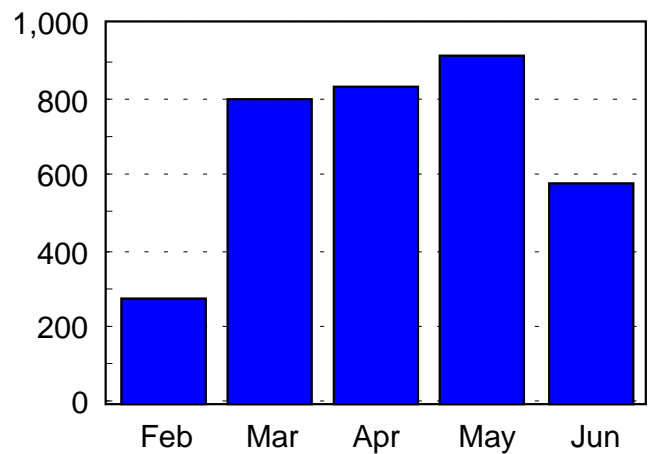
Early-mid-Navel Oranges

Thousand boxes



Valencia Oranges

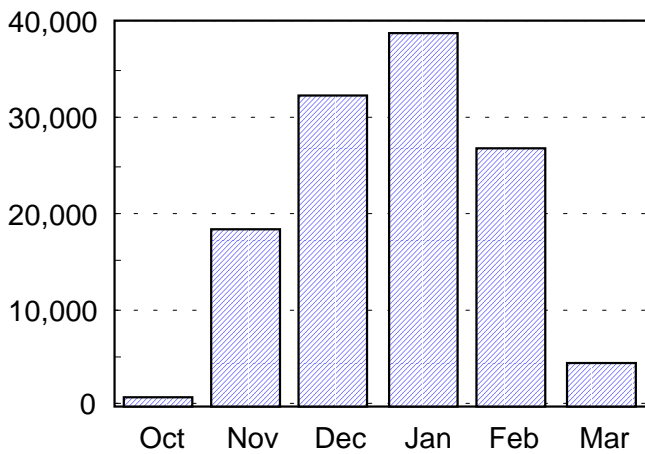
Thousand boxes



MONTHLY UTILIZATION OF PROCESSED SELECTED ORANGES 2000-2001 SEASON

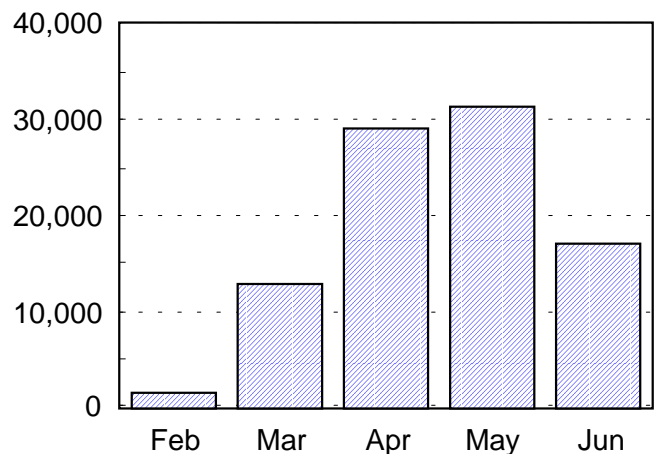
Early-mid-Navel Oranges

Thousand boxes



Valencia Oranges

Thousand boxes



To receive this report via e-mail, send an e-mail message to listserv@newsbox.usda.gov with the following message: **add usda-fl-crop-weather your-email-address your.name (optional) An example: add usda-fl-crop-weather jsmith@qtm.com john smith.** The report will be e-mailed automatically to your e-mail address each week.