



# Georgia Crop Progress & Condition Report

In Cooperation with the Georgia Department of Agriculture

Georgia Field Office · 355 East Hancock Avenue, Suite 320 · Athens, GA 30601 · (706) 546-2236  
www.nass.usda.gov

May 9, 2011

Media Contact: Douglas G. Kleweno  
nass-ga@nass.usda.gov

**General:** According to the National Agriculture Statistics Service's Georgia Field Office, there were 6.3 days suitable for fieldwork for the week ending Sunday, May 8, 2011. Statewide topsoil moistures were rated at 17% very short, 38% short, 41% adequate, and 4% surplus. Subsoil moisture for the State was 11% very short, 40% short, 46% adequate, and 3% surplus. Precipitation estimates for the week in Georgia ranged from no rain up to 1.0 inches. The week's average temperature ranged from the mid 50s to the mid 70s.

Crop Progress				
Crop	This Week	Last Week	2010	5-Yr Avg
	Percent			
Blueberries - Harvested	17	N/A	N/A	N/A
Cotton - Planted	20	15	26	25
Hay First Cutting Comp.	38	28	N/A	N/A
Oats - Harvested	11	8	N/A	N/A
Onions - Harvested	60	59	29	39
Peaches - Harvested	2	2	1	1
Peanuts - Planted	15	7	11	12
Rye - Harvested	12	6	N/A	N/A
Sorghum - Planted	21	19	17	20
Soybeans - Planted	3	2	11	10
Winter Wheat - Harvested	3	N/A	0	N/A

Crop Condition					
Crop	VP	P	F	G	EX
	Percent				
Blueberries	0	0	37	49	14
Corn	0	4	38	48	10
Hay	4	16	36	41	3
Pasture & Range	2	19	34	38	7
Peaches	0	1	12	40	47
Pecans	0	3	50	36	11
Tobacco	0	4	44	49	3
Watermelons	0	1	42	53	4
Winter Wheat	0	4	28	56	12

VP- Very Poor, P-Poor, F-Fair, G-Good, EX- Excellent

## County Extension Comments

"I have seen some cereal leaf beetle on wheat. No use to spray the wheat is too far along."

**Ricky Ensley, Polk County, District 10**

"Light frost in some areas of the county. Little if any damage."

**Eddie Ayers, Fannin County District 20**

"Planting has drawn to a standstill for dry land crops waiting for a rain to raise soil moisture; good wheat is going backwards because of lack of rain; pastures and hayfields are drought stressed."

**Roger Sinyard, Marion County, District 40**

"Planting stopped last week due to lack of moisture. Some has resumed after a spotty light rain that covered some of the county."

**Brent Allen, Johnson County, District 50**

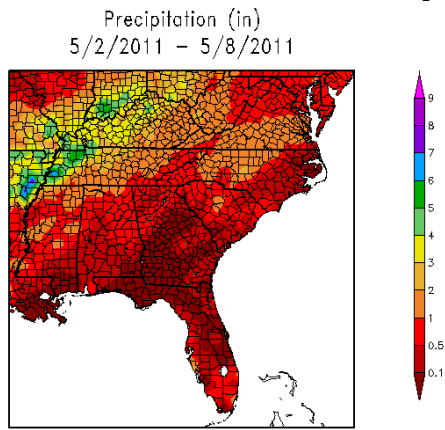
"Need rain, we have stopped planting until we get a good rain event."

**Don Clark, Grady County, District 70**

"Hail damage on a field of watermelons and cantaloupes Tuesday night. Getting dry in Crisp Co."

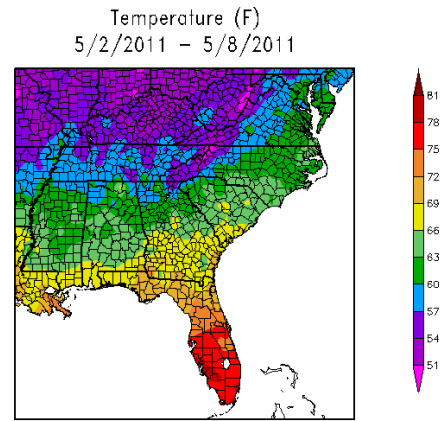
**Tucker Price, Crisp County, District 80**

# Southeastern U.S. Precipitation & Average Temperature



Generated 5/9/2011 at HPRCC using provisional data.

Regional Climate Centers



Generated 5/9/2011 at HPRCC using provisional data.

Regional Climate Centers

<http://www.hprcc.unl.edu/>

<http://www.hprcc.unl.edu/>

## U.S. Drought Monitor Georgia

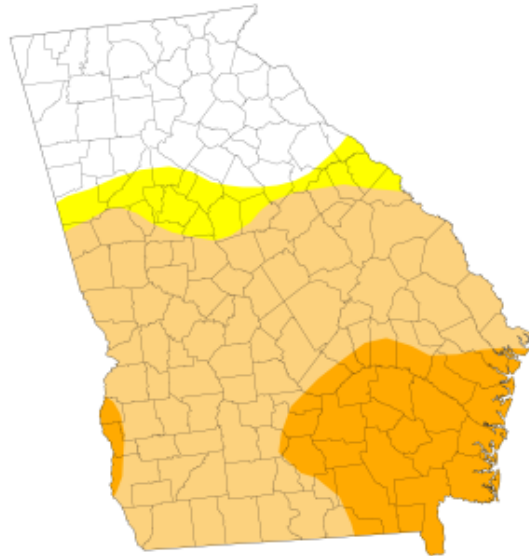
May 3, 2011  
Valid 7 a.m. EST

Drought Conditions (Percent Area)

	None	D0-D4	D1-D4	D2-D4	D3-D4	D4
Current	23.24	76.76	69.87	18.79	0.00	0.00
Last Week (04/26/2011 map)	23.24	76.76	72.35	18.79	0.00	0.00
3 Months Ago (02/01/2011 map)	0.00	100.00	85.28	40.63	6.18	0.00
Start of Calendar Year (12/29/2010 map)	2.42	97.58	85.37	40.34	6.49	0.00
Start of Water Year (09/28/2010 map)	4.80	95.20	39.24	5.11	0.00	0.00
One Year Ago (04/27/2010 map)	98.49	1.51	0.00	0.00	0.00	0.00

Intensity:

- D0 Abnormally Dry
- D1 Drought - Moderate
- D2 Drought - Severe
- D3 Drought - Extreme
- D4 Drought - Exceptional



The Drought Monitor focuses on broad-scale conditions. Local conditions may vary. See accompanying text summary for forecast statements.

<http://drought.unl.edu/dm>



Released Thursday, May 5, 2011  
Rich Tinker, NOAA/NWS/NCEP/CPC