



United States Department of Agriculture  
National Agricultural Statistics Service  
**Georgia Crop Progress  
and Condition Report**



Cooperating with the Georgia Department of Agriculture and the Cooperative Extension Service  
Southern Regional Field Office · 355 East Hancock Avenue, Suite 100 · Athens, GA 30601 · (706) 546-2236  
www.nass.usda.gov

October 10, 2017

Media Contact: Jim Ewing

**General**

According to the National Agricultural Statistics Service in Georgia, there were 6.3 days suitable for fieldwork for the week ending October 8, 2017. Precipitation estimates for the state ranged from no rain up to 2.2 inches. Average high temperatures ranged from the low 90s to the mid 70s. Average low temperatures ranged from the mid 70s to the mid 50s.

**County Comments**

Conditions continued hot and dry until the fallout from Hurricane Nate brought a few sprinkles on Saturday and over 2 inches of rain on Sunday.

**Heather Kolich, Forsyth County**

Drought conditions county-wide are preventing planting of winter grazing for livestock producers and hay inventory is depleting.

**Bobby Solomon, Talbot County**

Everything is looking good, just trying to get it out of the field. Some began planting winter crops and onion beds are looking great. The livestock look pretty good on top of everything else.

**Chris Earls, Candler County**

Peanut and cotton harvest are moving along well in Seminole County. Peanuts are looking good but dryland maturity was stalled from a dry spell. Cotton defoliation was happening last week and pickers are moving to the fields.

**Andrew Warner, Seminole County**

Some peanut fields were plowed early before this weekend due to concerns about Hurricane Nate. Overall, peanuts appear to be earlier than expected. Aerial defoliation of cotton is underway and the two local gins have been up and running for about a week.

**Joshua Grant, Crisp County**

**Crop Progress for Week Ending 10/08/17**

Crop stage	This week (percent)	Prev week (percent)	Prev year (percent)	5 Year avg (percent)
Cotton - Bolls Opening...	91	84	93	88
Cotton - Harvested.....	19	11	21	14
Hay - 3rd Cutting.....	86	80	NA	NA
Oats - Planted.....	15	6	15	17
Peanuts - Dug.....	56	44	60	46
Peanuts - Harvested.....	41	29	43	31
Pecans - Harvested.....	3	NA	4	4
Rye - Planted.....	22	13	11	18
Sorghum - Harvested.....	79	77	65	56
Soybeans - Dropping				
Leaves.....	63	51	72	NA
Soybeans - Harvested....	22	14	21	12
Winter wheat - Planted...	3	NA	1	6

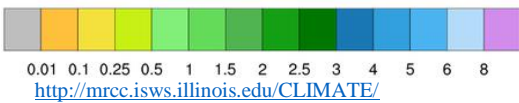
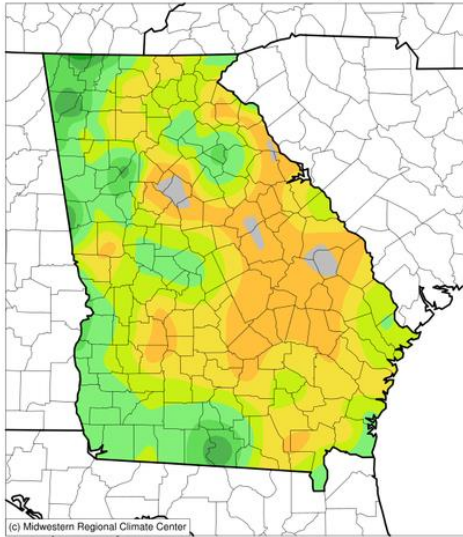
**Conditions for Week Ending 10/08/17**

Crop	Very poor (percent)	Poor (percent)	Fair (percent)	Good (percent)	Excellent (percent)
Cattle.....	0	3	24	60	13
Cotton.....	7	19	28	40	6
Pasture and range.....	2	8	33	52	5
Peanuts.....	1	5	18	53	23
Pecans.....	4	9	34	46	7
Soybeans.....	1	6	25	59	9

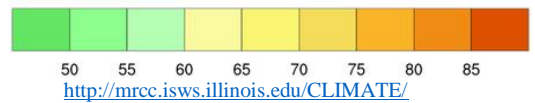
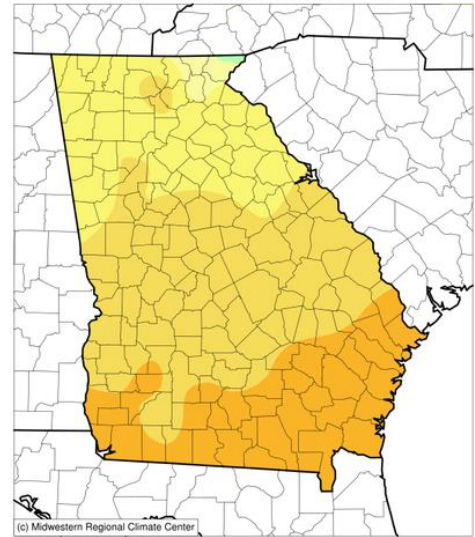
**Soil Moisture for Week Ending 10/08/17**

Topsoil	This week (percent)	Previous week (percent)	5 Year avg (percent)
Very short.....	10	6	9
Short.....	38	42	29
Adequate.....	49	49	53
Surplus.....	3	3	9
Subsoil	This week (percent)	Previous week (percent)	5 Year avg (percent)
Very short.....	8	4	9
Short.....	34	29	30
Adequate.....	57	66	55
Surplus.....	1	1	6

**Accumulated Precipitation (in)**  
October 02, 2017 to October 08, 2017



**Average Temperature (°F)**  
October 02, 2017 to October 08, 2017



## U.S. Drought Monitor Georgia

**October 3, 2017**

(Released Thursday, Oct. 5, 2017)

Valid 8 a.m. EDT



*Drought Conditions (Percent Area)*

	None	D0-D4	D1-D4	D2-D4	D3-D4	D4
<b>Current</b>	100.00	0.00	0.00	0.00	0.00	0.00
<b>Last Week</b> 09-26-2017	100.00	0.00	0.00	0.00	0.00	0.00
<b>3 Months Ago</b> 07-04-2017	98.97	1.03	0.00	0.00	0.00	0.00
<b>Start of Calendar Year</b> 01-03-2017	11.31	88.69	73.48	39.33	19.28	0.00
<b>Start of Water Year</b> 09-26-2017	100.00	0.00	0.00	0.00	0.00	0.00
<b>One Year Ago</b> 10-04-2016	35.32	64.68	51.86	37.46	15.01	2.29

**Intensity:**

- D0 Abnormally Dry
- D1 Moderate Drought
- D2 Severe Drought
- D3 Extreme Drought
- D4 Exceptional Drought

*The Drought Monitor focuses on broad-scale conditions. Local conditions may vary. See accompanying text summary for forecast statements.*

**Author:**

Anthony Artusa  
NOAA/NWS/NCEP/CPC



<http://droughtmonitor.unl.edu/>