



United States Department of Agriculture
National Agricultural Statistics Service
**Georgia Crop Progress
and Condition Report**



Cooperating with the Georgia Department of Agriculture and the Cooperative Extension Service
Southern Regional Field Office · 355 East Hancock Avenue, Suite 100 · Athens, GA 30601 · (706) 546-2236
www.nass.usda.gov

April 23, 2018

Media Contact: Jim Ewing

General

According to the National Agricultural Statistics Service in Georgia, there were 5.4 days suitable for fieldwork for the week ending Sunday, April 22, 2018. Precipitation estimates for the state ranged from no rain to 3.5 inches. Average high temperatures ranged from the low 60s to the high 70s. Average low temperatures ranged from the mid 30s to the high 50s.

County Comments

Rain and wind caused widespread lodging in small grains and ryegrass. High winds made spraying for weeds in pasture and hay difficult. Planting of corn and soybeans was even more delayed by field conditions.

Adam Speir, Madison County

We received a fair amount of rain in certain parts of the county. Warm days with cold nights slowed down soil temperature. Tobacco transplanting should be finished by the middle of next week. Onions were harvested as fast as they could be clip. Livestock looked really good.

Chris Earls, Treutlen County

Multiple days of high winds this week made pesticide applications difficult. Watermelons were setting runners. Corn was at various stages of growth. Pecan fungicide spraying was underway.

Joshua Grant, Crisp County

Recent rain helped to maintain good soil moisture, so growers could continue planting corn and small acres of cotton and peanuts. However, high winds associated with each storm caused significant damage to sensitive, recently transplanted vegetables.

Ty Torrance, Grady County

Much lodging was seen in wheat and oats after the storm last weekend. Corn started to show some problems with nematodes and deficiencies, but overall, it still looked good. Cotton and peanut planting really picked up late in the week, but the storm this Sunday will probably keep farmers out of the fields for the next day or two.

Andrew Warner, Seminole County

Crop Progress for Week Ending 04/22/18

Crop stage	This week (percent)	Prev week (percent)	Prev year (percent)	5 Year avg (percent)
Blueberries - Blooming...	96	94	100	97
Blueberries - Harvested..	6	NA	11	3
Corn - Planted.....	89	81	88	85
Corn - Emerged.....	77	59	78	NA
Cotton - Planted.....	4	1	6	3
Hay - 1st Cutting.....	6	1	18	6
Onions - Harvested.....	14	3	36	19
Peanuts - Planted.....	2	NA	5	3
Tobacco - Transplanted..	78	47	68	63
Winter wheat - Headed...	88	77	84	NA

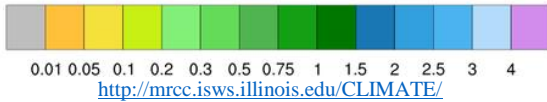
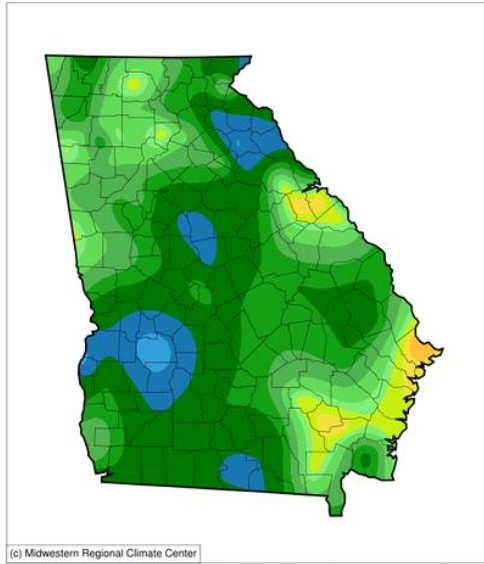
Conditions for Week Ending 04/22/18

Crop	Very poor (percent)	Poor (percent)	Fair (percent)	Good (percent)	Excellent (percent)
Blueberries.....	6	21	25	39	9
Cattle.....	0	4	22	63	11
Corn.....	0	4	22	65	9
Oats.....	1	3	40	49	7
Onions.....	0	0	23	56	21
Pasture and range.....	1	6	33	50	10
Peaches.....	6	14	21	54	5
Rye.....	0	2	35	58	5
Winter wheat.....	0	2	32	56	10

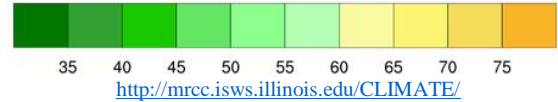
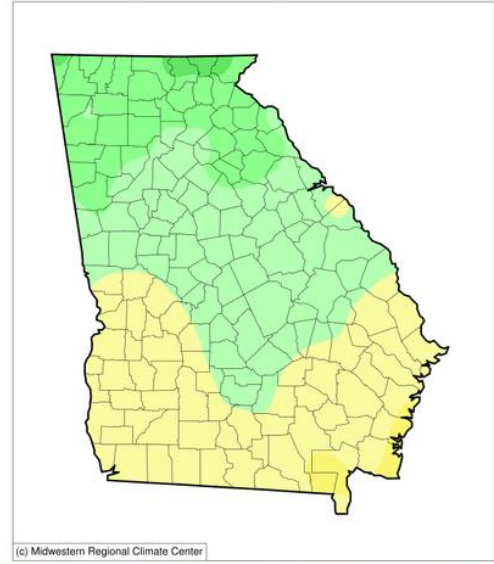
Soil Moisture for Week Ending 04/22/18

Topsoil	This week (percent)	Previous week (percent)	5 Year avg (percent)
Very short.....	2	2	4
Short.....	13	17	14
Adequate.....	68	72	59
Surplus.....	17	9	23
Subsoil	This week (percent)	Previous week (percent)	5 Year avg (percent)
Very short.....	2	2	3
Short.....	19	21	13
Adequate.....	73	75	65
Surplus.....	6	2	19

Accumulated Precipitation (in)
April 16, 2018 to April 22, 2018

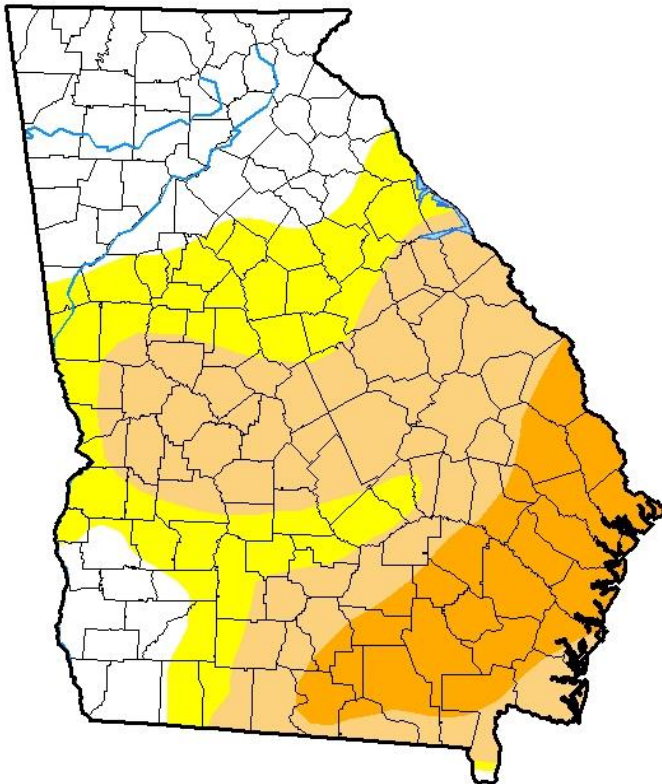


Average Temperature (°F)
April 16, 2018 to April 22, 2018



U.S. Drought Monitor Georgia

April 17, 2018
(Released Thursday, Apr. 19, 2018)
Valid 8 a.m. EDT



Drought Conditions (Percent Area)

	None	D0-D4	D1-D4	D2-D4	D3-D4	D4
Current	28.20	71.80	49.84	16.71	0.00	0.00
Last Week 04-10-2018	23.69	76.31	56.92	17.72	0.00	0.00
3 Months Ago 01-16-2018	2.27	97.73	37.54	10.33	0.00	0.00
Start of Calendar Year 01-02-2018	12.14	87.86	40.66	0.00	0.00	0.00
Start of Water Year 09-26-2017	100.00	0.00	0.00	0.00	0.00	0.00
One Year Ago 04-18-2017	2.75	97.25	59.16	12.77	3.68	0.00

Intensity:

- D0 Abnormally Dry
- D1 Moderate Drought
- D2 Severe Drought
- D3 Extreme Drought
- D4 Exceptional Drought

The Drought Monitor focuses on broad-scale conditions. Local conditions may vary. See accompanying text summary for forecast statements.

Author:

Brad Rippey
U.S. Department of Agriculture



<http://droughtmonitor.unl.edu/>