



United States Department of Agriculture
National Agricultural Statistics Service
Georgia Crop Progress
and Condition Report



Cooperating with the Georgia Department of Agriculture and the Cooperative Extension Service
 Southern Regional Field Office · 355 East Hancock Avenue, Suite 100 · Athens, GA 30601 · (706) 713-5400
www.nass.usda.gov

May 21, 2018

Media Contact: Jim Ewing

General

According to the National Agricultural Statistics Service in Georgia, there were 4.0 days suitable for fieldwork for the week ending Sunday, May 20, 2018. Precipitation estimates for the state ranged from no rain to 7.3 inches. Average high temperatures ranged from the high 80s to the low 70s. Average low temperatures ranged from the low 70s to the mid 50s.

County Comments

Two weeks of hay cutting weather followed by rain has stalled completion of first hay cutting. Overseeded hay fields with oats, wheat, or rye are now maturing and hay quality for the final stages of the first cutting will have lower quality.

Frank Hancock, Henry County

We finally got some rain, and it was a fair amount. Planting will be in full swing next week and we will see what the effects of the rain are next week. There may be field or two of unharvested onions, but not many. The tobacco looks good, especially after the rain. The livestock look great due the pastures now green instead of wilting.

Chris Earls, Treutlen County

Peanut and cotton planting have stopped due to wet conditions. Rain and wet conditions have started to affect wheat, oats, and rye. Some growers have not been able to make side dress fertilizer applications to corn.

Peyton Sapp, Burke County

Rain over the last week has made a challenge in herbicide applications in cotton and peanuts. Corn is progressing at a fast rate. Growers are trying to plant dryland fields if they received rain. Rain is making small grain harvest a challenge.

Jeremy Kichler, Colquitt County

Crop Progress for Week Ending 05/20/18

Crop stage	This week (percent)	Prev week (percent)	Prev year (percent)	5 Year avg (percent)
Blueberries - Harvested..	54	42	74	50
Corn - Emerged.....	97	94	99	NA
Corn - Silking	3	NA	4	NA
Cotton - Planted	56	41	57	52
Hay - 1st Cutting	64	50	65	64
Oats - Harvested.....	12	5	33	23
Onions - Harvested	85	71	95	83
Peaches - Harvested.....	8	3	13	10
Peanuts - Planted.....	65	49	69	59
Rye - Harvested	20	13	41	23
Soybeans - Planted.....	27	20	36	29
Soybeans - Emerged.....	12	4	17	NA
Winter wheat - Harvested	18	9	21	14

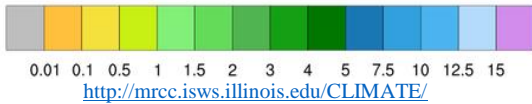
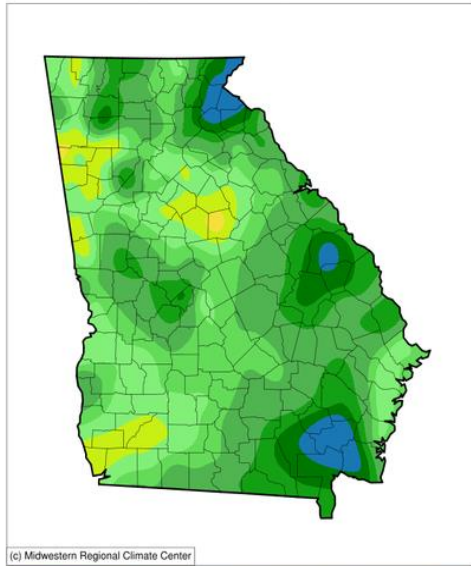
Conditions for Week Ending 05/20/18

Crop	Very poor (percent)	Poor (percent)	Fair (percent)	Good (percent)	Excellent (percent)
Blueberries.....	10	27	35	27	1
Cattle	0	3	22	63	12
Corn.....	0	3	26	59	12
Oats	1	7	36	49	7
Pasture and range.....	2	7	34	49	8
Peaches.....	4	10	26	49	11
Rye	0	4	38	53	5
Tobacco.....	1	3	29	51	16
Winter wheat	0	3	32	56	9

Soil Moisture for Week Ending 05/20/18

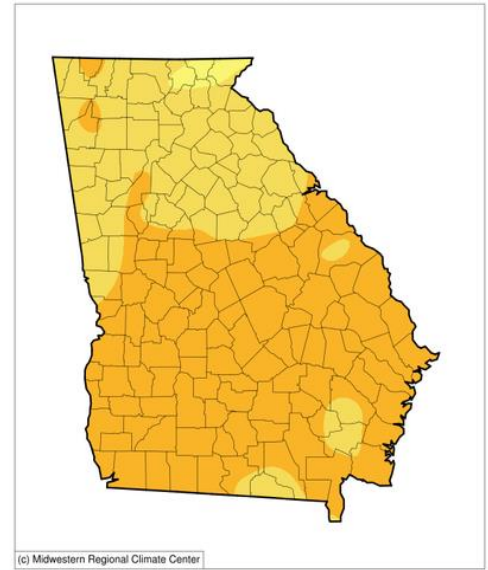
Topsoil	This week (percent)	Previous week (percent)	5 Year avg (percent)
Very short.....	3	27	7
Short.....	15	49	29
Adequate.....	68	23	55
Surplus.....	14	1	9
Subsoil	This week (percent)	Previous week (percent)	5 Year avg (percent)
Very short.....	2	9	4
Short.....	20	50	25
Adequate.....	70	41	64
Surplus.....	8	NA	7

Accumulated Precipitation (in)
May 14, 2018 to May 20, 2018



<http://mrcc.isws.illinois.edu/CLIMATE/>

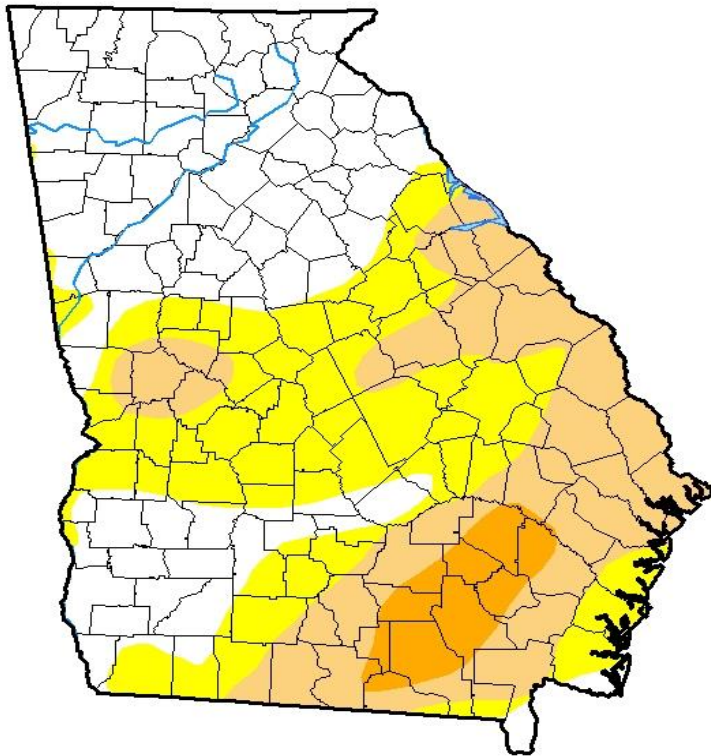
Average Temperature (°F)
May 14, 2018 to May 20, 2018



<http://mrcc.isws.illinois.edu/CLIMATE/>

U.S. Drought Monitor Georgia

May 15, 2018
(Released Thursday, May 17, 2018)
Valid 8 a.m. EDT



Drought Conditions (Percent Area)

	None	D0-D4	D1-D4	D2-D4	D3-D4	D4
Current	40.28	59.72	30.19	5.30	0.00	0.00
Last Week 05-08-2018	40.50	59.50	30.19	5.30	0.00	0.00
3 Months Ago 02-13-2018	29.13	70.87	23.24	0.00	0.00	0.00
Start of Calendar Year 01-02-2018	12.14	87.86	40.66	0.00	0.00	0.00
Start of Water Year 09-26-2017	100.00	0.00	0.00	0.00	0.00	0.00
One Year Ago 05-16-2017	11.83	88.17	54.01	23.19	7.21	0.00

Intensity:

- D0 Abnormally Dry
- D1 Moderate Drought
- D2 Severe Drought
- D3 Extreme Drought
- D4 Exceptional Drought

The Drought Monitor focuses on broad-scale conditions. Local conditions may vary. See accompanying text summary for forecast statements.

Author:

Eric Luebehusen
U.S. Department of Agriculture



<http://droughtmonitor.unl.edu/>