



**United States Department of Agriculture**  
**National Agricultural Statistics Service**  
**Georgia Crop Progress**  
**and Condition Report**



Cooperating with the Georgia Department of Agriculture and the Cooperative Extension Service  
 Southern Regional Field Office · 355 East Hancock Avenue, Suite 100 · Athens, GA 30601 · (706) 713-5400  
[www.nass.usda.gov](http://www.nass.usda.gov)

July 02, 2018

Media Contact: Jim Ewing

**General**

According to the National Agricultural Statistics Service in Georgia, there were 5.2 days suitable for fieldwork for the week ending Sunday, July 1, 2018. Precipitation estimates for the state ranged from trace amounts of rain to 5.5 inches. Average high temperatures ranged from the high 70s to the high 90s. Average low temperatures ranged from the low 60s to the mid 70s.

**County Comments**

Afternoon thunderstorms have brought heavy rain to some areas of the county. Some farmers are seeing a negative impact on corn crops due to wild pig populations.

**Joshua Presley, Hall County**

We received widespread rain throughout the county this week on 3 days. Some places received over 3 inches or better. Our oldest cotton is blooming, setting bolls, and has been topped. Our most mature corn is finished while a large majority is in the dough stage. Our oldest peanuts are pegging and putting on pods and land plaster is being put out. Our hay and cattle farmers were happy to see the rain as well. A lot of hay is being cut down and baled.

**Cole Moon, Bleckley County**

The cotton crop is progressing fast. Rain over the weekend has made weed control a challenge in cotton and peanuts. The corn crop is progressing fast. Hay production has been hampered by wet weather.

**Jeremy Kichler, Colquitt County**

Daily thunderstorms are keeping things wet. Small grower produce is suffering from diseases. Vineyards are steadily spraying when there are breaks in rainfall. Cattlemen with appropriate stocking rates have plenty of grass. All silage corn has been planted by now.

**Nathan Eason, White County**

**Crop Progress for Week Ending 07/01/18**

Crop stage	This week (percent)	Prev week (percent)	Prev year (percent)	5 Year avg (percent)
Blueberries - Harvested..	93	88	NA	NA
Corn - Silking .....	95	89	93	NA
Corn - Mature .....	2	0	NA	NA
Cotton - Squaring .....	58	42	55	56
Cotton - Setting Bolls.....	8	1	7	9
Hay - 2nd Cutting .....	17	0	NA	NA
Oats - Harvested .....	95	91	NA	NA
Peaches - Harvested.....	46	45	90	66
Peanuts - Pegging.....	61	38	54	37
Rye - Harvested .....	95	89	NA	NA
Soybeans - Planted.....	93	86	92	91
Soybeans - Emerged.....	84	75	84	NA
Soybeans - Blooming .....	12	3	14	NA
Tobacco - Topped .....	70	46	64	NA
Tobacco - Harvested.....	6	0	NA	NA
Winter wheat - Harvested	98	94	NA	NA

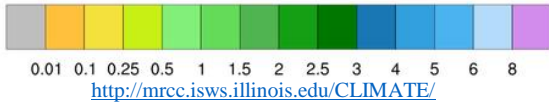
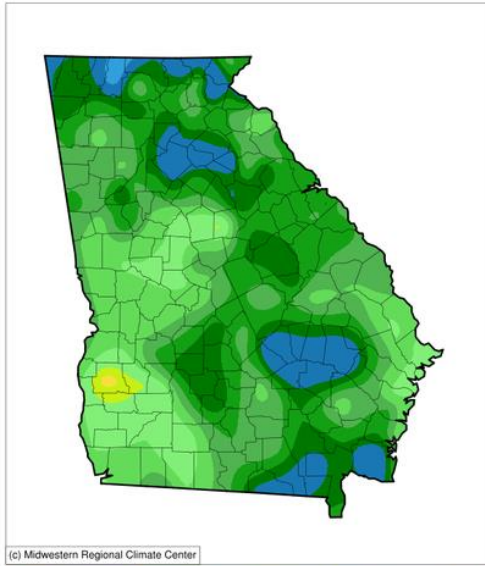
**Conditions for Week Ending 07/01/18**

Crop	Very poor (percent)	Poor (percent)	Fair (percent)	Good (percent)	Excellent (percent)
Cattle .....	0	2	22	63	13
Corn .....	0	3	20	64	13
Cotton .....	1	7	26	58	8
Pasture and range.....	1	4	26	57	12
Peaches.....	0	4	20	70	6
Peanuts.....	1	4	24	64	7
Soybeans.....	0	3	21	66	10
Tobacco .....	1	12	38	38	11

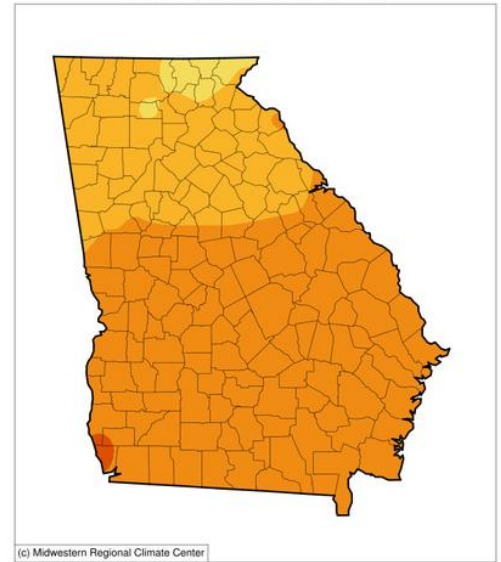
**Soil Moisture for Week Ending 07/01/18**

Topsoil	This week (percent)	Previous week (percent)	5 Year avg (percent)
Very short.....	1	1	NA
Short.....	12	25	NA
Adequate.....	71	69	NA
Surplus.....	16	5	NA
Subsoil	This week (percent)	Previous week (percent)	5 Year avg (percent)
Very short.....	0	0	NA
Short.....	10	17	NA
Adequate.....	75	78	NA
Surplus.....	15	5	NA

**Accumulated Precipitation (in)**  
June 25, 2018 to July 01, 2018

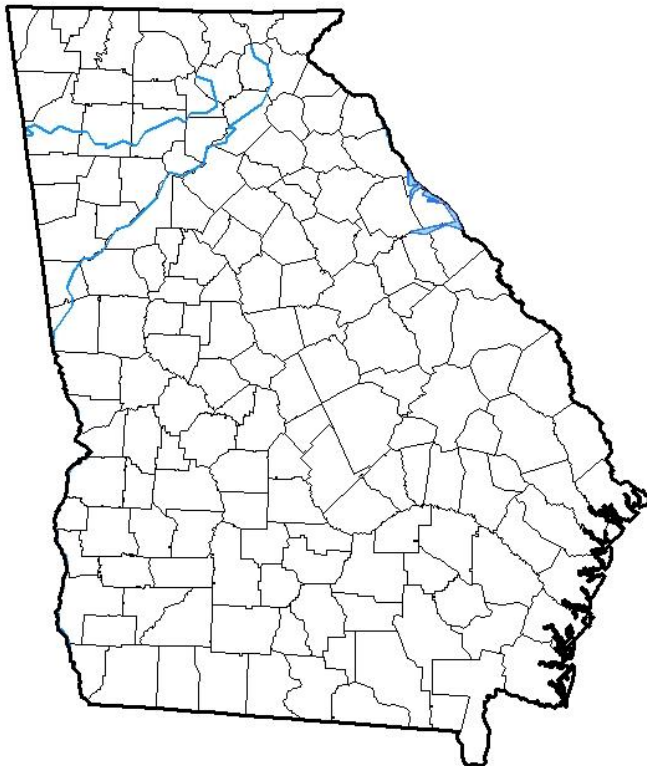


**Average Temperature (°F)**  
June 25, 2018 to July 01, 2018



## U.S. Drought Monitor Georgia

**June 26, 2018**  
(Released Thursday, Jun. 28, 2018)  
Valid 8 a.m. EDT



Drought Conditions (Percent Area)

	None	D0-D4	D1-D4	D2-D4	D3-D4	D4
<b>Current</b>	100.00	0.00	0.00	0.00	0.00	0.00
<b>Last Week</b> 06-19-2018	100.00	0.00	0.00	0.00	0.00	0.00
<b>3 Months Ago</b> 03-27-2018	31.15	68.85	50.54	10.42	0.00	0.00
<b>Start of Calendar Year</b> 01-02-2018	12.14	87.86	40.66	0.00	0.00	0.00
<b>Start of Water Year</b> 09-26-2017	100.00	0.00	0.00	0.00	0.00	0.00
<b>One Year Ago</b> 06-27-2017	75.85	24.15	0.19	0.00	0.00	0.00

**Intensity:**

- D0 Abnormally Dry
- D1 Moderate Drought
- D2 Severe Drought
- D3 Extreme Drought
- D4 Exceptional Drought

The Drought Monitor focuses on broad-scale conditions. Local conditions may vary. See accompanying text summary for forecast statements.

**Author:**

Richard Heim  
NCEI/NOAA



<http://droughtmonitor.unl.edu/>