



**United States Department of Agriculture**  
**National Agricultural Statistics Service**  
**Georgia Crop Progress**  
**and Condition Report**



Cooperating with the Georgia Department of Agriculture and the Cooperative Extension Service  
 Southern Regional Field Office · 355 East Hancock Avenue, Suite 100 · Athens, GA 30601 · (706) 713-5400  
[www.nass.usda.gov](http://www.nass.usda.gov)

July 9, 2018

Media Contact: Jim Ewing

**General**

According to the National Agricultural Statistics Service in Georgia, there were 5.3 days suitable for fieldwork for the week ending Sunday, July 8, 2018. Precipitation estimates for the state ranged from trace amounts of rain to 3.7 inches. Average high temperatures ranged from the high 70s to the low 90s. Average low temperatures ranged from the low 60s to the mid 70s.

**County Comments**

Rains continued across the county. Growers are spraying for weeds in crops. Peanuts blooming, pegging and setting pods. Corn is progressing well and haying continues.

**Raymond Joyce, Laurens County**

Many cotton fields that were planted either got washed out in spots due to heavy rains or have been under severe deer pressure. The fields that did not get too much rain during planting have emerged very well and are doing great with no thrips pressure earlier this year. Overall the cotton crop looks great.

**Ben Cantrell, Effingham County**

Cotton is really improving after the trouble we had planting. Corn went way downhill however because rains shut off during peak moisture demands. Peanuts have also improved this week and most fields that were not planted super late are pegging.

**Seth McAllister, Terrell County**

Bermudagrass stem maggot was identified in northern Heard County this week.

**Paula Burke, Carroll County**

**Crop Progress for Week Ending 07/08/18**

Crop stage	This week	Prev week	Prev year	5 Year avg
	(percent)	(percent)	(percent)	(percent)
Blueberries - Harvested..	97	93	NA	NA
Corn - Mature.....	14	2	16	NA
Cotton - Squaring.....	70	58	67	69
Cotton - Setting Bolls.....	21	8	18	22
Hay - 2nd Cutting.....	44	17	33	51
Peaches - Harvested.....	53	46	94	73
Peanuts - Pegging.....	74	61	71	55
Soybeans - Planted.....	95	93	96	94
Soybeans - Emerged.....	90	84	90	NA
Soybeans - Blooming.....	23	12	27	NA
Tobacco - Topped.....	83	70	83	NA
Tobacco - Harvested.....	15	6	10	7

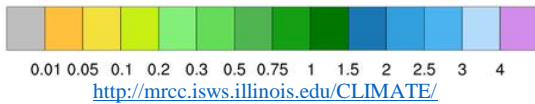
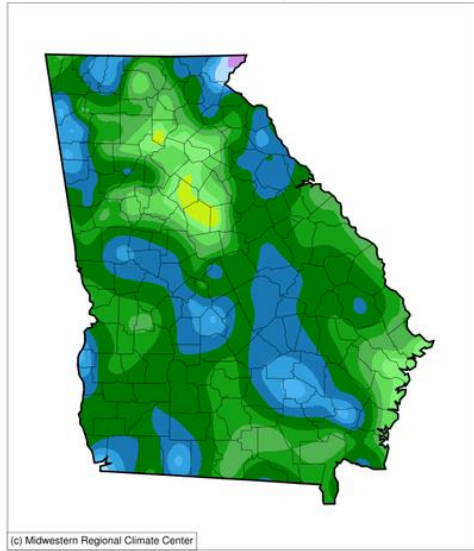
**Conditions for Week Ending 07/08/18**

Crop	Very poor	Poor	Fair	Good	Excellent
	(percent)	(percent)	(percent)	(percent)	(percent)
Cattle.....	0	2	22	62	14
Corn.....	1	4	20	61	14
Cotton.....	1	6	24	60	9
Pasture and range.....	1	4	26	57	12
Peaches.....	0	4	20	64	12
Peanuts.....	1	4	24	62	9
Soybeans.....	0	4	26	60	10
Tobacco.....	1	17	33	36	13

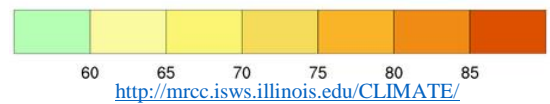
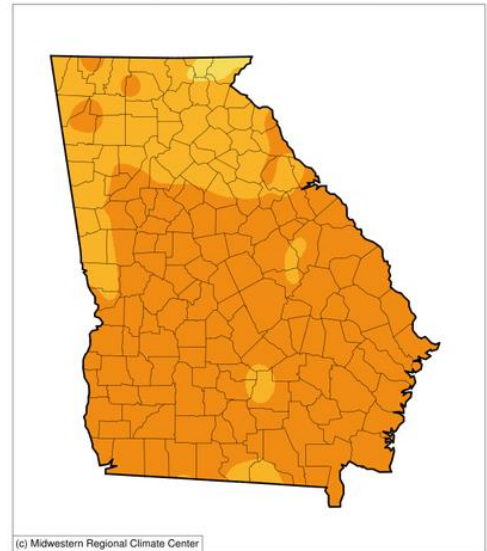
**Soil Moisture for Week Ending 07/08/18**

Topsoil	This week	Previous week	5 Year avg
	(percent)	(percent)	(percent)
Very short.....	1	1	NA
Short.....	14	12	NA
Adequate.....	76	71	NA
Surplus.....	9	16	NA
Subsoil	This week	Previous week	5 Year avg
	(percent)	(percent)	(percent)
Very short.....	0	0	NA
Short.....	12	10	NA
Adequate.....	80	75	NA
Surplus.....	8	15	NA

**Accumulated Precipitation (in)**  
July 02, 2018 to July 08, 2018

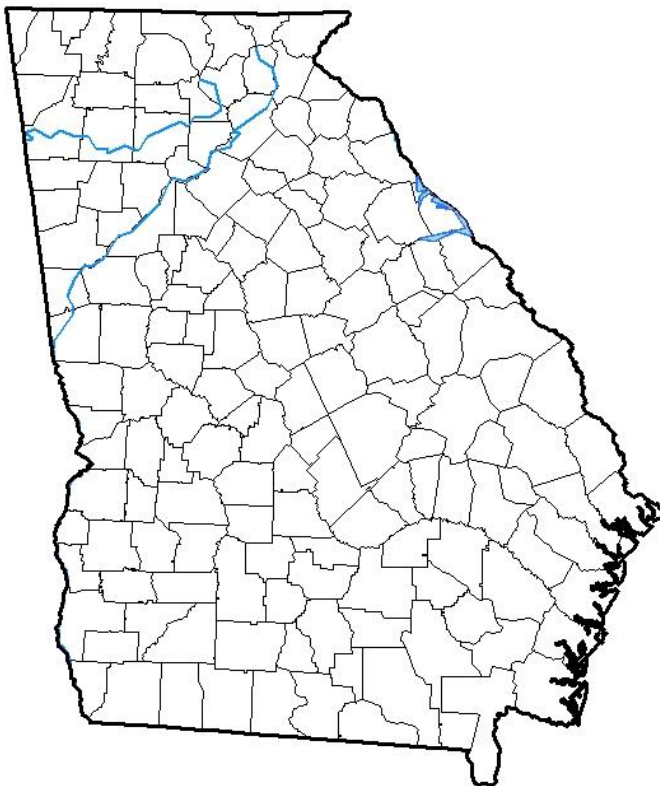


**Average Temperature (°F)**  
July 02, 2018 to July 08, 2018



## U.S. Drought Monitor Georgia

**July 3, 2018**  
(Released Thursday, Jul. 5, 2018)  
Valid 8 a.m. EDT



*Drought Conditions (Percent Area)*

	None	D0-D4	D1-D4	D2-D4	D3-D4	D4
<b>Current</b>	100.00	0.00	0.00	0.00	0.00	0.00
<b>Last Week</b> 06-26-2018	100.00	0.00	0.00	0.00	0.00	0.00
<b>3 Months Ago</b> 04-03-2018	31.27	68.73	51.19	16.00	0.00	0.00
<b>Start of Calendar Year</b> 01-02-2018	12.14	87.86	40.66	0.00	0.00	0.00
<b>Start of Water Year</b> 09-26-2017	100.00	0.00	0.00	0.00	0.00	0.00
<b>One Year Ago</b> 07-04-2017	98.97	1.03	0.00	0.00	0.00	0.00

**Intensity:**

- D0 Abnormally Dry
- D1 Moderate Drought
- D2 Severe Drought
- D3 Extreme Drought
- D4 Exceptional Drought

*The Drought Monitor focuses on broad-scale conditions. Local conditions may vary. See accompanying text summary for forecast statements.*

**Author:**

Richard Tinker  
CPC/NOAA/NWS/NCEP



<http://droughtmonitor.unl.edu/>