



**United States Department of Agriculture**  
**National Agricultural Statistics Service**  
**Georgia Crop Progress**  
**and Condition Report**



Cooperating with the Georgia Department of Agriculture and the Cooperative Extension Service  
 Southern Regional Field Office · 355 East Hancock Avenue, Suite 100 · Athens, GA 30601 · (706) 713-5400  
[www.nass.usda.gov](http://www.nass.usda.gov)

September 24, 2018

Media Contact: Jim Ewing

**General**

According to the National Agricultural Statistics Service in Georgia, there were 6.6 days suitable for fieldwork for the week ending Sunday, September 23, 2018. Precipitation estimates for the state ranged from no rain to 1.6 inches. Average high temperatures ranged from the low 70s to the mid 90s. Average low temperatures ranged from the low 60s to the high 70s.

**County Comments**

Soil moisture conditions continued to worsen. We started seeing some dryland peanuts separate from the shell, which means there is not enough moisture within the plant to sustain all of the peanuts. Dryland cotton dropped much of the small fruit in the top; this will lessen the time until harvest. Pastures really dried back, so some farmers started to feed hay early.

**Jason E. Mallard, Jenkins County**

Peanut harvest began this week across the county. Cotton bolls continued to open. Producers sprayed some cotton fields with defoliant. Producers harvested group 5 soybeans. Fields with irrigation were watered during the week. Pastures and hayfields dried up from the lack of rainfall. Cattlemen began to feed hay because of the poor condition of pastures. Rain is needed!

**Raymond Joyce, Laurens County**

Peanut harvest was well underway. The initial grades were very good, but the dry spell started giving us trouble. Some ground was too hard to dig peanuts, and many fields that looked great a week ago have since crashed. Cotton defoliation was well underway. The early crop was a bumper one, but the late-planted fields were struggling at best. Soybeans set a very heavy load, but ran out of moisture during pod fill. Therefore, the vines look impressive, but yield may not be. We could all use a good rain and then some more sun for harvest.

**Seth McAllister, Terrell County**

**Crop Progress for Week Ending 09/23/18**

Crop stage	This week (percent)	Prev week (percent)	Prev year (percent)	5 Year avg (percent)
Corn - Harvested.....	95	92	97	95
Cotton - Bolls Opening ...	69	55	76	76
Cotton - Harvested.....	2	1	5	4
Hay - 3rd Cutting.....	86	79	70	NA
Oats - Planted.....	1	NA	1	5
Peanuts - Dug.....	22	9	23	19
Peanuts - Harvested.....	11	3	12	10
Rye - Planted.....	1	NA	3	4
Soybeans - Dropping				
Leaves.....	44	32	38	NA
Soybeans - Harvested....	5	NA	3	4

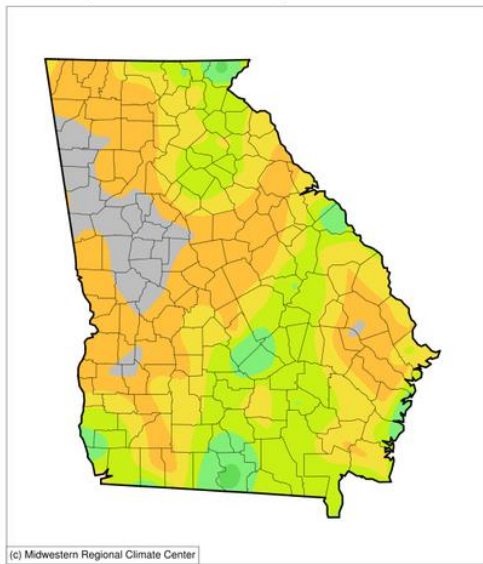
**Conditions for Week Ending 09/23/18**

Crop	Very poor (percent)	Poor (percent)	Fair (percent)	Good (percent)	Excellent (percent)
Cattle.....	0	3	28	59	10
Cotton.....	0	9	30	49	12
Pasture and range.....	2	13	36	45	4
Peanuts.....	1	6	19	59	15
Pecans.....	1	4	14	59	22
Soybeans.....	1	7	28	56	8

**Soil Moisture for Week Ending 09/23/18**

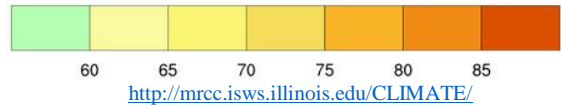
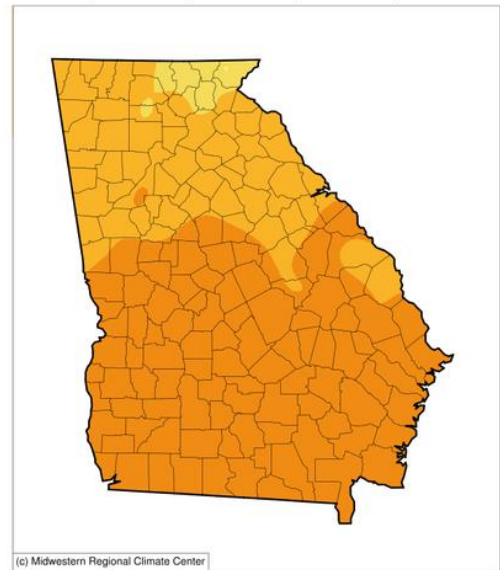
Topsoil	This week (percent)	Previous week (percent)	5 Year avg (percent)
Very short.....	16	9	NA
Short.....	45	36	NA
Adequate.....	38	53	NA
Surplus.....	1	2	NA
Subsoil	This week (percent)	Previous week (percent)	5 Year avg (percent)
Very short.....	12	6	NA
Short.....	39	30	NA
Adequate.....	48	62	NA
Surplus.....	1	2	NA

**Accumulated Precipitation (in)**  
September 17, 2018 to September 23, 2018



<http://mrcc.isws.illinois.edu/CLIMATE/>

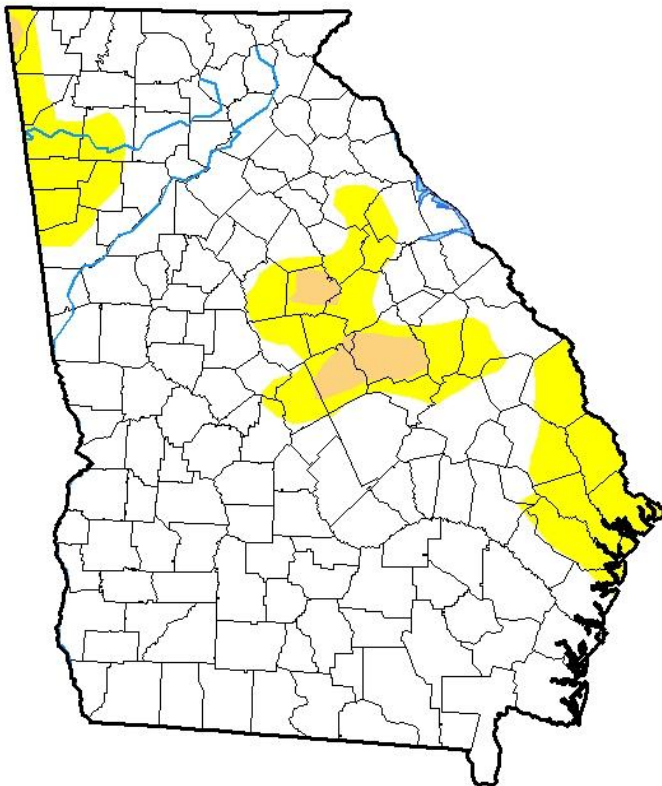
**Average Temperature (°F)**  
September 17, 2018 to September 23, 2018



<http://mrcc.isws.illinois.edu/CLIMATE/>

## U.S. Drought Monitor Georgia

**September 18, 2018**  
(Released Thursday, Sep. 20, 2018)  
Valid 8 a.m. EDT



*Drought Conditions (Percent Area)*

	None	D0-D4	D1-D4	D2-D4	D3-D4	D4
<b>Current</b>	82.71	17.29	1.90	0.00	0.00	0.00
<b>Last Week</b> 09-11-2018	93.01	6.99	0.00	0.00	0.00	0.00
<b>3 Months Ago</b> 06-19-2018	100.00	0.00	0.00	0.00	0.00	0.00
<b>Start of Calendar Year</b> 01-02-2018	12.14	87.86	40.66	0.00	0.00	0.00
<b>Start of Water Year</b> 09-26-2017	100.00	0.00	0.00	0.00	0.00	0.00
<b>One Year Ago</b> 09-19-2017	100.00	0.00	0.00	0.00	0.00	0.00

**Intensity:**

- D0 Abnormally Dry
- D1 Moderate Drought
- D2 Severe Drought
- D3 Extreme Drought
- D4 Exceptional Drought

*The Drought Monitor focuses on broad-scale conditions. Local conditions may vary. See accompanying text summary for forecast statements.*

**Author:**

Jessica Blunden  
NCEI/NOAA



<http://droughtmonitor.unl.edu/>