



United States Department of Agriculture
National Agricultural Statistics Service
**Georgia Crop Progress
and Condition Report**



Cooperating with the Georgia Department of Agriculture and the Cooperative Extension Service
Southern Regional Field Office · 355 East Hancock Avenue, Suite 100 · Athens, GA 30601 · (706) 713-5400
www.nass.usda.gov

October 22, 2018

Media Contact: Jim Ewing

General

According to the National Agricultural Statistics Service in Georgia, there were 5.5 days suitable for fieldwork for the week ending Sunday, October 21, 2018. Precipitation estimates for the state ranged from no rain to 1.6 inches. Average high temperatures ranged from the mid 60s to the low 90s. Average low temperatures ranged from the mid 40s to the low 70s.

County Comments

The cotton harvest was underway. Yields were definitely reduced by the hurricane, but we are still uncertain of the total effect. The peanut harvest resumed, but the delay from the storm caused some reduction in yield and quality.

Brent Allen, Washington County

Damage from Hurricane Michael was still being assessed, but early estimates were that we lost half of the cotton and pecan crops in Pulaski County. Cotton plants were intertwined from the high winds, making the remaining cotton difficult to harvest.

Jay Porter, Pulaski County

Hurricane Michael blew excessive amounts of cotton from plants. Some soybean fields were blown to the ground. The hurricane did some damage to dug peanuts, and rain on Monday further delayed peanut digging. Pecan groves suffered extensive damage such that growers cannot harvest their crop at this time. Costly and time-consuming work will be required to clear downed trees and limbs before the crop can be harvested.

Doug Collins, Lee County

Hurricane Michael was a terrible weather event. Over half of the county's poultry houses were destroyed. Most of the cotton and pecan crops were destroyed.

E. Lanier Jordan, Baker County

Crop Progress for Week Ending 10/21/18

Crop stage	This week (percent)	Prev week (percent)	Prev year (percent)	5 Year avg (percent)
Cotton - Bolls Opening ...	95	92	97	95
Cotton - Harvested	29	20	36	31
Oats - Planted	22	13	34	33
Peanuts - Dug	79	67	79	74
Peanuts - Harvested	63	51	65	58
Pecans - Harvested	11	5	17	14
Rye - Planted	21	14	38	35
Soybeans - Dropping Leaves	91	85	86	NA
Soybeans - Harvested ...	32	25	37	29
Winter wheat - Planted ...	6	2	14	12

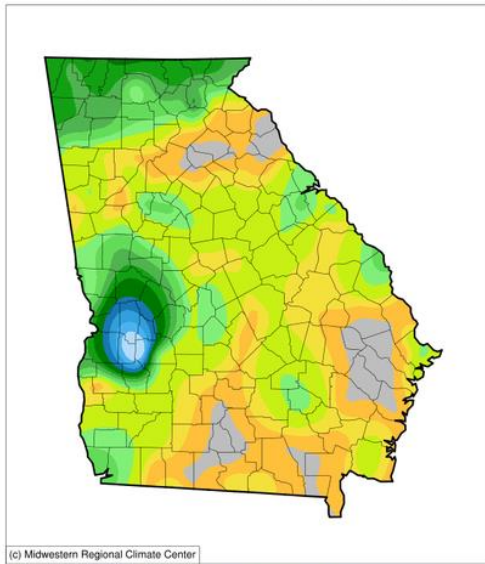
Conditions for Week Ending 10/21/18

Crop	Very poor (percent)	Poor (percent)	Fair (percent)	Good (percent)	Excellent (percent)
Cattle	0	3	29	59	9
Cotton	27	22	35	14	2
Pasture and range	3	11	37	46	3
Pecans	26	20	28	24	2
Soybeans	5	14	34	44	3

Soil Moisture for Week Ending 10/21/18

Topsoil	This week (percent)	Previous week (percent)	5 Year avg (percent)
Very short	2	1	NA
Short	17	12	NA
Adequate	77	72	NA
Surplus	4	15	NA
Subsoil	This week (percent)	Previous week (percent)	5 Year avg (percent)
Very short	3	3	NA
Short	20	18	NA
Adequate	73	70	NA
Surplus	4	9	NA

Accumulated Precipitation (in)
October 15, 2018 to October 21, 2018



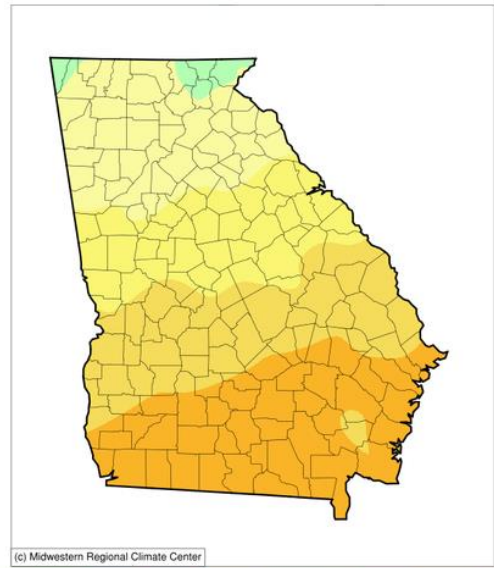
(c) Midwestern Regional Climate Center



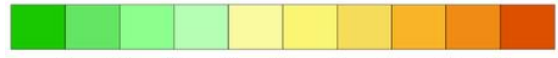
0.01 0.05 0.1 0.2 0.3 0.5 0.75 1 1.5 2 2.5 3 4

<http://mrcc.isws.illinois.edu/CLIMATE/>

Average Temperature (°F)
October 15, 2018 to October 21, 2018



(c) Midwestern Regional Climate Center

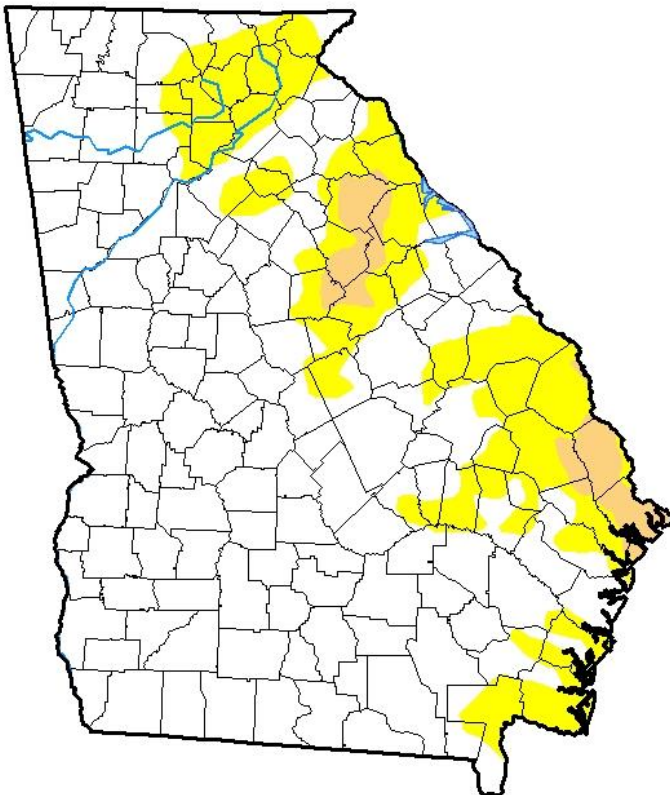


45 50 55 60 65 70 75 80 85

<http://mrcc.isws.illinois.edu/CLIMATE/>

U.S. Drought Monitor Georgia

October 16, 2018
(Released Thursday, Oct. 18, 2018)
Valid 8 a.m. EDT



Drought Conditions (Percent Area)

	None	D0-D4	D1-D4	D2-D4	D3-D4	D4
Current	76.18	23.82	3.58	0.00	0.00	0.00
Last Week 10-09-2018	42.59	57.41	8.27	0.00	0.00	0.00
3 Months Ago 07-17-2018	100.00	0.00	0.00	0.00	0.00	0.00
Start of Calendar Year 01-02-2018	12.14	87.86	40.66	0.00	0.00	0.00
Start of Water Year 09-25-2018	70.95	29.05	6.72	0.00	0.00	0.00
One Year Ago 10-17-2017	74.94	25.06	0.00	0.00	0.00	0.00

Intensity:

- D0 Abnormally Dry
- D1 Moderate Drought
- D2 Severe Drought
- D3 Extreme Drought
- D4 Exceptional Drought

The Drought Monitor focuses on broad-scale conditions. Local conditions may vary. See accompanying text summary for forecast statements.

Author:

Eric Luebehusen
U.S. Department of Agriculture



<http://droughtmonitor.unl.edu/>