



United States Department of Agriculture
National Agricultural Statistics Service
**Georgia Crop Progress
and Condition Report**



Cooperating with the Georgia Department of Agriculture and the Cooperative Extension Service
Southern Regional Field Office · 355 East Hancock Avenue, Suite 100 · Athens, GA 30601 · (706) 713-5400
www.nass.usda.gov

November 26, 2018

Media Contact: Jim Ewing

General

According to the National Agricultural Statistics Service in Georgia, there were 4.4 days suitable for fieldwork for the week ending Sunday, November 25, 2018. Precipitation estimates for the state ranged from no rain to 3.5 inches. Average high temperatures ranged from the low 50s to the low 70s. Average low temperatures ranged from the high 20s to the mid 50s.

County Comments

The weather only slightly improved this week, allowing soybean harvesting to continue. Small grains planting continued when possible. Livestock were in great shape. Grazing was available in parts of the county, but hay was out as well. Calving continued.

Wade Hutcheson, Walker County

The cotton harvest has been quite a challenge with the wet weather. Pickers were bogging down and not able to get a lot done. The peanut harvest was done, except for a couple of fields. Some soybean growers were able to resume harvesting. Producers began planting winter wheat, but have not gotten much done.

Cole Moon, Bleckley County

With the rain subsiding, farmers were able to finish harvesting pecans and planting their fields. The pecan crop looked rather poor as a result of early dropping from the high winds of Hurricane Michael and the prolonged rain events which delayed harvest by three weeks.

Charlie Todd, Jasper County

Conditions have remained wet for several weeks. Cotton, peanut, and soybean harvests have been way behind. Due to wet conditions, we have continued to see additional yield loss and declining quality.

Peyton Sapp, Burke County

Several weeks of wet weather with little sunshine significantly delayed the cotton harvest. Some growers have not been able to plant grazing. Established grazing was not in great condition because of saturated soils.

Will Gay, Turner County

Crop Progress for Week Ending 11/25/18

Crop stage	This week (percent)	Prev week (percent)	Prev year (percent)	5 Year avg (percent)
Cotton - Harvested.....	72	65	83	81
Oats - Planted.....	63	53	83	78
Onions - Transplanted....	34	24	35	42
Peanuts - Harvested.....	93	89	99	97
Pecans - Harvested.....	59	45	72	63
Rye - Planted.....	68	61	77	75
Soybeans - Harvested....	75	67	88	83
Winter wheat - Planted...	43	29	61	53
Winter wheat - Emerged.	25	16	37	NA

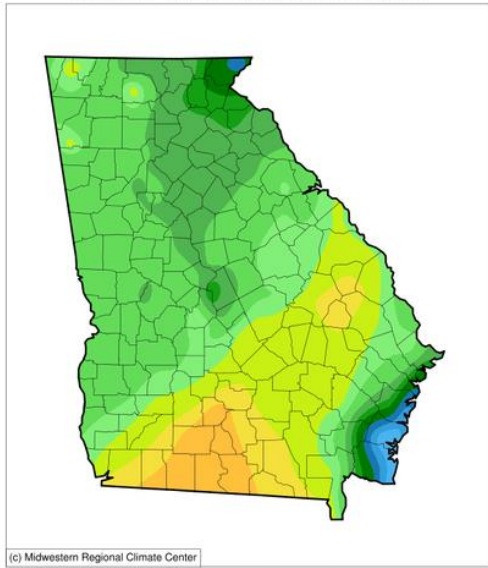
Conditions for Week Ending 11/25/18

Crop	Very poor (percent)	Poor (percent)	Fair (percent)	Good (percent)	Excellent (percent)
Cattle.....	0	4	29	57	10
Oats.....	1	8	45	39	7
Pasture and range.....	3	8	41	44	4
Pecans.....	27	19	26	27	1
Rye.....	1	6	43	46	4

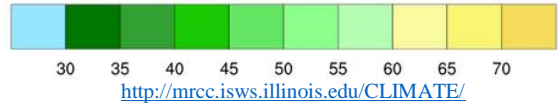
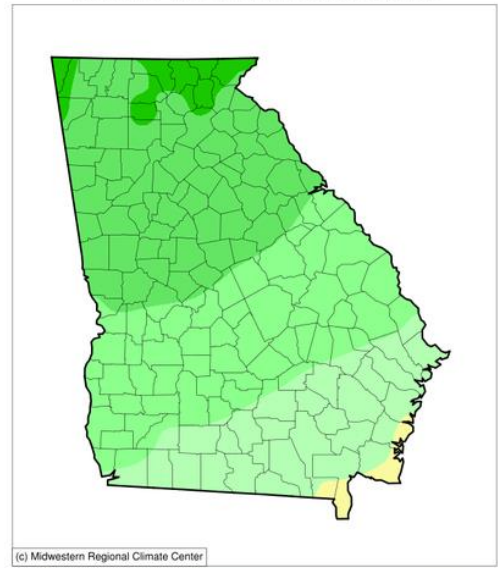
Soil Moisture for Week Ending 11/25/18

Topsoil	This week (percent)	Previous week (percent)	5 Year avg (percent)
Very short.....	0	0	NA
Short.....	5	6	NA
Adequate.....	68	57	NA
Surplus.....	27	37	NA
Subsoil	This week (percent)	Previous week (percent)	5 Year avg (percent)
Very short.....	1	1	NA
Short.....	9	8	NA
Adequate.....	75	66	NA
Surplus.....	15	25	NA

Accumulated Precipitation (in)
November 19, 2018 to November 25, 2018

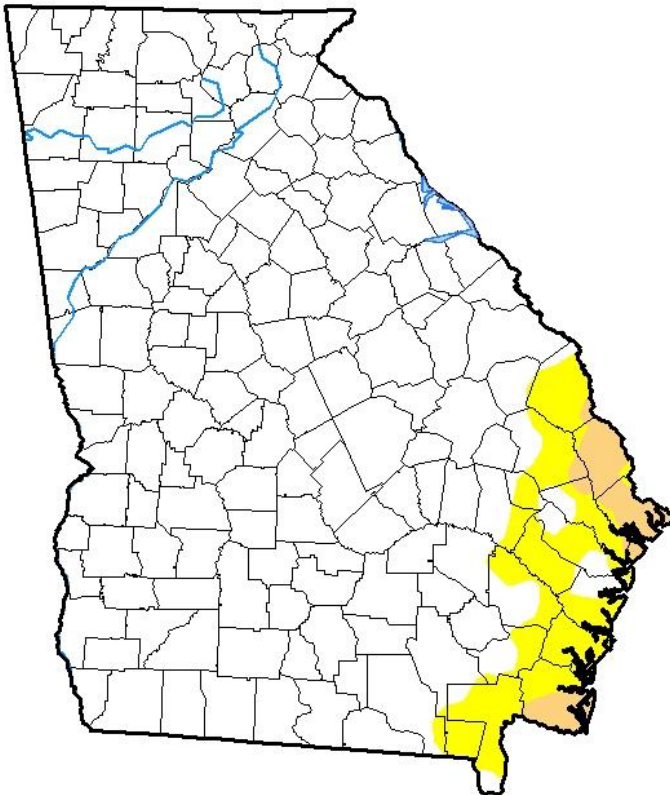


Average Temperature (°F)
November 19, 2018 to November 25, 2018



U.S. Drought Monitor Georgia

November 20, 2018
(Released Wednesday, Nov. 21, 2018)
Valid 7 a.m. EST



Drought Conditions (Percent Area)

	None	D0-D4	D1-D4	D2-D4	D3-D4	D4
Current	89.60	10.40	2.29	0.00	0.00	0.00
Last Week 11-13-2018	85.47	14.53	3.37	0.00	0.00	0.00
3 Months Ago 08-21-2018	100.00	0.00	0.00	0.00	0.00	0.00
Start of Calendar Year 01-02-2018	12.14	87.86	40.66	0.00	0.00	0.00
Start of Water Year 09-25-2018	70.95	29.05	6.72	0.00	0.00	0.00
One Year Ago 11-21-2017	33.13	66.87	11.20	0.00	0.00	0.00

Intensity:

- D0 Abnormally Dry
- D1 Moderate Drought
- D2 Severe Drought
- D3 Extreme Drought
- D4 Exceptional Drought

The Drought Monitor focuses on broad-scale conditions. Local conditions may vary. See accompanying text summary for forecast statements.

Author:

Richard Heim
NCEI/NOAA



<http://droughtmonitor.unl.edu/>