



United States Department of Agriculture
National Agricultural Statistics Service
**Georgia Crop Progress
and Condition Report**



Cooperating with the Georgia Department of Agriculture and the Cooperative Extension Service
Southern Regional Field Office · 355 East Hancock Avenue, Suite 100 · Athens, GA 30601 · (706) 713-5400
www.nass.usda.gov

May 6, 2019

Media Contact: Jacqueline Moore

General

According to the National Agricultural Statistics Service in Georgia, there were 6.3 days suitable for fieldwork for the week ending Sunday, May 5, 2019. Precipitation estimates for the state ranged from no rain to 2.63 inches. Average high temperatures ranged from the mid 70s to the low 90s. Average low temperatures ranged from the low 50s to the low 70s.

County Comments

Growers experienced more dry conditions this week, but some much needed rainfall came late in the week. Growers continued to plant cotton, peanuts, and some soybeans. Planted crops began emerging. Growers did see some buggy whipping in corn fields. Fertilizer was applied to pastures and hayfields. Some hay was cut.

Raymond Joyce, Laurens County

Recent light rain showers allowed for continued row crop planting and helped to maintain pasture and range productions at low levels.

Ray Hicks, Screven County

Cotton and peanut planting began to pick up. Warmer temperatures and dry weather resulted in a lot of center pivot irrigation being run on corn.

Luke Crosson, Calhoun County

Temperatures were unseasonably warm and we had some windy conditions that dried our soil down rapidly. Some parts of the county received rainfall late in the week, but not everywhere. Most corn fields completed herbicide applications and were side-dressed with nitrogen for the final time, unless it will be put out with a pivot. Corn looks very good and has impressive yield potential, if the weather remains favorable. Cotton started to slowly emerge, and many peanut fields were cracking.

Seth McAllister, Terrell County

Crop Progress for Week Ending 05/05/19

Crop stage	This week (percent)	Prev week (percent)	Prev year (percent)	5 Year avg (percent)
Blueberries - Harvested..	49	41	32	25
Corn - Planted.....	96	94	95	94
Corn - Emerged.....	93	89	89	93
Cotton - Planted.....	23	12	19	15
Hay - 1st Cutting.....	45	21	34	35
Oats - Harvested.....	2	NA	3	3
Onions - Harvested.....	56	40	48	50
Peanuts - Planted.....	27	9	22	20
Soybeans - Planted.....	12	3	10	8
Tobacco - Transplanted..	89	85	97	94
Winter wheat - Headed...	95	93	97	96
Winter wheat - Harvested	1	NA	4	3

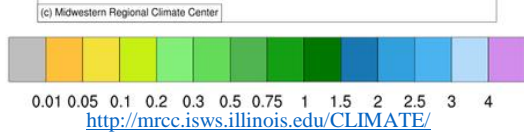
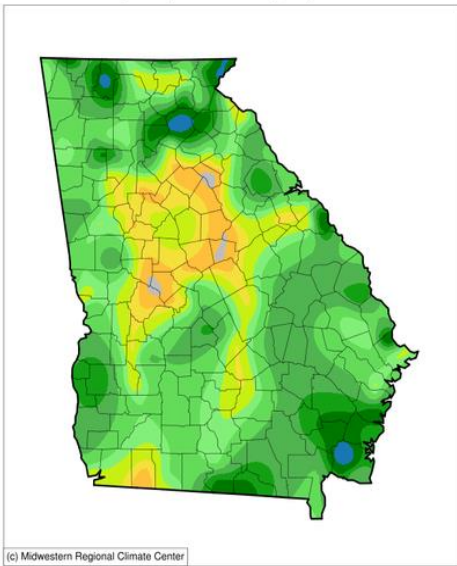
Conditions for Week Ending 05/05/19

Crop	Very poor (percent)	Poor (percent)	Fair (percent)	Good (percent)	Excellent (percent)
Blueberries.....	0	2	16	67	15
Cattle.....	1	4	21	62	12
Corn.....	0	1	18	67	14
Oats.....	0	4	37	57	2
Onions.....	0	5	39	53	3
Pasture and range.....	2	7	29	54	8
Peaches.....	0	0	3	42	55
Tobacco.....	0	1	28	68	3
Winter wheat.....	0	4	30	60	6

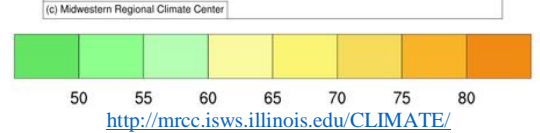
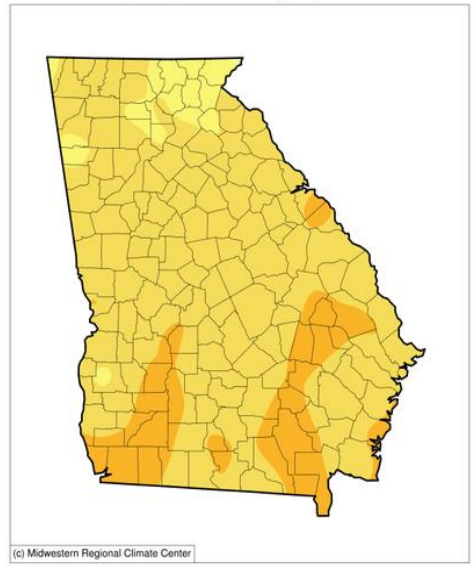
Soil Moisture for Week Ending 05/05/19

Topsoil	This week (percent)	Previous week (percent)
Very short.....	5	1
Short.....	28	21
Adequate.....	62	71
Surplus.....	5	7
Subsoil	This week (percent)	Previous week (percent)
Very short.....	1	0
Short.....	18	13
Adequate.....	77	81
Surplus.....	4	6

Accumulated Precipitation (in)
April 29, 2019 to May 05, 2019

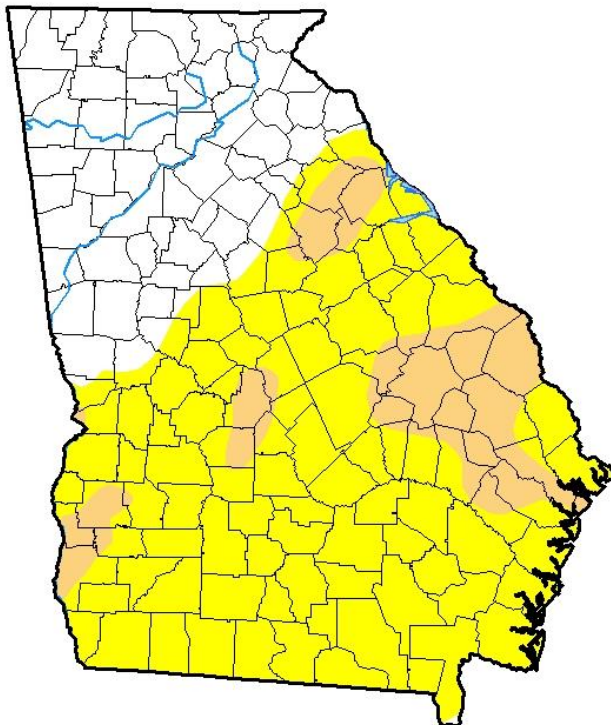


Average Temperature (°F)
April 29, 2019 to May 05, 2019



U.S. Drought Monitor Georgia

April 30, 2019
(Released Thursday, May 2, 2019)
Valid 8 a.m. EDT



Drought Conditions (Percent Area)

	None	D0-D4	D1-D4	D2-D4	D3-D4	D4
Current	29.58	70.42	13.09	0.00	0.00	0.00
Last Week 04-23-2019	30.57	69.43	7.86	0.00	0.00	0.00
3 Months Ago 01-29-2019	100.00	0.00	0.00	0.00	0.00	0.00
Start of Calendar Year 01-01-2019	100.00	0.00	0.00	0.00	0.00	0.00
Start of Water Year 09-25-2018	70.95	29.05	6.72	0.00	0.00	0.00
One Year Ago 05-01-2018	42.46	57.54	28.48	5.30	0.00	0.00

Intensity:

- D0 Abnormally Dry
- D1 Moderate Drought
- D2 Severe Drought
- D3 Extreme Drought
- D4 Exceptional Drought

The Drought Monitor focuses on broad-scale conditions. Local conditions may vary. See accompanying text summary for forecast statements.

Author:

Brad Rippey
U.S. Department of Agriculture



<http://droughtmonitor.unl.edu/>