



**United States Department of Agriculture**  
**National Agricultural Statistics Service**  
**Georgia Crop Progress**  
**and Condition Report**



Cooperating with the Georgia Department of Agriculture and the Cooperative Extension Service  
 Southern Regional Field Office · 355 East Hancock Avenue, Suite 100 · Athens, GA 30601 · (706) 713-5400  
[www.nass.usda.gov](http://www.nass.usda.gov)

June 10, 2019

Media Contact: Jacqueline Moore

**General**

According to the National Agricultural Statistics Service in Georgia, there were 5.3 days suitable for fieldwork for the week ending Sunday, June 9, 2019. Precipitation estimates for the state ranged from 0.52 inches of rain to 7.11 inches. Average high temperatures ranged from the low 70s to the mid 90s. Average low temperatures ranged from the low 60s to the mid 70s.

**County Comments**

Rains came toward the end of the week. Rain amounts varied throughout the county. Growers applied herbicides to cotton and peanuts. Nitrogen was being applied through pivots. Irrigation pivots worked overtime to keep moisture in the fields. Growers still have soybean fields to plant. Everyone was thankful for the rain!

**Raymond Joyce, Laurens County**

Rain moved in Friday and we were glad to see it. The rain was much needed on dryland crops and will replenish soil moisture so that we can finish planting dryland acres. The hot, dry weather over the last few weeks was more than dryland corn could handle and the rain was a little too late for it. However, most of our other crops are young and have not started flowering and reproducing, so they can do without much rain for now. Pastures will now green back up and hopefully farmers can get another good cutting of hay.

**Cole Moon, Bleckley County**

We received much needed rain which helped rejuvenate pasture and field corn growth. Producers with grazing herds were the most relieved, as forage grasses were providing very little productivity and nutritive value.

**Thad Glenn, Stephens County**

**Crop Progress for Week Ending 06/09/19**

Crop stage	This week (percent)	Prev week (percent)	Prev year (percent)	5 Year avg (percent)
Blueberries - Harvested..	83	80	74	72
Corn - Silking .....	70	49	57	NA
Cotton - Planted .....	90	84	84	90
Cotton - Squaring .....	16	6	16	12
Hay - 1st Cutting .....	95	91	85	90
Oats - Harvested .....	88	79	51	71
Peaches - Harvested .....	30	25	34	35
Peanuts - Planted .....	94	90	88	94
Peanuts - Pegging .....	4	NA	6	3
Soybeans - Planted .....	77	67	55	66
Soybeans - Emerged .....	66	55	38	50
Tobacco - Topped .....	10	1	9	6
Winter wheat - Harvested	92	77	63	69

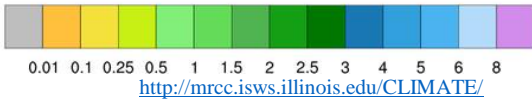
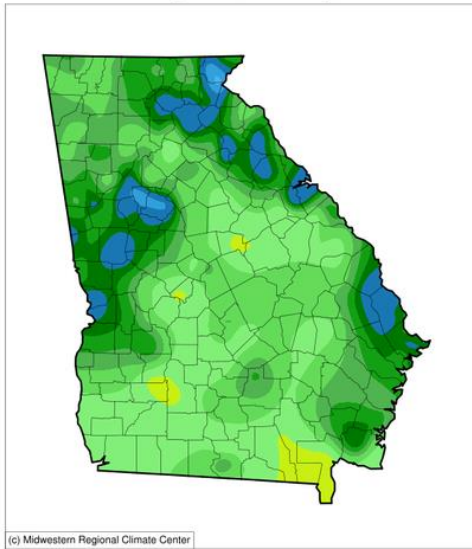
**Conditions for Week Ending 06/09/19**

Crop	Very poor (percent)	Poor (percent)	Fair (percent)	Good (percent)	Excellent (percent)
Cattle .....	1	6	34	53	6
Corn .....	6	13	30	41	10
Cotton .....	3	12	32	49	4
Pasture and range .....	5	26	41	26	2
Peaches .....	0	0	6	41	53
Peanuts .....	2	8	31	56	3
Soybeans .....	2	10	57	30	1
Tobacco .....	2	12	41	42	3

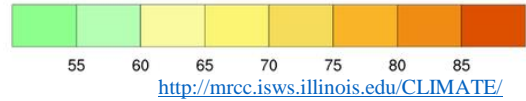
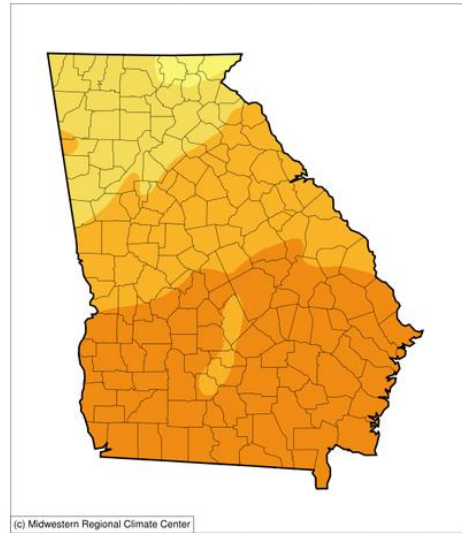
**Soil Moisture for Week Ending 06/09/19**

Topsoil	This week (percent)	Previous week (percent)
Very short .....	19	53
Short .....	36	35
Adequate .....	41	12
Surplus .....	4	0
Subsoil	This week (percent)	Previous week (percent)
Very short .....	12	27
Short .....	40	45
Adequate .....	47	28
Surplus .....	1	0

**Accumulated Precipitation (in)**  
June 03, 2019 to June 09, 2019

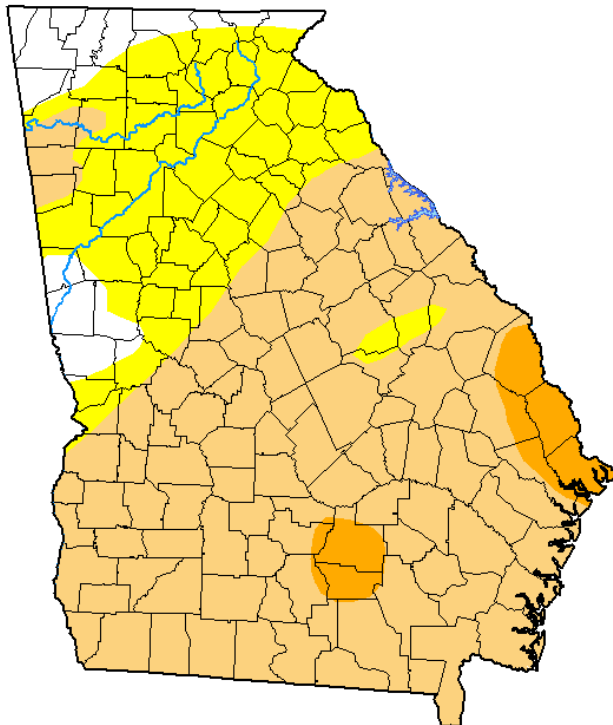


**Average Temperature (°F)**  
June 03, 2019 to June 09, 2019



## U.S. Drought Monitor Georgia

**June 4, 2019**  
(Released Thursday, Jun. 6, 2019)  
Valid 8 a.m. EDT



Drought Conditions (Percent Area)

	None	D0-D4	D1-D4	D2-D4	D3-D4	D4
<b>Current</b>	6.97	93.03	69.06	5.04	0.00	0.00
<b>Last Week</b> 05-28-2019	7.43	92.57	30.18	0.00	0.00	0.00
<b>3 Months Ago</b> 03-05-2019	98.19	1.81	0.00	0.00	0.00	0.00
<b>Start of Calendar Year</b> 01-01-2019	100.00	0.00	0.00	0.00	0.00	0.00
<b>Start of Water Year</b> 09-25-2018	70.95	29.05	6.72	0.00	0.00	0.00
<b>One Year Ago</b> 06-05-2018	100.00	0.00	0.00	0.00	0.00	0.00

**Intensity:**

- None
- D0 Abnormally Dry
- D1 Moderate Drought
- D2 Severe Drought
- D3 Extreme Drought
- D4 Exceptional Drought

The Drought Monitor focuses on broad-scale conditions. Local conditions may vary. See accompanying text summary for forecast statements.

**Author:**

David Simeral  
Western Regional Climate Center



[droughtmonitor.unl.edu](http://droughtmonitor.unl.edu)