



United States Department of Agriculture
National Agricultural Statistics Service
**Georgia Crop Progress
and Condition Report**



Cooperating with the Georgia Department of Agriculture and the Cooperative Extension Service
Southern Regional Field Office · 355 East Hancock Avenue, Suite 100 · Athens, GA 30601 · (706) 713-5400
www.nass.usda.gov

July 15, 2019

Media Contact: Jacqueline Moore

General

According to the National Agricultural Statistics Service in Georgia, there were 5.9 days suitable for fieldwork for the week ending Sunday, July 14, 2019. Precipitation estimates for the state ranged from no rain to 2.28 inches. Average high temperatures ranged from the high 70s to the mid 90s. Average low temperatures ranged from the mid 50s to the high 70s.

County Comments

Widespread rain helped the cotton and soybeans but the corn was hurting due to insufficient rainfall thus far. Forages were improved and warm season grasses looked good. Many were hoping for dry days this week to help make progress on the second hay cutting.

Wade Hutcheson, Walker County

Although some areas of the county received rainfall from scattered showers, the majority of the county remained dry! Rains were very scattered. Corn growers continued to irrigate fields. Some fields neared maturity and black layer. Aphid populations began to crash due to the aphid fungus. Grass slowed down in pastures and hayfields due to the lack of rainfall. Fungicides were sprayed on peanut fields. Corn harvest should start in a couple of weeks.

Raymond Joyce, Laurens County

Cotton was shutting down in many fields from lack of moisture and white flowers were blooming out of the top of many plants. This was very concerning because if we get more rains it will in fact continue to set fruit, but this delay in fruit load will mean that many bolls at the bottom will rot while we wait for the top crop to open during defoliation. Peanuts looked good for now but they started to wilt in many fields as well. Corn began entering black layer in many fields and we should see some corn picked by the end of the week.

Seth McAllister, Terrell County

Crop Progress for Week Ending 07/14/19

| Crop stage | This week (percent) | Prev week (percent) | Prev year (percent) | 5 Year avg (percent) |
|-----------------------------|------------------------|------------------------|------------------------|-------------------------|
| Corn - Mature | 37 | 16 | 28 | NA |
| Cotton - Squaring | 79 | 71 | 79 | 82 |
| Cotton - Setting Bolls..... | 45 | 25 | 34 | 37 |
| Hay - 2nd Cutting | 66 | 56 | 60 | 64 |
| Peaches - Harvested..... | 82 | 73 | 58 | 76 |
| Peanuts - Pegging..... | 82 | 72 | 82 | 75 |
| Soybeans - Emerged..... | 97 | 92 | 94 | NA |
| Soybeans - Blooming | 43 | 26 | 35 | NA |
| Soybeans - Setting Pods | 7 | NA | 5 | NA |
| Tobacco - Topped | 80 | 68 | 91 | NA |
| Tobacco - Harvested..... | 20 | 7 | 33 | 14 |

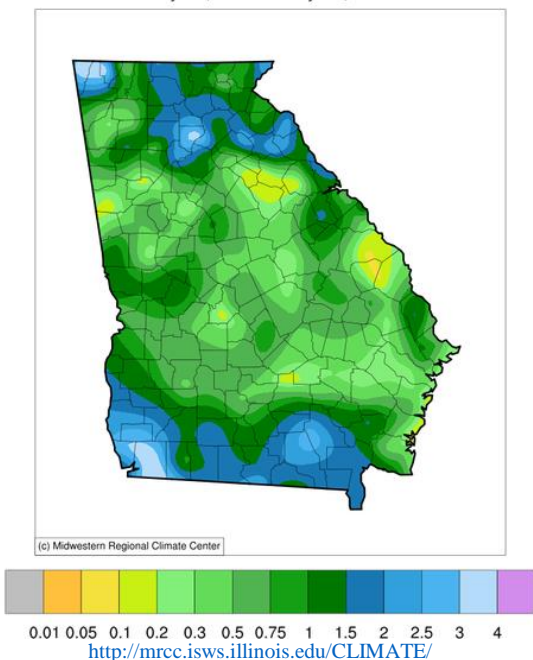
Conditions for Week Ending 07/14/19

| Crop | Very poor (percent) | Poor (percent) | Fair (percent) | Good (percent) | Excellent (percent) |
|------------------------|------------------------|-------------------|-------------------|-------------------|------------------------|
| Cattle | 1 | 5 | 21 | 65 | 8 |
| Corn | 6 | 12 | 22 | 47 | 13 |
| Cotton | 3 | 7 | 31 | 51 | 8 |
| Pasture and range..... | 3 | 11 | 39 | 44 | 3 |
| Peanuts..... | 1 | 5 | 22 | 62 | 10 |
| Soybeans..... | 2 | 7 | 35 | 51 | 5 |
| Tobacco | 1 | 4 | 32 | 55 | 8 |

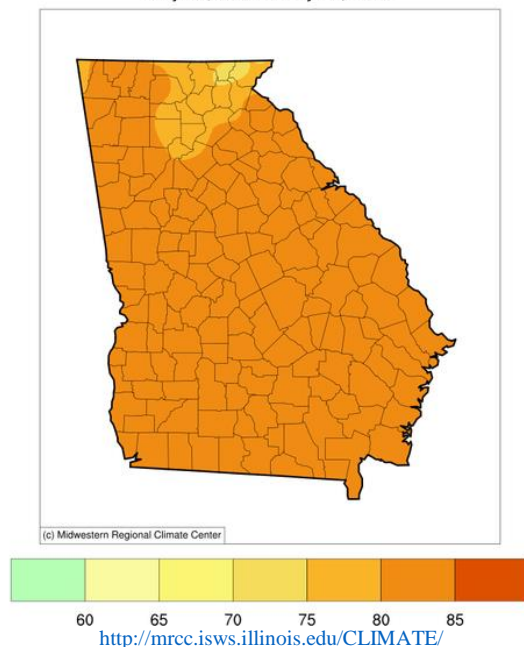
Soil Moisture for Week Ending 07/14/19

| Topsoil | This week (percent) | Previous week (percent) |
|-----------------|------------------------|----------------------------|
| Very short..... | 7 | 6 |
| Short | 34 | 37 |
| Adequate..... | 55 | 55 |
| Surplus..... | 4 | 2 |
| Subsoil | This week (percent) | Previous week (percent) |
| Very short..... | 4 | 3 |
| Short | 28 | 33 |
| Adequate..... | 66 | 63 |
| Surplus..... | 2 | 1 |

Accumulated Precipitation (in)
July 08, 2019 to July 14, 2019

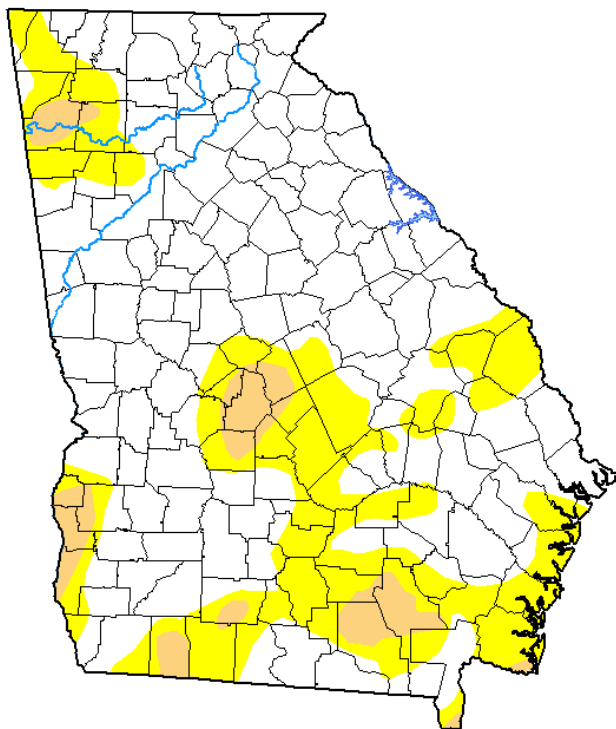


Average Temperature (°F)
July 08, 2019 to July 14, 2019



U.S. Drought Monitor Georgia

July 9, 2019
(Released Thursday, Jul. 11, 2019)
Valid 8 a.m. EDT



Drought Conditions (Percent Area)

| | None | D0-D4 | D1-D4 | D2-D4 | D3-D4 | D4 |
|---|--------|-------|-------|-------|-------|------|
| Current | 68.54 | 31.46 | 5.77 | 0.00 | 0.00 | 0.00 |
| Last Week 07-02-2019 | 63.35 | 36.65 | 6.89 | 0.00 | 0.00 | 0.00 |
| 3 Months Ago 04-09-2019 | 20.88 | 79.12 | 14.47 | 0.00 | 0.00 | 0.00 |
| Start of Calendar Year 01-01-2019 | 100.00 | 0.00 | 0.00 | 0.00 | 0.00 | 0.00 |
| Start of Water Year 09-25-2018 | 70.95 | 29.05 | 6.72 | 0.00 | 0.00 | 0.00 |
| One Year Ago 07-10-2018 | 100.00 | 0.00 | 0.00 | 0.00 | 0.00 | 0.00 |

Intensity:

- None
- D0 Abnormally Dry
- D1 Moderate Drought
- D2 Severe Drought
- D3 Extreme Drought
- D4 Exceptional Drought

The Drought Monitor focuses on broad-scale conditions. Local conditions may vary. See accompanying text summary for forecast statements.

Author:

Richard Tinker
CPC/NOAA/NWS/NCEP



droughtmonitor.unl.edu