



United States Department of Agriculture
National Agricultural Statistics Service
**Georgia Crop Progress
and Condition Report**



Cooperating with the Georgia Department of Agriculture and the Cooperative Extension Service
Southern Regional Field Office · 355 East Hancock Avenue, Suite 100 · Athens, GA 30601 · (706) 713-5400
www.nass.usda.gov

July 22, 2019

Media Contact: Jacqueline Moore

General

According to the National Agricultural Statistics Service in Georgia, there were 6.0 days suitable for fieldwork for the week ending Sunday, July 21, 2019. Precipitation estimates for the state ranged from no rain to 2.71 inches. Average high temperatures ranged from the low 80s to the high 90s. Average low temperatures ranged from the mid 60s to the mid 70s.

County Comments

Decent rain across the county helped cotton, soybeans, and forages, however the corn is done and most of it got too little rain too late.

Wade Hutcheson, Walker County

It was extremely dry in most of the county. Very isolated showers gave relief to small areas but not many. We have corn that has become fully mature and we can now cut the water off of it. Dryland cotton was blooming out the top of the plant, and dryland peanuts have still not lapped the middles and will not if we do not get any rain. I am afraid that a lot of the dryland cotton is about done. We were looking pretty good up until about a month ago, but rain has eluded us since. It is still not too late to make a crop on the later planted stuff.

Cole Moon, Bleckley County

We are still very dry. We had about an inch of rain over most of the county, but many cotton fields were blooming out of the top because it has been so dry. Peanuts started to wilt and corn was drying down very fast. We should see some corn fields harvested this coming week. Stink bugs started moving into cotton fields, and many were sprayed this past week, which means we should start to see some secondary caterpillar pest levels increase in the next couple of weeks as a response.

Seth McAllister, Terrell County

Crop Progress for Week Ending 07/21/19

Crop stage	This week (percent)	Prev week (percent)	Prev year (percent)	5 Year avg (percent)
Corn - Mature	55	37	46	NA
Cotton - Squaring	90	79	87	90
Cotton - Setting Bolls.....	60	45	50	53
Hay - 2nd Cutting	77	66	73	74
Peaches - Harvested.....	87	82	68	83
Peanuts - Pegging.....	92	82	89	85
Soybeans - Blooming	56	43	49	NA
Soybeans - Setting Pods	21	7	16	NA
Tobacco - Topped	86	80	95	NA
Tobacco - Harvested.....	28	20	44	25

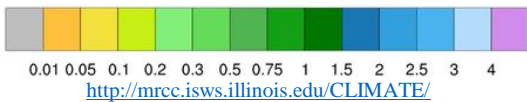
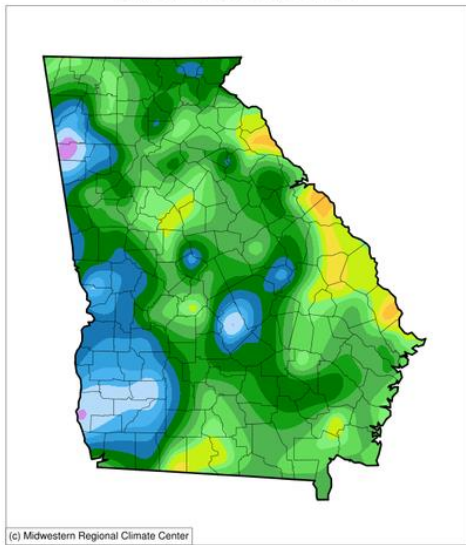
Conditions for Week Ending 07/21/19

Crop	Very poor (percent)	Poor (percent)	Fair (percent)	Good (percent)	Excellent (percent)
Cattle	0	6	24	64	6
Corn	6	10	22	48	14
Cotton	3	7	30	52	8
Pasture and range.....	4	13	38	41	4
Peanuts.....	1	4	25	60	10
Soybeans.....	3	9	36	48	4
Tobacco.....	1	5	37	49	8

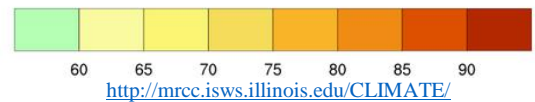
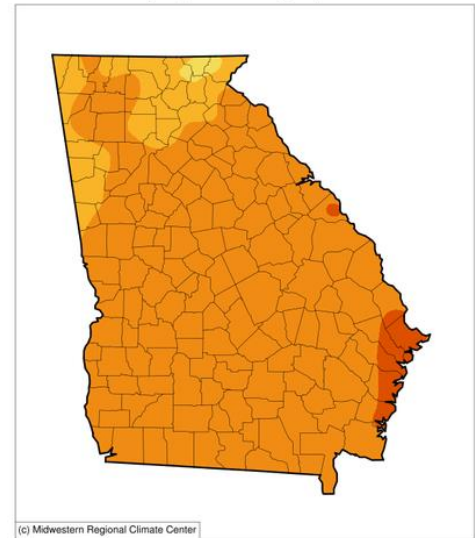
Soil Moisture for Week Ending 07/21/19

Topsoil	This week (percent)	Previous week (percent)
Very short.....	8	7
Short.....	32	34
Adequate.....	53	55
Surplus.....	7	4
Subsoil	This week (percent)	Previous week (percent)
Very short.....	5	4
Short.....	28	28
Adequate.....	64	66
Surplus.....	3	2

Accumulated Precipitation (in)
July 15, 2019 to July 21, 2019



Average Temperature (°F)
July 15, 2019 to July 21, 2019



U.S. Drought Monitor Georgia

July 16, 2019

(Released Thursday, Jul. 18, 2019)

Valid 8 a.m. EDT

Drought Conditions (Percent Area)

	None	D0-D4	D1-D4	D2-D4	D3-D4	D4
Current	71.78	28.22	5.37	0.20	0.00	0.00
Last Week 07-09-2019	68.54	31.46	5.77	0.00	0.00	0.00
3 Months Ago 04-16-2019	23.15	76.85	10.59	0.00	0.00	0.00
Start of Calendar Year 01-01-2019	100.00	0.00	0.00	0.00	0.00	0.00
Start of Water Year 09-25-2018	70.95	29.05	6.72	0.00	0.00	0.00
One Year Ago 07-17-2018	100.00	0.00	0.00	0.00	0.00	0.00

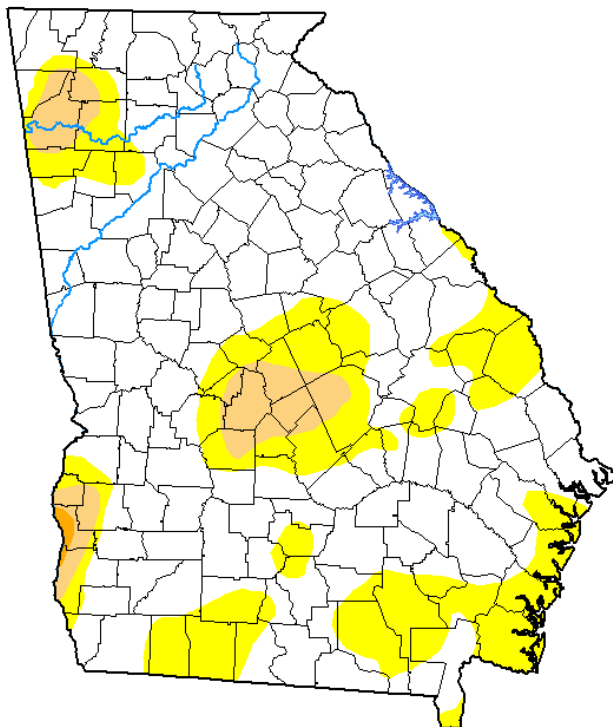
Intensity:

None	D2 Severe Drought
D0 Abnormally Dry	D3 Extreme Drought
D1 Moderate Drought	D4 Exceptional Drought

The Drought Monitor focuses on broad-scale conditions. Local conditions may vary. See accompanying text summary for forecast statements.

Author:

Brad Rippey
U.S. Department of Agriculture



droughtmonitor.unl.edu