



United States Department of Agriculture
National Agricultural Statistics Service
**Georgia Crop Progress
and Condition Report**



Cooperating with the Georgia Department of Agriculture and the Cooperative Extension Service
Southern Regional Field Office · 355 East Hancock Avenue, Suite 100 · Athens, GA 30601 · (706) 713-5400
www.nass.usda.gov

August 5, 2019

Media Contact: Jacqueline Moore

General

According to the National Agricultural Statistics Service in Georgia, there were 6.2 days suitable for fieldwork for the week ending Sunday, August 4, 2019. Precipitation estimates for the state ranged from no rain to 4.16 inches. Average high temperatures ranged from the high 70s to mid 90s. Average low temperatures ranged from the low 60s to the high 60s.

County Comments

It is very dry. Many fields that looked very good throughout the season have crashed fast. Cotton crops have wilted and has bloomed out the top. Peanuts are very wilted, and our corn harvest looked pathetic. Many dryland fields that I have seen didn't even have ears on the stalks unless it was in a bottom of the field that held moisture longer.

Seth McAllister, Terrell County

We received a much needed rain which has replenished top soil moisture and our pastures around the county. This rain also was important for corn producers around the county as most of it is in the latter stages of reproductive development.

Thad Glenn, Stephen County

Scattered showers have helped a few crop fields. Growers are having trouble keeping irrigated fields watered enough. Dry conditions continued to cause a decline of hay and grazing as well. Overall crop conditions are fair at best.

Peyton Sapp, Burke County

It has been very hot and dry and most of the crops are at a critical stage of growth. If it doesn't rain soon, we may begin to experience some significant yield loss.

Ross Greene, Evans County

Crop Progress for Week Ending 08/04/19

Crop stage	This week (percent)	Prev week (percent)	Prev year (percent)	5 Year avg (percent)
Corn - Mature	71	66	75	NA
Corn - Harvested	14	3	10	11
Cotton - Squaring	98	95	96	96
Cotton - Setting Bolls.....	79	72	74	79
Cotton - Bolls Opening ...	2	NA	1	0
Hay - 2nd Cutting	92	86	87	87
Peaches - Harvested.....	95	92	89	94
Peanuts - Pegging.....	99	96	97	96
Soybeans - Blooming	79	67	72	NA
Soybeans - Setting Pods	50	35	43	NA
Tobacco - Topped	93	91	NA	NA
Tobacco - Harvested.....	48	38	57	50

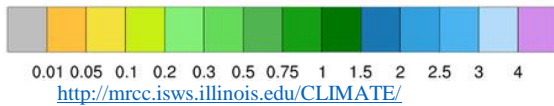
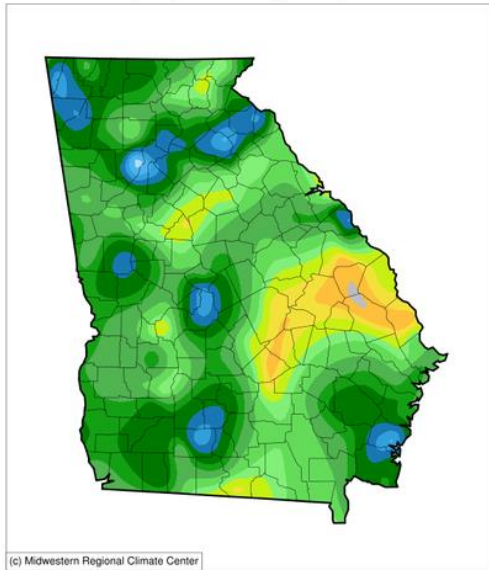
Conditions for Week Ending 08/04/19

Crop	Very poor (percent)	Poor (percent)	Fair (percent)	Good (percent)	Excellent (percent)
Cattle	1	5	24	60	10
Corn	5	10	24	47	14
Cotton	2	8	27	53	10
Pasture and range.....	4	14	37	40	5
Peanuts.....	1	6	26	57	10
Soybeans	2	8	36	48	6
Tobacco.....	3	4	29	54	10

Soil Moisture for Week Ending 08/04/19

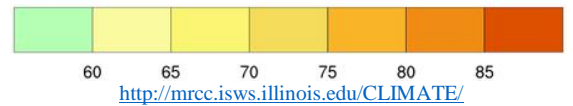
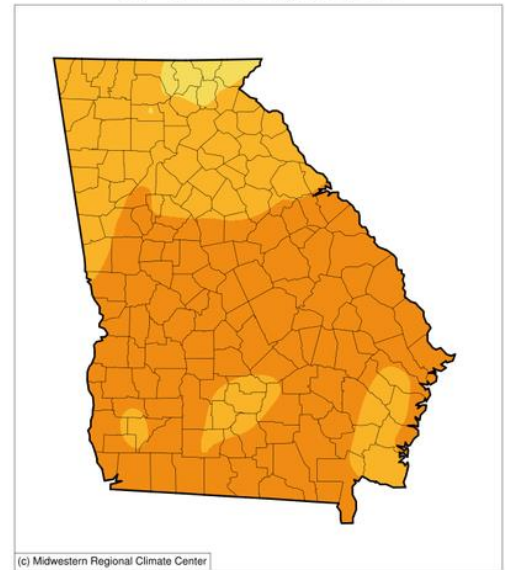
Topsoil	This week (percent)	Previous week (percent)
Very short.....	13	10
Short	39	34
Adequate.....	44	52
Surplus.....	4	4
Subsoil	This week (percent)	Previous week (percent)
Very short.....	9	7
Short	36	33
Adequate.....	54	59
Surplus.....	1	1

Accumulated Precipitation (in)
July 29, 2019 to August 04, 2019



<http://mrcc.isws.illinois.edu/CLIMATE/>

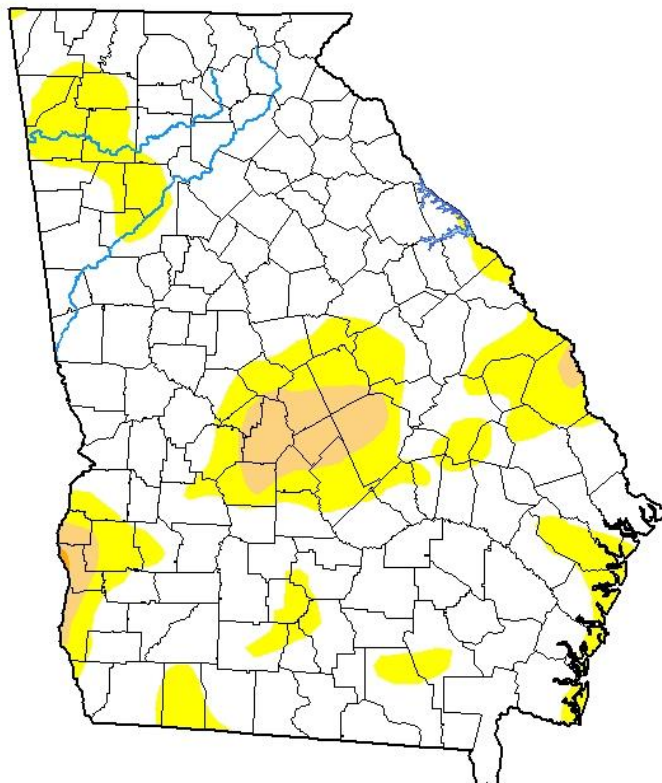
Average Temperature (°F)
July 29, 2019 to August 04, 2019



<http://mrcc.isws.illinois.edu/CLIMATE/>

U.S. Drought Monitor Georgia

July 30, 2019
(Released Thursday, Aug. 1, 2019)
Valid 8 a.m. EDT



Drought Conditions (Percent Area)

	None	D0-D4	D1-D4	D2-D4	D3-D4	D4
Current	76.37	23.63	4.25	0.05	0.00	0.00
Last Week 07-23-2019	75.31	24.69	4.05	0.05	0.00	0.00
3 Months Ago 04-30-2019	29.58	70.42	13.09	0.00	0.00	0.00
Start of Calendar Year 01-01-2019	100.00	0.00	0.00	0.00	0.00	0.00
Start of Water Year 09-25-2018	70.95	29.05	6.72	0.00	0.00	0.00
One Year Ago 07-31-2018	100.00	0.00	0.00	0.00	0.00	0.00

Intensity:

- None
- D0 Abnormally Dry
- D1 Moderate Drought
- D2 Severe Drought
- D3 Extreme Drought
- D4 Exceptional Drought

The Drought Monitor focuses on broad-scale conditions. Local conditions may vary. See accompanying text summary for forecast statements.

Author:

Curtis Riganti
National Drought Mitigation Center



droughtmonitor.unl.edu