



United States Department of Agriculture
National Agricultural Statistics Service
**Georgia Crop Progress
and Condition Report**



Cooperating with the Georgia Department of Agriculture and the Cooperative Extension Service
Southern Regional Field Office · 355 East Hancock Avenue, Suite 100 · Athens, GA 30601 · (706) 713-5400
www.nass.usda.gov

August 12, 2019

Media Contact: Jacqueline Moore

General

According to the National Agricultural Statistics Service in Georgia, there were 6.3 days suitable for fieldwork for the week ending Sunday, August 11, 2019. Precipitation estimates for the state ranged from no rain to 4.59 inches. Average high temperatures ranged from the low 80s to the high 90s. Average low temperatures ranged from the low 60s to the high 70s.

County Comments

Extreme heat and spotty showers last week. Most places received at least one decent shower, but in this heat, it did not stay long. Corn harvest continued, as well as some soybeans. Yields have been pretty good so far. Early planted cotton was cutting out and bolls were opening. Earliest irrigated peanuts put on a lot of pods if they were watered on schedule. Hopefully rain and cooler temperatures are in the future.

Cole Moon, Bleckley County

Some recent rains have been a help to sustaining the crops. Most were thunderstorms with more intensity than the soil could absorb, which created runoff and did not benefit soil moisture levels. As moisture is redistributed, these rains will have been a short term benefit unless more showers follow.

Jason E. Mallard, Screven County

A little corn began coming out of the field at the end of last week, but depending on the weather, we should have a lot more coming out of the field soon. Dryland cotton and peanuts that were planted late have not performed well with the weather we have had. Also concerned about the early planted dryland peanuts as they seem to have shut down during the July dry spell and have not yet recovered. The vines look good, but the yield is definitely off. The irrigated crops looked very good.

Ross Greene, Evans County

Crop Progress for Week Ending 08/11/19

Crop stage	This week (percent)	Prev week (percent)	Prev year (percent)	5 Year avg (percent)
Corn - Mature	84	71	85	NA
Corn - Harvested	31	14	21	24
Cotton - Setting Bolls.....	88	79	83	88
Cotton - Bolls Opening ...	9	2	3	3
Hay - 2nd Cutting	95	92	91	90
Peanuts - Pegging.....	100	99	98	98
Soybeans - Blooming	87	79	82	NA
Soybeans - Setting Pods	62	50	57	NA
Tobacco - Topped	96	93	NA	NA
Tobacco - Harvested.....	55	48	68	60

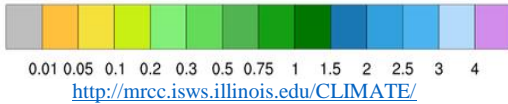
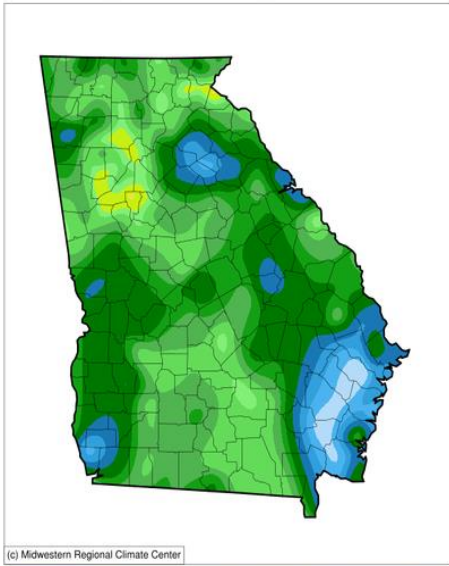
Conditions for Week Ending 08/11/19

Crop	Very poor (percent)	Poor (percent)	Fair (percent)	Good (percent)	Excellent (percent)
Cattle	1	5	22	63	9
Corn	6	11	22	48	13
Cotton	2	9	32	51	6
Pasture and range.....	4	14	36	42	4
Peanuts.....	1	6	26	58	9
Pecans.....	1	6	31	58	4
Soybeans.....	2	8	36	50	4
Tobacco	1	2	32	59	6

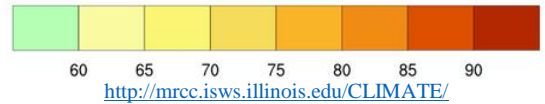
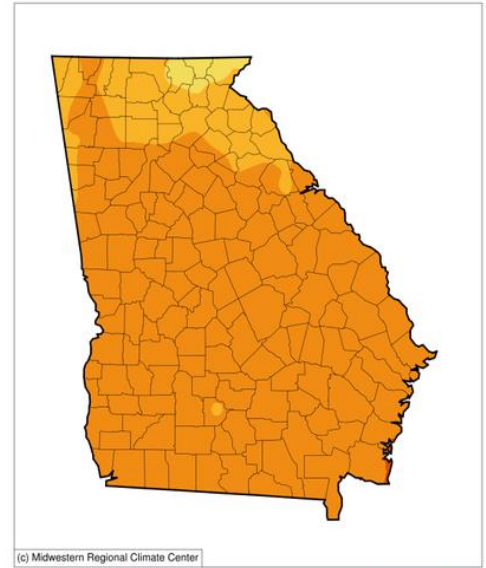
Soil Moisture for Week Ending 08/11/19

Topsoil	This week (percent)	Previous week (percent)
Very short.....	15	13
Short	42	39
Adequate.....	42	44
Surplus.....	1	4
Subsoil	This week (percent)	Previous week (percent)
Very short.....	13	9
Short	39	36
Adequate.....	47	54
Surplus.....	1	1

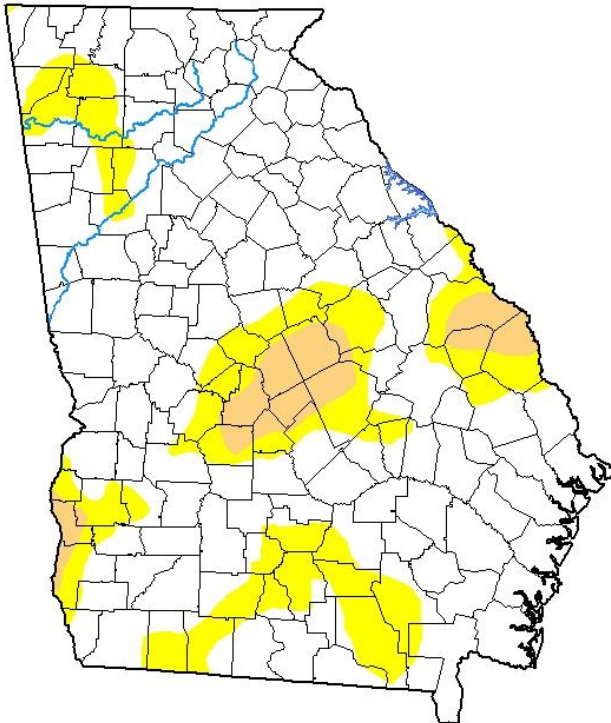
Accumulated Precipitation (in)
August 05, 2019 to August 11, 2019



Average Temperature (°F)
August 05, 2019 to August 11, 2019



U.S. Drought Monitor Georgia



August 6, 2019

(Released Thursday, Aug. 8, 2019)

Valid 8 a.m. EDT

Drought Conditions (Percent Area)

	None	D0-D4	D1-D4	D2-D4	D3-D4	D4
Current	75.77	24.23	5.50	0.00	0.00	0.00
Last Week 07-30-2019	76.37	23.63	4.25	0.05	0.00	0.00
3 Months Ago 05-07-2019	29.58	70.42	18.24	0.00	0.00	0.00
Start of Calendar Year 01-01-2019	100.00	0.00	0.00	0.00	0.00	0.00
Start of Water Year 09-25-2018	70.95	29.05	6.72	0.00	0.00	0.00
One Year Ago 08-07-2018	100.00	0.00	0.00	0.00	0.00	0.00

Intensity:

- None
- D0 Abnormally Dry
- D1 Moderate Drought
- D2 Severe Drought
- D3 Extreme Drought
- D4 Exceptional Drought

The Drought Monitor focuses on broad-scale conditions. Local conditions may vary. See accompanying text summary for forecast statements.

Author:

Richard Tinker
CPC/NOAA/NWS/NCEP



droughtmonitor.unl.edu