



United States Department of Agriculture
National Agricultural Statistics Service
**Georgia Crop Progress
and Condition Report**



Cooperating with the Georgia Department of Agriculture and the Cooperative Extension Service
Southern Regional Field Office · 355 East Hancock Avenue, Suite 100 · Athens, GA 30601 · (706) 713-5400
www.nass.usda.gov

August 26, 2019

Media Contact: Jacqueline Moore

General

According to the National Agricultural Statistics Service in Georgia, there were 5.9 days suitable for fieldwork for the week ending Sunday, August 25, 2019. Precipitation estimates for the state ranged from no rain to 7.73 inches. Average high temperatures ranged from the low 80s to the mid 90s. Average low temperatures ranged from the low 60s to the high 70s.

County Comments

Parts of the county received good rainfall, but there was still a majority that did not receive much. Although dry weather is good for harvest, we still have a lot of crops in the field that need to be finished out. We are getting closer to finishing up the first corn crop. There is a lot of early cotton opening up; irrigation was terminated on several fields; defoliation should begin in the next couple of weeks on some fields. It is likely some peanuts will be dug very soon. There is a good crop on irrigated nuts, but the dryland is not good at all. There were some early soybeans being cut as well.

Cole Moon, Bleckley County

Some cattle producers reported already feeding hay due to the lack of rainfall and diminished pastures.

Brooklyne Wassel, Pike County

We had scattered showers, but most of the county remained very dry. Corn harvest continued and our irrigated fields looked good where irrigation was fully utilized. This year's cotton crop looks good right now, and bolls are opening up daily. The earliest fields have started to be defoliated, and pickers will begin rolling the first week of September. Peanuts also progressed; dryland fields are not too good, but our irrigated crop shows very nice potential.

Seth McAllister, Terrell County

Crop Progress for Week Ending 08/25/19

Crop stage	This week (percent)	Prev week (percent)	Prev year (percent)	5 Year avg (percent)
Corn - Mature	95	91	95	NA
Corn - Harvested	65	49	52	62
Cotton - Setting Bolls.....	97	95	95	97
Cotton - Bolls Opening ...	30	22	13	19
Hay - 3rd Cutting	34	15	NA	NA
Soybeans - Blooming	94	91	94	NA
Soybeans - Setting Pods	81	75	80	NA
Soybeans - Dropping				
Leaves	2	NA	NA	NA
Tobacco - Harvested.....	67	61	86	75

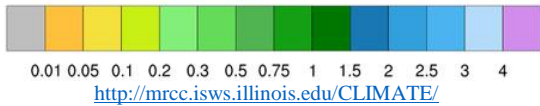
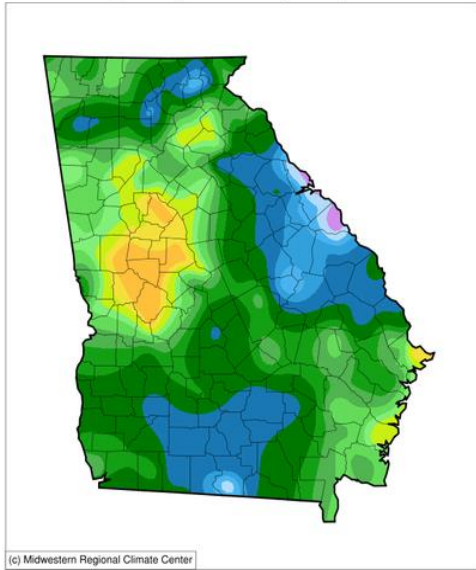
Conditions for Week Ending 08/25/19

Crop	Very poor (percent)	Poor (percent)	Fair (percent)	Good (percent)	Excellent (percent)
Cattle	1	7	26	56	10
Corn	6	11	24	44	15
Cotton	3	8	33	47	9
Pasture and range.....	6	14	39	37	4
Peanuts.....	1	8	26	54	11
Pecans.....	1	6	22	69	2
Soybeans.....	2	11	41	42	4

Soil Moisture for Week Ending 08/25/19

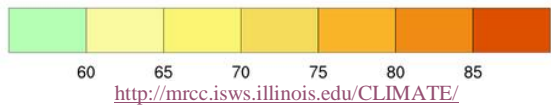
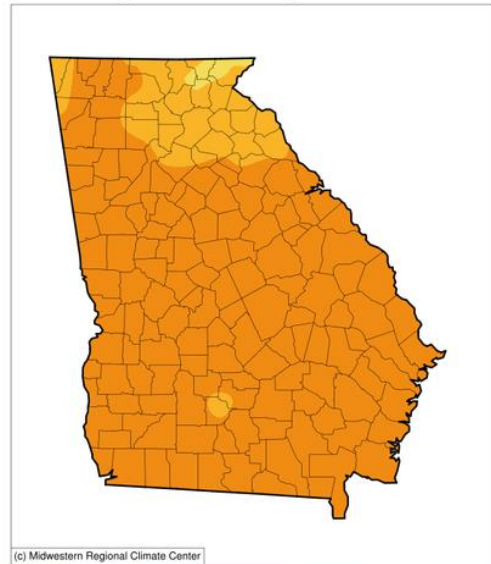
Topsoil	This week (percent)	Previous week (percent)
Very short.....	13	15
Short	34	41
Adequate.....	50	42
Surplus.....	3	2
Subsoil	This week (percent)	Previous week (percent)
Very short.....	10	12
Short	38	40
Adequate.....	50	46
Surplus.....	2	2

Accumulated Precipitation (in)
August 19, 2019 to August 25, 2019



<http://mrcc.isws.illinois.edu/CLIMATE/>

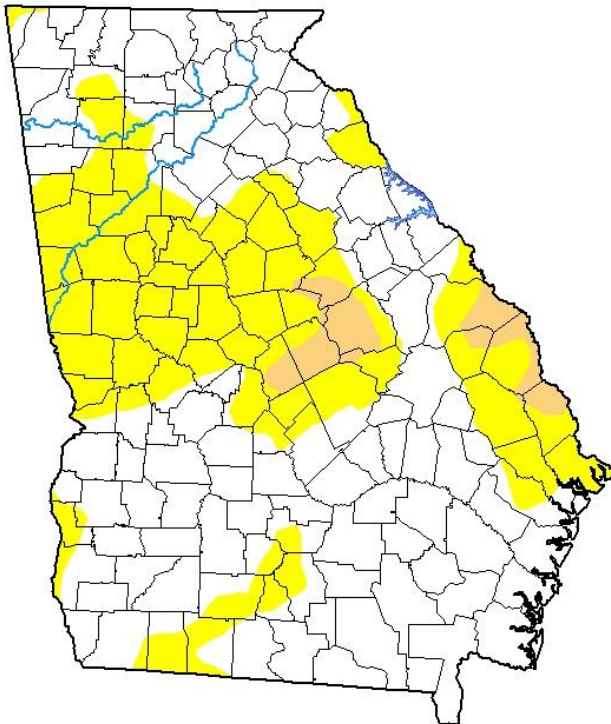
Average Temperature (°F)
August 19, 2019 to August 25, 2019



<http://mrcc.isws.illinois.edu/CLIMATE/>

U.S. Drought Monitor Georgia

August 20, 2019
(Released Thursday, Aug. 22, 2019)
Valid 8 a.m. EDT



Drought Conditions (Percent Area)

	None	D0-D4	D1-D4	D2-D4	D3-D4	D4
Current	63.12	36.88	3.84	0.00	0.00	0.00
Last Week 08-13-2019	55.34	44.66	8.51	0.00	0.00	0.00
3 Months Ago 05-21-2019	32.11	67.89	17.85	0.00	0.00	0.00
Start of Calendar Year 01-01-2019	100.00	0.00	0.00	0.00	0.00	0.00
Start of Water Year 09-25-2018	70.95	29.05	6.72	0.00	0.00	0.00
One Year Ago 08-21-2018	100.00	0.00	0.00	0.00	0.00	0.00

Intensity:

- None
- D0 Abnormally Dry
- D1 Moderate Drought
- D2 Severe Drought
- D3 Extreme Drought
- D4 Exceptional Drought

The Drought Monitor focuses on broad-scale conditions. Local conditions may vary. See accompanying text summary for forecast statements.

Author:

Jessica Blunden
NCEI/NOAA



droughtmonitor.unl.edu