



United States Department of Agriculture  
National Agricultural Statistics Service  
**Georgia Crop Progress  
and Condition Report**



Cooperating with the Georgia Department of Agriculture and the Cooperative Extension Service  
Southern Regional Field Office · 355 East Hancock Avenue, Suite 100 · Athens, GA 30601 · (706) 713-5400  
[www.nass.usda.gov](http://www.nass.usda.gov)

This report contains data collected each week from respondents across the state whose occupations provide them opportunities to discuss agricultural production with farmers in their counties as well as to make visual observations. We thank all who have contributed to this report.

July 27, 2020

Media Contact: Anthony Prillaman

**General**

According to the National Agricultural Statistics Service in Georgia, there were 6.3 days suitable for fieldwork for the week ending Sunday, July 26, 2020. Precipitation ranged from trace amounts of rain to 3.68 inches. Average high temperatures ranged from the low 80s to the high 90s. Average low temperatures ranged from the mid 60s to the low 70s.

**Crops**

Weather continued to be hot and mostly dry throughout the state. Although there were some spotty thunderstorms, irrigation was running in most areas where available. Bermudagrass stem maggots were reported by some producers in the central part of the state. Some corn producers in the northern part of the state reported signs of heat stress in their corn. Cotton, peanut, and soybean progress remained on schedule despite the dry temperatures and limited moisture. Preventative herbicides and pesticides were sprayed on peanuts in the central portion of the state. Silage cutting is expected to begin soon. Several producers continued their second hay cutting with some beginning a third cutting. Peach producers remain optimistic of this year's peach crop.

**Livestock and Pastures**

Overall, livestock remained in generally good condition. Some producers noticed higher concentrations of flies around their herds. Decreased rainfall and elevated temperatures throughout the state caused stress to pastures, hayfields, and forage crops.

**Crop Progress for Week Ending 07/26/20**

Crop stage	Prev year	Prev week	This week	5 Year avg
	(percent)	(percent)	(percent)	(percent)
Corn - Mature .....	63	34	56	59
Cotton - Squaring .....	94	88	94	93
Cotton - Setting Bolls.....	69	49	63	64
Hay - 2nd Cutting .....	83	85	90	81
Peaches - Harvested.....	91	91	94	89
Peanuts - Pegging.....	95	88	94	92
Soybeans - Blooming .....	64	60	77	62
Soybeans - Setting Pods.	31	27	50	32
Tobacco - Harvested.....	35	23	28	38

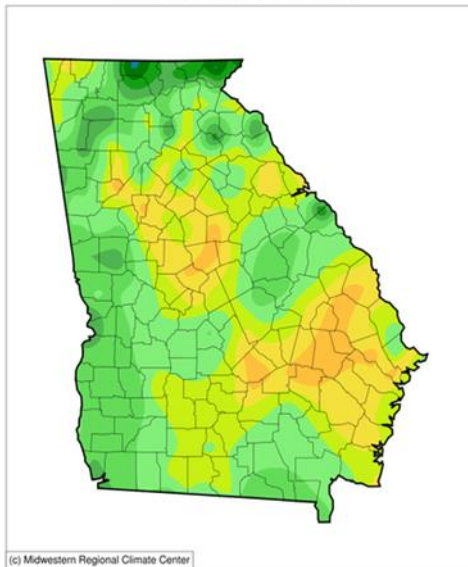
**Conditions for Week Ending 07/26/20**

Crop	Very poor	Poor	Fair	Good	Excellent
	(percent)	(percent)	(percent)	(percent)	(percent)
Cattle .....	1	4	27	60	8
Corn .....	1	5	22	61	11
Cotton .....	1	6	17	62	14
Pasture and range..	3	9	34	46	8
Peanuts.....	1	6	20	57	16
Soybeans.....	1	4	27	58	10
Tobacco.....	0	3	30	65	2

**Soil Moisture for Week Ending 07/26/20**

Topsoil	Previous week	This week
	(percent)	(percent)
Very short.....	8	13
Short .....	50	47
Adequate.....	42	39
Surplus.....	0	1
Subsoil	Previous week	This week
	(percent)	(percent)
Very short.....	6	11
Short .....	40	45
Adequate.....	51	43
Surplus.....	3	1

**Accumulated Precipitation (in)**  
July 20, 2020 to July 26, 2020



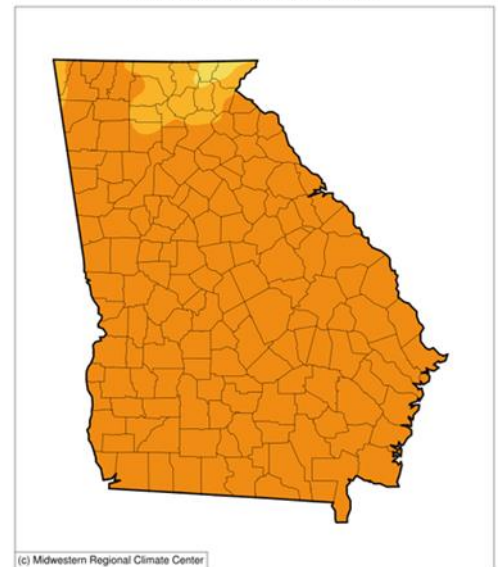
(c) Midwestern Regional Climate Center



0.01 0.1 0.25 0.5 1 1.5 2 2.5 3 4 5 6 8

<http://mrcc.isws.illinois.edu/CLIMATE/>

**Average Temperature (°F)**  
July 20, 2020 to July 26, 2020



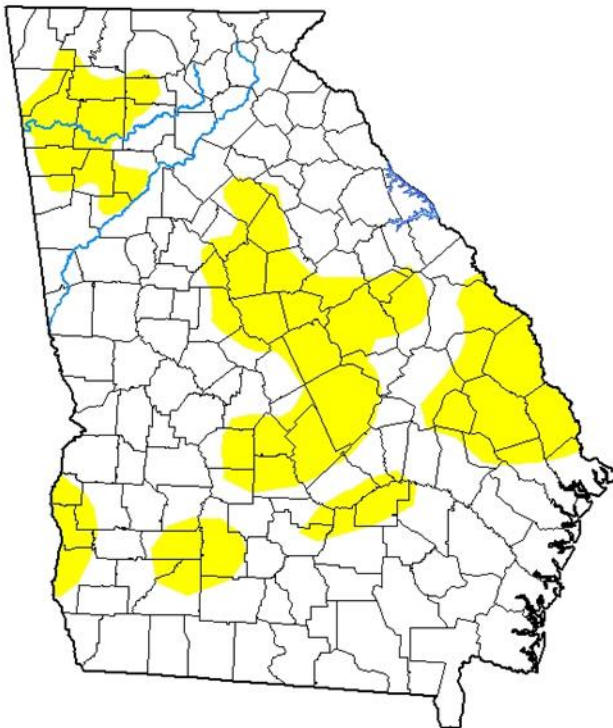
(c) Midwestern Regional Climate Center



60 65 70 75 80 85 90

<http://mrcc.isws.illinois.edu/CLIMATE/>

## U.S. Drought Monitor Georgia



**July 21, 2020**

(Released Thursday, Jul. 23, 2020)

Valid 8 a.m. EDT

Drought Conditions (Percent Area)

	None	D0-D4	D1-D4	D2-D4	D3-D4	D4
<b>Current</b>	73.05	26.95	0.00	0.00	0.00	0.00
<b>Last Week</b> 07-14-2020	97.56	2.44	0.00	0.00	0.00	0.00
<b>3 Months Ago</b> 04-21-2020	97.04	2.96	0.00	0.00	0.00	0.00
<b>Start of Calendar Year</b> 12-31-2019	96.00	4.00	0.00	0.00	0.00	0.00
<b>Start of Water Year</b> 10-01-2019	0.00	100.00	61.58	28.35	4.49	0.00
<b>One Year Ago</b> 07-23-2019	75.31	24.69	4.05	0.05	0.00	0.00

**Intensity:**

- None
- D0 Abnormally Dry
- D1 Moderate Drought
- D2 Severe Drought
- D3 Extreme Drought
- D4 Exceptional Drought

The Drought Monitor focuses on broad-scale conditions. Local conditions may vary. For more information on the Drought Monitor, go to <https://droughtmonitor.unl.edu/About.aspx>

**Author:**

Richard Heim  
NCEI/NOAA



[droughtmonitor.unl.edu](http://droughtmonitor.unl.edu)