



United States Department of Agriculture  
National Agricultural Statistics Service  
**Georgia Crop Progress  
and Condition Report**



Cooperating with the Georgia Department of Agriculture and the Cooperative Extension Service  
Southern Regional Field Office · 355 East Hancock Avenue, Suite 100 · Athens, GA 30601 · (706) 713-5400  
[www.nass.usda.gov](http://www.nass.usda.gov)

This report contains data collected each week from respondents across the state whose occupations provide them opportunities to discuss agricultural production with farmers in their counties as well as to make visual observations. We thank all who have contributed to this report.

October 13, 2020

Media Contact: Anthony Prillaman

**General**

According to the National Agricultural Statistics Service in Georgia, there were 5.5 days suitable for fieldwork for the week ending Sunday, October 11, 2020. Precipitation ranged from no rain to 7.0 inches. Average high temperatures ranged from the mid 60s to the mid 80s. Average low temperatures ranged from the high 40s to the low 70s.

**Crops**

Remnants of Hurricane Delta brought needed rain to the northern and eastern parts of the state which delayed harvest of crops. With a week of mostly dry weather in the central and southern parts of the state, many growers dug and harvested peanuts. Cotton was defoliated and picked in the central part of the state. Some growers noted boll rot which is expected to affect cotton yields. Soybeans continued dropping leaves across the state. Early variety pecans were harvested in the southeastern part of the state.

**Livestock and Pastures**

Cattle producers across much of the state continued preparing for fall and winter forage planting. Some producers reported seasonal pasture decline. Recently planted rye forages emerged for cattle feed.

**Crop Progress for Week Ending 10/11/20**

Crop stage	Prev year (percent)	Prev week (percent)	This week (percent)	5 Year avg (percent)
Cotton - Bolls Opening ....	94	81	87	93
Cotton - Harvested .....	37	8	13	22
Hay - 3rd Cutting .....	90	91	93	92
Oats - Planted .....	9	12	23	16
Peanuts - Dug .....	72	26	45	61
Peanuts - Harvested .....	56	13	27	44
Pecans - Harvested .....	9	1	7	7
Rye - Planted .....	14	9	17	18
Soybeans - Dropping				
Leaves .....	79	64	74	76
Soybeans - Harvested .....	30	12	21	24
Winter wheat - Planted ....	2	1	9	4

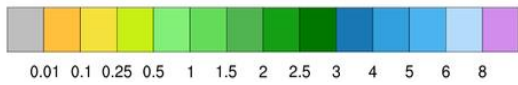
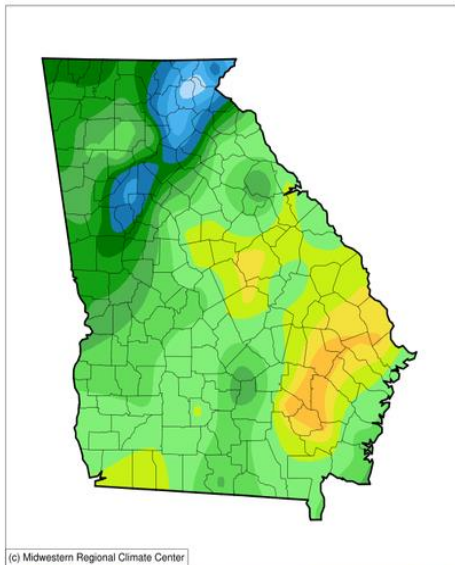
**Conditions for Week Ending 10/11/20**

Crop	Very poor (percent)	Poor (percent)	Fair (percent)	Good (percent)	Excellent (percent)
Cattle .....	1	4	25	59	11
Cotton .....	3	10	33	46	8
Pasture and range ..	2	7	31	53	7
Peanuts .....	1	7	25	54	13
Pecans .....	0	2	14	54	30
Soybeans .....	2	6	28	57	7

**Soil Moisture for Week Ending 10/11/20**

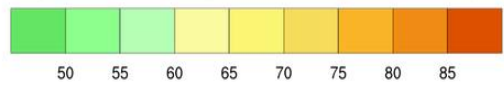
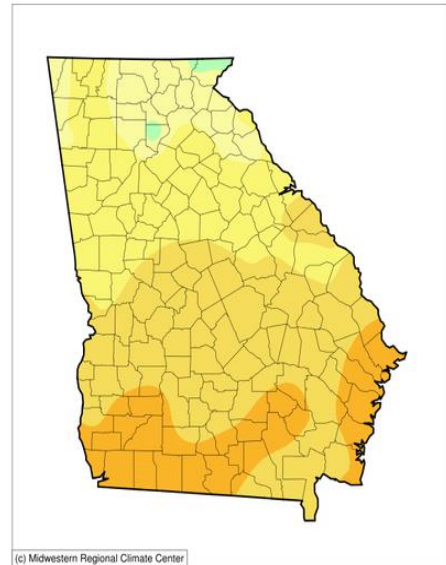
Topsoil	Previous week (percent)	This week (percent)
Very short .....	1	1
Short .....	8	13
Adequate .....	75	78
Surplus .....	16	8
Subsoil	Previous week (percent)	This week (percent)
Very short .....	1	2
Short .....	9	12
Adequate .....	78	81
Surplus .....	12	5

**Accumulated Precipitation (in)**  
October 05, 2020 to October 11, 2020



<http://mrcc.isws.illinois.edu/CLIMATE/>

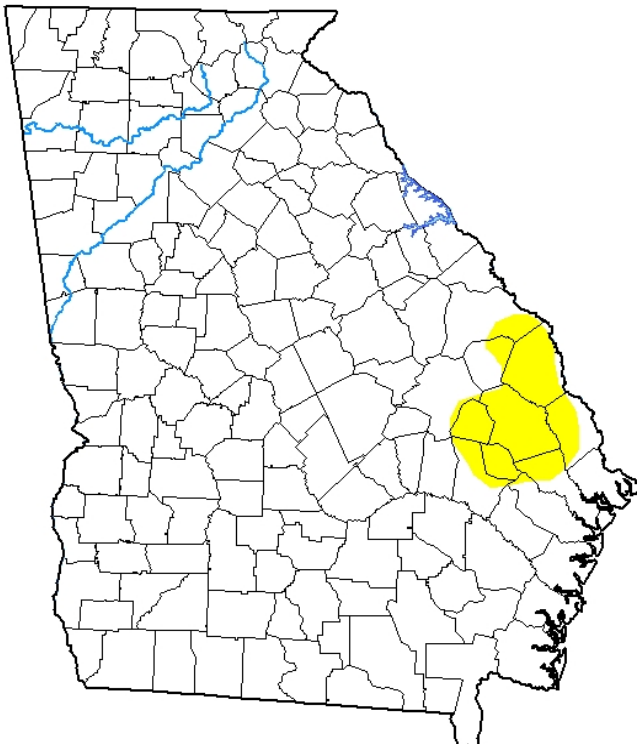
**Average Temperature (°F)**  
October 05, 2020 to October 11, 2020



<http://mrcc.isws.illinois.edu/CLIMATE/>

## U.S. Drought Monitor Georgia

**October 6, 2020**  
(Released Thursday, Oct. 8, 2020)  
Valid 8 a.m. EDT



*Drought Conditions (Percent Area)*

	None	D0-D4	D1-D4	D2-D4	D3-D4	D4
<b>Current</b>	95.41	4.59	0.00	0.00	0.00	0.00
<b>Last Week</b> 09-29-2020	97.20	2.80	0.00	0.00	0.00	0.00
<b>3 Months Ago</b> 07-07-2020	100.00	0.00	0.00	0.00	0.00	0.00
<b>Start of Calendar Year</b> 12-31-2019	96.00	4.00	0.00	0.00	0.00	0.00
<b>Start of Water Year</b> 09-29-2020	97.20	2.80	0.00	0.00	0.00	0.00
<b>One Year Ago</b> 10-08-2019	0.00	100.00	97.16	52.98	11.80	0.00

**Intensity:**

- None
- D0 Abnormally Dry
- D1 Moderate Drought
- D2 Severe Drought
- D3 Extreme Drought
- D4 Exceptional Drought

The Drought Monitor focuses on broad-scale conditions. Local conditions may vary. For more information on the Drought Monitor, go to <https://droughtmonitor.unl.edu/About.aspx>

**Author:**

Brian Fuchs  
National Drought Mitigation Center



[droughtmonitor.unl.edu](http://droughtmonitor.unl.edu)