



United States Department of Agriculture
National Agricultural Statistics Service
**Georgia Crop Progress
and Condition Report**



Cooperating with the Georgia Department of Agriculture and the Cooperative Extension Service
Southern Regional Field Office · 355 East Hancock Avenue, Suite 100 · Athens, GA 30601 · (706) 713-5400
www.nass.usda.gov

This report contains data collected each week from respondents across the state whose occupations provide them opportunities to discuss agricultural production with farmers in their counties as well as to make visual observations. We thank all who have contributed to this report.

June 14, 2021

Media Contact: Anthony Prillaman

General

According to the National Agricultural Statistics Service in Georgia, there were 5.0 days suitable for fieldwork for the week ending Sunday, June 13, 2021. Precipitation ranged from 0.2 inches of rain to 6.2 inches. Average high temperatures ranged from the mid 70s to the mid 90s. Average low temperatures ranged from the low 60s to the mid 70s.

Crops

After dry conditions and limited rainfall for much of the state the past few weeks, plentiful rainfall occurred throughout the week that helped improve crop conditions. Most of the corn crop has tasseled and was in full pollination. Some peanut and corn producers reported that they are beginning to apply fungicide. Peanuts began to peg as planting across the state was nearly wrapped up. Early planted cotton began to square and planting continued closer to completion throughout the state. Thrips pressure was noted on cotton. Some cotton fields were being replanted following the dry conditions of the past several weeks. Hay conditions continued to improve, and grass began to grow again. Wheat harvest was wrapping up and some fields are being double cropped with late soybeans. Concerns about disease pressure increased as wet and humid conditions picked up in the state.

Livestock and Pastures

Livestock were generally in good condition and the much needed rainfall helped improve pasture conditions. Respiratory issues were noted causing problems for cattle producers.

Crop Progress for Week Ending 06/13/21

Crop stage	Prev year (percent)	Prev week (percent)	This week (percent)	5 Year avg (percent)
Blueberries - Harvested	87	89	91	81
Corn - Silking	71	43	62	72
Cotton - Planted	95	89	94	93
Cotton - Squaring	23	8	20	22
Hay - 1st Cutting	95	91	94	93
Oats - Harvested	85	79	92	83
Peaches - Harvested	49	30	39	44
Peanuts - Planted	97	93	96	96
Peanuts - Pegging	18	NA	11	13
Soybeans - Planted	80	78	86	76
Soybeans - Emerged	69	60	75	62
Soybeans - Blooming	1	NA	1	1
Tobacco - Topped	34	13	21	18
Winter wheat - Harvested ..	86	82	88	85

(NA) Not available.

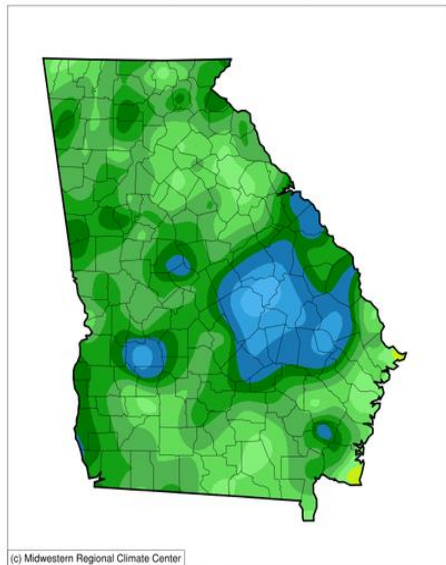
Conditions for Week Ending 06/13/21

Crop	Very poor (percent)	Poor (percent)	Fair (percent)	Good (percent)	Excellent (percent)
Cattle	0	4	27	61	8
Corn	2	6	26	51	15
Cotton	1	6	29	58	6
Pasture and range	2	11	31	50	6
Peaches	0	0	12	67	21
Peanuts	0	6	31	56	7
Soybeans	0	1	26	67	6
Tobacco	0	2	39	52	7

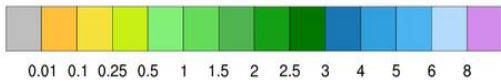
Soil Moisture for Week Ending 06/13/21

Topsoil	Previous week (percent)	This week (percent)
Very short	24	3
Short	44	22
Adequate	31	71
Surplus	1	4
Subsoil	Previous week (percent)	This week (percent)
Very short	13	3
Short	42	20
Adequate	43	75
Surplus	2	2

Accumulated Precipitation (in)
June 07, 2021 to June 13, 2021

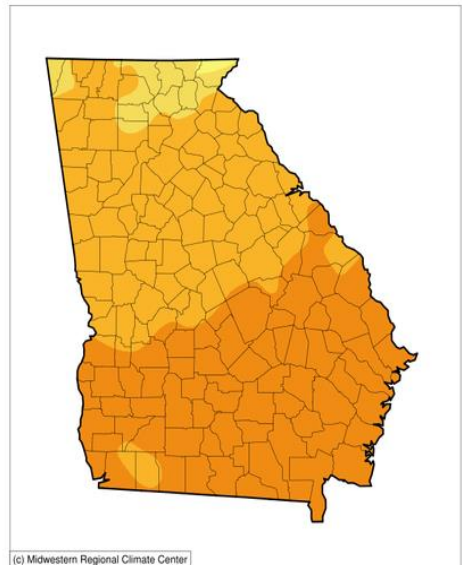


(c) Midwestern Regional Climate Center

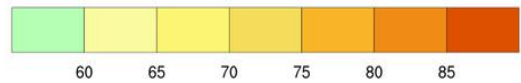


<http://mrcc.isws.illinois.edu/CLIMATE/>

Average Temperature (°F)
June 07, 2021 to June 13, 2021

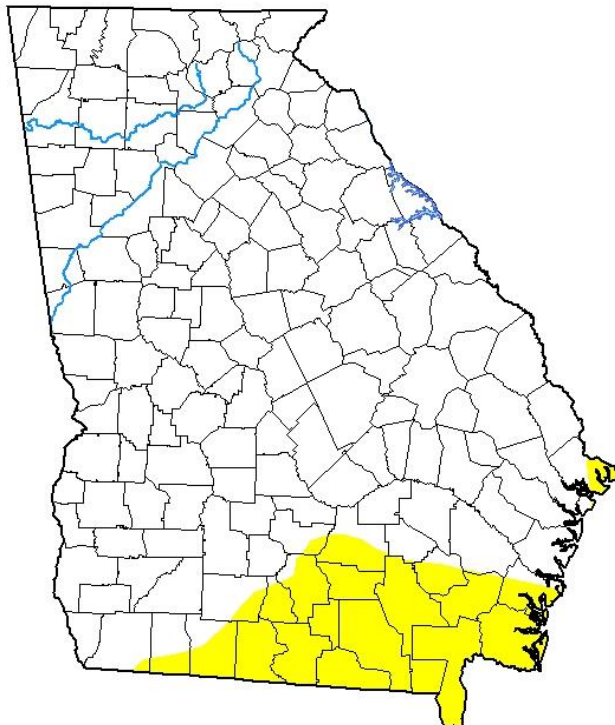


(c) Midwestern Regional Climate Center



<http://mrcc.isws.illinois.edu/CLIMATE/>

U.S. Drought Monitor Georgia



June 8, 2021

(Released Thursday, Jun. 10, 2021)

Valid 8 a.m. EDT

Drought Conditions (Percent Area)

	None	D0-D4	D1-D4	D2-D4	D3-D4	D4
Current	86.41	13.59	0.00	0.00	0.00	0.00
Last Week 06-01-2021	93.23	6.77	0.00	0.00	0.00	0.00
3 Months Ago 03-09-2021	90.34	9.66	0.00	0.00	0.00	0.00
Start of Calendar Year 12-29-2020	65.78	34.22	0.00	0.00	0.00	0.00
Start of Water Year 09-29-2020	97.20	2.80	0.00	0.00	0.00	0.00
One Year Ago 06-09-2020	100.00	0.00	0.00	0.00	0.00	0.00

Intensity:

- None
- D0 Abnormally Dry
- D1 Moderate Drought
- D2 Severe Drought
- D3 Extreme Drought
- D4 Exceptional Drought

The Drought Monitor focuses on broad-scale conditions. Local conditions may vary. For more information on the Drought Monitor, go to <https://droughtmonitor.unl.edu/About.aspx>

Author:

Brian Fuchs
National Drought Mitigation Center



droughtmonitor.unl.edu