



United States Department of Agriculture
National Agricultural Statistics Service
**Georgia Crop Progress
and Condition Report**



Cooperating with the Georgia Department of Agriculture and the Cooperative Extension Service
Southern Regional Field Office · 355 East Hancock Avenue, Suite 100 · Athens, GA 30601 · (706) 713-5400
www.nass.usda.gov

This report contains data collected each week from respondents across the state whose occupations provide them opportunities to discuss agricultural production with farmers in their counties as well as to make visual observations. We thank all who have contributed to this report.

July 12, 2021

Media Contact: Anthony Prillaman

General

According to the National Agricultural Statistics Service in Georgia, there were 4.3 days suitable for fieldwork for the week ending Sunday, July 11th, 2021. Precipitation ranged from 0.28 inches to 6.28 inches. Average high temperatures ranged from the high 70s to the low 90s. Average low temperatures ranged from the low 60s to the mid 70s.

Crops

Tropical Storm Elsa brought another week of rainfall around the state which has helped maintain good overall crop conditions. Corn is starting to mature, and the earliest fields are now entering black layer, but most are in the dent stage. Peanuts are continuing to peg and are beginning to set pods. However, heavy rain has prevented some growers from being able to apply fungicides. Soybeans are near full emergence across the state and early soybeans are already beginning to set pods. Producers are monitoring cotton for application of growth regulators to maintain desired plant growth as it is setting bolls. Rains continued to hinder farmers from getting a second cutting of hay complete and bailed with the sporadic rainy weather. Peach harvest has also been slowed by the rains, however production has been limited in some areas as a result of frosts from earlier this year. Blackberry and blueberry harvest are both nearly complete. Disease is a concern in many crops as conditions have continued to be warm and wet.

Livestock and Pastures

Livestock conditions continued to be good with the rainfall helping maintain the pasture and forage conditions.

Crop Progress for Week Ending 07/11/21

Crop stage	Prev year (percent)	Prev week (percent)	This week (percent)	5 Year avg (percent)
Corn - Silking.....	96	91	94	NA
Corn - Mature.....	19	2	12	19
Cotton - Squaring.....	77	67	77	76
Cotton - Setting Bolls.....	32	10	23	31
Hay - 2nd Cutting.....	73	39	55	58
Peaches - Harvested.....	85	67	75	78
Peanuts - Pegging.....	80	62	75	78
Soybeans - Emerged.....	95	91	95	93
Soybeans - Blooming.....	41	30	43	35
Soybeans - Setting Pods...	NA	2	16	NA
Tobacco - Topped.....	94	73	83	85
Tobacco - Cut.....	14	1	5	15

(NA) Not available.

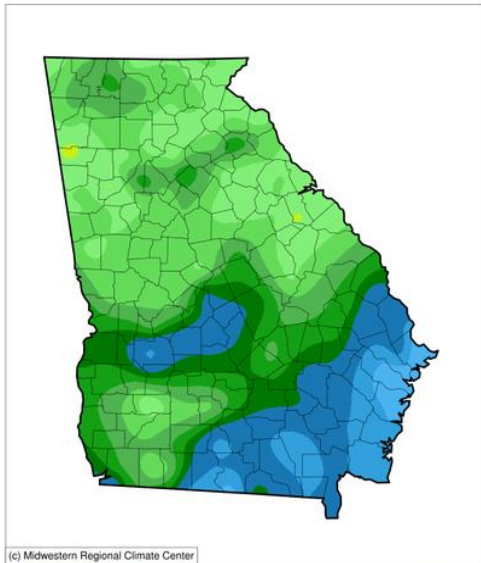
Conditions for Week Ending 07/11/21

Crop	Very poor (percent)	Poor (percent)	Fair (percent)	Good (percent)	Excellent (percent)
Cattle.....	1	3	25	61	10
Corn.....	1	2	23	61	13
Cotton.....	0	3	23	64	10
Pasture and range....	1	7	24	57	11
Peanuts.....	0	2	21	63	14
Soybeans.....	0	2	23	65	10
Tobacco.....	0	3	25	64	8

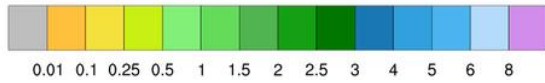
Soil Moisture for Week Ending 07/11/21

Topsoil	Previous week (percent)	This week (percent)
Very short.....	1	1
Short.....	10	5
Adequate.....	67	67
Surplus.....	22	27
Subsoil	Previous week (percent)	This week (percent)
Very short.....	1	1
Short.....	12	6
Adequate.....	77	69
Surplus.....	10	24

Accumulated Precipitation (in)
July 05, 2021 to July 11, 2021

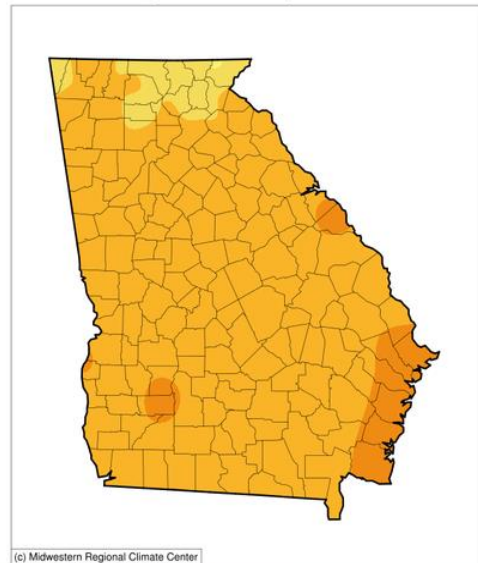


(c) Midwestern Regional Climate Center

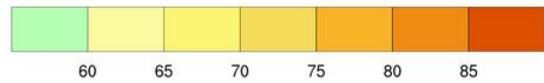


<http://mrcc.isws.illinois.edu/CLIMATE/>

Average Temperature (°F)
July 05, 2021 to July 11, 2021



(c) Midwestern Regional Climate Center



<http://mrcc.isws.illinois.edu/CLIMATE/>

U.S. Drought Monitor Georgia

July 6, 2021

(Released Thursday, Jul. 8, 2021)

Valid 8 a.m. EDT

Drought Conditions (Percent Area)

	None	D0-D4	D1-D4	D2-D4	D3-D4	D4
Current	100.00	0.00	0.00	0.00	0.00	0.00
Last Week 06-29-2021	100.00	0.00	0.00	0.00	0.00	0.00
3 Months Ago 04-06-2021	92.27	7.73	0.00	0.00	0.00	0.00
Start of Calendar Year 12-29-2020	65.78	34.22	0.00	0.00	0.00	0.00
Start of Water Year 09-29-2020	97.20	2.80	0.00	0.00	0.00	0.00
One Year Ago 07-07-2020	100.00	0.00	0.00	0.00	0.00	0.00

Intensity:

- None
- D0 Abnormally Dry
- D1 Moderate Drought
- D2 Severe Drought
- D3 Extreme Drought
- D4 Exceptional Drought

The Drought Monitor focuses on broad-scale conditions. Local conditions may vary. For more information on the Drought Monitor, go to <https://droughtmonitor.unl.edu/About.aspx>

Author:

Deborah Bathke
National Drought Mitigation Center



droughtmonitor.unl.edu

