



United States Department of Agriculture  
National Agricultural Statistics Service  
**Georgia Crop Progress  
and Condition Report**



Cooperating with the Georgia Department of Agriculture and the Cooperative Extension Service  
Southern Regional Field Office · 355 East Hancock Avenue, Suite 100 · Athens, GA 30601 · (800) 253-4419  
[www.nass.usda.gov](http://www.nass.usda.gov)

This report contains data collected each week from respondents across the state whose occupations provide them opportunities to discuss agricultural production with farmers in their counties as well as to make visual observations. We thank all who have contributed to this report.

June 13, 2022

Media Contact: Anthony Prillaman

**General**

According to the National Agricultural Statistics Service in Georgia, there were 6.1 days suitable for fieldwork for the week ending Sunday, June 12, 2022. Precipitation ranged from little rain to 8.4 inches. Average high temperatures ranged from the low 50s to the mid 90s. Average low temperatures ranged from the low 50s to the mid 70s.

**Crops**

Fewer showers and high temperatures last week have some producers concerned about soil moisture. Pivots ran during the week to reduce the impact of low soil moisture. Corn fields continued to tassel and silk and scouting for southern rust continued but no presence has been confirmed yet. Cotton and peanut planting should be completed soon. Soybeans progressed well and producers were busy preparing fields for planting behind small grains. Wheat and other small grains harvest continued with reports of a good yield.

**Livestock and Pastures**

Cattle remained in mostly good condition throughout the state. Heat and shade availability were concerns for producers last week. Grazing in some areas was reported to be very low. Pasture and range remained in mostly good condition.

**Crop Progress for Week Ending 06/12/22**

Crop stage	Prev year (percent)	Prev week (percent)	This week (percent)	5 Year avg (percent)
Blueberries - Harvested .....	91	89	94	85
Corn - Silking .....	59	37	61	68
Cotton - Planted .....	93	86	92	92
Cotton - Squaring .....	18	8	15	20
Hay - 1st Cutting .....	94	88	92	92
Oats - Harvested .....	90	63	83	83
Peaches - Harvested .....	38	27	40	43
Peanuts - Planted .....	96	92	97	95
Peanuts - Pegging .....	10	NA	5	11
Soybeans - Planted .....	85	69	80	76
Soybeans - Emerged .....	73	53	68	62
Tobacco - Topped .....	20	1	12	19
Winter wheat - Harvested ..	87	72	87	84

(NA) Not available

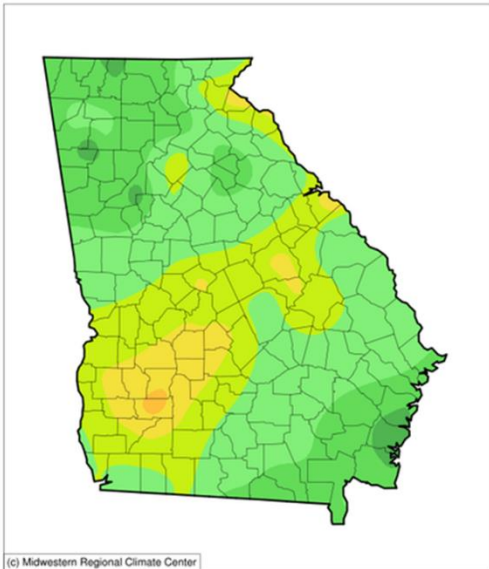
**Conditions for Week Ending 06/12/22**

Crop	Very poor (percent)	Poor (percent)	Fair (percent)	Good (percent)	Excellent (percent)
Cattle .....	1	4	23	61	11
Corn .....	1	5	24	60	10
Cotton .....	1	4	21	66	8
Pasture and range .....	3	10	35	45	7
Peaches .....	0	0	15	65	20
Peanuts .....	1	4	19	65	11
Soybeans .....	1	2	24	65	8
Tobacco .....	1	2	32	55	10

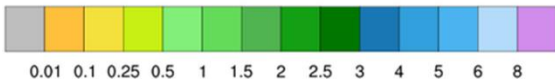
**Soil Moisture for Week Ending 06/12/22**

Topsoil	Previous week (percent)	This week (percent)
Very short .....	12	16
Short .....	27	33
Adequate .....	59	49
Surplus .....	2	2
Subsoil	Previous week (percent)	This week (percent)
Very short .....	8	13
Short .....	30	39
Adequate .....	60	46
Surplus .....	2	2

**Accumulated Precipitation (in)**  
June 06, 2022 to June 12, 2022



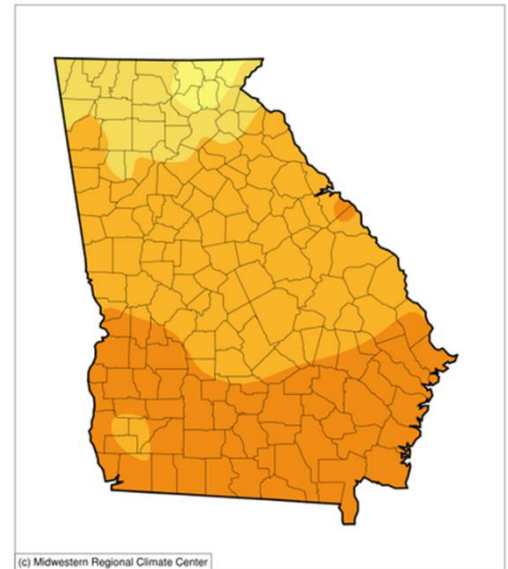
(c) Midwestern Regional Climate Center



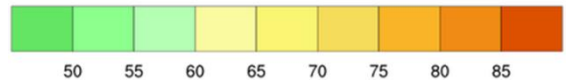
0.01 0.1 0.25 0.5 1 1.5 2 2.5 3 4 5 6 8

<http://mrcc.isws.illinois.edu/CLIMATE/>

**Average Temperature (°F)**  
June 06, 2022 to June 12, 2022



(c) Midwestern Regional Climate Center



50 55 60 65 70 75 80 85

<http://mrcc.isws.illinois.edu/CLIMATE/>

## U.S. Drought Monitor Georgia

**June 7, 2022**

(Released Thursday, Jun. 9, 2022)

Valid 8 a.m. EDT

Drought Conditions (Percent Area)

	None	D0-D4	D1-D4	D2-D4	D3-D4	D4
<b>Current</b>	67.28	32.72	11.60	3.31	0.00	0.00
<b>Last Week</b> 05-31-2022	67.76	32.24	9.92	3.31	0.00	0.00
<b>3 Months Ago</b> 03-08-2022	35.97	64.03	25.23	0.00	0.00	0.00
<b>Start of Calendar Year</b> 01-04-2022	97.01	2.99	0.00	0.00	0.00	0.00
<b>Start of Water Year</b> 09-28-2021	100.00	0.00	0.00	0.00	0.00	0.00
<b>One Year Ago</b> 06-08-2021	86.41	13.59	0.00	0.00	0.00	0.00

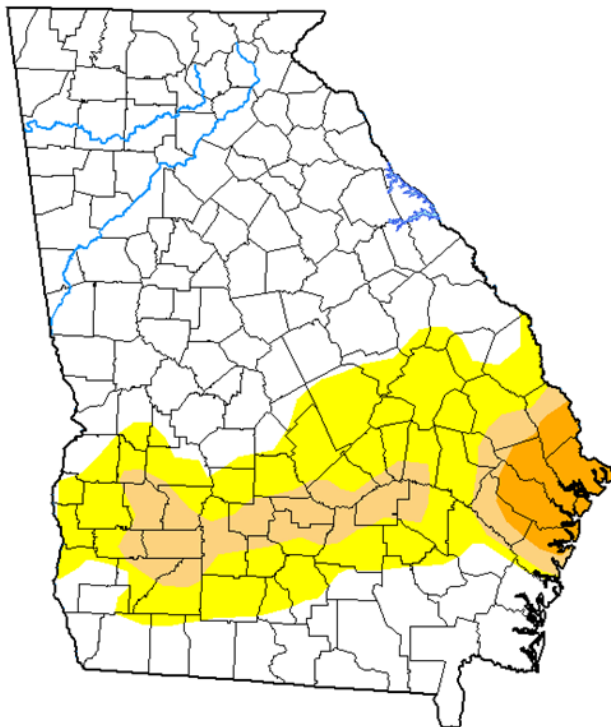
**Intensity:**

- None
- D0 Abnormally Dry
- D1 Moderate Drought
- D2 Severe Drought
- D3 Extreme Drought
- D4 Exceptional Drought

The Drought Monitor focuses on broad-scale conditions. Local conditions may vary. For more information on the Drought Monitor, go to <https://droughtmonitor.unl.edu/About.aspx>

**Author:**

Brad Pugh  
CPC/NOAA



[droughtmonitor.unl.edu](http://droughtmonitor.unl.edu)