



United States Department of Agriculture  
National Agricultural Statistics Service  
**Georgia Crop Progress  
and Condition Report**



Cooperating with the Georgia Department of Agriculture and the Cooperative Extension Service  
Southern Regional Field Office · 355 East Hancock Avenue, Suite 100 · Athens, GA 30601 · (800) 253-4419  
[www.nass.usda.gov](http://www.nass.usda.gov)

This report contains data collected each week from respondents across the state whose occupations provide them opportunities to discuss agricultural production with farmers in their counties as well as to make visual observations. We thank all who have contributed to this report.

September 12, 2022

Media Contact: Anthony Prillaman

**General**

According to the National Agricultural Statistics Service in Georgia, there were 4.8 days suitable for fieldwork for the week ending Sunday, September 11, 2022. Precipitation ranged from 0.2 inches to 4.8 inches of rain. Average high temperatures ranged from the high 70s to the high 80s. Average low temperatures ranged from the mid 60s to the low 70s.

**Crops**

Most of the state saw scattered showers which helped maintain adequate soil moisture levels. Parts of northwest Georgia reported major flooding which is anticipated to result in crop loss and poor livestock conditions. Consistent rain over the past few weeks has delayed harvesting activities and increased disease pressure in some areas.

Corn fields continued to be harvested, although many areas again reported field conditions to be too wet. Cotton bolls continued to open as boll rot was reported across southern Georgia due to the wet weather. Defoliant is anticipated to be applied this week to cotton if weather conditions permit. Early peanuts began being dug, although sunny weather conditions were reported to be needed to finish out the peanut crop. Soybeans continued to set pods and drop leaves. Caterpillar pests were reported to be an issue in eastern Georgia peanuts and soybeans. Wet conditions continued to delay hay harvest in many areas. Armyworms and bermudagrass stem maggots were reported in eastern Georgia hayfields.

**Livestock and Pastures**

Cattle remained in good condition throughout the state. Temperatures continued to decline which was beneficial for livestock. Pastures remained in mostly good to fair condition. Pasture growth was able to keep up with grazing for livestock.

**Crop Progress for Week Ending 09/11/22**

Crop stage	Prev year (percent)	Prev week (percent)	This week (percent)	5 Year avg (percent)
Corn - Harvested .....	76	70	76	85
Cotton - Bolls Opening.....	42	38	48	50
Hay - 3rd Cutting.....	58	45	53	64
Peanuts - Dug.....	3	1	4	6
Peanuts - Harvested.....	1	NA	1	2
Soybeans - Setting Pods ...	94	93	96	93
Soybeans - Drop Leaves ...	28	22	30	24
Tobacco - Harvested .....	91	85	90	92

(NA) Not available.

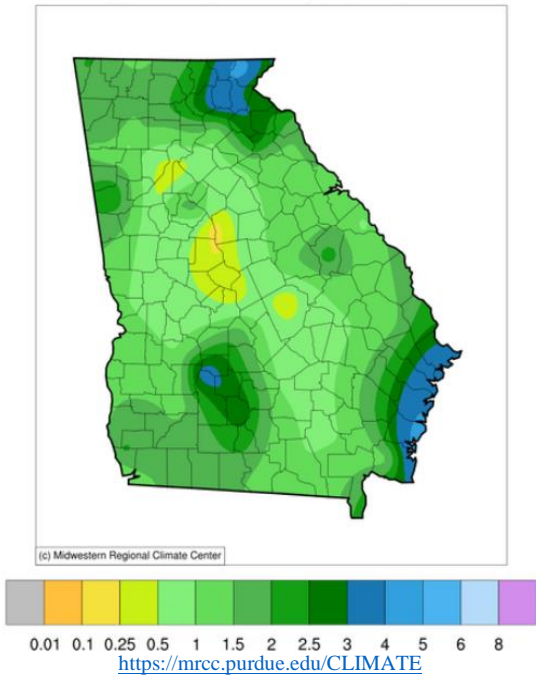
**Conditions for Week Ending 09/11/22**

Crop	Very poor (percent)	Poor (percent)	Fair (percent)	Good (percent)	Excellent (percent)
Cattle.....	1	4	23	64	8
Cotton.....	1	7	30	53	9
Pasture and range ....	3	8	31	52	6
Peanuts .....	1	5	25	55	14
Pecans .....	0	2	18	62	18
Soybeans .....	1	4	27	60	8

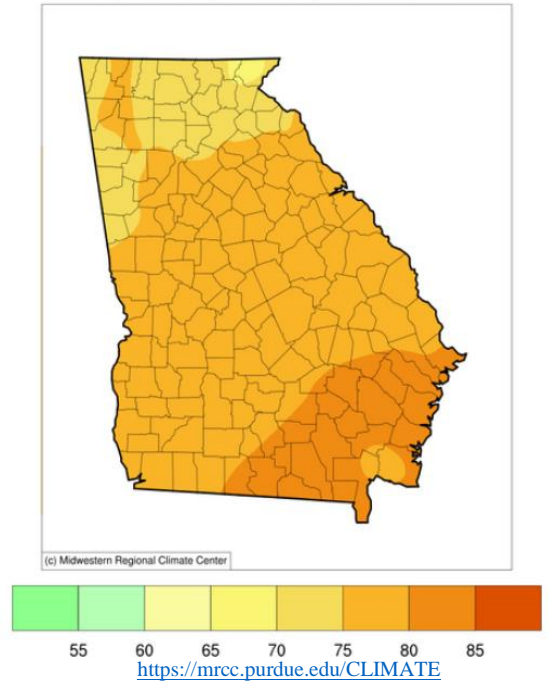
**Soil Moisture for Week Ending 09/11/22**

Topsoil	Previous week (percent)	This week (percent)
Very short.....	2	1
Short.....	9	6
Adequate .....	75	75
Surplus .....	14	18
Subsoil	Previous week (percent)	This week (percent)
Very short.....	2	2
Short.....	9	9
Adequate .....	74	72
Surplus .....	15	17

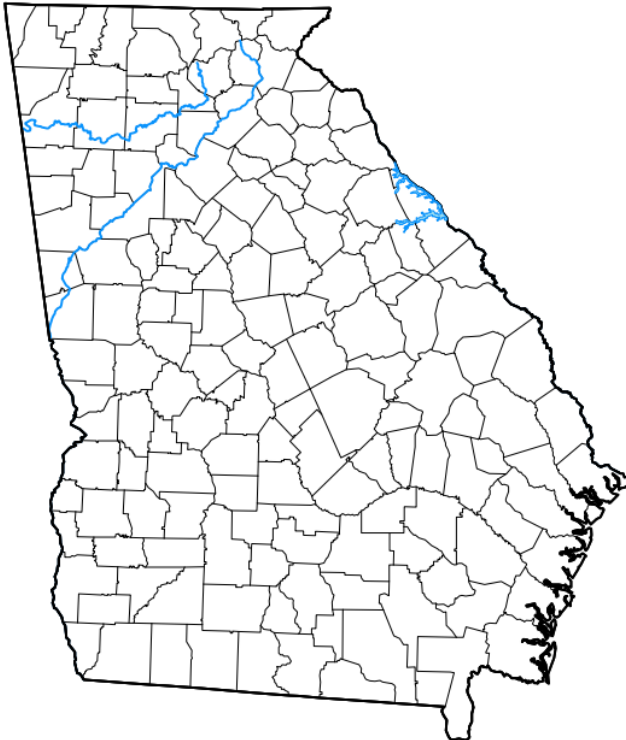
**Accumulated Precipitation (in)**  
September 05, 2022 to September 11, 2022



**Average Temperature (°F)**  
September 05, 2022 to September 11, 2022



## U.S. Drought Monitor Georgia



**September 6, 2022**  
(Released Thursday, Sep. 8, 2022)  
Valid 8 a.m. EDT

Drought Conditions (Percent Area)

	None	D0-D4	D1-D4	D2-D4	D3-D4	D4
<b>Current</b>	100.00	0.00	0.00	0.00	0.00	0.00
<b>Last Week</b> <i>08-30-2022</i>	99.92	0.08	0.00	0.00	0.00	0.00
<b>3 Months Ago</b> <i>06-07-2022</i>	67.28	32.72	11.60	3.31	0.00	0.00
<b>Start of Calendar Year</b> <i>01-04-2022</i>	97.01	2.99	0.00	0.00	0.00	0.00
<b>Start of Water Year</b> <i>09-28-2021</i>	100.00	0.00	0.00	0.00	0.00	0.00
<b>One Year Ago</b> <i>09-07-2021</i>	98.59	1.41	0.00	0.00	0.00	0.00

**Intensity:**

- None
- D0 Abnormally Dry
- D1 Moderate Drought
- D2 Severe Drought
- D3 Extreme Drought
- D4 Exceptional Drought

The Drought Monitor focuses on broad-scale conditions. Local conditions may vary. For more information on the Drought Monitor, go to <https://droughtmonitor.unl.edu/About.aspx>

**Author:**

David Simeral  
Western Regional Climate Center



[droughtmonitor.unl.edu](https://droughtmonitor.unl.edu)