



United States Department of Agriculture
National Agricultural Statistics Service
**Georgia Crop Progress
and Condition Report**



Cooperating with the Georgia Department of Agriculture and the Cooperative Extension Service
Southern Regional Field Office · 355 East Hancock Avenue, Suite 100 · Athens, GA 30601 · (800) 253-4419
www.nass.usda.gov

This report contains data collected each week from respondents across the state whose occupations provide them opportunities to discuss agricultural production with farmers in their counties as well as to make visual observations. We thank all who have contributed to this report.

September 26, 2022

Media Contact: Anthony Prillaman

General

According to the National Agricultural Statistics Service in Georgia, there were 6.7 days suitable for fieldwork for the week ending Sunday, September 25, 2022. Precipitation ranged from no rain to 0.7 inches of rain. Average high temperatures ranged from the high 70s to the low 90s. Average low temperatures ranged from the mid 50s to the low 70s.

Crops

Minimal rainfall and temperatures continuing to cool down across the state allowed farmers ample time for fieldwork. This made for ideal harvesting weather for many crops. Farmers were keeping a watchful eye on the development of Hurricane Ian and its possible impact this upcoming week.

Corn fields continued to be harvested and neared completion given ideal weather conditions. Cotton bolls continued to open as early planted fields were being harvested. Many fields were able to be defoliated given the clear and dry weather throughout the week. Some producers in southwest Georgia reported that they delayed applying defoliant due to the anticipated hurricane this upcoming week. Peanuts continued to be dug and harvested as fields were able to dry down. Dry soils in central Georgia made it difficult to dig peanuts as additional rain is needed to effectively dig. Some late-planted peanuts and soybeans were sprayed with insecticides to control caterpillars in central Georgia. Soybeans continued dropping leaves as harvest was beginning to ramp up. Growers were able to take advantage of dry field conditions for a second week in a row to catch up on hay harvest. Some small grains began being planted, although dry weather conditions delayed many from being planted.

Livestock and Pastures

Cattle remained in good condition throughout the state. Temperatures continued to decline which was beneficial for livestock. Pastures remained in mostly good to fair condition. Growth of pastures slowed due to dry weather over the last two weeks.

Crop Progress for Week Ending 09/25/22

Crop stage	Prev year	Prev week	This week	5 Year avg
	(percent)	(percent)	(percent)	(percent)
Corn - Harvested.....	89	88	93	94
Cotton - Bolls Opening.....	65	60	74	74
Cotton - Harvested.....	2	2	3	6
Hay - 3rd Cutting.....	77	66	78	81
Oats - Planted.....	1	NA	1	1
Peanuts - Dug.....	15	10	25	24
Peanuts - Harvested.....	6	4	12	13
Rye - Planted.....	1	NA	1	3
Soybeans - Dropping Leaves	49	40	52	49
Soybeans - Harvested.....	6	4	10	6
Tobacco - Harvested.....	98	94	96	98

(NA) Not available.

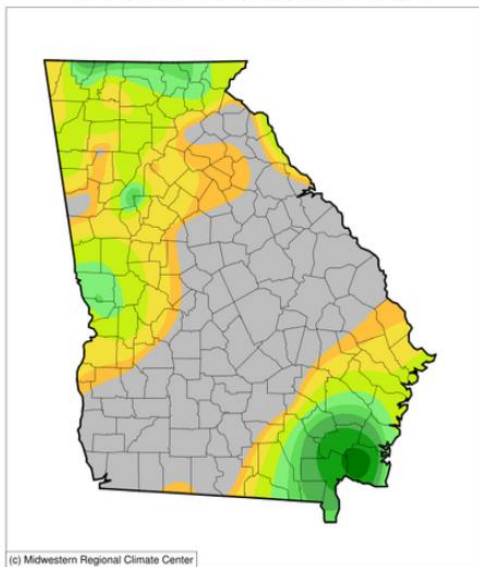
Conditions for Week Ending 09/25/22

Crop	Very poor	Poor	Fair	Good	Excellent
	(percent)	(percent)	(percent)	(percent)	(percent)
Cattle.....	1	4	22	62	11
Cotton.....	1	8	30	48	13
Pasture and range....	2	6	40	45	7
Peanuts.....	1	6	24	57	12
Pecans.....	0	3	17	65	15
Soybeans.....	3	5	24	55	13

Soil Moisture for Week Ending 09/25/22

Topsoil	Previous week	This week
	(percent)	(percent)
Very short.....	4	10
Short.....	14	38
Adequate.....	77	47
Surplus.....	5	5
Subsoil	Previous week	This week
	(percent)	(percent)
Very short.....	4	6
Short.....	13	32
Adequate.....	75	59
Surplus.....	8	3

Accumulated Precipitation (in)
September 19, 2022 to September 25, 2022



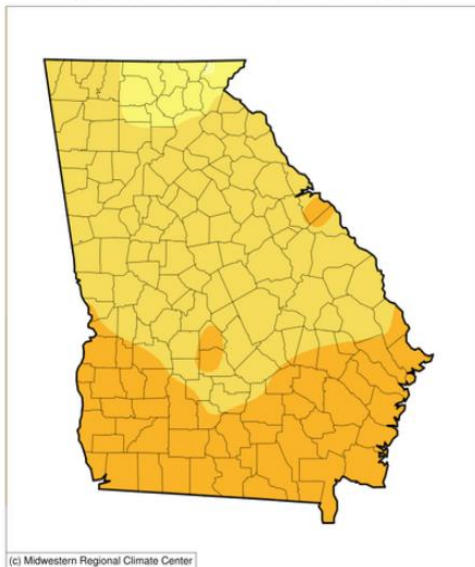
(c) Midwestern Regional Climate Center



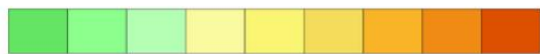
0.01 0.02 0.05 0.1 0.15 0.2 0.3 0.5 0.75 1 1.25 1.5 1.75

<https://mrcc.purdue.edu/CLIMATE>

Average Temperature (°F)
September 19, 2022 to September 25, 2022



(c) Midwestern Regional Climate Center



50 55 60 65 70 75 80 85

<https://mrcc.purdue.edu/CLIMATE>

U.S. Drought Monitor Georgia

September 20, 2022

(Released Thursday, Sep. 22, 2022)

Valid 8 a.m. EDT

Drought Conditions (Percent Area)

	None	D0-D4	D1-D4	D2-D4	D3-D4	D4
Current	98.63	1.37	0.00	0.00	0.00	0.00
Last Week 09-13-2022	100.00	0.00	0.00	0.00	0.00	0.00
3 Months Ago 06-21-2022	16.51	83.49	25.92	3.31	0.00	0.00
Start of Calendar Year 01-04-2022	97.01	2.99	0.00	0.00	0.00	0.00
Start of Water Year 09-28-2021	100.00	0.00	0.00	0.00	0.00	0.00
One Year Ago 09-21-2021	100.00	0.00	0.00	0.00	0.00	0.00

Intensity:

- None
- D0 Abnormally Dry
- D1 Moderate Drought
- D2 Severe Drought
- D3 Extreme Drought
- D4 Exceptional Drought

The Drought Monitor focuses on broad-scale conditions. Local conditions may vary. For more information on the Drought Monitor, go to <https://droughtmonitor.unl.edu/About.aspx>

Author:

Richard Heim
NCEI/NOAA



droughtmonitor.unl.edu

