



United States Department of Agriculture  
National Agricultural Statistics Service  
**Georgia Crop Progress  
and Condition Report**



Cooperating with the Georgia Department of Agriculture and the Cooperative Extension Service  
Southern Regional Field Office · 355 East Hancock Avenue, Suite 100 · Athens, GA 30601 · (800) 253-4419  
[www.nass.usda.gov](http://www.nass.usda.gov)

This report contains data collected each week from respondents across the state whose occupations provide them opportunities to discuss agricultural production with farmers in their counties as well as to make visual observations. We thank all who have contributed to this report.

April 17, 2023

Media Contact: Anthony Prillaman

**General**

According to the National Agricultural Statistics Service in Georgia, there were 5.1 days suitable for fieldwork for the week ending Sunday, April 16, 2023. Precipitation ranged from trace amounts to 2.1 inches of rain. Average high temperatures ranged from the low 70s to the low 80s. Average low temperatures ranged from the low 40s to the high 50s.

**Crops**

Corn continued to be planted across the state and emerging in many areas. Some corn fields in northern Georgia were just now being planted as soil temperatures were beginning to warm up. Some early planted corn fields in southern Georgia were around the V5 growth stage and having their first post emergence herbicide applied. Producers continued preparing to plant cotton and peanuts in the coming weeks, as weather permits. Peach blooming began to near completion with some peach producers reporting a lost crop due to the freeze damage from mid-March. Wheat, oats, and rye were heading out and were treated with fungicide applications during the week. Hessian Fly infestations were reported to be an issue in southwest Georgia small grains. Harvest of Vidalia onions continued to be wide open and will continue for the next few weeks.

**Livestock and Pastures**

Cattle and pasture and ranges were in good to fair condition throughout the state. Continued rains and cool weather created optimal conditions for cool season forages to produce well and provided much needed relief from feeding winter hay to livestock. High soil moisture levels in eastern Georgia were noted to be a concern for livestock producers.

**Crop Progress for Week Ending 04/16/23**

Crop stage	Prev year (percent)	Prev week (percent)	This week (percent)	5 Year avg (percent)
Blueberries - Harvested .....	9	4	14	10
Corn - Planted .....	73	64	77	80
Corn - Emerged .....	54	46	62	62
Cotton - Planted .....	1	0	1	3
Hay - First Cutting .....	3	NA	1	4
Onions - Harvested .....	33	13	29	18
Peaches - Blooming .....	95	89	94	94
Tobacco - Transplanted .....	41	28	44	49
Winter wheat - Headed .....	72	65	78	75

(NA) Not available.

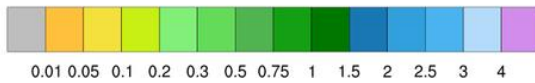
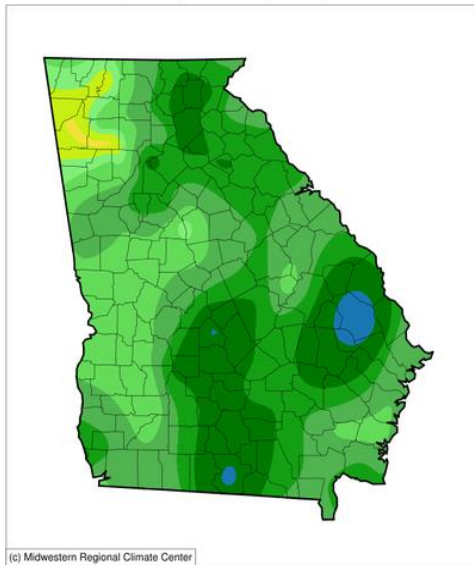
**Conditions for Week Ending 04/16/23**

Crop	Very poor (percent)	Poor (percent)	Fair (percent)	Good (percent)	Excellent (percent)
Blueberries .....	0	0	8	83	9
Cattle .....	2	5	24	54	15
Corn .....	0	4	30	58	8
Oats .....	1	5	25	66	3
Onions .....	0	1	29	66	4
Pasture and range .....	2	7	33	50	8
Peaches .....	6	4	19	71	0
Winter wheat .....	2	4	22	63	9

**Soil Moisture for Week Ending 04/16/23**

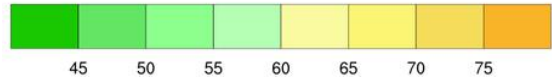
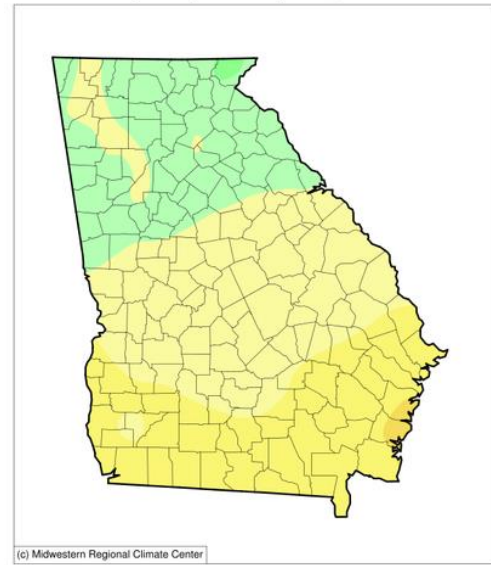
Topsoil	Previous week (percent)	This week (percent)
Very short .....	2	1
Short .....	5	5
Adequate .....	74	76
Surplus .....	19	18
Subsoil	Previous week (percent)	This week (percent)
Very short .....	2	2
Short .....	5	4
Adequate .....	77	82
Surplus .....	16	12

**Accumulated Precipitation (in)**  
April 10, 2023 to April 16, 2023



<https://mrcc.purdue.edu/CLIMATE>

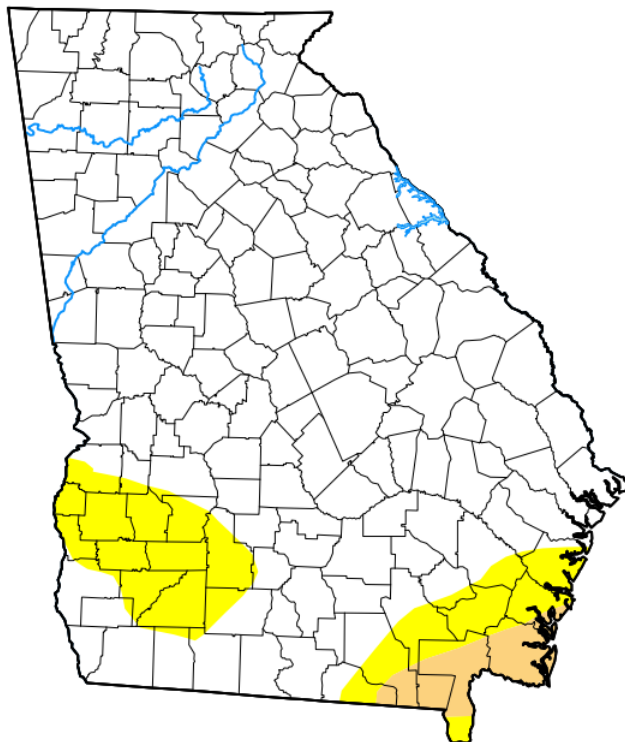
**Average Temperature (°F)**  
April 10, 2023 to April 16, 2023



<https://mrcc.purdue.edu/CLIMATE>

## U.S. Drought Monitor Georgia

**April 11, 2023**  
(Released Thursday, Apr. 13, 2023)  
Valid 8 a.m. EDT



*Drought Conditions (Percent Area)*

	None	D0-D4	D1-D4	D2-D4	D3-D4	D4
<b>Current</b>	85.71	14.29	2.81	0.00	0.00	0.00
<b>Last Week</b> <i>04-04-2023</i>	83.44	16.56	2.81	0.00	0.00	0.00
<b>3 Months Ago</b> <i>01-10-2023</i>	51.75	48.25	35.63	4.09	0.00	0.00
<b>Start of Calendar Year</b> <i>01-03-2023</i>	46.36	53.64	28.04	4.81	0.00	0.00
<b>Start of Water Year</b> <i>09-27-2022</i>	76.20	23.80	0.00	0.00	0.00	0.00
<b>One Year Ago</b> <i>04-12-2022</i>	54.28	45.72	17.11	0.00	0.00	0.00

**Intensity:**

- None
- D0 Abnormally Dry
- D1 Moderate Drought
- D2 Severe Drought
- D3 Extreme Drought
- D4 Exceptional Drought

*The Drought Monitor focuses on broad-scale conditions. Local conditions may vary. For more information on the Drought Monitor, go to <https://droughtmonitor.unl.edu/About.aspx>*

**Author:**

David Simeral  
Western Regional Climate Center



[droughtmonitor.unl.edu](https://droughtmonitor.unl.edu)