



United States Department of Agriculture  
National Agricultural Statistics Service  
**Georgia Crop Progress  
and Condition Report**



Cooperating with the Georgia Department of Agriculture and the Cooperative Extension Service  
Southern Regional Field Office · 355 East Hancock Avenue, Suite 100 · Athens, GA 30601 · (800) 253-4419  
[www.nass.usda.gov](http://www.nass.usda.gov)

This report contains data collected each week from respondents across the state whose occupations provide them opportunities to discuss agricultural production with farmers in their counties as well as to make visual observations. We thank all who have contributed to this report.

May 1, 2023

Media Contact: Anthony Prillaman

**General**

According to the National Agricultural Statistics Service in Georgia, there were 5.0 days suitable for fieldwork for the week ending Sunday, April 30, 2023. Precipitation ranged from 0.5 inches to 3.8 inches of rain. Average high temperatures ranged from the mid 60s to the low 80s. Average low temperatures ranged from the mid 40s to the low 60s.

**Crops**

Most of the state saw scattered showers and mild temperatures during the week. This slowed down planting and fieldwork in some areas. Corn continued to be planted across the state and emerging in many areas. Hail damage to corn was reported in southwest Georgia. Most of the corn fields affected were between the V3 and V6 growth stages and are young enough that they should be able to grow back if the growing point was not bruised too bad from the hail impact. These fields are not expected to be replanted. Cotton, peanut, and soybean planting began in some areas during the week, although many producers are waiting until temperatures warm up. Harvest of Vidalia onions continued to be wide open and began to near completion. Tobacco transplanting continued to progress. Wheat and oat fields in southwest Georgia were also affected by the hailstorm. Some acres were reported to have blown over from the storm with a few wheat fields losing over half of the kernels. Those fields are expected to have reduced yields as well as lower test weights.

**Livestock and Pastures**

Cattle and pasture and ranges were in good to fair condition throughout the state. Some cattle in central Georgia began being treated for flies. Pastures were green, although many were experiencing a surplus of moisture due to the wet weather conditions.

**Crop Progress for Week Ending 04/30/23**

Crop stage	Prev year (percent)	Prev week (percent)	This week (percent)	5 Year avg (percent)
Blueberries - Harvested .....	32	20	39	31
Corn - Planted .....	91	86	91	93
Corn - Emerged .....	83	76	85	85
Cotton - Planted .....	10	4	8	12
Hay - First Cutting .....	24	15	27	28
Oats - Harvested .....	1	NA	1	1
Onions - Harvested .....	69	47	67	48
Peanuts - Planted .....	10	2	6	10
Soybeans - Planted .....	7	3	9	7
Tobacco - Transplanted .....	90	71	87	88
Winter wheat - Headed .....	89	87	94	92

(NA)Not available.

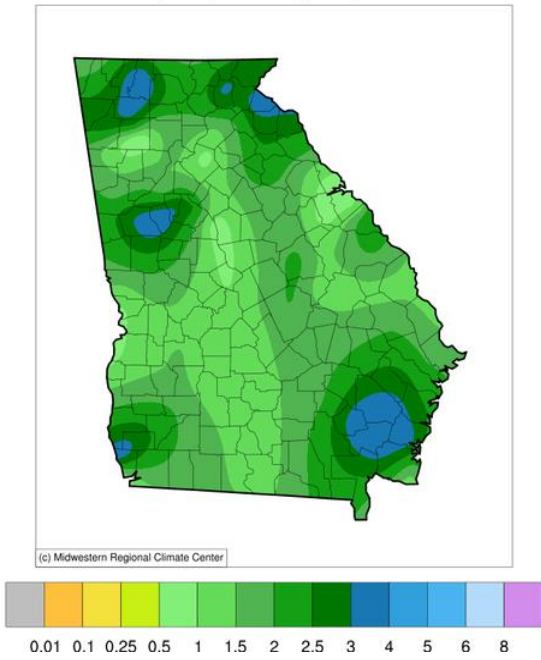
**Conditions for Week Ending 04/30/23**

Crop	Very poor (percent)	Poor (percent)	Fair (percent)	Good (percent)	Excellent (percent)
Blueberries .....	1	1	8	82	8
Cattle .....	2	5	23	56	14
Corn .....	2	5	24	60	9
Oats .....	1	5	25	65	4
Onions .....	0	1	28	66	5
Pasture and range .....	2	7	32	50	9
Peaches .....	11	13	23	53	0
Tobacco .....	0	1	24	72	3
Winter wheat .....	2	5	27	57	9

**Soil Moisture for Week Ending 04/30/23**

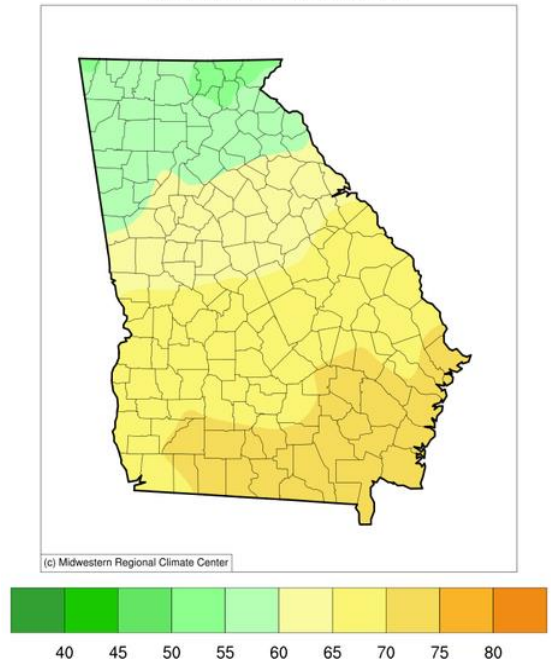
Topsoil	Previous week (percent)	This week (percent)
Very short .....	5	1
Short .....	17	8
Adequate .....	70	74
Surplus .....	8	17
Subsoil	Previous week (percent)	This week (percent)
Very short .....	5	1
Short .....	17	8
Adequate .....	72	80
Surplus .....	6	11

**Accumulated Precipitation (in)**  
April 24, 2023 to April 30, 2023



<https://mrcc.purdue.edu/CLIMATE>

**Average Temperature (°F)**  
April 24, 2023 to April 30, 2023



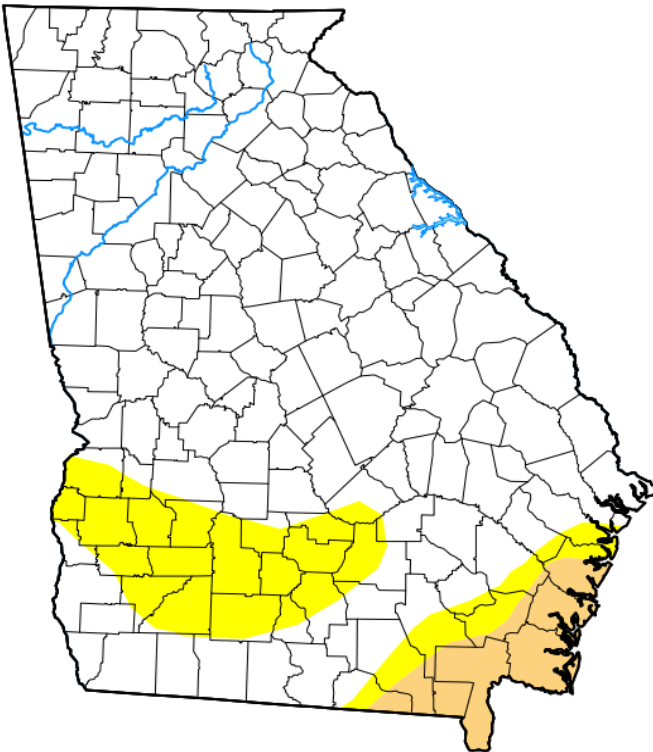
<https://mrcc.purdue.edu/CLIMATE>

## U.S. Drought Monitor Georgia

**April 25, 2023**

(Released Thursday, Apr. 27, 2023)

Valid 8 a.m. EDT



*Drought Conditions (Percent Area)*

	None	D0-D4	D1-D4	D2-D4	D3-D4	D4
<b>Current</b>	81.51	18.49	5.10	0.00	0.00	0.00
<b>Last Week</b> 04-18-2023	90.46	9.54	2.99	0.00	0.00	0.00
<b>3 Months Ago</b> 01-24-2023	66.79	33.21	19.35	0.00	0.00	0.00
<b>Start of Calendar Year</b> 01-03-2023	46.36	53.64	28.04	4.81	0.00	0.00
<b>Start of Water Year</b> 09-27-2022	76.20	23.80	0.00	0.00	0.00	0.00
<b>One Year Ago</b> 04-26-2022	56.45	43.55	18.46	0.00	0.00	0.00

**Intensity:**

- None
- D0 Abnormally Dry
- D1 Moderate Drought
- D2 Severe Drought
- D3 Extreme Drought
- D4 Exceptional Drought

The Drought Monitor focuses on broad-scale conditions. Local conditions may vary. For more information on the Drought Monitor, go to <https://droughtmonitor.unl.edu/About.aspx>

**Author:**

Richard Tinker  
CPC/NOAA/NWS/NCEP



[droughtmonitor.unl.edu](https://droughtmonitor.unl.edu)