



United States Department of Agriculture
National Agricultural Statistics Service
**Georgia Crop Progress
and Condition Report**



Cooperating with the Georgia Department of Agriculture and the Cooperative Extension Service
Southern Regional Field Office · 355 East Hancock Avenue, Suite 100 · Athens, GA 30601 · (800) 253-4419
www.nass.usda.gov

This report contains data collected each week from respondents across the state whose occupations provide them opportunities to discuss agricultural production with farmers in their counties as well as to make visual observations. We thank all who have contributed to this report.

September 5, 2023

Media Contact: Anthony Prillaman

General

According to the National Agricultural Statistics Service in Georgia, there were 4.6 days suitable for fieldwork for the week ending Sunday, September 3, 2023. Precipitation ranged from 0.3 inches to 11.3 inches. Average high temperatures ranged from the low 80s to the high 80s. Average low temperatures ranged from the mid 60s to the mid 70s.

Crops

Hurricane Idalia brought much needed rains, helping to replenish the dry soil conditions. Most of Georgia noted minimal damage from the hurricane, however southern Georgia did have more severe damage. Pecan trees were blown down and cotton fields were tangled from the winds in the path of the hurricane. Farmers were also delayed getting back into fields due to the wet conditions.

Producers made good progress harvesting corn before the hurricane last week as later planted fields finished maturing. Some corn was reported to have been laid flat from the strong winds. Cotton finished setting bolls as bolls continued to open with fields expected to be defoliated in the next few weeks. The recent wet conditions were noted to have caused concern for boll rot. Soybean blooming completed as fields were setting pods and dropping leaves.

Livestock and Pastures

Cattle and pastures were in good to fair condition. The rain and cooler temperatures helped improve both cattle and pasture conditions.

Crop Progress for Week Ending 09/03/23

Crop stage	Prev year	Prev week	This week	5 Year avg
	(percent)	(percent)	(percent)	(percent)
Corn - Mature	98	92	95	98
Corn - Harvested	68	53	68	72
Cotton - Setting Bolls	97	94	96	98
Cotton - Bolls Opening	36	15	25	34
Hay - 3rd Cutting	43	20	38	49
Peanuts - Dug	1	NA	1	1
Soybeans - Blooming	99	93	97	98
Soybeans - Setting Pods ...	93	77	82	91
Soybeans - Drop Leaves ...	20	8	20	15
Tobacco - Harvested	84	86	90	85

(NA) Not available.

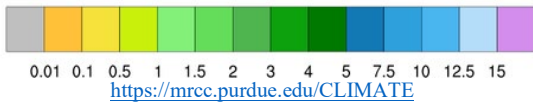
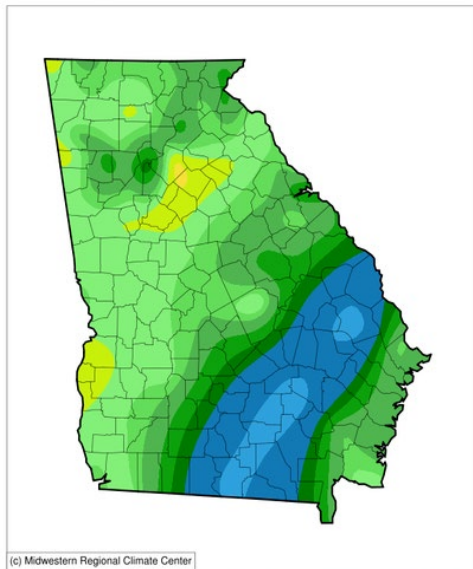
Conditions for Week Ending 09/03/23

Crop	Very poor	Poor	Fair	Good	Excellent
	(percent)	(percent)	(percent)	(percent)	(percent)
Cattle	1	5	26	56	12
Cotton	1	6	34	51	8
Pasture and range	3	9	34	46	8
Peanuts	1	6	34	51	8
Pecans	2	5	33	52	8
Soybeans	1	4	27	62	6

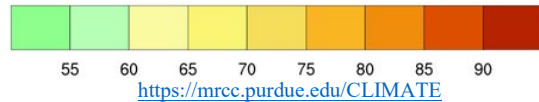
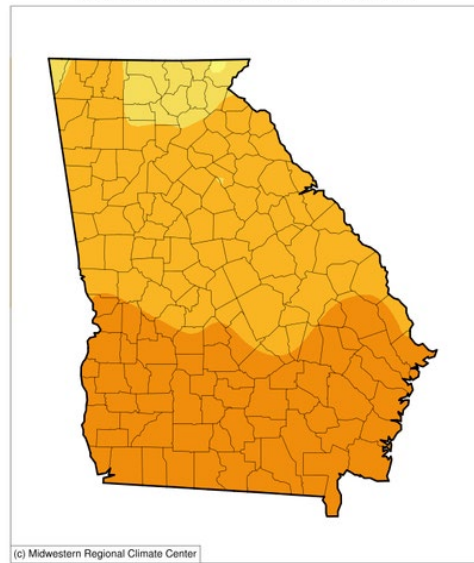
Soil Moisture for Week Ending 09/03/23

Topsoil	Previous week	This week
	(percent)	(percent)
Very short	18	2
Short	40	22
Adequate	41	59
Surplus	1	17
Subsoil	Previous week	This week
	(percent)	(percent)
Very short	13	3
Short	44	25
Adequate	42	62
Surplus	1	10

Accumulated Precipitation (in)
August 28, 2023 to September 03, 2023

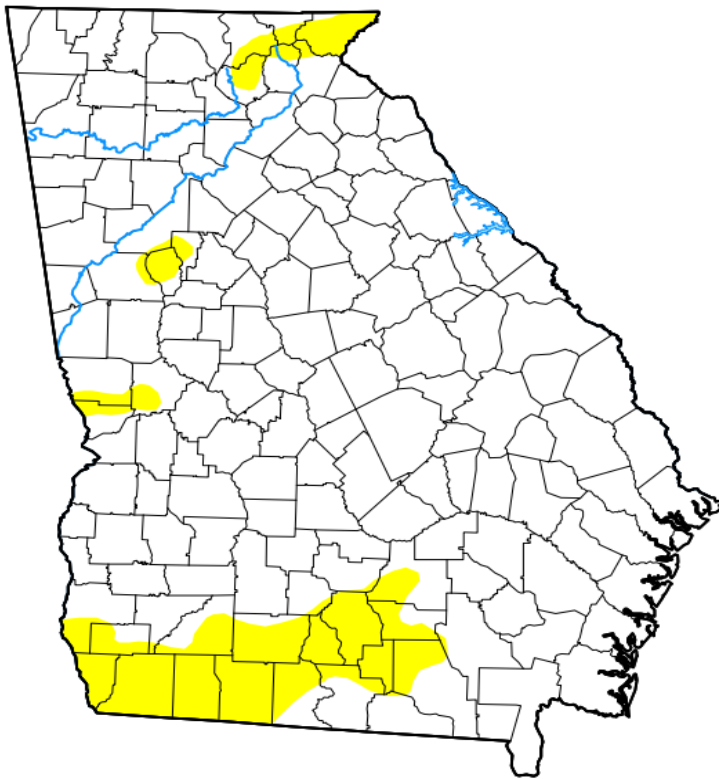


Average Temperature (°F)
August 28, 2023 to September 03, 2023



U.S. Drought Monitor Georgia

August 29, 2023
(Released Thursday, Aug. 31, 2023)
Valid 8 a.m. EDT



Drought Conditions (Percent Area)

	None	D0-D4	D1-D4	D2-D4	D3-D4	D4
Current	88.99	11.01	0.00	0.00	0.00	0.00
Last Week 09-22-2023	89.01	10.99	0.00	0.00	0.00	0.00
3 Months Ago 05-30-2023	95.36	4.64	0.00	0.00	0.00	0.00
Start of Calendar Year 01-03-2023	46.36	53.64	28.04	4.81	0.00	0.00
Start of Water Year 09-27-2022	76.20	23.80	0.00	0.00	0.00	0.00
One Year Ago 08-30-2022	99.92	0.08	0.00	0.00	0.00	0.00

Intensity:

- None
- D0 Abnormally Dry
- D1 Moderate Drought
- D2 Severe Drought
- D3 Extreme Drought
- D4 Exceptional Drought

The Drought Monitor focuses on broad-scale conditions. Local conditions may vary. For more information on the Drought Monitor, go to <https://droughtmonitor.unl.edu/About.aspx>

Author:

David Simeral
Western Regional Climate Center



droughtmonitor.unl.edu