



United States Department of Agriculture  
National Agricultural Statistics Service  
**Georgia Crop Progress  
and Condition Report**



Cooperating with the Georgia Department of Agriculture and the Cooperative Extension Service  
Southern Regional Field Office · 355 East Hancock Avenue, Suite 100 · Athens, GA 30601 · (800) 253-4419  
[www.nass.usda.gov](http://www.nass.usda.gov)

This report contains data collected each week from respondents across the state whose occupations provide them opportunities to discuss agricultural production with farmers in their counties as well as to make visual observations. We thank all who have contributed to this report.

August 19, 2024

Media Contact: Anthony Prillaman

**General**

According to the National Agricultural Statistics Service in Georgia, there were 6.1 days suitable for fieldwork for the week ending Sunday, August 18, 2024. Precipitation totals from available reporting stations ranged from no rain to over 4 inches of rain throughout the week. Average high temperatures ranged from the high 70s to the high 90s. Average low temperatures ranged from the low 60s to the mid 70s.

**Crops**

It was a dry week for most of the state last week, with only the northern and far southeastern regions of the state receiving significant precipitation. Drier conditions allowed areas impacted by Tropical Storm Debby to dry out, although there were concerns that more moisture would be needed in those areas soon. Corn harvest began to pick up steam as operators took advantage of the favorable conditions throughout the week. Cotton fields continued to be scouted for insects and diseases as bolls began to open in more fields throughout the state. Reporters noted some cotton fields suffered wind damage from the storm and that disease concerns were rising in the crop. Many peanut producers were busy spraying fields with fungicides throughout the week as disease pressure was mentioned to be extremely high in peanuts as well. Reporters noted instances of white mold being observed in some peanut fields. Tobacco fields continued to struggle after the storm, with significant damage reported in some areas. Armyworms continued to be a significant problem for many operators across the state, with hay operators particularly impacted.

**Livestock and Pastures**

Cattle were in mostly good to fair condition, while pastures were in mostly fair to good condition. Calving season started to get underway for many cattle operations. Concerns about pasture fields continued due to armyworm damage in many areas.

**Crop Progress for Week Ending 8/18/24**

Crop stage	Prev year	Prev week	This week	5 Year avg
	(percent)	(percent)	(percent)	(percent)
Corn - Mature .....	82	80	89	87
Corn - Harvested .....	33	15	30	37
Cotton - Setting Bolls .....	87	78	88	90
Cotton - Bolls Opening .....	7	3	7	11
Hay - 2nd Cutting .....	93	87	92	94
Soybeans - Blooming .....	88	90	93	91
Soybeans - Setting Pods ...	66	71	79	74
Soybeans - Drop Leaves ...	1	NA	6	0

(NA) Not Available

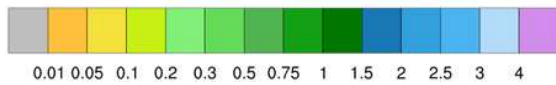
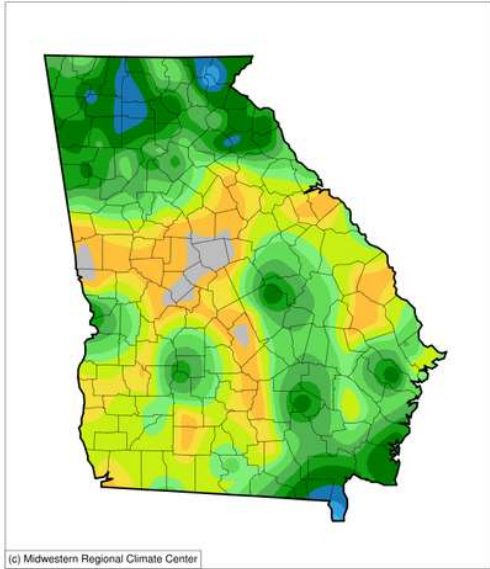
**Conditions for Week Ending 8/18/24**

Crop	Very poor	Poor	Fair	Good	Excellent
	(percent)	(percent)	(percent)	(percent)	(percent)
Cattle .....	3	8	26	55	8
Corn .....	7	12	24	50	7
Cotton .....	2	9	29	52	8
Pasture and range .....	11	21	35	31	2
Peanuts .....	2	6	27	57	8
Soybeans .....	1	6	29	59	5

**Soil Moisture for Week Ending 8/18/24**

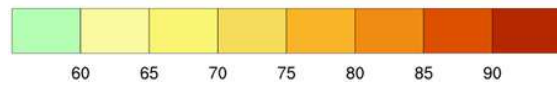
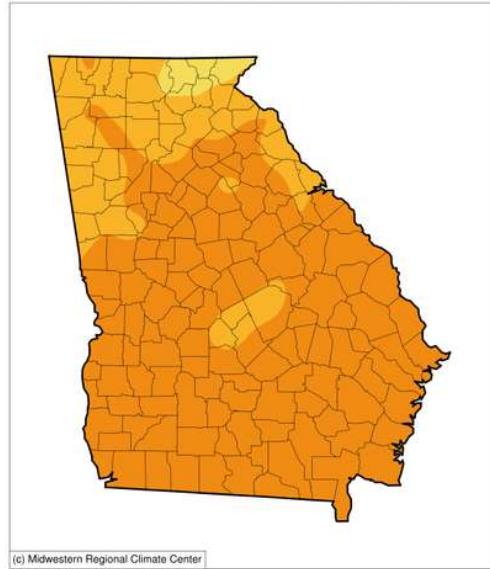
Topsoil	Previous week	This week
	(percent)	(percent)
Very short .....	5	7
Short .....	19	34
Adequate .....	52	54
Surplus .....	24	5
Subsoil	Previous week	This week
	(percent)	(percent)
Very short .....	5	5
Short .....	16	26
Adequate .....	63	65
Surplus .....	16	4

**Accumulated Precipitation (in)**  
August 12, 2024 to August 18, 2024



<https://mrcc.purdue.edu/CLIMATE>

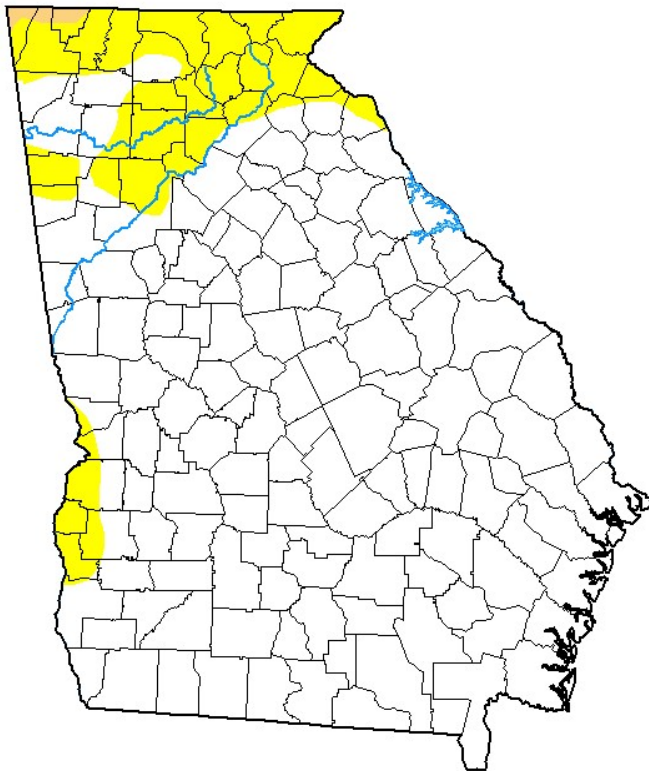
**Average Temperature (°F)**  
August 12, 2024 to August 18, 2024



<https://mrcc.purdue.edu/CLIMATE>

## U.S. Drought Monitor Georgia

**August 13, 2024**  
(Released Thursday, Aug. 15, 2024)  
Valid 8 a.m. EDT



Drought Conditions (Percent Area)

	None	D0-D4	D1-D4	D2-D4	D3-D4	D4
<b>Current</b>	86.55	13.45	0.36	0.00	0.00	0.00
<b>Last Week</b> 08-06-2024	79.89	20.11	0.36	0.00	0.00	0.00
<b>3 Months Ago</b> 05-14-2024	100.00	0.00	0.00	0.00	0.00	0.00
<b>Start of Calendar Year</b> 01-02-2024	46.66	53.34	28.92	11.91	0.07	0.00
<b>Start of Water Year</b> 09-26-2023	78.43	21.57	4.17	0.00	0.00	0.00
<b>One Year Ago</b> 08-15-2023	96.26	3.74	0.00	0.00	0.00	0.00

**Intensity:**

- None
- D0 Abnormally Dry
- D1 Moderate Drought
- D2 Severe Drought
- D3 Extreme Drought
- D4 Exceptional Drought

The Drought Monitor focuses on broad-scale conditions. Local conditions may vary. For more information on the Drought Monitor, go to <https://droughtmonitor.unl.edu/About.aspx>

**Author:**

Curtis Riganti  
National Drought Mitigation Center



[droughtmonitor.unl.edu](https://droughtmonitor.unl.edu)