



United States Department of Agriculture  
National Agricultural Statistics Service  
**Georgia Crop Progress  
and Condition Report**



Cooperating with the Georgia Department of Agriculture and the Cooperative Extension Service  
Southern Regional Field Office · 355 East Hancock Avenue, Suite 100 · Athens, GA 30601 · (800) 253-4419  
[www.nass.usda.gov](http://www.nass.usda.gov)

This report contains data collected each week from respondents across the state whose occupations provide them opportunities to discuss agricultural production with farmers in their counties as well as to make visual observations. We thank all who have contributed to this report.

August 26, 2024

Media Contact: Anthony Prillaman

**General**

According to the National Agricultural Statistics Service in Georgia, there were 6.7 days suitable for fieldwork for the week ending Sunday, August 25, 2024. Precipitation totals from available reporting stations ranged from no rain to over 4 inches of rain throughout the week. Average high temperatures ranged from the mid 70s to the low 90s. Average low temperatures ranged from the mid 50s to the mid 70s.

**Crops**

It was a very dry week for most of the state, with only the far southeastern region receiving any notable precipitation. The dry weather, combined with cooler temperatures, allowed operators to conduct a significant amount of field work. Late planted corn was reported to show signs of poor pollination and some operators were still irrigating fields due to dry conditions. The dry weather did help speed up corn harvest throughout the week, with half of the Georgia crop now harvested. Irrigation pivots were also used for many cotton and peanut fields as soil conditions in drier areas of the state were deteriorating rapidly. Soybeans remained in mostly good condition, but there were reports of premature leaf drop in some fields due to stress. There were also some reports of cotton and peanut damage due to extended periods of standing water in fields from Tropical Storm Debby. Silverleaf whitefly pressure increased in some regions of the state.

**Livestock and Pastures**

Cattle were in mostly good to fair condition, while pastures were in mostly fair to good condition. Pastures continued to deteriorate due to the lack of rain, and damage from armyworms. Some cattle operators continued to feed supplemental hay due to poor grazing conditions.

**Crop Progress for Week Ending 8/25/24**

Crop stage	Prev year (percent)	Prev week (percent)	This week (percent)	5 Year avg (percent)
Corn - Mature .....	90	89	93	93
Corn - Harvested .....	48	30	50	52
Cotton - Setting Bolls .....	93	88	92	94
Cotton - Bolls Opening .....	13	7	16	18
Hay - 2nd Cutting .....	95	92	95	97
Soybeans - Blooming .....	92	93	96	95
Soybeans - Setting Pods ...	74	79	85	81
Soybeans - Drop Leaves ...	6	6	16	4

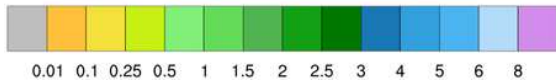
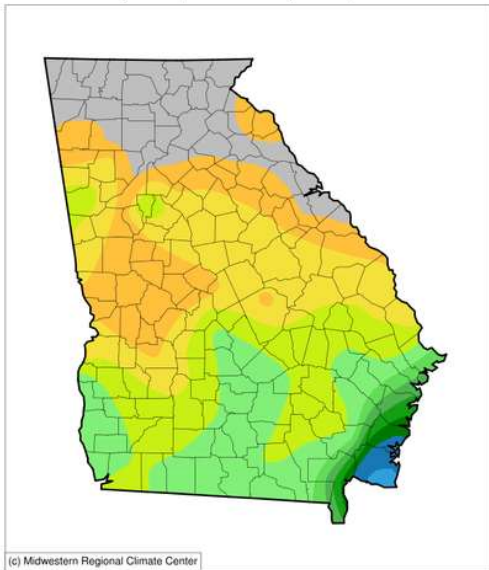
**Conditions for Week Ending 8/25/24**

Crop	Very poor (percent)	Poor (percent)	Fair (percent)	Good (percent)	Excellent (percent)
Cattle .....	3	9	28	51	9
Corn .....	7	13	27	45	8
Cotton .....	1	10	33	48	8
Pasture and range .....	14	21	36	27	2
Peanuts .....	1	7	30	54	8
Soybeans .....	1	8	33	53	5

**Soil Moisture for Week Ending 8/25/24**

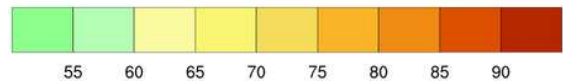
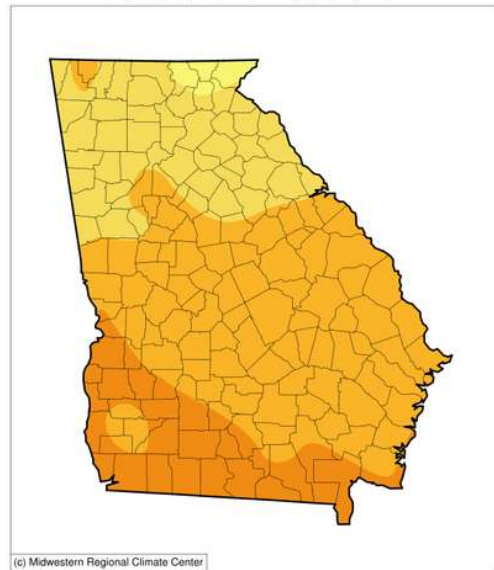
Topsoil	Previous week (percent)	This week (percent)
Very short .....	7	20
Short .....	34	43
Adequate .....	54	36
Surplus .....	5	1
Subsoil	Previous week (percent)	This week (percent)
Very short .....	5	15
Short .....	26	34
Adequate .....	65	50
Surplus .....	4	1

**Accumulated Precipitation (in)**  
August 19, 2024 to August 25, 2024



<https://mrcc.purdue.edu/CLIMATE>

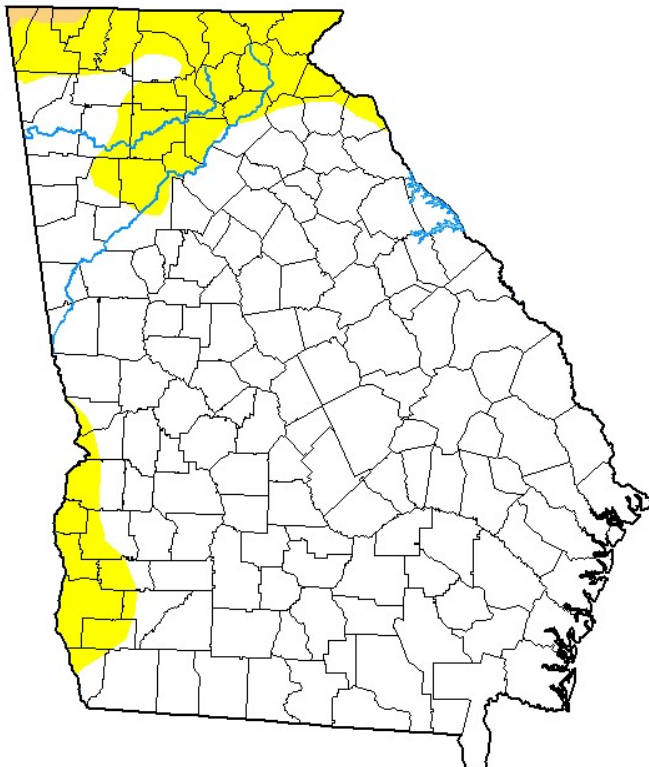
**Average Temperature (°F)**  
August 19, 2024 to August 25, 2024



<https://mrcc.purdue.edu/CLIMATE>

## U.S. Drought Monitor Georgia

**August 20, 2024**  
(Released Thursday, Aug. 22, 2024)  
Valid 8 a.m. EDT



Drought Conditions (Percent Area)

	None	D0-D4	D1-D4	D2-D4	D3-D4	D4
<b>Current</b>	85.36	14.64	0.36	0.00	0.00	0.00
<b>Last Week</b> 08-13-2024	86.55	13.45	0.36	0.00	0.00	0.00
<b>3 Months Ago</b> 05-21-2024	100.00	0.00	0.00	0.00	0.00	0.00
<b>Start of Calendar Year</b> 01-02-2024	46.66	53.34	28.92	11.91	0.07	0.00
<b>Start of Water Year</b> 09-26-2023	78.43	21.57	4.17	0.00	0.00	0.00
<b>One Year Ago</b> 08-22-2023	89.01	10.99	0.00	0.00	0.00	0.00

**Intensity:**

- None
- D0 Abnormally Dry
- D1 Moderate Drought
- D2 Severe Drought
- D3 Extreme Drought
- D4 Exceptional Drought

The Drought Monitor focuses on broad-scale conditions. Local conditions may vary. For more information on the Drought Monitor, go to <https://droughtmonitor.unl.edu/About.aspx>

**Author:**

Richard Heim  
NCEI/NOAA



[droughtmonitor.unl.edu](https://droughtmonitor.unl.edu)