

# HAWAII AGRICULTURAL LABOR



*Fact Finders for Agriculture*



# NASS

FACT FINDERS FOR AGRICULTURE  
UNITED STATES DEPARTMENT OF AGRICULTURE

National Agricultural Statistics Service

Hawaii Department of Agriculture  
Hawaii Agricultural Statistics Service

1428 South King Street  
Honolulu, HI 96814-2512

Oahu 1 - (808) 973-9588

Toll free PH: 1 - (800) 804-9514

FAX: 1 - (808) 973-2909

Internet: <http://www.nass.usda.gov/hi/speccrop/aglabor.htm>

FREQUENCY: Quarterly

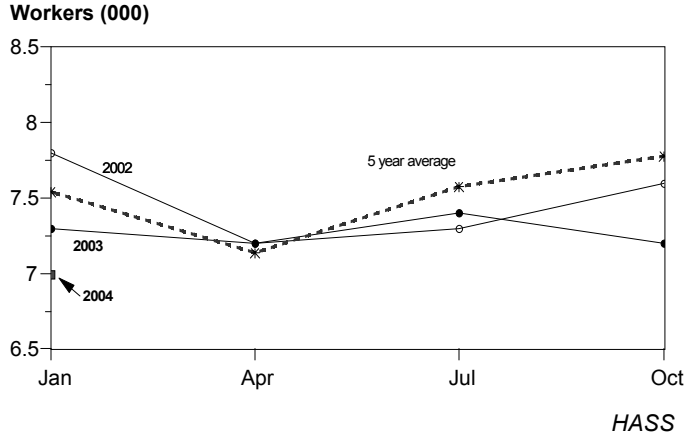
RELEASE: February 24, 2004

## AGRICULTURAL HIRED WORK FORCE DOWN 4 PERCENT

Hawaii's agricultural hired work force totaled **7,000** during the January 11-17, 2004, survey week. According to the *Hawaii Agricultural Statistics Service*, this was 4 percent and 3 percent below January 2003 and October 2003, respectively. The diversified agricultural sector, with 5,200 workers, accounted for nearly 75 percent of the total hired work force. The sugar industry employed 650 farm workers during

the survey week, while the pineapple industry employed 1,150 farm workers. Sugar and pineapple figures do not include mill and cannery workers.

## AGRICULTURAL HIRED WORKERS STATE OF HAWAII 2002 - 2004



The average wage paid to all hired workers during the January survey period was \$11.11 an hour, 7 cents more than January 2002. The combined average wage for field and livestock workers was \$9.39 an hour, 3 cents above a year ago.

Farms employing from 1 to 9 workers paid an average of \$8.94 per hour for all hired workers, while the combined average wage for field and livestock workers was \$8.28 an hour.

The annual average island breakdown of worker numbers will be published in the November report.

## HIRED WORKERS ON FARMS, STATE OF HAWAII, January 2004<sup>1</sup>

Quarter	Hired workers			
	Total	Sugar	Pineapple	Other
January 12-18, 2003	7,300	700	1,200	5,400
October 12-18, 2003	7,200	800	1,100	5,300
<b>January 11-17, 2004</b>	<b>7,000</b>	<b>650</b>	<b>1,150</b>	<b>5,200</b>

<sup>1</sup> Estimates for week includes the 12th of each survey month.

### HOURLY WAGE RATE by Type of Worker, January 2004 <sup>1</sup>

Quarter	All hired farm workers				Field & Livestock workers			
	Hawaii		California	United States	Hawaii		California	United States
	Farms with 1 - 9 workers	All farms			Farms with 1 - 9 workers	All farms		
January 12-18, 2003	9.04	11.04	9.44 <sup>2</sup>	9.34 <sup>2</sup>	7.89	9.36	8.46	8.50
January 11-17, 2004	8.94	11.11	9.46	9.41	8.28	9.39	8.54	8.55

Dollars

<sup>1</sup> Perquisite such as room and board, housing, etc. are provided some workers in all categories, but the values are not included in the wage rates.

<sup>2</sup> Revised.

## U.S. Hired Workers Down 5 Percent, Wage Rates Up 1 Percent From a Year Ago

There were 847,000 hired workers on the Nation's farms and ranches during the week of January 11-17, 2004, down 5 percent from a year ago. Of these hired workers, 667,000 workers were hired directly by farm operators. Agricultural service employees on farms and ranches made up the remaining 180,000 workers.

Farm operators paid their hired workers an average wage rate of \$9.41 per hour during the January 2004 reference week, up 7 cents from a year earlier. Field workers received an average of \$8.39 per hour, up 9 cents from last January, while livestock workers earned \$8.84 per hour compared with \$8.90 a year earlier. The field and livestock worker combined wage rate, at \$8.55 per hour, was up 5 cents from last year.

The number of hours worked averaged 38.1 hours for hired workers during the survey week, up 1 percent from a year ago.

**DONALD A. MARTIN**  
State Agricultural Statistician

**NILS K. MORITA**  
Research Statistician

**STEVE GUNN**  
Deputy State Agricultural Statistician

**KAREN A. LEE**  
Statistical Assistant