

HAWAII AGRICULTURAL LABOR



Fact Finders for Agriculture



NASS

FACT FINDERS FOR AGRICULTURE
UNITED STATES DEPARTMENT OF AGRICULTURE

National Agricultural Statistics Service

Hawaii Department of Agriculture
Hawaii Agricultural Statistics Service

1428 South King Street
Honolulu, HI 96814-2512
☎ Oahu 1 - (808) 973-9588
☎ Toll free PH: 1 - (800) 804-9514
FAX: 1 - (808) 973-2909

Internet: <http://www.nass.usda.gov/hi/speccrop/aglabor.htm>

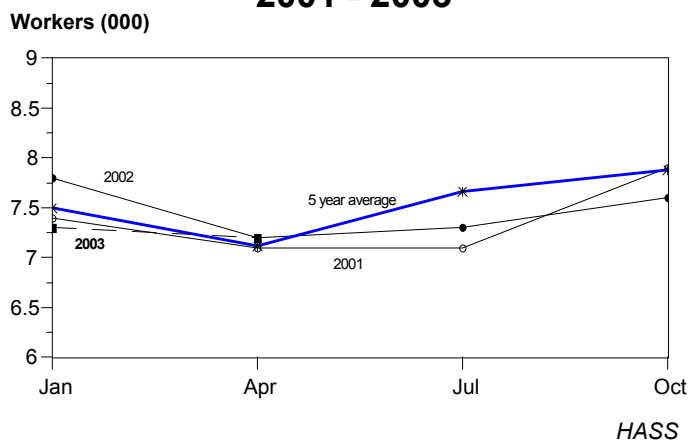
FREQUENCY: Quarterly

RELEASE: June 23, 2003

AGRICULTURAL HIRED WORK FORCE UNCHANGED FROM YEAR AGO

Hawaii's agricultural hired work force totaled 7,200 during the April 6-12, 2003, survey week. According to the *Hawaii Agricultural Statistics Service*, this was unchanged from April a year ago, but 1 percent below January 2003. The diversified agricultural sector, with 5,200 workers, accounted for about 70 percent of the total hired work force. The sugar industry employed 650 farm workers during the survey week, while the pineapple industry employed 1,350 farm workers. Sugar and pineapple figures do not include mill and cannery workers.

AGRICULTURAL HIRED WORKERS STATE OF HAWAII 2001 - 2003



The average wage paid to all hired workers during the April survey period was \$11.50 an hour, 36 cents more than April 2002. The combined average wage for field and livestock workers was \$9.63 an hour, 20 cents more than a year ago.

Farms employing from 1 to 9 workers paid an average of \$9.81 per hour for all hired workers, while the combined average wage for field and livestock workers was \$8.73 an hour.

The annual average island breakdown of worker numbers will be published in the November report.

NOTE: Due to a change in the national labor statistics program, estimates for self-employed and unpaid workers have been discontinued beginning with the July 2002 report. Only estimates for hired workers will be made.

WORKERS ON FARMS, STATE OF HAWAII, April 2003¹

Quarter	Total farm workers	Self-employed farm operators	Unpaid workers ²	Hired workers			
				Total	Sugar	Pineapple	Other
April 7-13, 2002	11,400	3,000	1,200	7,200	800	1,250	5,150
January 12-18, 2003	NA	NA	NA	7,300	700	1,200	5,400
April 6-12, 2003	NA	NA	NA	7,200	650	1,350	5,200

NA = Not Available, data series discontinued starting July 2002.

¹ Estimates for week includes the 12th of each survey month.

² Includes family members and others working 15 or more hours per week.

HOURLY WAGE RATE by Type of Worker, April 2003 ¹

Quarter	All hired farm workers				Field & Livestock workers			
	Hawaii		California	United States	Hawaii		California	United States
	Farms with 1 - 9 workers	All farms			Farms with 1 - 9 workers	All farms		
Dollars								
April 7-13, 2002	10.32	11.14	9.13	8.83	8.36	9.43	8.47	8.15
April 6-12, 2003	9.81	11.50	9.22	9.16	8.73	9.63	8.48	8.49

¹ Perquisite such as room and board, housing, etc. are provided some workers in all categories, but the values are not included in the wage rates.

U.S. Hired Workers Down 13 Percent, Wage Rates Up 4 Percent From a Year Ago

There were 938,000 hired workers on the Nation's farms and ranches during the week of April 6-12, 2003, down 13 percent from a year ago. Of these hired workers, 781,000 workers were hired directly by farm operators. Agricultural service employees on farms and ranches made up the remaining 157,000 workers.

Farm operators paid their hired workers an average wage rate of \$9.16 per hour during the April 2003 reference week, up 33 cents from a year earlier. Field workers received an average of \$8.40 per hour, up 34 cents from last April, while livestock workers earned \$8.75 per hour compared with \$8.43 a year earlier. The field and livestock worker combined wage rate, at \$8.49 per hour, was up 34 cents from last year.

The number of hours worked averaged 40.1 hours for hired workers during the survey week compared with 40.2 hours a year ago.

DONALD A. MARTIN
State Agricultural Statistician

NILS K. MORITA
Research Statistician

STEVE GUNN
Deputy State Agricultural Statistician

KAREN A. LEE
Statistical Assistant