

HAWAII AGRICULTURAL LABOR



Fact Finders for Agriculture



NASS

FACT FINDERS FOR AGRICULTURE
UNITED STATES DEPARTMENT OF AGRICULTURE

National Agricultural Statistics Service

Hawaii Department of Agriculture
Hawaii Agricultural Statistics

1428 South King Street
Honolulu, HI 96814-2512
☎ Oahu 1 - (808) 973-9588
☎ Toll free PH: 1 - (800) 804-9514
FAX: 1 - (808) 973-2909
Internet: <http://www.nass.usda.gov/hi/speccrop/aglabor.htm>

FREQUENCY: Quarterly

RELEASE: June 1, 2004

AGRICULTURAL HIRED WORK FORCE 1 PERCENT HIGHER

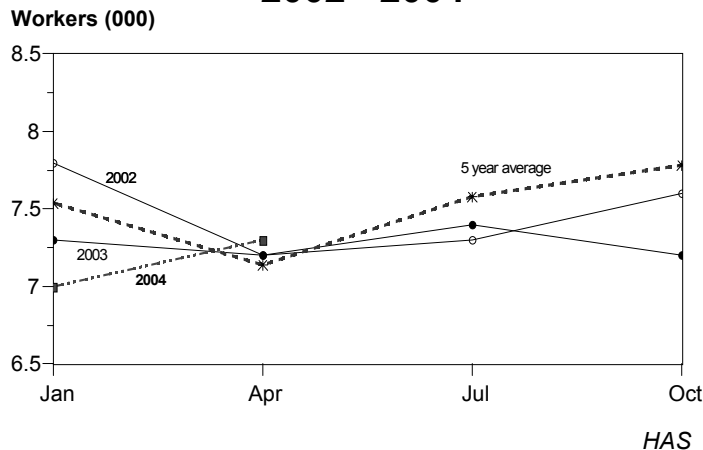
Hawaii's agricultural hired work force totaled **7,300** during the April 11-17, 2004, survey week. According to the *Hawaii Agricultural Statistics*, this was 1 percent and 4 percent above April 2003 and January 2004, respectively. The diversified agricultural sector, with 5,400 workers, accounted for nearly 75 percent of the total hired work force. The sugar industry employed 750 farm workers during the survey week, while the pineapple industry employed 1,150 farm workers. Sugar and pineapple figures do not include mill and cannery workers.

The average wage paid to all hired workers during the April survey period was \$11.26 an hour, 24 cents less than April 2003. The combined average wage for field and livestock workers was \$9.66 an hour, 3 cents above a year ago.

Farms employing from 1 to 9 workers paid an average of \$10.68 per hour for all hired workers, while the combined average wage for field and livestock workers was \$9.12 an hour.

The annual average island breakdown of worker numbers will be published in the November report.

AGRICULTURAL HIRED WORKERS STATE OF HAWAII 2002 - 2004



HIRED WORKERS ON FARMS, STATE OF HAWAII, April 2004¹

Quarter	Hired workers			
	Total	Sugar	Pineapple	Other
April 6-12, 2003	7,200	650	1,350	5,200
January 11-17, 2004	7,000	650	1,150	5,200
April 11-17, 2004	7,300	750	1,150	5,400

¹ Estimates for week includes the 12th of each survey month.

HOURLY WAGE RATE by Type of Worker, April 2004 ¹

Quarter	All hired farm workers				Field & Livestock workers			
	Hawaii		California	United States	Hawaii		California	United States
	Farms with 1 - 9 workers	All farms			Farms with 1 - 9 workers	All farms		
Dollars								
April 6-12, 2003 . . .	9.81	11.50	9.22	9.16	8.73	9.63	8.48	8.49
April 11-17, 2004 . .	10.68	11.26	9.26	9.22	9.12	9.66	8.52	8.58

¹ Perquisite such as room and board, housing, etc. are provided some workers in all categories, but the values are not included in the wage rates.

U.S. Hired Workers Up 15 Percent, Wage Rates Up 1 Percent From a Year Ago

There were 1,077,000 hired workers on the Nation's farms and ranches during the week of April 11-17, 2004, up 15 percent from a year ago. Of these hired workers, 825,000 workers were hired directly by farm operators. Agricultural service employees on farms and ranches made up the remaining 252,000 workers.

Farm operators paid their hired workers an average wage of \$9.22 per hour during the April 2004 reference week, up 6 cents from a year earlier. Field workers received an average of \$8.46 per hour, up 6 cents from last April, while livestock workers earned \$8.95 per hour compared with \$8.75 a year earlier. The field and livestock worker combined wage rate, at \$8.58 per hour, was up 9 cents from last year.

The number of hours worked averaged 40.7 hours for hired workers during the survey week, up 1 percent from a year ago.

DONALD A. MARTIN
Director

TIANA SUDDUTH
Student Trainee

NILS K. MORITA
Research Statistician

STEVE GUNN
Deputy Director

KAREN A. LEE
Statistical Assistant