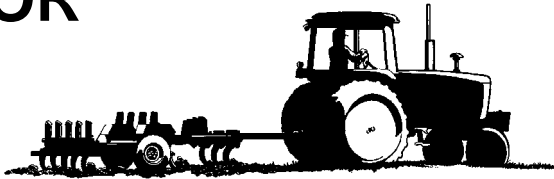


# HAWAII AGRICULTURAL LABOR



Fact Finders for Agriculture



# NASS

FACT FINDERS FOR AGRICULTURE  
UNITED STATES DEPARTMENT OF AGRICULTURE

National Agricultural Statistics Service

Hawaii Department of Agriculture  
Hawaii Agricultural Statistics

1428 South King Street  
Honolulu, HI 96814-2512

Oahu 1 - (808) 973-9588

Toll free PH: 1 - (800) 804-9514

FAX: 1 - (808) 973-2909

Internet: <http://www.nass.usda.gov/hi/speccrop/aglabor.htm>

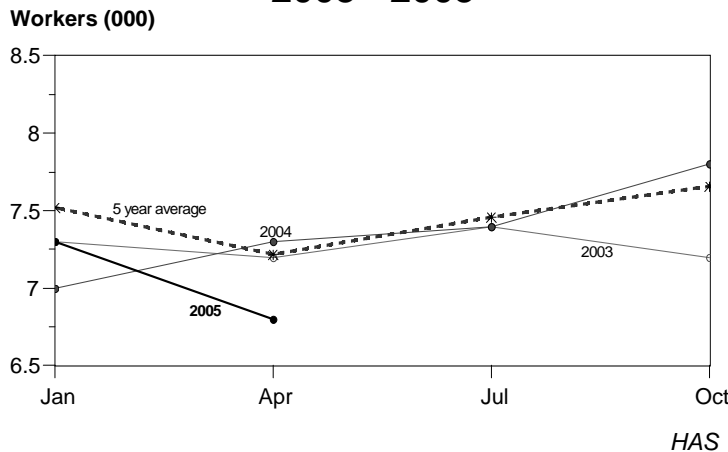
FREQUENCY: Quarterly

RELEASE: June 9, 2005

## AGRICULTURAL HIRED WORK FORCE DOWN 7 PERCENT

Hawaii's agricultural hired work force totaled **6,800** during the April 10-16, 2005, survey week. According to the *Hawaii Agricultural Statistics*, this was 7 percent below both April 2004 and January 2005. The diversified agricultural sector, with 5,050 workers, accounted for almost 75 percent of the total hired work force. The sugar industry employed 700 farm workers during the survey week, while the pineapple industry employed 1,050 farm workers. Sugar and pineapple figures do not include mill and cannery workers.

### AGRICULTURAL HIRED WORKERS STATE OF HAWAII 2003 - 2005



The average wage paid to all hired workers during the April survey period was \$11.33 an hour, 7 cents more than April 2004. The combined average wage for field and livestock workers was \$9.79 an hour, 13 cents above a year ago.

Farms employing from 1 to 9 workers paid an average of \$10.58 per hour for all hired workers, while the combined average wage for field and livestock workers was \$9.25 an hour.

The annual average island breakdown of worker numbers will be published in the November report.

### HIRED WORKERS ON FARMS, STATE OF HAWAII, April 2005<sup>1</sup>

Quarter	Hired workers			
	Total	Sugar	Pineapple	Other
April 11-17, 2004 .....	7,300	750	1,150	5,400
January 9-15, 2005 .....	7,300	550	1,150	5,600
<b>April 10-16, 2005 .....</b>	<b>6,800</b>	<b>700</b>	<b>1,050</b>	<b>5,050</b>

<sup>1</sup> Estimates for week includes the 12th of each survey month.

## HOURLY WAGE RATE by Type of Worker, April 2005 <sup>1</sup>

Quarter	All hired farm workers				Field & Livestock workers			
	Hawaii		California	United States	Hawaii		California	United States
	Farms with 1 - 9 workers	All farms			Farms with 1 - 9 workers	All farms		
	Dollars							
April 11-17, 2004 . .	10.68	11.26	9.30 <sup>2</sup>	9.23 <sup>2</sup>	9.12	9.66	8.56 <sup>2</sup>	8.59 <sup>2</sup>
April 10-16, 2005 . .	10.58	11.33	9.48	9.34	9.25	9.79	8.82	8.73

<sup>1</sup> Perquisite such as room and board, housing, etc. are provided some workers in all categories, but the values are not included in the wage rates.

<sup>2</sup> Revised.

## U.S. Hired Workers Down 10 Percent From a Year Ago

There were 978,000 hired workers on the Nation's farms and ranches during the week of April 10-16, 2005, down 10 percent from a year ago. Of these hired workers, 746,000 workers were hired directly by farm operators. Agricultural service employees on farms and ranches made up the remaining 232,000 workers.

Farm operators paid their hired workers an average wage of \$9.34 per hour during the April 2005 reference week, up 11 cents from a year earlier. Field workers received an average of \$8.55 per hour, up 8 cents from last April, while livestock workers earned \$9.23 per hour compared with \$8.95 a year earlier. The field and livestock worker combined wage rate, at \$8.73 per hour, was up 14 cents from last year.

The number of hours worked averaged 39.8 hours for hired workers during the survey week, down 2 percent from a year ago.

**MARK E. HUDSON**  
Director

NILS K. MORITA  
Research Statistician

**STEVE GUNN**  
Deputy Director

KAREN A. LEE  
Statistical Assistant