

HAWAII AGRICULTURAL LABOR



Fact Finders for Agriculture



NASS

FACT FINDERS FOR AGRICULTURE
UNITED STATES DEPARTMENT OF AGRICULTURE

National Agricultural Statistics Service

Hawaii Department of Agriculture
Hawaii Agricultural Statistics Service

1428 South King Street
Honolulu, HI 96814-2512
☎ Oahu 1 - (808) 973-9588
☎ Toll free PH: 1 - (800) 804-9514
FAX: 1 - (808) 973-2909

Internet: <http://www.nass.usda.gov/hi/speccrop/aglabor.htm>

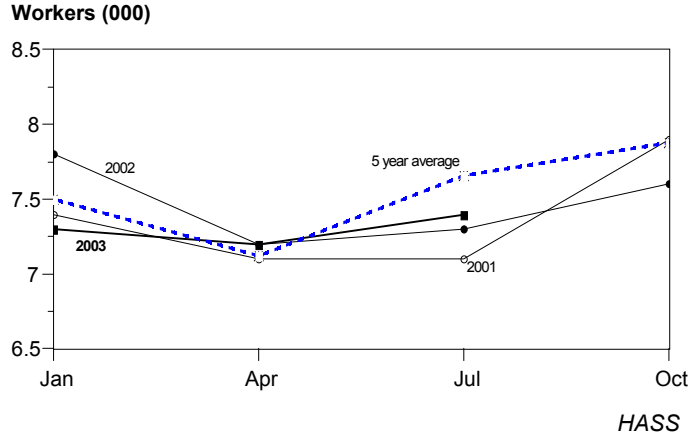
FREQUENCY: Quarterly

RELEASE: September 11, 2003

AGRICULTURAL HIRED WORK FORCE 1 PERCENT ABOVE YEAR AGO

Hawaii's agricultural hired work force totaled **7,400** during the July 6-12, 2003, survey week. According to the *Hawaii Agricultural Statistics Service*, this was 1 percent and 3 percent above July 2002 and April 2003, respectively. The diversified agricultural sector, with 5,300 workers, accounted for about 70 percent of the total hired work force. The sugar industry employed 800 farm workers during the survey week, while the pineapple industry employed 1,300 farm workers. Sugar and pineapple figures do not include mill and cannery workers.

AGRICULTURAL HIRED WORKERS STATE OF HAWAII 2001 - 2003



The average wage paid to all hired workers during the July survey period was \$11.25 an hour, 4 cents less than July 2002. The combined average wage for field and livestock workers was \$9.55 an hour, 12 cents less than a year ago.

Farms employing from 1 to 9 workers paid an average of \$10.10 per hour for all hired workers, while the combined average wage for field and livestock workers was \$8.51 an hour.

The annual average island breakdown of worker numbers will be published in the

November report.

HIRED WORKERS ON FARMS, STATE OF HAWAII, July 2003¹

Quarter	Hired workers			
	Total	Sugar	Pineapple	Other
July 7-13, 2002	7,300	800	1,450	5,050
April 6-12, 2003	7,200	650	1,350	5,200
July 6-12, 2003	7,400	800	1,300	5,300

¹ Estimates for week includes the 12th of each survey month.

HOURLY WAGE RATE by Type of Worker, July 2003 ¹

Quarter	All hired farm workers				Field & Livestock workers			
	Hawaii		California	United States	Hawaii		California	United States
	Farms with 1 - 9 workers	All farms			Farms with 1 - 9 workers	All farms		
	Dollars							
July 7-13, 2002 . . .	9.46	11.29	8.87	8.57	8.76	9.67	8.32	8.02
July 6-12, 2003 . . .	10.10	11.25	9.23	8.88	8.51	9.55	8.61	8.28

¹ Perquisite such as room and board, housing, etc. are provided some workers in all categories, but the values are not included in the wage rates.

U.S. Hired Workers Up 1 Percent, Wage Rates Up 4 Percent From a Year Ago

There were 1,273,000 hired workers on the Nation's farms and ranches during the week of July 6-12, 2003, up 1 percent from a year ago. Of these hired workers, 953,000 workers were hired directly by farm operators. Agricultural service employees on farms and ranches made up the remaining 320,000 workers.

Farm operators paid their hired workers an average wage rate of \$8.88 per hour during the July 2003 reference week, up 31 cents from a year earlier. Field workers received an average of \$8.18 per hour, up 28 cents from last July, while livestock workers earned \$8.62 per hour compared with \$8.38 a year earlier. The field and livestock worker combined wage rate, at \$8.28 per hour, was up 26 cents from last year.

The number of hours worked averaged 40.0 hours for hired workers during the survey week, unchanged from a year ago.

DONALD A. MARTIN
State Agricultural Statistician

NILS K. MORITA
Research Statistician

STEVE GUNN
Deputy State Agricultural Statistician

KAREN A. LEE
Statistical Assistant