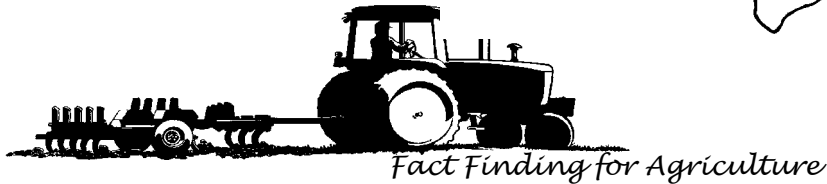


# HAWAII AGRICULTURAL LABOR



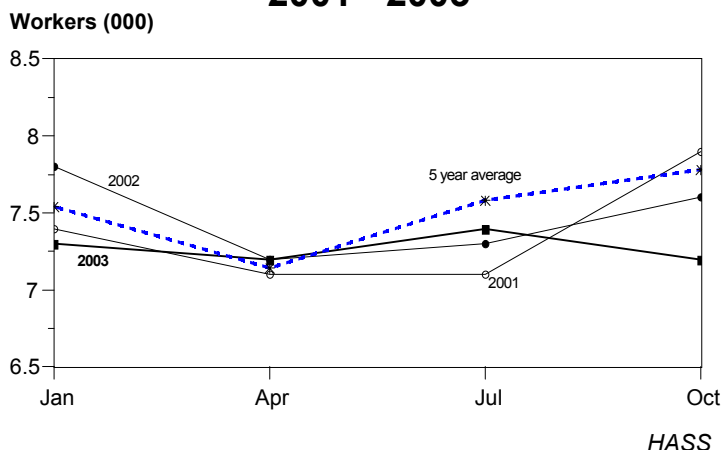
National Agricultural Statistics Service  
Hawaii Department of Agriculture  
Hawaii Agricultural Statistics Service  
P.O. Box 22159  
Honolulu, HI 96823-2159  
☎ Oahu 1 - (808) 973-9588  
☎ Toll free PH: 1 - (800) 804-9514  
FAX: 1 - (808) 973-2909

**FREQUENCY:** Quarterly

**RELEASE:** November 21, 2003

## AVERAGE AGRICULTURAL HIRED WORK FORCE BELOW YEAR AGO October 2003 Hired Work Force 5 Percent Less Than A Year Ago

### AGRICULTURAL HIRED WORKERS STATE OF HAWAII 2001 - 2003



Hawaii's agricultural hired work force, at the farm level, totaled **7,200** during the October 12-18, 2003 survey week. According to the *Hawaii Agricultural Statistics Service*, this was 5 percent and 3 percent less than October 2002 and July 2003, respectively. The diversified agricultural sector, with 5,300 workers, accounted for over 70 percent of the hired work force. The sugar and pineapple industry employed 800 and 1,100 workers, respectively. Sugar and pineapple figures do not include mill and cannery workers.

The annual average number of hired workers, working in agriculture during 2003 (the average of the 4 quarterly surveys: January, April, July, and October) was 7,300, a decrease of 3 percent from 2002.

The average wage paid to all hired workers during the October survey period was \$11.56 an hour, 54 cents and 31 cents more than October 2002 and July 2003, respectively. The combined average wage for field and livestock workers was \$9.88 an hour, 56 cents and 33 cents more than a year ago and the previous quarter, respectively.

Farms employing from 1 to 9 workers paid an average of \$9.57 per hour, while the combined average wage for field and livestock workers was \$8.80 an hour.

The annual average wage rate for all hired workers during 2003 was \$11.33 an hour, 26 cents higher than 2002, while the combined average wage for field and livestock workers was \$9.60 an hour, 18 cents more.

## HIRED WORKERS ON FARMS, STATE OF HAWAII, October 2003 <sup>1</sup>

Quarter	Hired workers			
	Total	Sugar	Pineapple	Other
October 6-12, 2002 . . . . .	7,600	1,000	1,200	5,400
July 6-12, 2003 . . . . .	7,400	800	1,300	5,300
<b>October 12-18, 2003 . . . . .</b>	<b>7,200</b>	<b>800</b>	<b>1,100</b>	<b>5,300</b>

<sup>1</sup> Estimates for week includes the 12th of each survey month.

## ANNUAL AVERAGE NUMBER OF WORKERS ON FARMS, STATE OF HAWAII, 1999-2003 <sup>1</sup>

Year	Total farm workers <sup>2</sup>	Self-employed farm operators	Unpaid workers <sup>3</sup>	Hired workers			
				Total <sup>2</sup>	Sugar	Pineapple	Other
1999	11,800	3,000	1,200	7,600	1,200	1,300	5,200
2000	11,900	3,100	1,000	7,800	1,000	1,200	5,600
2001	11,800	3,300	1,100	7,400	800	1,200	5,500
2002	NA	NA	NA	7,500	900	1,300	5,400
<b>2003</b>	<b>NA</b>	<b>NA</b>	<b>NA</b>	<b>7,300</b>	<b>700</b>	<b>1,200</b>	<b>5,300</b>

<sup>1</sup> Averages are based on January, April, July, and October surveys.

<sup>2</sup> Sum of hired workers by type of farm may not add to hired workers total due to rounding.

<sup>3</sup> Includes family members and others working 15 or more hours per week.

NA = Not available, data series discontinued starting July 2002.

## ANNUAL AVERAGE NUMBER OF WORKERS ON FARMS, BY ISLANDS, 1999-2003 <sup>1</sup>

Year	Self-employed farm operators	Unpaid workers <sup>2</sup>	Hired workers	Year	Self-employed farm operators	Unpaid workers <sup>2</sup>	Hired workers
<b>Hawaii</b>				<b>Maui</b>			
1999	1,850	600	2,400	1999	450	200	2,200
2000	1,800	550	2,700	2000	500	150	2,000
2001	1,950	550	2,650	2001	500	150	1,800
2002	NA	NA	2,450	2002	NA	NA	2,250
<b>2003</b>	<b>NA</b>	<b>NA</b>	<b>2,750</b>	<b>2003</b>	<b>NA</b>	<b>NA</b>	<b>1,650</b>
<b>Kauai</b>				<b>Honolulu</b>			
1999	250	100	900	1999	500	300	2,100
2000	300	50	950	2000	500	200	2,200
2001	350	150	650	2001	550	250	2,300
2002	NA	NA	750	2002	NA	NA	2,100
<b>2003</b>	<b>NA</b>	<b>NA</b>	<b>750</b>	<b>2003</b>	<b>NA</b>	<b>NA</b>	<b>2,150</b>

<sup>1</sup> Averages are based on the January, April, July, and October surveys.

<sup>2</sup> Includes family members and others working 15 or more hours per week.

NA = Not available, data series discontinued starting July 2002.

## U.S. Hired Workers down 1 Percent, Wage Rates Up 1 Percent From a Year Ago

There were 1,197,000 hired workers on the Nation's farms and ranches during the week of October 12-18, 2003, down 1 percent from a year ago. Of these hired workers, 891,000 workers were hired directly by farm operators. Agricultural service employees on farms and ranches made up the remaining 306,000 workers. Farm operators paid their hired workers an average wage rate of \$9.05 per hour during the October 2003 reference week, up 10 cents from a year earlier. Field workers received an average of \$8.42 per hour, up 8 cents from last October, while livestock workers earned \$8.64 per hour compared with \$8.42 a year earlier. The Field and Livestock worker combined wage rate, at \$8.47 per hour, was up 11 cents from last year. The number of hours worked averaged 40.2 hours for hired workers during the survey week, down fractionally from a year ago.

### ANNUAL AVERAGE NUMBER OF WORKERS ON FARMS, UNITED STATES, 2001-2003 <sup>1</sup>

Year	Number of workers			Wage Rate		
	Self-employed farm operators	Unpaid workers <sup>2</sup>	Hired workers	All hired	Field workers	Field & livestock workers
	----- 1,000 workers -----			----- Dollars per hour -----		
<b>California</b>						
2001	29.8	4.3	209.0	8.67	7.89	8.02
2002	NA	NA	245.2 <sup>3</sup>	9.14 <sup>3</sup>	8.34 <sup>3</sup>	8.46 <sup>3</sup>
<b>2003</b>	<b>NA</b>	<b>NA</b>	<b>227.5</b>	<b>9.25</b>	<b>8.34</b>	<b>8.50</b>
<b>United States</b>						
2001	1,559.8	490.0	873.3	8.45	7.78	7.86
2002	NA	NA	885.7 <sup>3</sup>	8.81 <sup>3</sup>	8.12 <sup>3</sup>	8.18 <sup>3</sup>
<b>2003</b>	<b>NA</b>	<b>NA</b>	<b>836.0</b>	<b>9.08</b>	<b>8.31</b>	<b>8.42</b>

<sup>1</sup> Averages are based on January, April, July, and October surveys.

<sup>2</sup> Includes family members and others working 15 or more hours per week.

<sup>3</sup> Revised.

NA = Not available, data series discontinued starting July 2002.

### HOURLY WAGE RATE by Type of Worker, October 2003 <sup>1</sup>

Quarter	All hired farm workers				Field & Livestock workers			
	Hawaii		California	United States	Hawaii		California	United States
	Farms with 1 - 9 workers	All farms			Farms with 1 - 9 workers	All farms		
	Dollars							
October 6-12, 2002 . .	10.05	11.02	9.39 <sup>2</sup>	8.95 <sup>2</sup>	8.14	9.32	8.68 <sup>2</sup>	8.36 <sup>2</sup>
October 12-18, 2003	9.57	11.56	9.13	9.05	8.80	9.88	8.54	8.47

<sup>1</sup> Perquisite such as room and board, housing, etc. are provided some workers in all categories, but the values are not included in the wage rates.

<sup>2</sup> Revised.

**ANNUAL AVERAGE HOURLY WAGE RATE by Type of Worker, 1999-2003 <sup>1 2</sup>**

Year	All farms		Farms with 1 - 9 workers	
	All hired workers	Field / livestock	All hired workers	Field / livestock
			Dollars	
1999	10.87	9.38	8.63	7.76
2000	10.62	9.05	8.65	7.69
2001	10.83	9.29	8.86	8.15
2002	11.07	9.42	9.66	8.26
<b>2003</b>	<b>11.33</b>	<b>9.60</b>	<b>9.66</b>	<b>8.53</b>

<sup>1</sup> Perquisite such as room and board, housing, etc. are provided some workers in all categories, but the values are not included in the wage rates.

<sup>2</sup> The annual average wage rate is based on the January, April, July, and October surveys, weighted by the number of hours worked during each of the survey week.

**DONALD A. MARTIN**  
State Agricultural Statistician

NILS K. MORITA  
Research Statistician

**STEVE GUNN**  
Deputy State Agricultural Statistician

KAREN A. LEE  
Statistical Assistant

U.S. Department of Agriculture  
Hawaii Agricultural Statistics Service  
1428 South King Street  
Honolulu, Hawaii 96814-2512

Presorted Standard Postage and Fees Paid NATIONAL AGRICULTURAL STATISTICS SERVICE Permit No. G-38
---

---

**OFFICIAL BUSINESS**  
**PENALTY FOR PRIVATE USE \$300**