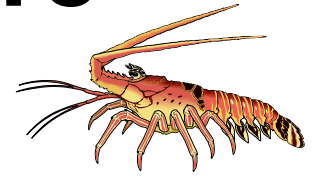
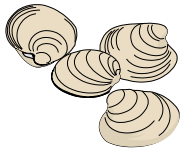


Hawaii Aquaculture



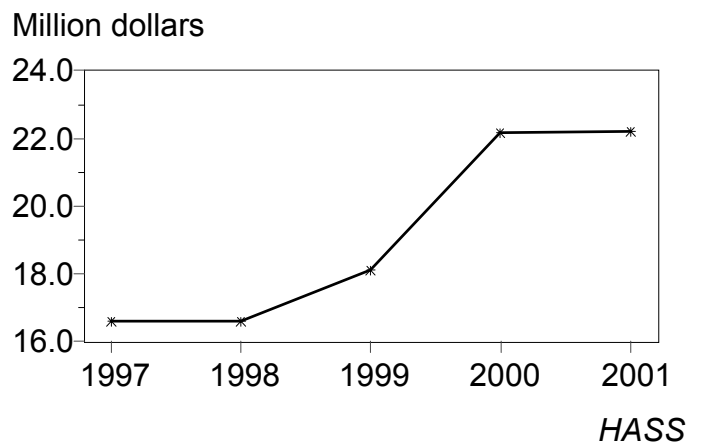
FREQUENCY: Annual

RELEASE: October 18, 2002

HAWAII AQUACULTURE HARVESTS REMAIN UNCHANGED

The value of Hawaii grown aquaculture totaled **\$22.2** million in 2001, unchanged from 2000. Algae and finfish experienced an increase in value from the previous year. In 2001, the value of algae, \$9.7 million, accounted for 44 percent of the harvest, followed by shellfish, \$7.5 million, with 33 percent. The 'other' category, which includes ornamentals, seed stock, brood stock, and others was valued at \$2.6 million, 12 percent of the total. Finfish rose 4 percent to \$2.4 million and comprised the remaining 11 percent. Hawaii county continued to lead the State in aquaculture sales with \$16.2 million, or 73 percent of the total. Kauai county also experienced an increase in sales from the previous year. The ranking of other counties in order of value were Honolulu, Kauai, and Maui. Some producers noted the September 11th crisis slowed sales of local and exported products.

Hawaii Aquaculture: Value, State of Hawaii, 1997-2001



Hawaii Agricultural
Statistics Service
Fact Finding For Agriculture

HAWAII DEPARTMENT OF AGRICULTURE
U.S. DEPARTMENT OF AGRICULTURE
1428 SOUTH KING STREET
HONOLULU, HI 96814-2512

(808) 973-9588
FAX: (808) 973-2909
internet: <http://www.nass.usda.gov/hi/>

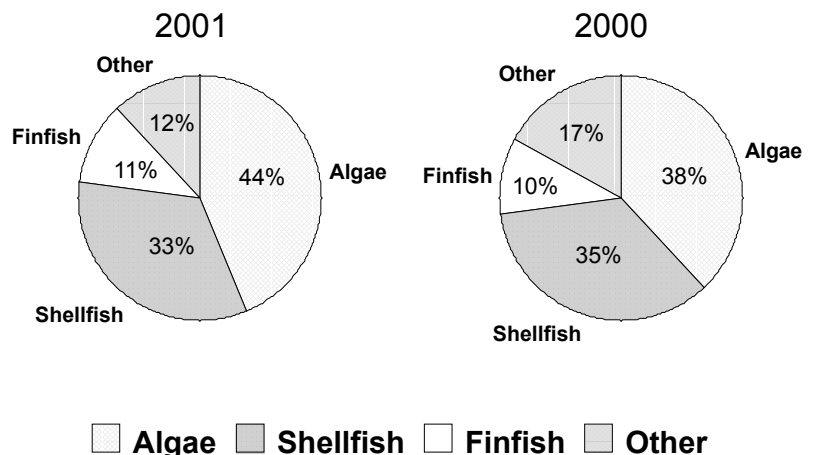
Donald A. Martin
State Agricultural Statistician

Regina W. Hidano
Research Statistician

Karen A. Lee
Statistical Assistant

Contributing:
Robert Miyake, James Yamaki - Hawaii
Naomi Landgraf - Maui
June Okamura - Honolulu & Kauai
Wendell Au - Honolulu

Aquaculture: Percent of Total Sales, State of Hawaii



AQUACULTURE: Number of operations, production, and value, by counties, 1997-2001 ¹

Year	Number of operations	Production			Value				
		Shellfish ²	Finfish	Algae	Shellfish	Finfish	Algae	Other ³	Total
		----- 1,000 pounds -----			----- 1,000 dollars -----				
State									
1997	110	NA	NA	NA	4,960	950	8,295	2,395	16,600
1998	105	700	218	1,325	4,960	958	8,295	2,407	16,620
1999	100	996	215	1,193	6,393	1,010	7,883	2,816	18,102
2000	85	1,190	440	1,268	7,677	2,302	8,447	3,744	22,170
2001	80	1,166	467	--	7,464	2,404	9,684	2,648	22,200
Counties:									
Hawaii									
1997	NA	NA	NA	NA	NA	NA	NA	NA	13,380
1998	44	485	45	⁴	3,648	⁴	⁴	1,476	13,383
1999	42	475	86	1,022	3,513	562	7,473	1,829	13,377
2000	37	450	⁴	1,035	3,571	⁴	7,953	⁴	16,009
2001	33	425	⁴	--	3,061	⁴	9,021	⁴	16,198
Honolulu									
1997	NA	NA	NA	NA	NA	NA	NA	NA	2,120
1998	46	⁴	131	⁴	1,013	⁴	⁴	280	2,100
1999	44	222	114	⁴	1,370	408	⁴	241	2,333
2000	35	359	72	⁴	2,123	349	⁴	⁴	2,985
2001	32	304	95	--	1,843	491	⁴	⁴	2,815
Kauai									
1997	NA	NA	NA	NA	NA	NA	NA	NA	⁴
1998	3		⁴			⁴		⁴	⁴
1999	4	⁴	⁴	⁴	⁴	⁴	⁴	⁴	⁴
2000	4	⁴	⁴		⁴	⁴		⁴	⁴
2001	4	⁴	⁴		⁴	⁴		⁴	⁴
Maui									
1997	NA	NA	NA	NA	NA	NA	NA	NA	⁴
1998	12	⁴	⁴	⁴	⁴	⁴	⁴	⁴	⁴
1999	10	⁴	⁴	⁴	⁴	⁴	⁴	⁴	⁴
2000	9	⁴	⁴	⁴	⁴	⁴	⁴	⁴	⁴
2001	11	⁴	⁴	--	⁴	⁴	⁴	⁴	⁴

NA = Not available. -- Not Applicable.

¹1995 - 1997 data were collected by the Aquaculture Development Program.

²Some shellfish products sold by pieces, pounds not given.

³Non-food products: ornamental fish, seed stock, other. Items not sold by weight.

⁴Data not shown separately to avoid disclosure of individual operations but combined and included in the State total.