



HAWAII BANANAS

ANNUAL SUMMARY

FREQUENCY: Annual

RELEASE: June 24, 2008

In this Issue:

2007 Summary	1
Hawaii Banana Statistics . . .	2-3
Inshipments	3
U.S. Fresh Imports	4



In cooperation with:



USDA, NASS, Hawaii Field Office
 Hawaii Department of Agriculture
 1428 South King Street
 Honolulu, HI 96814-2512
 PH (808) 973-9588 FAX: (808) 973-2909
 Internet address:
<http://www.nass.usda.gov/hi/fruit/annban.pdf>

Mark Hudson
 Director

King Whetstone
 Deputy Director

Arthur Osaki
 Research Statistician

Karen A. Lee
 Statistical Assistant

Contributing:

David Mattice – Hawaii County
 June Okamura – Honolulu County
 & Kauai County
 Naomi Landgraf – Maui County

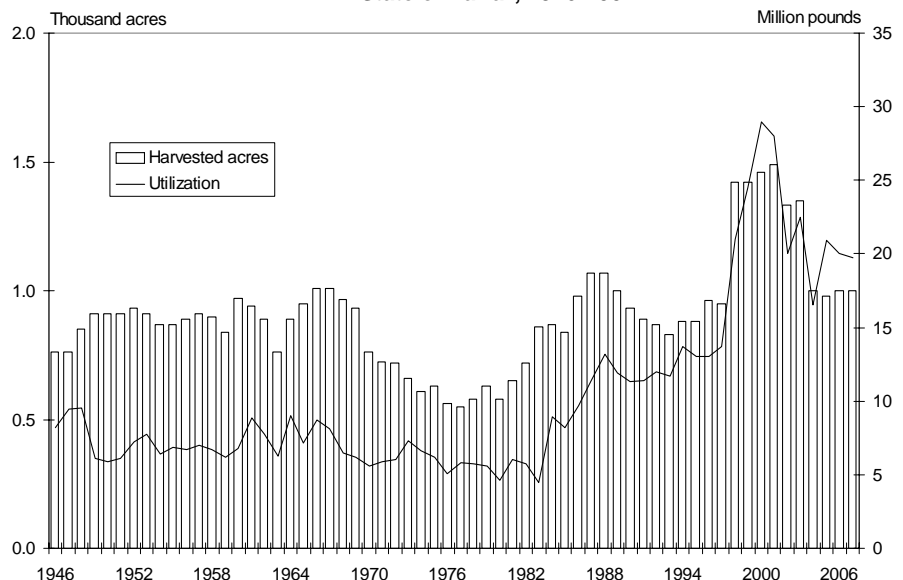
2007 BANANA UTILIZATION DOWN 2 PERCENT

Hawaii's 2007 banana utilization for fresh market totaled 19.7 million pounds, 2 percent less than 2006, according to USDA, NASS, Hawaii Field Office. Weather for 2007 was mixed for banana production with rainfall or irrigation supplying adequate moisture. Orchard maintenance and banana bunchy top virus monitoring was an ongoing procedure for growers.

Statewide total banana acreage was estimated at 1,200 acres, unchanged from 2006. Harvested acreage also remained unchanged at 1,000 acres.

Hawaii's banana producers received an average 41.0 cents per pound for fresh banana in 2007, 16 percent (8.0 cents) less than 2006. Value of sales totaled \$8.1 million, 18 percent lower than the \$9.8 million received in the previous year.

BANANAS: Acres Harvested and Utilization, State of Hawaii, 1946-2007



HAWAII BANANA STATISTICS

Table 1. BANANAS: State of Hawaii, 1949-2007

Year	Farms	Acreage		Yield per Acre (harvested)	Utilization Fresh	Farm price	Value of sales
		In crop	Harvested				
	<i>Number</i>	<i>-----Acres -----</i>		<i>-----1,000 pounds -----</i>		<i>Cents per pound</i>	<i>1,000 dollars</i>
1949	NA	1,010	910	6.7	6,115	7.6	464
1950	NA	1,020	910	6.5	5,870	7.2	424
1951	NA	990	910	6.7	6,085	7.4	451
1952	NA	1,010	930	7.8	7,250	6.7	489
1953	NA	980	910	8.5	7,760	6.5	503
1954	NA	930	870	7.4	6,430	6.8	436
1955	NA	950	870	7.9	6,850	6.5	444
1956	NA	1,000	890	7.6	6,725	6.8	454
1957	NA	1,050	910	7.7	6,985	5.7	398
1958	NA	1,050	900	7.4	6,665	6.8	435
1959	NA	1,010	840	7.4	6,210	7.1	438
1960	NA	1,130	970	7.8	6,810	6.4	435
1961	NA	1,160	940	9.4	8,835	6.7	592
1962	NA	1,110	890	8.7	7,710	6.6	509
1963	NA	1,040	760	8.2	6,245	7.8	484
1964	246	1,090	890	10.1	9,010	7.7	690
1965	243	1,160	950	7.5	7,160	7.7	545
1966	229	1,150	1,010	8.6	8,730	7.7	668
1967	216	1,155	1,010	8.0	8,095	7.0	567
1968	207	1,115	965	6.7	6,485	7.7	499
1969	170	1,038	933	6.6	6,170	9.4	580
1970	182	820	760	7.4	5,600	10.6	594
1971	172	810	725	8.1	5,865	11.6	680
1972	172	795	720	8.3	6,000	12.0	720
1973	171	730	660	11.1	7,295	10.6	773
1974	173	670	610	10.8	6,600	13.1	865
1975	154	690	630	9.8	6,200	13.8	856
1976	152	615	560	9.0	5,030	15.5	780
1977	153	610	550	10.5	5,800	15.6	905
1978	147	660	580	9.8	5,700	18.5	1,055
1979	148	690	630	8.8	5,550	20.5	1,138
1980	159	730	580	7.9	4,600	23.9	1,099
1981	152	760	650	9.2	6,000	25.7	1,542
1982	179	940	720	8.0	5,750	28.6	1,645
1983	183	1,100	860	5.2	4,470	31.2	1,395
1984	180	990	870	10.2	8,900	30.0	2,670
1985	178	1,060	840	9.7	8,160	30.3	2,472
1986	185	1,140	980	9.9	9,700	30.0	2,910
1987	175	1,220	1,070	10.7	11,400	29.7	3,386
1988	160	1,220	1,070	12.3	13,200	33.0	4,356
1989	150	1,150	1,000	11.9	11,900	36.5	4,344
1990	150	1,000	930	12.2	11,300	38.0	4,294
1991	145	970	890	12.8	11,400	41.0	4,674
1992	135	960	870	13.8	12,000	41.0	4,920
1993	130	980	830	14.1	11,700	38.0	4,446
1994	145	1,020	880	15.6	13,700	37.0	5,069
1995	170	1,120	880	14.8	13,000	40.0	5,200

Continued

HAWAII BANANA STATISTICS

Table 1. BANANAS: State of Hawaii, 1949-2007 -- Continued

Year	Farms	Acreage		Yield per acre (harvested)	Utilization Fresh	Farm price	Value of sales
		In crop	Harvested				
	<i>Number</i>	<i>Acres</i>		<i>1,000 pounds</i>		<i>Cents per pound</i>	<i>1,000 dollars</i>
1996	170	1,240	960	13.5	13,000	40.0	5,200
1997	170	1,590	950	14.4	13,700	38.0	5,206
1998	200	1,600	1,420	14.8	21,000	35.0	7,350
1999	210	1,760	1,420	17.3	24,500	35.0	8,575
2000	210	1,710	1,460	19.9	29,000	36.0	10,440
2001	200	1,660	1,490	18.8	28,000	38.0	10,640
2002	220	1,510	1,330	15.0	20,000	43.0	8,600
2003	230	1,560	1,350	16.7	22,500	41.0	9,225
2004	210	1,360	1,000	16.5	16,500	49.0	8,085
2005	190	1,145	980	21.3	20,900	43.9	9,175
2006	¹ 215	1,200	1,000	20.0	20,000	49.0	9,800
2007	225	1,200	1,000	19.7	19,700	41.0	8,077

¹ Revised.

INSHIPMENTS

Table 2. BANANAS: Fresh Cavendish banana inshipments into Honolulu, 2003-2007

Year	Jan.	Feb.	Mar.	Apr.	May	June	Jul.	Aug.	Sep.	Oct.	Nov.	Dec.	Honolulu	State
<i>1,000 pounds</i>														
2003	420	671	1,119	704	668	516	615	662	652	706	418	868	8,019	8,297
2004	961	786	1,391	999	1,153	1,149	1,093	1,116	895	1,569	1,106	1,221	13,439	13,929
2005													¹ 12,440	13,017
2006 ²														
2007 ²														

¹ Monthly breakdown not available. ² Data not available at time of printing.
Source: Hawaii Department of Agriculture, Market Analysis and News Branch.

U.S. FRESH BANANA IMPORTS

Table 3. BANANAS: U.S. fresh banana imports, quantity and value, 2003-2007

Year	Quantity	Custom value
	<i>Metric tons</i>	<i>1,000 dollars</i>
2003	3,879,151	1,038,150
2004	3,872,826	1,008,000
2005	3,824,409	1,036,837
2006 ¹	3,839,467	1,101,182
2007	4,003,800	1,126,737

The conversion for 1 metric ton = 2,204.6 pounds. Source: U.S. Department of Commerce. ¹ Revised.

Table 4. BANANAS: U.S. fresh banana imports, quantity and value, by country, 2007 ¹

Harmonized number: 0803002020

In 2007, the U.S. imported 4.0 million metric tons of fresh bananas from foreign sources, 4 percent more than the previous year. Guatemala, Costa Rica, and Ecuador, respectively, were the top three exporters of bananas to the U.S. The value posted was \$1.1 billion, 2 percent more than the revised 2006 value.

Country	Quantity	Custom value
	<i>Metric tons</i>	<i>1,000 dollars</i>
Colombia	377,232	117,647
Costa Rica	1,036,897	285,571
Dominica	8	10
Dominican Republic	1,720	977
Ecuador	929,175	258,693
Guatemala	1,093,391	296,836
Honduras	482,732	136,733
Mexico	31,508	13,758
Nicaragua	32,788	8,138
Panama	502	156
Peru	17,848	8,217
Total	4,003,800	1,126,737

The conversion for 1 metric ton = 2,204.6 pounds.

¹ Data may not add due to rounding.

Source: U.S. Department of Commerce.