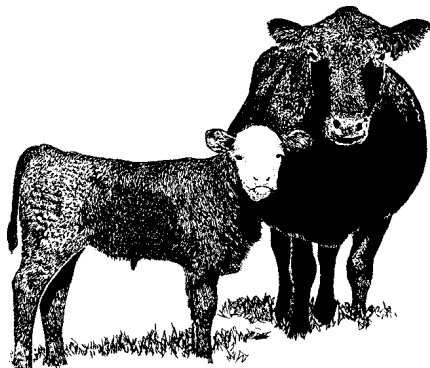


HAWAII CATTLE

January 1



Hawaii Department of Agriculture
Agricultural Development Division

U.S. Department of Agriculture

P.O. Box 22159
Honolulu, Hi 96823-2159

Phone (808) 973-9588
FAX (808) 973-2909

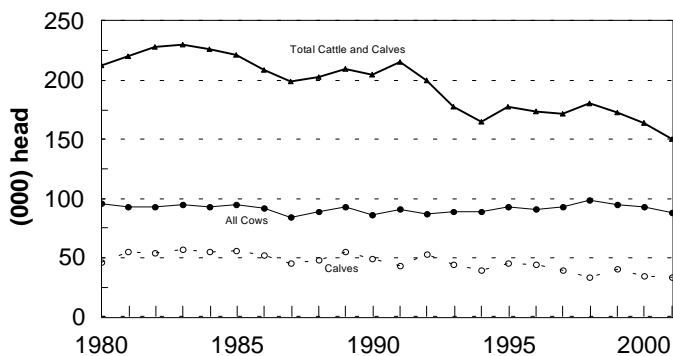
Release: March 1, 2001

Frequency: Annual

INVENTORY DECLINES 9 PERCENT FROM YEAR AGO

According to the *Hawaii Agricultural Statistics Service*, the total number of cattle and calves on Hawaii's ranches on January 1, 2001 was **150,000** head, 14,000 and 23,000 below a year earlier and two years ago, respectively. The continuation of the prolonged dry spell and drought-like conditions in several major grazing areas of the State kept available forage feed supplies low in 2000. Many cattlemen were forced to reduce the size of their herds and as a result had fewer head on hand at the end of the year.

JANUARY 1 CATTLE INVENTORY
State of Hawaii, 1980-2001



HASS (3/01)

Highlights

- Beef cows - 81,000 head - down 3,000
- Milk cows - 7,000 head - down 2,000
- Heifers 500 pounds and over
 - S Beef replacements - 10,000 head - down 4,000
 - S Milk replacements - 3,000 head - down 1,000
 - S Other heifers - 5,000 head - down 1,000
- Steers - 6,000 head - down 2,000
- Bulls - 4,000 head - unchanged
- Calves - 34,000 head - down 1,000

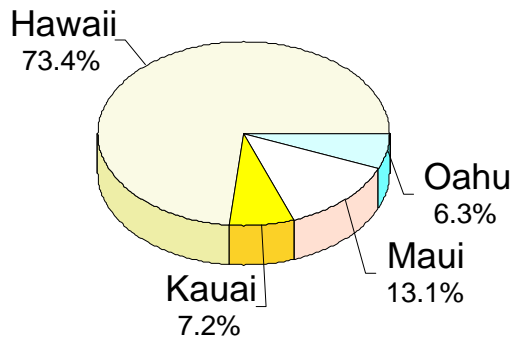
Inventory By County

The island of Hawaii, with over 70 percent of the State's inventory, recorded a 4,300 head decline from a year earlier to 110,100 head on January 1, 2001. Maui County (Maui/Molokai/Lanai) with a 6,600 head decline, had the largest drop in inventory to 19,700 head. Honolulu county registered a 3,400 head drop in inventory from a year ago to 9,400 head. Kauai County showed the only increase in inventory, 300 more head to total 10,800 head.

Total Marketings Slightly Lower

Cattle and calf marketings totaled 73,000 head during 2000, a decrease of 1,000 head from the previous year. The bulk of marketings continued

CATTLE INVENTORY BY ISLANDS
January 1, 2001



HASS (3/01)

to be exports of cattle and calves to the mainland west coast. Out-of-State shipments totaled

51,000 head during 2000, a decline of 6,000 from the previous year.

Below-normal rainfall continued throughout most of 2000 leaving pastures dry and short of forage. Cattle prices rebounded as exports led the way.

Calf Crop Lower

The 2000 calf crop for Hawaii is estimated at 69,000 head, 4,000 below both a year ago and two years ago.

CATTLE AND CALVES: January 1 inventory by sex classes and weight, by island, 1997-2001

Year	All cattle and calves	All cows and heifers that have calved			Heifers 500 pounds and over				Steers 500 lbs. and over	Bulls 500 lbs. and over	Steers, heifers, and bulls under 500 lbs.
		Total	Beef cows	Milk cows	Total	Beef cow replacements	Milk cow replacements	Other			
STATE ¹											
1997	172	93	83	10	27	16	5	6	8	5	39
1998	180	97	88	9	28	16	4	8	10	5	40
1999	173	95	86	9	25	16	4	5	8	5	40
2000	164	93	84	9	24	14	4	6	8	4	35
2001	150	88	81	7	18	10	3	5	6	4	34
Hawaii											
1997	119.1	63.8	62.0	1.8	17.8	12.5	1.4	3.9	4.7	3.9	28.9
1998	124.9	67.6	65.4	2.2	18.2	11.6	.8	5.8	6.0	3.5	29.6
1999	119.8	65.8	63.9	1.9	16.1	11.8	1.1	3.2	5.1	3.5	29.3
2000	114.4	65.4	63.4	2.0	16.5	10.9	1.4	4.2	5.2	3.0	24.3
2001	110.1	66.6	64.0	2.6	12.5	7.3	1.9	3.3	3.6	3.4	24.0
Honolulu											
1997	13.1	7.7	1.4	6.3	2.7	.3	2.3	.1	.2	.2	2.3
1998	13.0	7.0	2.0	5.0	3.4	.9	2.3	.2	.3	.2	2.1
1999	13.4	7.2	2.0	5.2	3.2	.8	2.1	.3	.3	.2	2.5
2000	12.8	7.7	2.1	5.6	2.2	.4	1.6	.2	.2	.2	2.5
2001	9.4	5.5	.8	4.7	1.7	.2	1.3	.2	.1	.1	2.0
Kauai											
1997	11.3	4.8	4.2	.6	2.5	.9	.7	.9	1.1	.3	2.6
1998	11.4	5.0	4.4	.6	2.2	.9	.4	.9	1.5	.4	2.3
1999	10.6	4.9	4.2	.7	1.8	.8	.3	.7	1.1	.3	2.5
2000	10.5	4.9	4.1	.8	1.8	.7	.2	.9	1.1	.3	2.4
2001	10.8	5.0	5.0	*	1.7	.9	0	.8	1.1	.3	2.7
Maui											
1997	28.5	16.7	15.8	.9	3.9	2.2	.5	1.2	1.8	.7	5.4
1998	30.7	17.6	16.6	1.0	4.1	2.4	.6	1.1	1.8	.8	6.4
1999	29.2	17.0	16.1	.9	4.2	2.4	.6	1.2	1.6	.7	5.7
2000	26.3	14.9	14.8	.1	3.5	2.1	.4	1.0	1.3	.5	6.1
2001	19.7	11.1	11.1	*	2.1	1.3	.2	.6	1.1	.5	4.9

* = Less than 50. ¹ State totals may not add due to rounding.

CATTLE AND CALVES: Inventory and disposition, State of Hawaii. 1996-2000

Year	Inventory beginning January 1	Calf crop	Inshipments	Marketings	Farm slaughter	Deaths	Inventory January 1 following year
				1,000 head			
1996	174	74	*	62	1	13	172
1997	172	77	*	58	1	10	180
1998	180	73	*	67	1	12	173
1999	173	73 ¹	*	74	1 ¹	7	164
2000	164	69	*	73	1	9	150

* = Less than 500. ¹ Revised

CATTLE AND CALVES: Exports, 1996-2000

Year	Total Export	Cattle ¹	Calves ²	Steers	Heifers
		1,000 head			
1996	38	4	34	37	11
1997	39	5	34	25	14
1998	44	4	40	25	19
1999	57	4	53	33	24
2000	51	5	46	30	21

¹ Over 500 pounds. ² Under 500 pounds.

U.S. INVENTORY SECTION

U.S. INVENTORY DOWN 1 PERCENT

All cattle and calves in the United States as of January 1, 2001, totaled 97.3 million head, 1 percent below the 98.2 million on January 1, 2000 and 2 percent below the 99.1 million two years ago.

All cows and heifers that have calved, at 42.6 million, were slightly below the 42.8 million on January 1, 2000 and 1 percent below the 42.9 million two years ago.

Cattle and Calves: Number by Class and Calf Crop, United States, January 1, 1999-2001

Class	1999	2000	2001	2000 as % of 2001
		1,000 head		percent
Cattle and Calves	99,115	98,198	97,309	99
Cows and Heifers That Have Calved	42,878	42,759	42,603	100
Beef Cows	33,745	33,569	33,400	99
Milk Cows	9,133	9,190	9,203	100
Heifers 500 Pounds and Over	19,774	19,649	19,775	101
For Beef Cow Replacement	5,535	5,503	5,588	102
For Milk Cow Replacement	4,069	4,000	4,047	101
Other Heifers	10,170	10,147	10,140	100
Steers 500 Pounds and Over	16,891	16,682	16,438	99
Bulls 500 Pounds and Over	2,281	2,293	2,272	99
Calves Under 500 Pounds	17,290	16,815	16,221	96
	1998	1999	2000	2000 as % of 1999
Calf Crop	38,812	38,796	38,621	100

SOURCE: *Cattle*, January 26, 2001, National Agricultural Statistics Service (NASS), Agricultural Statistics Board, U.S. Department of Agriculture.

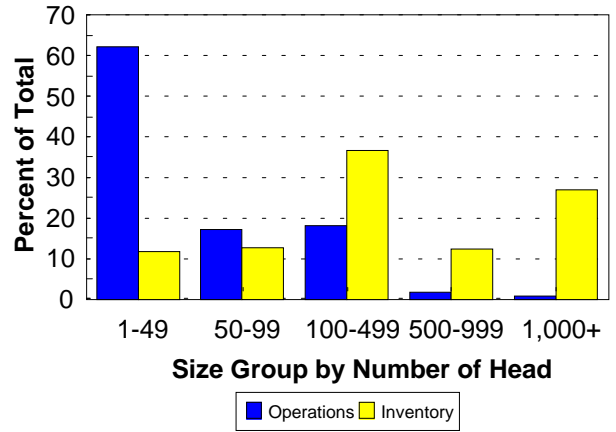
U.S. CALF CROP DOWN SLIGHTLY

The 2000 calf crop was estimated at 38.6 million head, down slightly from both 1999 and 1998. Calves born during the first half of the year are estimated at 28.4 million, down slightly from both 1999 and 1998.

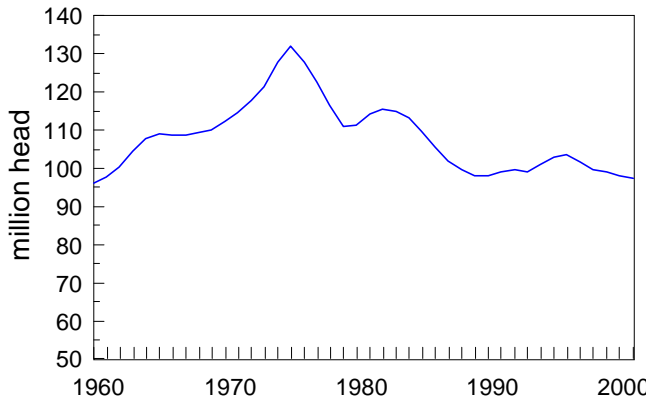
U.S. CATTLE OPERATIONS DOWN 2 PERCENT

The number of operations with cattle totaled 1.08 million during 2000, down 2 percent from 1999 and 4 percent below 1998. Beef cow operations in 2000 were down 2 percent from 1999 and 3 percent below 1998.

U.S. Size Group Comparison
Cattle Operations vs Cattle Inventory by Percent

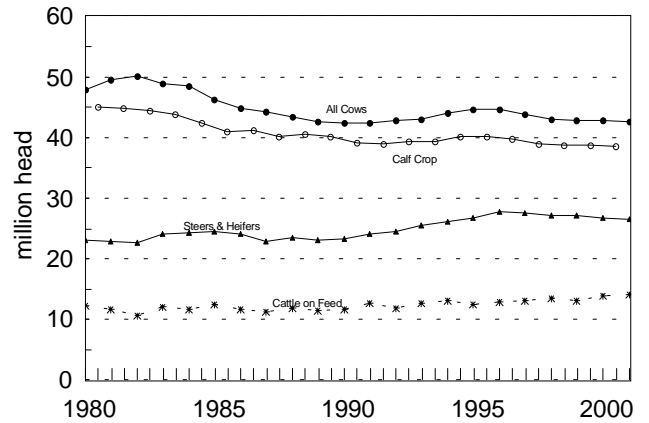


January 1, U.S. Cattle Inventory



HASS (3/01)

U.S. Cattle
Comparison by category, 1980 - 2001



DONALD A. MARTIN
State Agricultural Statistician

NILS K. MORITA
Research Statistician