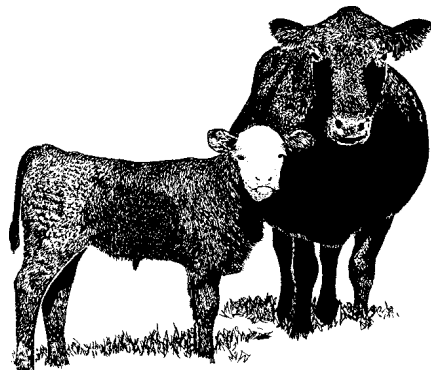


HAWAII CATTLE

January 1



HAWAII
AGRICULTURAL
STATISTICS
SERVICE



Hawaii Department of Agriculture
Agricultural Development Division

U.S. Department of Agriculture

P.O. Box 22159
Honolulu, Hi 96823-2159

Phone (808) 973-9588
FAX (808) 973-2909

Frequency: Annual

Release: February 20, 2002

INVENTORY 1 PERCENT ABOVE A YEAR AGO

According to the *Hawaii Agricultural Statistics Service*, the total number of cattle and calves on Hawaii's ranches on January 1, 2002 was **152,000** head, 2,000 above January 1, 2001, and the first year-to-year increase since 1998. The prolonged dry spell continued through much of 2001, keeping forage feed supplies low. This in turn forced many ranchers to maintain smaller size herds, which is best reflected in the continued decline in beef cows on hand. Fall rains (2001) benefitted pastures in many of the drier areas and raised optimism that after nearly 4 years of low rainfall, forage conditions would begin to improve. By year's end, that was beginning to be evident in many areas.

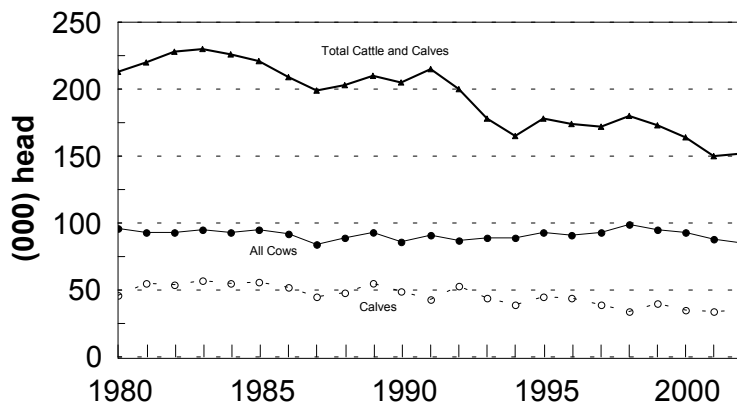
Highlights

- * Beef cows - 78,000 head - down 3,000
- * Milk cows - 7,000 head - unchanged
- * Heifers 500 pounds and over
 - Beef replacements - 10,000 head - unchanged
 - Milk replacements - 3,000 head - unchanged
 - Other heifers - 7,000 head - up 2,000
- * Steers - 8,000 head - up 2,000
- * Bulls - 4,000 head - unchanged
- * Calves - 35,000 head - up 1,000

Total Marketings Slightly Lower

Cattle and calf marketings totaled 59,000 head during 2001, a decrease of 14,000 head from the previous year. The bulk of marketings continued to be exports of cattle and calves to the mainland west coast. Out-of-State shipments totaled 46,000 head during 2001, a decline of 5,000 from the previous year.

JANUARY 1 CATTLE INVENTORY
State of Hawaii, 1980-2002



HASS (2/02)

Calf Crop Lower

The 2001 calf crop for Hawaii is estimated at 66,000 head, 3,000 fewer than a year ago, and 7,000 fewer than two years ago.

**CATTLE AND CALVES: January 1 inventory by sex classes and weight,
State of Hawaii, 1998-2002**

Year	All cattle and calves	All cows and heifers that have calved			Heifers 500 pounds and over				Steers 500 lbs. and over	Bulls 500 lbs. and over	Steers, heifers, and bulls under 500 lbs.
		Total	Beef cows	Milk cows	Total	Beef cow replacements	Milk cow replacements	Other			
1998	180	97	88	9	28	16	4	8	10	5	40
1999	173	95	86	9	25	16	4	5	8	5	40
2000	164	93	84	9	24	14	4	6	8	4	35
2001	150	88	81	7	18	10	3	5	6	4	34
2002	152	85	78	7	20	10	3	7	8	4	35

* = Less than 50. ¹ State totals may not add due to rounding.

CATTLE AND CALVES: Inventory and disposition, State of Hawaii. 1997-2001

Year	Inventory beginning January 1	Calf crop	Inshipments	Marketings	Farm slaughter	Deaths	Inventory January 1 following year
1,000 head							
1997	172	77	*	58	1	10	180
1998	180	73	*	67	1	12	173
1999	173	73	*	74	1	7	164
2000	164	69	*	73	1	9	150
2001	150	66	*	59	*	5	152

* = Less than 500.

CATTLE AND CALVES: Exports, 1997-2001

Year	Total Export	Cattle ¹	Calves ²	Steers	Heifers
1,000 head					
1997	39	5	34	25	14
1998	44	4	40	25	19
1999	57	4	53	33	24
2000	51	5	46	30	21
2001	46	4	42	26	20

¹ Over 500 pounds. ² Under 500 pounds.

U.S. INVENTORY SECTION

U.S. INVENTORY DOWN 1 PERCENT

All cattle and calves in the United States as of January 1, 2002, totaled 96.7 million head, 1 percent below the 97.3 million on January 1, 2001 and 2 percent below the 98.2 million two years ago.

All cows and heifers that have calved, at 42.2 million, were 1 percent below both the 42.6 million on January 1, 2001 and the 42.8 million two years ago.

- * Beef cows – 33.1 million head, down 1 percent
- * Milk cows – 9.11 million head, down 1 percent
- * All Heifers weighing 500 pounds and over
 - Beef cow replacement heifers – 5.56 million head, down slightly
 - Milk cow replacement heifers – 4.06 million head, down slightly
 - Other heifers – 10.1 million head, down 1 percent
- * Steers weighing 500 pounds and over – 16.8 million head, up 2 percent
- * Bulls weighing 500 pounds and over – 2.24 million head, down 1 percent
- * Calves weighing under 500 pounds – 15.8 million head, down 3 percent
- * Cattle and calves on feed for slaughter in all feedlots – 13.9 million head, down 2 percent

U.S. CALF CROP DOWN SLIGHTLY

The 2001 calf crop was estimated at 38.3 million head, down 1 percent from both 2000 and 1999. Calves born during the first half of the year are estimated at 28.1 million, down 1 percent from both 2000 and 1999.

**Cattle and Calves: Number by Class and Calf Crop, United States,
January 1, 2000-2002**

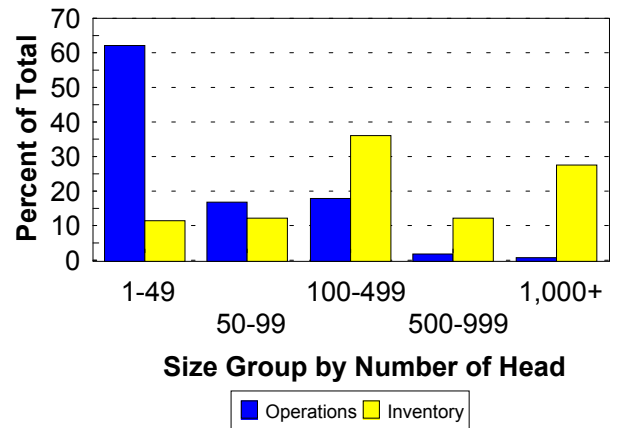
Class	2000	2001	2002	2002 as % of 2001
		1,000 head		percent
Cattle and Calves	98,198	97,277	96,704	99
Cows and Heifers That Have Calved	42,759	42,580	42,209	99
Beef Cows	33,569	33,397	33,100	99
Milk Cows	9,190	9,183	9,110	99
Heifers 500 Pounds and Over	19,649	19,776	19,678	100
For Beef Cow Replacement	5,503	5,588	5,561	100
For Milk Cow Replacement	4,000	4,057	4,060	100
Other Heifers	10,147	10,131	10,057	99
Steers 500 Pounds and Over	16,682	16,441	16,800	102
Bulls 500 Pounds and Over	2,293	2,274	2,244	99
Calves Under 500 Pounds	16,815	16,206	15,773	97
Cattle on Feed	14,003	14,201	13,860	98
	1999	2000	2001	2001 as % of 2000
Calf Crop	38,796	38,631	38,280	99

SOURCE: *Cattle*, February 1, 2002, National Agricultural Statistics Service (NASS), Agricultural Statistics Board, U.S. Department of Agriculture.

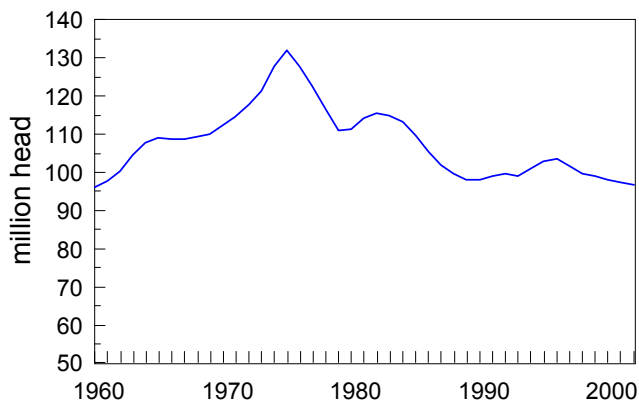
U.S. CATTLE OPERATIONS DOWN 2 PERCENT

The number of operations with cattle totaled 1.05 million during 2001, down 2 percent from 2000 and 4 percent below 1999. Beef cow operations in 2001 were down 2 percent from 2000 and 4 percent below 1999. Milk cow operations were 7 percent below last year and 12 percent below two years ago.

U.S. Size Group Comparison Cattle Operations vs Cattle Inventory by Percent



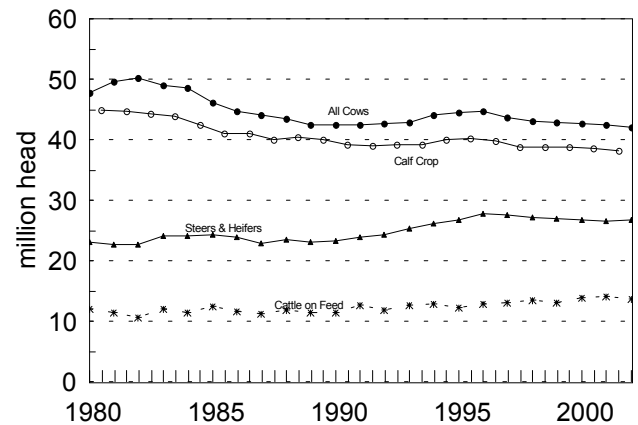
January 1, U.S. Cattle Inventory



HASS (2/02)

U.S. Cattle

Comparison by category, 1980 - 2002



DONALD A. MARTIN
State Agricultural Statistician

NILS K. MORITA
Research Statistician